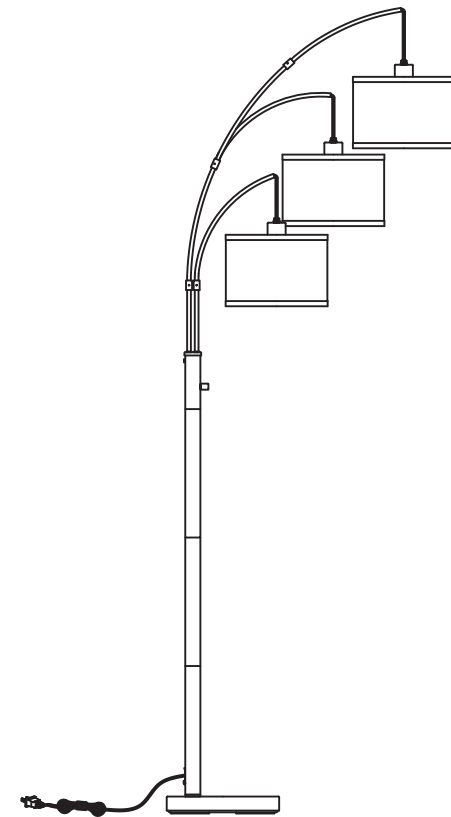


尺寸：A5（展开尺寸：296*210mm 对折尺寸：148*210mm）

材质：105g铜版纸+正反面1C+骑马钉

封面封底背面留白



User Manual

Arc Floor Lamp

Introduction

Thank you for purchasing our 3 Lights Arc Floor Lamp. Please read the following instructions carefully before use.

Product Features

- 1. Classic fishing style, embellish the space atmosphere of the room.
- 2.Arched floor lamp with solid color finish mixed with a fabric shade combines the best of minimalist design with a modern color palette to bring you a modern minimalist lamp perfect for any space in your home.
- 3.With the lampshade made of linen fabric, it is more ornamental during the day and has highlight transmittance at night.
- 4.This arched floor lamp is equipped with a rotary switch, which is more convenient to switch in the dark compared to the traditional foot switch.
- 5. Bulb is **NOT** included

Parameter

Lamp	
Power For Blub	MAX 60W
Material	Iron+ Fabric
Socket Type	E26
Switch	Rotary Switch
Size For Shade	D10x7 inches
Size For Lamp	28.2 x11x78 inches

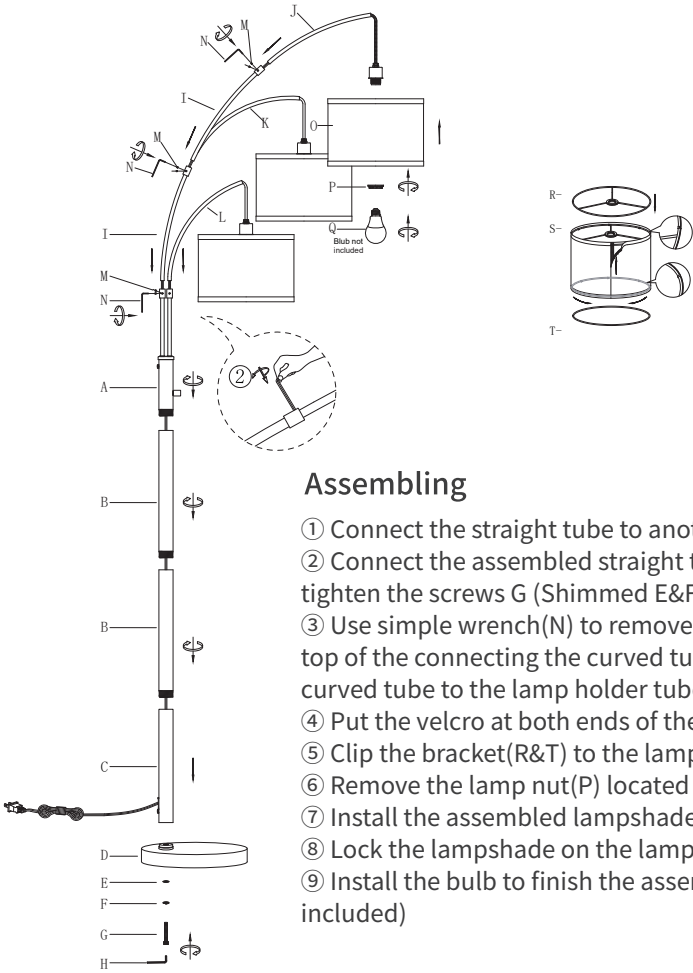
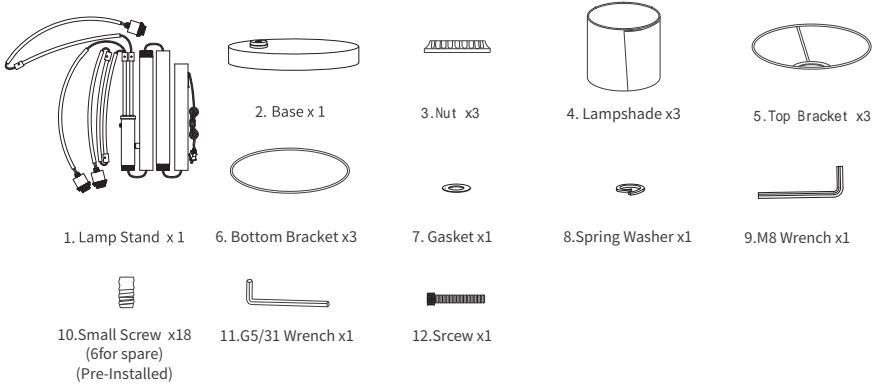
Cautions

- 1.Please make sure that the voltage is 100-120V, which is standard for US. This product can only be used between 100-120V.
- 2. Unplug before cleaning.
- 3. Since our lamp base uses E26 base, it can be compatible with many types of bulbs! For example, A19/ST64/ST58 and so on.(Bulb is NOT included)

Warranty and Our mission

Light the world, warm your heart, which is the goal that we have been pursu-ing. We'd like to provide you with the best lamps and services. We provide a 24-month warranty for you. If you have any questions or suggestions, please contact us soon, we will do our best to solve the problem and improve ourselves. Wish you enjoy the lamp and our service.

Package List



Assembling

- ① Connect the straight tube to another straight tube(A->B->C).
- ② Connect the assembled straight tube to the base(D) and tighten the screws G (Shimmed E&F)with the large wrench H.
- ③ Use simple wrench(N) to remove the two screws(M) on the top of the connecting the curved tube(I), and connect the curved tube to the lamp holder tube.(Align the arcs.)
- ④ Put the velcro at both ends of the lampshade(S) together.
- ⑤ Clip the bracket(R&T) to the lampshade.
- ⑥ Remove the lamp nut(P) located on the lamp holder.
- ⑦ Install the assembled lampshade to the lamp holder.
- ⑧ Lock the lampshade on the lamp holder with the lamp nut.
- ⑨ Install the bulb to finish the assembling.(Bulb is NOT included)