

ANNWA

USER MANUAL

Handheld Shower Head

Turn Your Shower to Spa-like Experience.

Explore your preferred water spray patterns from a gentle mist to a revitalizing massage, making your shower an enjoyable routine.

Important Safety Instructions

Read all instructions before using this appliance.

1. Keep the appliance and its accessories out of reach of children while installing.
2. Ensure all parts of the product are installed securely.
3. Install the appliance according to the instructions.
4. Ensure that the water supply is turned off before installation or maintenance.
5. Check for any leaks or drips after installation and tighten connections if necessary.
6. Avoid using harsh chemicals or abrasive cleaners on showerheads as they may damage the finish.

Package include

Handheld Shower Head (Built-in filter cartridge) x 1

Shower Head Bracket x 1

Shower Hose x 1

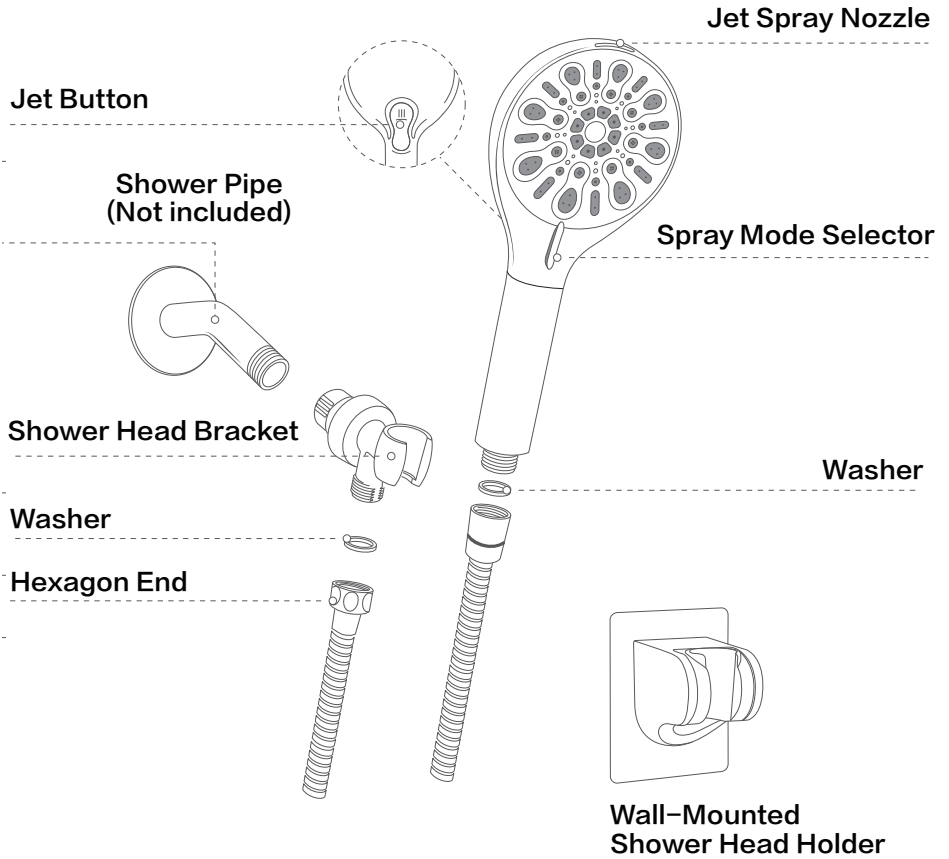
Water Flow Restrictor x 1

Teflon Tape x 1

Rubber Washer x 2

Wall-mounted Handheld Shower Holder x 1

Overview



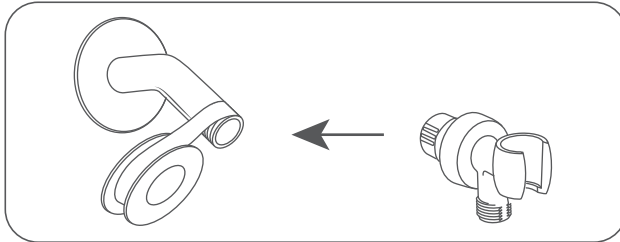
Installation

Prior To Installation

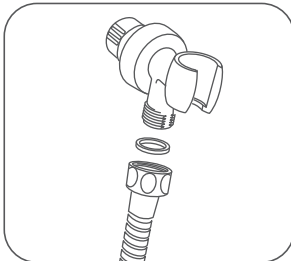
- Remove the old shower head and all pipe tape.
- Ensure that the washer from the old shower is disconnected to the shower pipe. Use a thin utensil to check inside the shower pipe for washers, such as a pencil or screw driver. Do not use your fingers.

Installing Shower Head

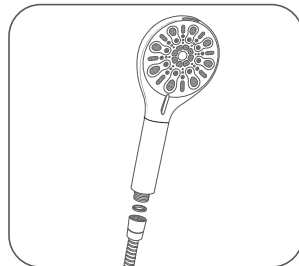
Tape the threads of the shower pipe, then screw the shower head bracket to the shower pipe.



b. Connect the hexagon end of the hose to the bracket.



c. Connect the other end of the hose to the shower head.



Tips: Make sure rubber washers are put inside both ends of the hose before connection.



CORRECT

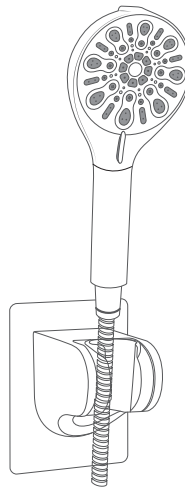
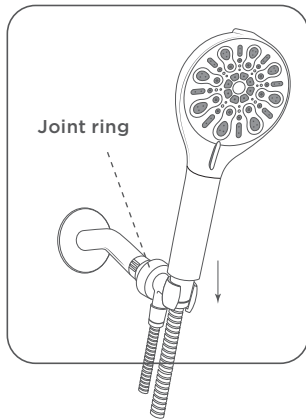


WRONG



WRONG

d. Place the shower head in the bracket. Loosen the joint ring, adjust the bracket's direction, then tighten the joint ring back when the bracket is adjusted to the desired position.

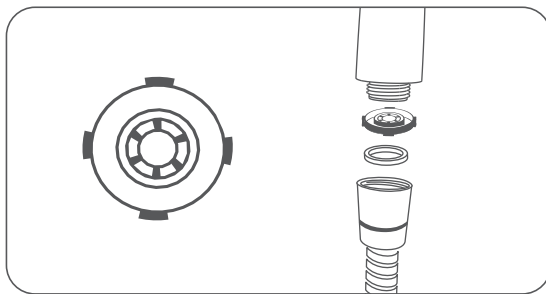


e. Install the shower head wall – mounted holder 50 – 60 inches above the ground (adjustable). Clean and dry the wall first. Tear off the sticker, press the holder firmly against the wall. Insert the shower head after 24 hours for better security.

f. Turn on the water to check all connections for any leaks. If a leak is detected, turn off the water and tighten the loose connection. When there is no leak, turn on the water to enjoy your shower.

Installing Water Flow Restrictor

Put the water flow restrictor into the shower head and then connect one end of the hose to the shower head. Make sure the restrictor and washer are put in place respectively.

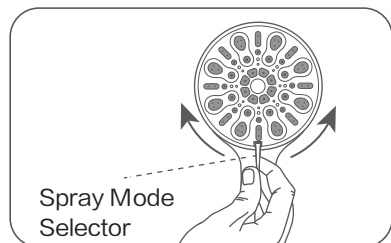


Note: The water flow restrictor is designed to limit the flow rate of the shower head to reduce total water consumption.

Operation

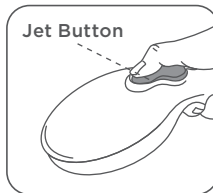
1. Spray Mode Selector

Rotate the spray mode selector on the shower head to choose your preferred mode from various water spray modes.



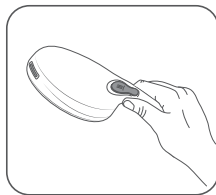
2. Jet Button

Press the jet button on the back of the shower head to achieve a high-pressure power wash. Use jet spray mode instantly tackles stubborn stains in dead spots and easily remove foam and soap scum from walls and floors.

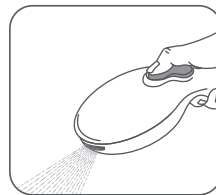


Note

The jet spray mode will be easily activated when the jet spray nozzle is below the horizontal position. A safety mechanism inside keeps the mode from being activated when it is above horizontal position.

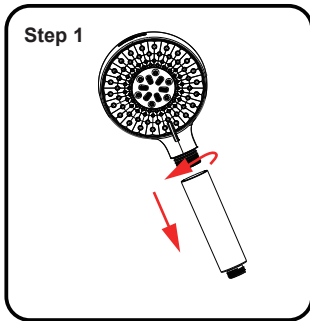


Will not activate in
this position

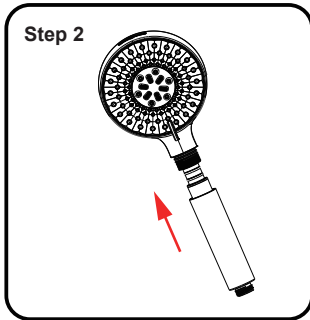


Will activate in
this position

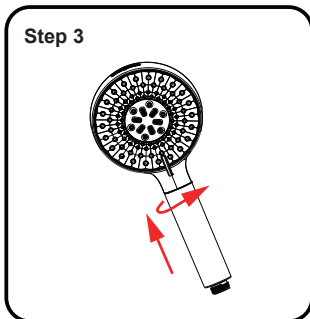
Cartridge Replacement Instructions



Step1: Unscrew counterclockwise to remove the old filter cartridge



Step2: Install the cartridge



Step3: Screw clockwise to reassemble the showerfilter

Filter Cartridge Replacement Recommendation

It's advised to replace the filter cartridge every 4–6 months, depending on your local water quality. Please visit our store when you need to replace it.

Maintenance

- a. When mineral deposits appear on the spray nozzles, please gently rub the rubber nozzles on the surface of the shower head by using a cloth or a sponge.
- b. Do not clean or rinse any part of the shower head with harsh chemicals, heavy duty cleaners, or abrasives that may damage the shower head.

Warranty (1–Year Period)

Thank you for choosing ANNWA's products. In order to protect your rights and interests, please fully understand the following warranty terms.

1. Service Description

1.1 Warranty service is valid within the warranty period and requires the presentation of purchase records.;

1.2 ANNWA only assumes warranty liability for the original parts when they just leave the factory. ANNWA will not be responsible for any parts installed or modified by users or dealers without permission and any faults arising therefrom;

1.3 The dealer has provided additional services beyond ANNWA's warranty commitment. Please confirm the commitment with the dealer in order to have an access to its additional services,

1.4 Warranty service is only for personal use, the warranty of commercial products are invalid; and engineering products are guaranteed according to the warranty period signed in the engineering contract.

2. Under the following conditions, customers will not be entitled to the free warranty.

2.1 Beyond the warranty period ;

2.2 Failure caused by improper installation, usage and maintenance according to the product manual or use in a service environment that does not comply with the provisions of the product manual;

2.3. Product failure or components damage caused by the use of detergent with coarse particles such as decontamination powder or polishing powder, nylon brush, abrasive cloth or sandpaper.

2.4. Product failure or components damage caused by force majeure such as natural disasters(including earthquake, fire hazard, etc.) and other accidents (collision, smashing, stepping, etc.).

Customer Service

When there is a problem with your ANNWA product, You can contact ANNWA after-sales department with email.

address: annwahelp@annwa.com.cn.

We will provide you with satisfactory service as soon as possible.