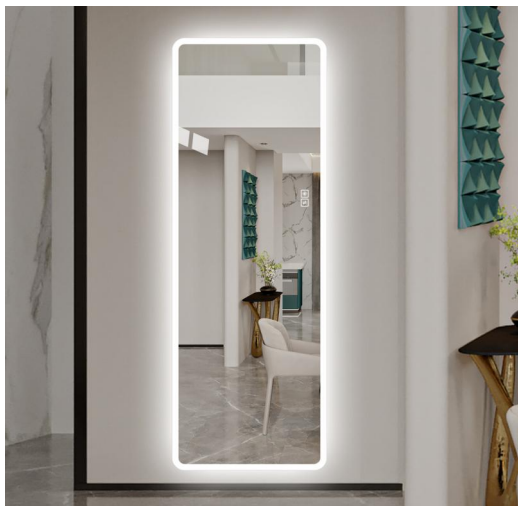


Mirror introduction



Function Indicator



Short press the switch : on/off
Long press the switch : Infinitely adjust the brightness



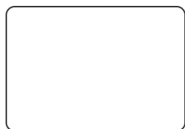
Short press the switch :switch the light color

Installation Instruction

Before Installation

- * Please make sure that the installed wall is a load bearing wall.
- * Please attention to avoid wires or water pipes when drilling.

Product and accessories



Mirror*1



Expansionscrew*2



Screw*2

Tools Needs (not included in the package)



Pencil



Electric Drill



Hammer



Tapeline

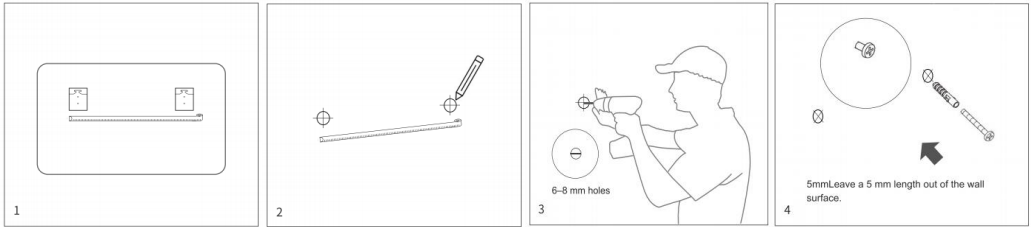


Level Ruler



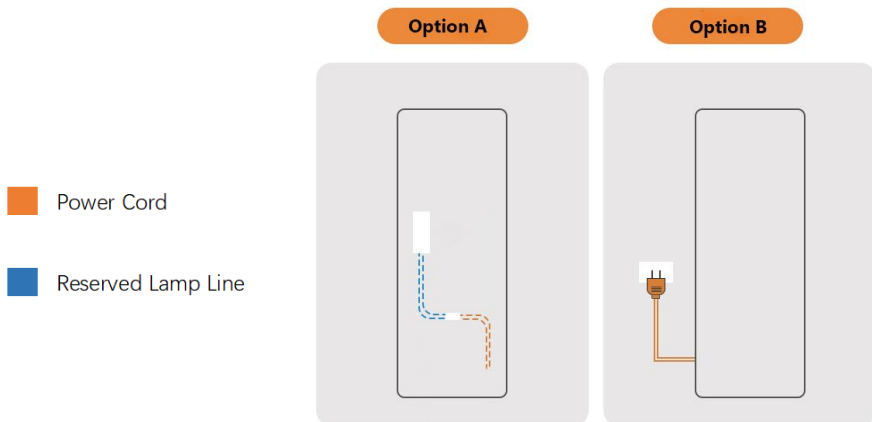
Screwdriver

Mirror introduction



1. Measure the hanger spacing Measure the distance between 2hangers with a tape measure
2. Mark drilling locations Determine the specific locations ofdrilling with a tape measure, andmark it out with a pencil.
3. Drill holes with a percussion drill Drill 6-8 mm holes in the wall atmarked locations with a percussiondrill.
4. Put an expansion tube into eachhole and put a screw into each tube Strike expansion tubes into drill holes with hammer and put screws into expansiontubes with a screwdriver. Leave a 5 mmlength out of the wall surface

Wiring Instructions



Cut out the plug and the reserved wire connection port, which can be hidden on the back of the mirror

The mirror plug is directly plugged into the wall socket for use (the socket cannot be on the back of the mirror)