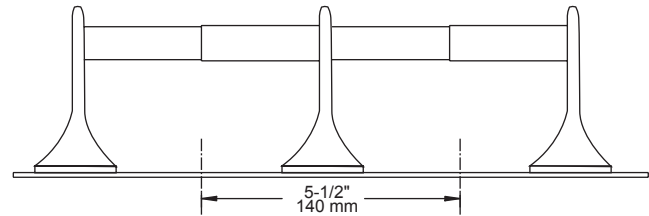
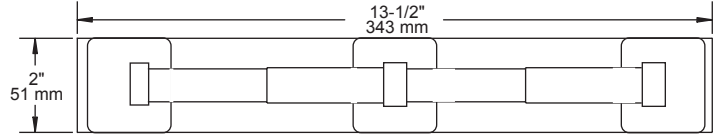
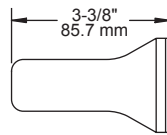
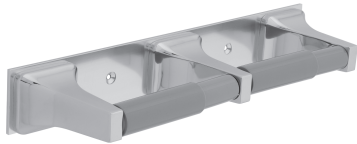


Recessed Fixtures

TWIN PAPER HOLDER - 980 SERIES



MATERIALS:

Paper holder posts are die cast from highest quality virgin zinc alloy (Zamak) to meet ASTM standard B-86. Die casts are highly polished and chrome plated. Wall plates are 19 gauge zinc plated steel and are installed on 1/8" thick polished aluminum plate with rivets. Roller material as listed under each model number. All rollers are spring actuated.

INSTALLATION:

Mount pre-assembled double roll paper holder with 2 - #9 x 3/4" flat head zinc plated steel screws provided.

OPTIONAL FASTENER INFORMATION:

Wood blocking is preferable behind all wall surfaces. If wood blocking is not available, the following fasteners are suggested: Tile/Masonry - Plastic or Lead Anchors, Plaster/Drywall - Toggle Bolts.

SPECIFICATION:

Surface mounted twin paper holder shall be model _____
(fill in model number) by Liberty Hardware Manufacturing Corporation.

FranklinBrass®
A Liberty Hardware Brand

Liberty Hardware Manufacturing Corporation • 140 Business Park Drive • Winston-Salem, NC 27107 • 800.542.3789 • www.libertyhardware.com

©2009 LHMC, A Masco Company