

## Laptop mount



**SA-D28+D15**

### Product Information



Thank you for choosing our product. ShoppingAll is dedicated to providing the highest level of quality and service to our customers. If you are satisfied with the item, would you kindly share your feedback on Amazon? Please do not hesitate to contact us if you have any issue.  
Call: +1 (855) 266-9166  
Mon-Fri 8:00am – 9:00pm (Eastern Time) (Canada/USA)  
Email: [Support@ShoppingAll.com](mailto:Support@ShoppingAll.com)  
Website: [www.ShoppingAll.com](http://www.ShoppingAll.com)




8kg(17.6lbs) max.





11" - 17"(28-43cm) .


## WARNING STATEMENTS


### Warning


 Prior to the installation of this product, the installation instruction must be read and completely understood. Failure to do so may result in personal injury, property damage or voiding of manufacturer warranty.

 Do not install on a structure that is prone to vibration, or movement. Reinforce the structure as required before installation.









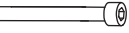



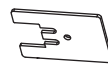

 Recommended mounting surfaces: Wooden studs or solid-flat concrete. If the mount is to be installed on any surface other than wooden studs, use suitable hardware.

 Pay attention to the weight capacity of the mount. Exceeding the limitation can result in impairment or serious injury and property damage.

 Never operate the mount if parts are missing or damaged. Contact your local service center for warranty service.

 Do not use this product for any purpose or in any configuration not explicitly specified in this instruction. We hereby disclaim any and all liability for injury or damage arising from incorrect assembly, Incorrect mounting, or incorrect use of this product.

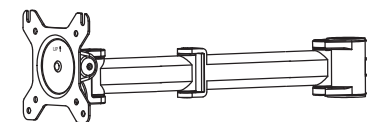
## PARTS INCLUDED

A	 M4x8 (x4)	 M4x12 (x4)	 M4x30 (x4)
B	 12X5.8X16 (x4)	 S=5mm (x1)	 S=4mm (x1)
C	 (x1)	 (x2)	
D	 M6x70(x2)	 M6x15(x3)	
E	 M5x12(x4)	 M5(x4)	
F	 (x2)		
G	 (x1)		

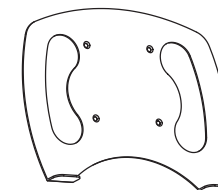
H



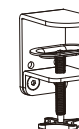
I



J

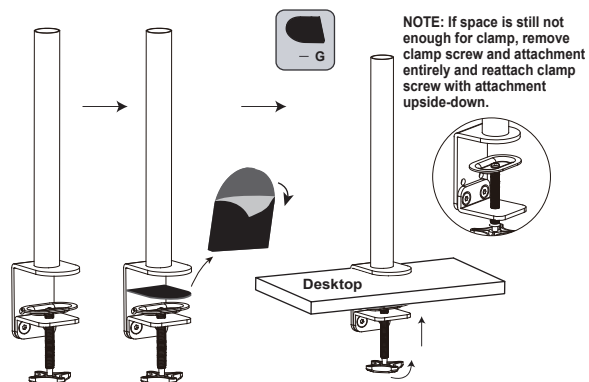
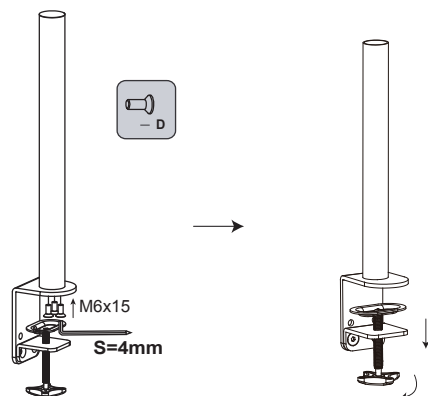


K

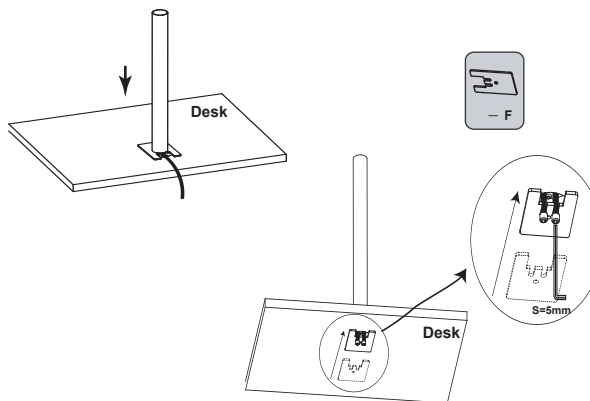
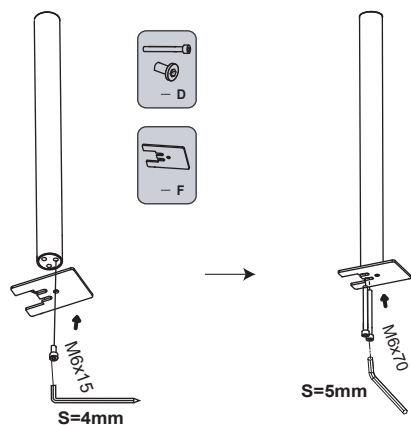


# ► INSTALLATION

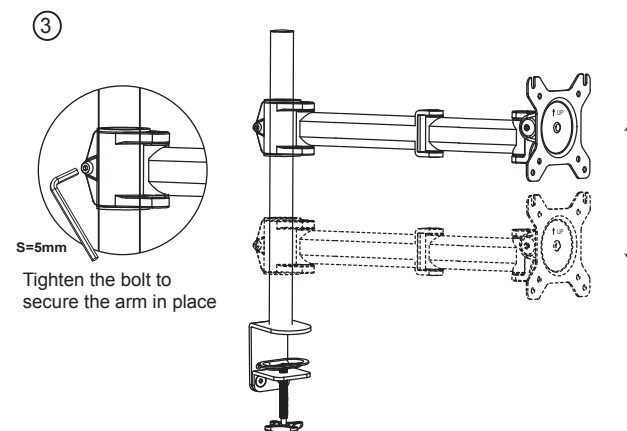
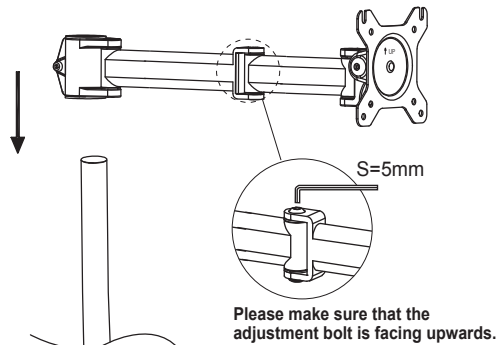
## ① Clamp Installation



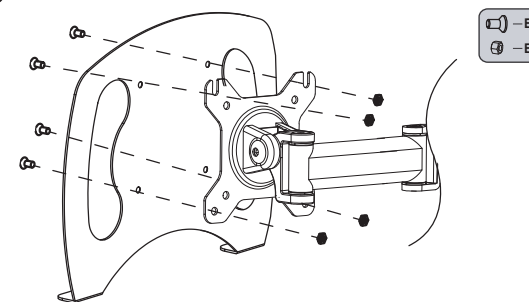
## OR 1 Grommet Installation



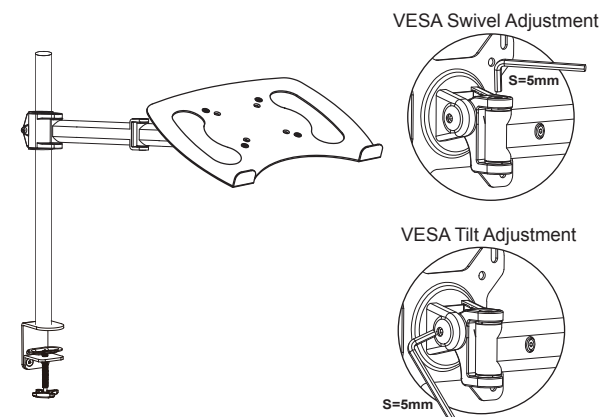
## ② Arm Installation



## ④ Laptop Tray Installation



## ⑤ Tilt & Swivel Adjustment



## ⑥ Cable Management Installation

