

# WOODEN CRATE DISASSEMBLY GUIDE

<1> Before disassembling the crate, please read this guide carefully and follow the steps in this guide.  
<2> Prohibit the use of violence dismantling, such as causing damage to the product, the merchant does not assume any responsibility.

## Need Tools:



Hammer\*1



Screwdriver\*1



Work gloves\*1



Unshakeable\*1

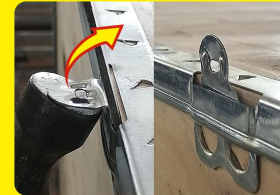
## Disassembly steps:



1. Wear work gloves to effectively prevent scratches.



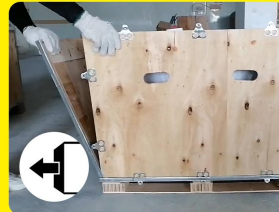
2. Insert a screwdriver into the latch, and pry the latch open.



3. Place a piece of iron on the back of the latch, then use a hammer to flatten the latch so that it is vertical.



4. Remove the top plank of the box.



5. Unlock both sides of the case.



6. Remove the front panel of the case.



7. Remove the front and back side boards of the case.



8. Remove the boards from both sides of the box.



**NERVOUS AND VIOLENT  
DISMANTLING**