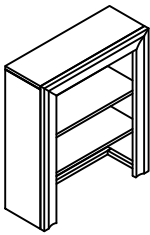
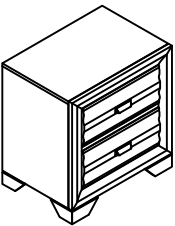
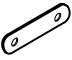



# ASSEMBLY INSTRUCTION

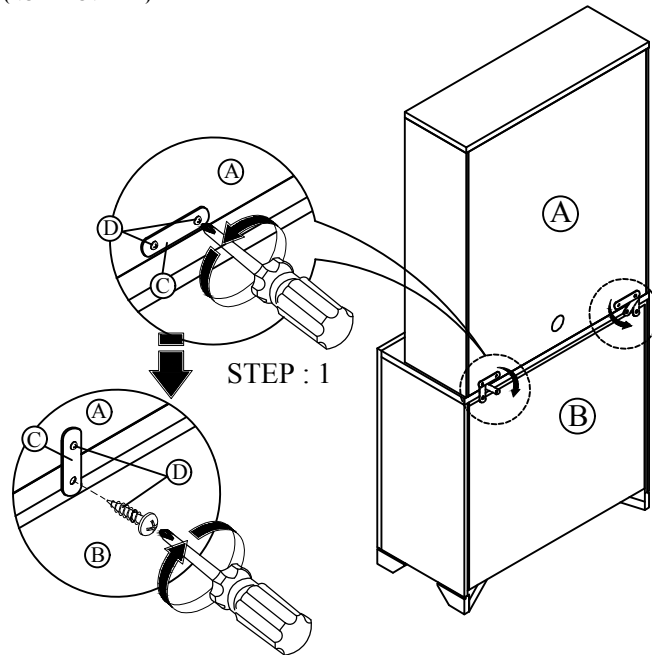
DESCRIPTION :

PIER

Thank you for purchasing this quality product. Be sure to check all packing material carefully for small Hardware which may have come loose inside the carton during shipment. Identify and count all Hardware and compare with the Hardware List below.

NO	PARTS & HARDWARE	QTY.
A	PIER 	1PC
B	NIGHTSTAND 	
C	I BRACKET (ATTACHED TO PIER) 	2PCS
D	PH SCREW M4 x 16mm (ATTACHED TO PIER) 	4PCS

**STEP 1 : PLACE PIER (A) ON TOP OF NIGHTSTAND (B). DETACH PH SCREW (D) ATTACHED AT I BRACKET (C) AS SHOWN. ROTATE I BRACKET (C) 90° DOWNWARD, THEN TIGHTEN PH SCREW (D) USING PHILLIPS SCREWDRIVER (NOT PROVIDED)**



**STEP 2 : ADJUST THE ADJUSTER LOCATED AT BOTTOM OF NIGHTSTAND (B) ACCORDING TO GROUND LEVEL**

