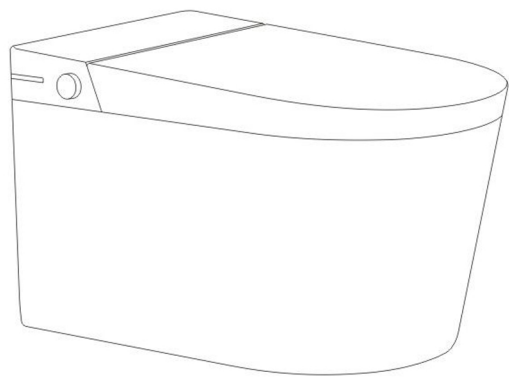


Basic Intelligent Function

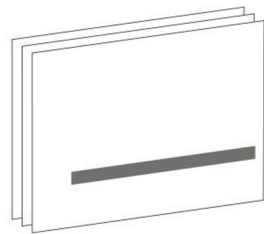
Integrated intelligent toilet

Operation instructions

01/Packaging List

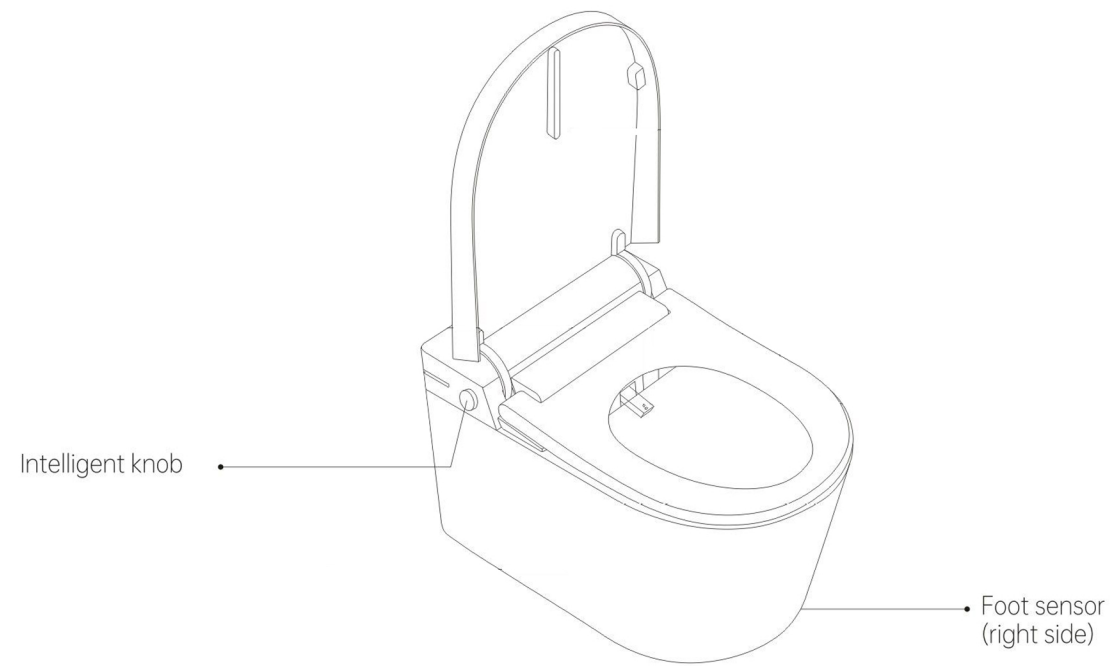


Intelligent toilet



Instructions and other
printed materials

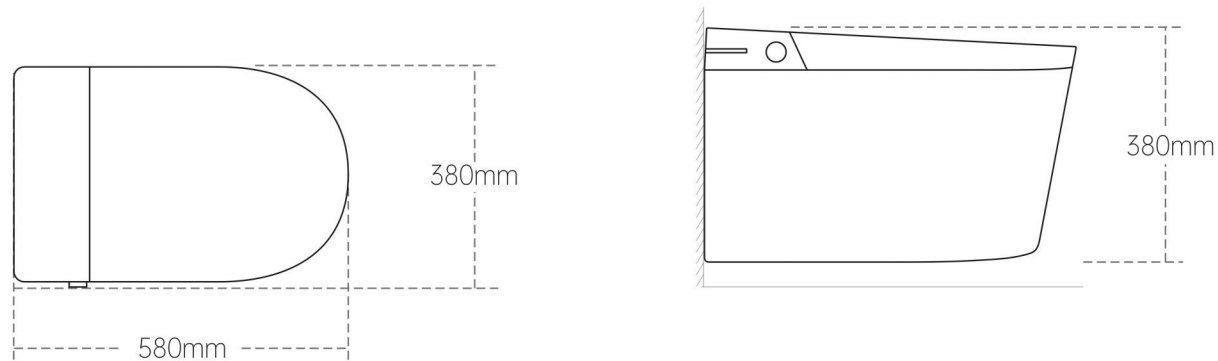
02/Component Introduction



03/Product Installation

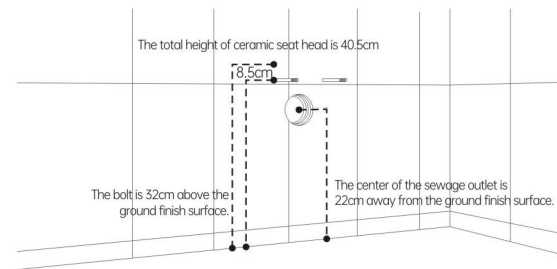
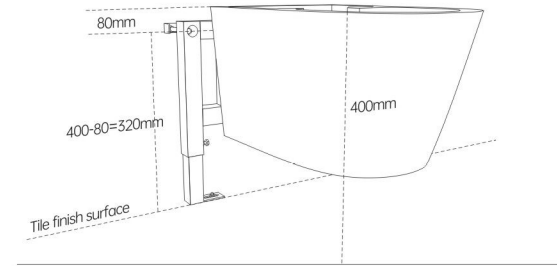
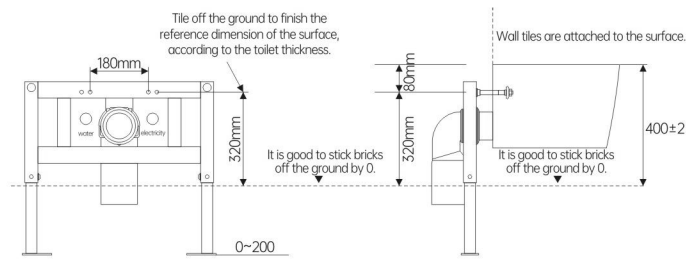
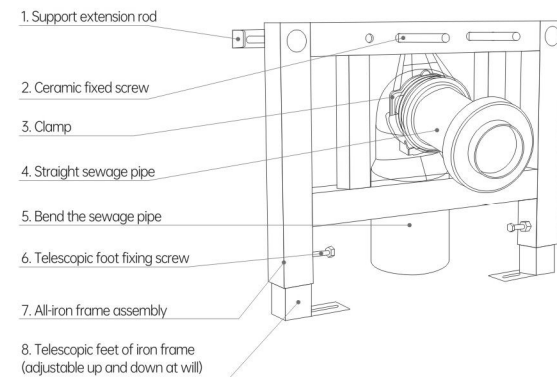
Confirmation of installation environment and specifications

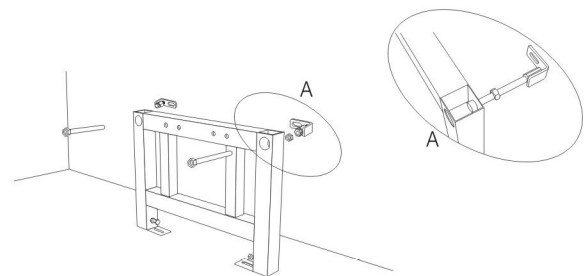
1. Check if the distance between the sewage pipes and the flatness of the bathroom meet the installation requirements.
2. Check whether the water circuit, water supply pressure, and circuit system comply with the installation requirements.
3. In addition to ensuring the required space for installation, please pay attention to whether surrounding objects (doors, cabinets, etc.) interfere with the installation and functional use of the product (seat cover, seat ring opening and closing, etc.).
4. If there is a need to renovate waterways, circuits, etc., please seek professional assistance.



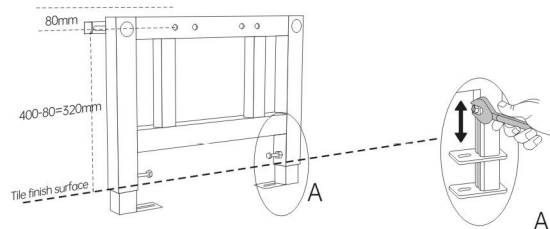
Reminder: The dimensions, accessories, user interface, etc. shown in this product are schematic diagrams for reference only. Due to product updates and upgrades, there may be slight differences between the actual product and the schematic diagram. Please prioritize the actual product.

Installation of iron frame into wall

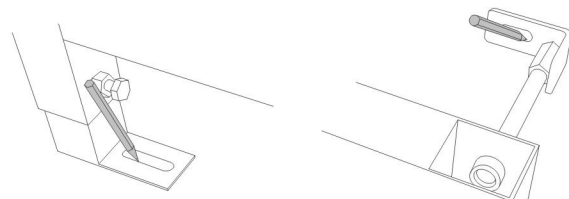




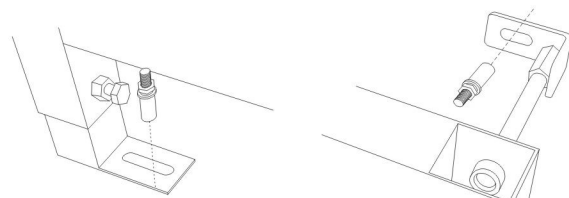
Confirm the installation position
Fasten the wall fixing angle iron, slotted bolt (2 each), external hexagon nut and flat pad (2 each) with the iron frame.



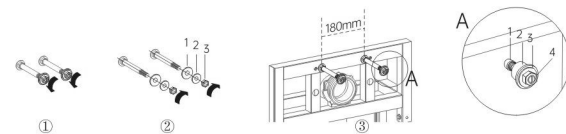
Use a wrench to loosen the screws (2 screws) from the iron frame in the reverse direction, then adjust the required height, measure the height of the mounting hole of the ceramic body by 8cm, calibrate the horizontal and vertical with a spirit level, and then tighten the screws (2 screws) in the clockwise direction.



Mark the position of the expansion screw with a pen, then remove the iron frame, and punch holes according to the mark after removal.



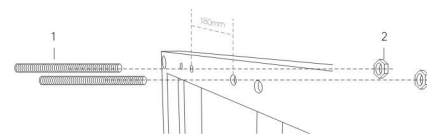
After drilling the hole, move the iron frame back to its original position and drive the expansion screw into the hole.
After fixing, measure the horizontal height, and calibrate the horizontal and vertical with a spirit level.



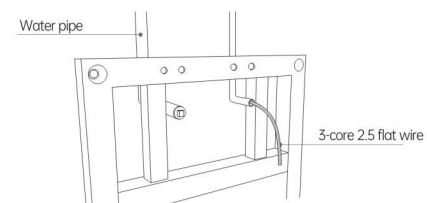
As shown in Figure ①, screw out the nuts and washers at the slotted position of two bolts, as shown in Figure ②, and turn two decorative washers (Figure 1), two washers (Figure 2) and two nuts (Figure 3) into slotted bolts. As shown in Figure ③, screw the bolt assembly to the iron frame.

The ceramic interior is as shown in Figure A: bolt (Figure 1), decorative gasket (Figure 2), gasket (Figure 3) and nut (Figure 4).

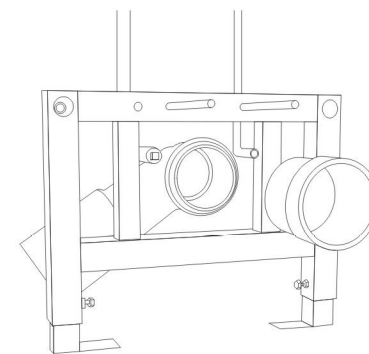
Note: according to the hole spacing of the toilet, choose the iron frame with 180 hole spacing for installation!



Installation of fixing bolts of iron frame, bolts (Figure 1) and nuts (Figure 2).



Install the tap water pipe and power supply, and the power supply should put a 3-core 2.5-flat wire separately from the electric box.



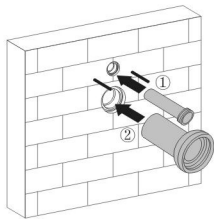
Install the 90-degree sewage pipe and dust cover from the iron frame.



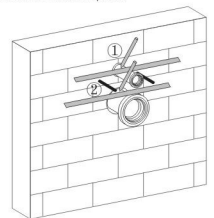
As shown in Figure ①, after the upper clamp of the sewage pipe is removed, the toilet sewage pipe is assembled with the lower clamp of the sewage pipe by selecting an appropriate slot as shown in Figure ②.

Note: When the toilet drain pipe is assembled with the sewer pipe, the redundant part of the toilet drain pipe shall be sawed off according to the actual situation.
Clip the upper drain pipe into the lower drain pipe, as shown in Figure ③.

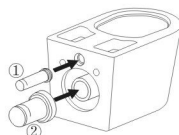
Wall-mounted toilet installation (some models)



As shown in Figure ①, insert the straight water inlet pipe of the toilet into the L-pipe of the water tank pasted with the ceramic tile wall.
As shown in Figure ②, insert the straight toilet drain pipe into the toilet drain pipe attached to the ceramic tile wall.
Note: Be sure to insert it in place!



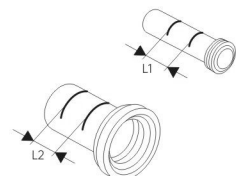
Block the toilet water inlet straight pipe at an appropriate position on the vertical board, draw a line with a pencil, and then pull it out, as shown in Figure ③.
Block the toilet drain pipe at the proper position of the vertical board, draw a line with a pencil, and pull it out after drawing it, as shown in Figure ④.



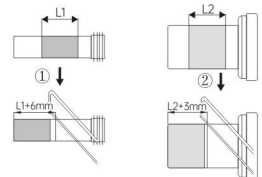
Insert the toilet water inlet straight pipe and the toilet water inlet ring into the water inlet of the wall-hung toilet as shown in Figure ③.
Insert the toilet blowdown straight pipe and rubber ring into the sewage outlet of the wall-hung toilet as shown in Figure ④.
Note: Be sure to insert it in place!



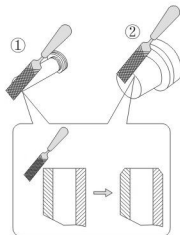
Draw a line by blocking the pencil in the proper position of the vertical wooden board with the toilet water inlet straight pipe. After the line is drawn, it needs to be pulled out, as shown in Figure ⑤.
Draw a line by blocking the pencil in the proper position of the vertical wooden board for the straight toilet drain pipe, and then pull it out, as shown in Figure ⑥.



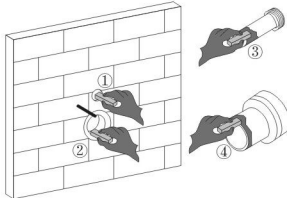
Draw the assembly line of the toilet water inlet straight pipe, the water tank L-pipe and the wall-hung toilet water inlet, and mark the actual size (as the redundant part), as shown in Figure L1.
Draw the assembly lines of the straight toilet drain pipe, the toilet drain pipe and the wall-hung toilet drain outlet, and mark the actual size (as the redundant part), as shown in Figure L2.



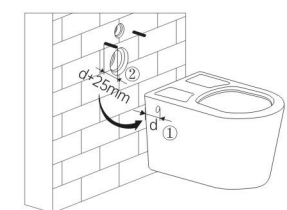
Move the surplus part of the middle size of the toilet water inlet straight pipe to the side opening, and then saw it off after adding 6mm, as shown in Figure ⑦.
Move the excess part of the middle size of the toilet drain pipe to the side mouth, and then saw it off after adding 5mm, as shown in Figure ⑧.



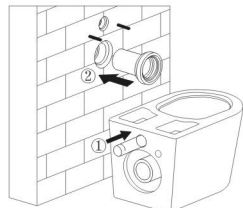
Chamfer the edge of the toilet water inlet straight pipe evenly with a file, as shown in Figure ⑦.
Chamfer the edge of the straight toilet drain pipe evenly with a file, as shown in Figure ⑧.



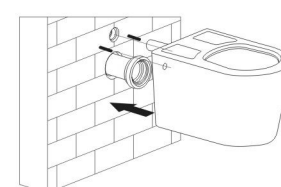
Apply appropriate silicone oil to the seal ring of L pipe of water tank as shown in Figure ⑨, apron of sewage pipe as shown in Figure ⑩, straight pipe of toilet water inlet as shown in Figure ⑪ and straight pipe of toilet sewage as shown in Figure ⑫.



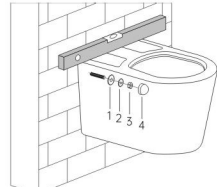
Measure the actual size of the toilet at D as shown in Figure ⑬. Install one bolt on each side into the toilet and add 25mm after measuring the D dimension, as shown in Figure ⑭.



Insert the toilet water inlet straight pipe and the toilet water inlet ring into the water inlet of the wall-hung toilet as shown in Figure ⑬. Insert the straight toilet drain pipe into the toilet drain pipe opening on the wall as shown in Figure ⑭.
Note: Be sure to insert it in place!

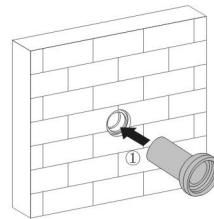


Align the bolts on both sides to the toilet mounting hole, align the toilet water inlet straight pipe to the L-pipe of the water tank, align the toilet sewage outlet straight pipe and rubber ring to the toilet sewage outlet before inserting, and make sure to insert them in place.

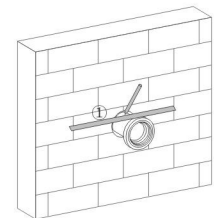


Decorative gasket (1 in the figure), gasket (2 in the figure), nut (3 in the figure), bolt decorative sleeve (4 in the figure), and two bolts installed on both sides. Make sure that the toilet is measured (parallel) with a level gauge.

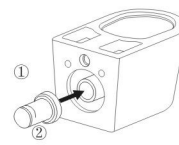
Floor-standing toilet installation (some models)



As shown in Figure ①, insert the straight toilet drain pipe into the toilet drain pipe opening on the wall as shown in Figure ①.
Note: Be sure to insert it in place!



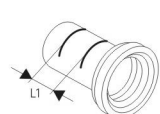
Block the toilet drain pipe with a vertical wooden board at an appropriate position, draw a line with a pencil, and then pull it out, as shown in Figure ②.



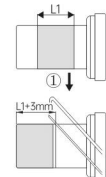
As shown in Figure ③, insert the toilet drain straight pipe and rubber ring into the toilet drain outlet.
Note: Be sure to insert it in place!



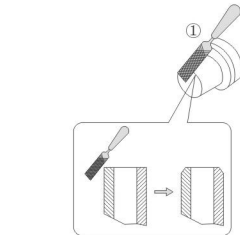
Draw a line by blocking the pencil with a vertical wooden board at an appropriate position, and then pull it out, as shown in Figure ③.



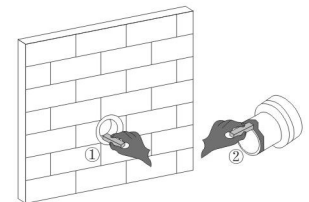
Draw the assembly lines of the straight toilet drain pipe, the toilet drain pipe and the wall-hung toilet drain outlet, and mark the actual size (as the redundant part), as shown in Figure L1.



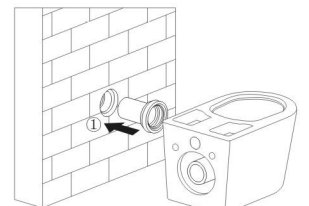
Move the excess part of the middle size of the toilet drain straight pipe to the side mouth, and then saw it off after adding 5mm, as shown in Figure ④.



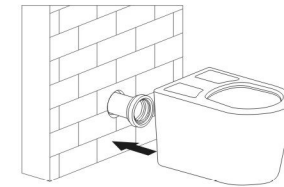
Chamfer the edge of the straight toilet drain pipe evenly with a file, as shown in Figure ④.



Apply appropriate silicone oil to the apron of the sewage pipe as shown in Figure ⑤ and the straight pipe of the toilet as shown in Figure ⑥.



Insert the straight toilet drain pipe into the toilet drain pipe opening on the wall as shown in Figure ⑤.
Note: Be sure to insert it in place!



Align the toilet drain straight pipe and rubber ring to the toilet drain outlet before inserting, and be sure to insert them in place.



After installing the toilet, please don't move the toilet or shake it from side to side, otherwise the sealing between the toilet drain straight pipe and the rubber ring may be damaged, resulting in water leakage. Glass glue is applied to the bottom of the toilet to fix the toilet.

04/ Safety precautions

· This product is a Class I appliance. For your life safety and property safety, please read carefully and observe the following precautions.

· In order to prevent the danger of arbitrarily resetting the fuse, this product seals the fuse; it is forbidden to use fuses that do not meet the product specifications.

· Description of signs and drawings is as follows:

Warning: It means that improper handling of the product may cause death or serious injury to the user.

Caution: It means that improper handling of the product may lead to injury or material injury to the user.

Prohibition: it means that it is not feasible and prohibited.

Mandatory: it means that it must be observed.



LANDING

· Confirm whether this product is reliably grounded.

· When the power supply is not grounded, it may lead to leakage and electric shock.

· Working grounding, please ask the electric company or electric operators for assistance.



PROHIBIT

· Prohibition of disassembly: it is forbidden to disassemble, repair or transform this product unless the after-sales maintenance personnel or designated professional maintenance personnel of our company.

Otherwise, it may cause fire, electric shock and other accidents.

· Do not splash water: Do not add water or detergent to the product body or wet the power plug.

Otherwise, it may cause fire, electric shock and other accidents.

· No kindling: Do not put lighted cigarettes or combustibles near or into the product.

May cause fire or electric shock and other accidents.

· Do not touch with wet hands: Do not touch or plug the power plug with wet hands.

Otherwise, it may cause electric shock and other accidents.

· Do not use faulty products, otherwise it may lead to fire or electric shock and indoor water seepage.

Please unplug the power supply and close the water valve to terminate the water supply under the following circumstances:

-When the main body or water pipe leaks

-When the product is cracked or damaged.

-When there is abnormal noise or smell.

-When the product smokes

-When the product is abnormally hot.

When the seat ring or cover plate is damaged, please stop using it to avoid dangerous situations.

Please be sure to unplug the power supply, turn off the water source and contact the dealer or after-sales service center.

Otherwise, it is easy to get an electric shock and fire.

· It is forbidden to use water sources other than tap water or potable water.

Otherwise, it may cause cystitis, dermatitis and electric shock and fire caused by internal corrosion of machinery.

· Do not bend or flatten the connecting water pipes.

Otherwise, it may lead to water leakage, reduced water pressure or no water.

· It is forbidden to split the water pipe with the water stop valve open.

Otherwise, it may cause water splashing, water spraying or water leakage.

· It is forbidden to use loose, shaking and other bad power sockets.

Otherwise, it may lead to fire or electric shock and other dangerous situations.

· It is forbidden to exceed the specified specifications of power supply or socket, and only 220V AC can be used.

Otherwise it is easy to cause fire and electric shock.

· It is forbidden to arbitrarily pull, damage, forcibly bend and twist, stretch, curl, bundle, bear load, excessively pinch or destroy the power plug and power cord.

Otherwise, the damage of the power plug and power cord will lead to electric shock or fire.

· If the power cord is damaged, in order to avoid danger, it must be maintained and replaced by the manufacturer, after-sales service personnel or professional maintenance personnel.

Otherwise it is easy to cause fire and electric shock.

· Do not use it in lightning weather (please unplug the power supply when there is lightning nearby).

Otherwise, accidents or failures may occur.

· Do not pour urine into the outlet of warm air.

Otherwise, there is a danger of electric shock.

· Do not put fingers or other objects in or block the outlet of warm air. Do not cover the warm air outlet when the product is in use.

Otherwise, it may cause burns, electric shock or burning of accessories.

· Do not discard any sundries except excrement and toilet paper in the toilet.

Otherwise, it may cause the toilet to be blocked, sewage to come out or indoor water seepage.

· Do not put heavy objects on the toilet lid, and do not hit this product. Product breakage may lead to personal injury, and the toilet is broken.

It may cause problems such as room flooding.



PAY ATTENTION TO

· Do not use the "high" and "medium" settings of seat temperature and warm air/air temperature for a long time.

Otherwise, there will be a danger of burns if you use it for a long time.

· When using the cleaning and drying function, please keep the seat state, that is, the skin is close to the sensing area of the seat ring.

Otherwise, the product will stop cleaning or warm air drying.

· Do not spray urine directly on the product body or nozzle/cleaning tube.

Otherwise, dirt will be generated, leading to blockage.

· Please use the new hose assembly that comes with this machine, and the old assembly cannot be reused. If there are other appliances connected to the water source randomly, please replace them together.

Otherwise, it is easy to cause water leakage and property loss.

· Do not use it in the bathroom that is too humid and easy to soak in water. Avoid spraying water on this product or washing it with water to prevent water from entering the product and causing losses.

Otherwise, it is easy to cause electric shock and fire.

· When there is a sudden power failure, please unplug the power plug and close the angle valve to prevent water leakage.

Otherwise, it is easy to cause water leakage and property loss.

· Please avoid direct sunlight or heating equipment near this product.

Otherwise, the product may become discolored.

· To avoid the danger caused by the wrong reset of the thermal circuit breaker, please do not supply power through external switching devices, such as timers or circuits that are connected to be switched on and off by common components at regular intervals.

· When it is not used for a long time, please unplug the power supply, turn off the water source and drain the accumulated water inside the product.

Otherwise, the damage caused by frozen internal water will lead to fire and water leakage.

· In cold winter, when the product is transported for a long distance or stored for a long time, the remaining water in the product may freeze. To prevent damage caused by freezing, please take anti-freezing measures.

Otherwise, the damage caused by frozen internal water will lead to fire and water leakage.

· In the same room or area where this product is installed, it is necessary to install a water stop valve at a convenient position, which can cut off the water inlet channel of this product in case of emergency without tools.

Otherwise, the unexpected failure of this product may lead to the loss of users.

· Please don't bury cementing materials (cement mortar, etc.) in the toilet seat to prevent the toilet from cracking due to expansion.

· Unplug the power plug regularly and wipe the dust on the power plug with a dry cloth.

Otherwise, when the insulation is poor, it will cause a fire.

· Do not use unsuitable cleaning agents (such as concentrated sulfuric acid, concentrated nitric acid, glacial acetic acid, carbon chloride, chloroform, acetone, butanone, benzene, toluene, phenol, cresol, dimethylformamide, methyl ether, soybean oil, acetate, 40% nitric acid, concentrated hydrochloric acid, 95% alcohol, gasoline, kerosene, brake oil, etc.) when cleaning and maintaining the toilet.

Otherwise, the plastic part may crack, or cause personal injury, electric shock or fire.

· Do not lean back, stand on the cover, or roughly open and close the seat cover and seat ring to avoid damage.

Otherwise, it is easy to be damaged and cause personal injury.

· When using the battery, please follow the following operation.

Only batteries that meet the national regulations are allowed to be used. Misuse of batteries may cause safety protection ineffective and lead to explosion, fire and other dangers. Do not place the battery in high temperature environment, such as sunshine, fire, oven, etc., which may lead to explosion and leakage of flammable liquid or gas. Do not disassemble, bump, squeeze or cut the battery, which may cause explosion.

The battery is swollen and deformed, please stop using it immediately. Please keep the battery away from children. If you swallow it or put it in any part of your body, please seek medical assistance immediately.



FORCE

· People (including children) with physical, perceptual and intellectual disabilities or lack of experience and common sense should be accompanied and guided by adults.

· Children should be supervised to ensure that they will not play with this appliance. Otherwise, personal injury may be caused.

· Please help the following people turn off or turn down the temperature gear when using the heat preservation seat \ warm air drying function:

Children, the elderly and other people who cannot adjust the appropriate temperature themselves;

People who are not physically free can't make a conscious response;

People who may fall asleep after taking sleeping pills, drunkenness, fatigue, etc.

· When installing/replacing the filter screen and filter, it is necessary to tighten it, and close the water supply channel and angle valve.

Otherwise, it is easy to cause water leakage.

· When the product leaks, please close the waterway valve to stop the water supply.

· It is forbidden to use this product in the environment below 0°C.

Otherwise, freezing may cause water pipes or main bodies to be damaged, resulting in water leakage or failure.

Maintenance and cleaning



PAY ATTENTION TO

This product is an electronic product, please pay attention to prevent water from entering the product.

The seat induction part of the seat ring should be kept clean, so as to prevent the seat ring and other articles from wrapping the seat induction area.

Dirty sensing parts and tight adhesion of foreign objects may cause the product to run incorrectly or not.

Do not use detergent to clean the filter, please use clean water.

· Plastic appearance

The exterior parts of the toilet are mostly made of plastic. To prevent the plastic from being damaged and scratched, please clean and maintain it according to the following methods:

Usually, please wipe it with a cloth that is soft in nature.

If necessary, please wipe it with a cloth dipped in some neutral kitchen cleaner, and then wipe it with water.

After cleaning the ceramic part, the detergent remaining on the toilet plastic should be wiped clean with a soft cloth.

Because it is an electrical product, in order to prevent water from entering, it must be dried with a soft cloth after cleaning.

· Clean the filter screen of the angle valve (it is recommended to clean it every 3 months)

① Close the toilet angle valve and stop the water supply.

② Use a coin or a flat-blade screwdriver to clamp into the slot of the front cover of the angle valve, and rotate counterclockwise to remove the water inlet filter.

③ After the filter screen is removed, rinse the attached dirt with water. Generally, small attachments can be removed with a toothbrush, etc. For larger ones, please use a cotton swab to remove them.

④ Screw the filter back to the angle valve clockwise, so be sure to tighten it, otherwise it will cause water leakage.

· Clean the toilet washer.

① When you are away from the seat, click the "self-cleaning" button on the remote control, and the washer nozzle will stretch out and start drying.

② Clean the surface of the cleaner with a soft brush or toothbrush, and clean the dirt/scale on the nozzle.

(The self-cleaning mode will automatically stop after 90 seconds, so you can click the "Stop" button to turn off the function in advance; Don't push the nozzle)

· Freezing in winter (when the ambient temperature is lower than 4°C)

When you don't use it for a long time, such as business trip or travel, please empty the toilet to store water to avoid freezing and cracking.

① Close the water supply angle valve, press the flush button on the remote control, start flushing and empty the water tank.

② Enable the self-cleaning function to empty the residual water in the toilet.

③ Loosen the water supply pipe on the angle valve and dump the accumulated water in the pipe.

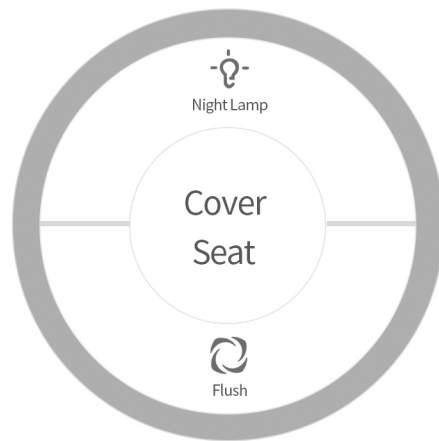
④ Cut off the power supply to the toilet.

(Pulse smart toilets need to turn off the water supply before draining after flushing is started.)

After the product is stored in a low temperature environment for a long time, if it is moved to a high temperature room, the product should be left for 30 minutes until it is naturally thawed, and then the water should be turned on to avoid the internal failure of the appliance. If it is frozen, unable to flush or clean, the cloth soaked in hot water can be covered on the water supply hose of the toilet or the connection part of the water supply hose to thaw it.

(Do not pour hot water with high temperature or blow hot air on the product body, water supply hose and other objects).

Doorbell type switch



MJ-T010Q

Knob on Side of Toilet



Seat Temperature Adjustment

Turn Knob shortly towards the direction of "+" to adjust the seat temperature in four levels:

First: OFF (1 beep is turn off) 、 Second (2 beeps) 、

Third (3 beeps) 、 Fourth (3 beeps)

levels shift: off—low—middle—high, four gear change

Pre-Wetting

After seating, the surface of the toilet will automatically flush for 1s, and the ceramic wall will be pre wetted for seating and moistening

Auto Flushing

Flush automatically in 10s after standing up from toilet seat

Foot Sense Flush

When the foot approaches the sensor within 5 cm, the automatic flushing function is activated

Night Light

Turn Knob towards the direction of "-" and hold to turn on and off the Night Light

No Power Flush

Without power, you can press the side standby flush button to flush