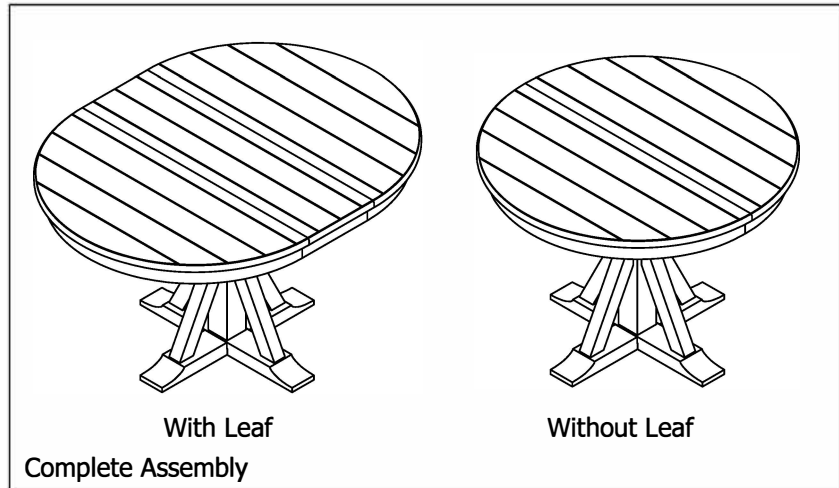


ASSEMBLY INSTRUCTION

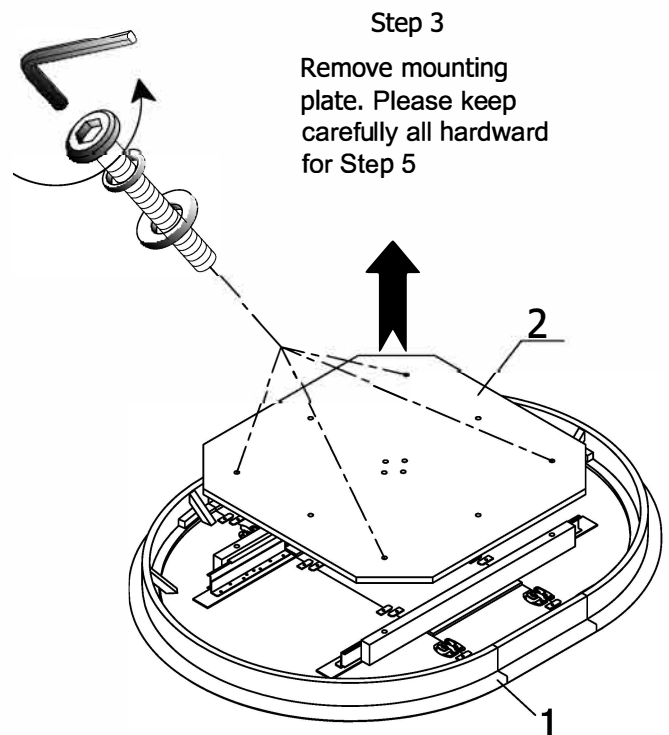
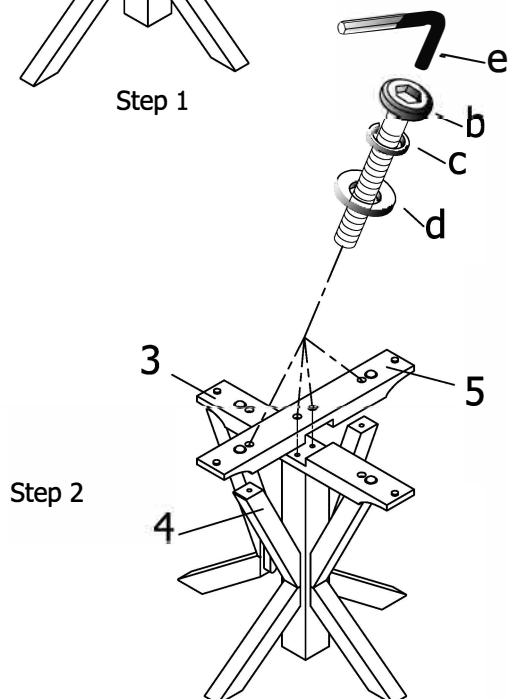
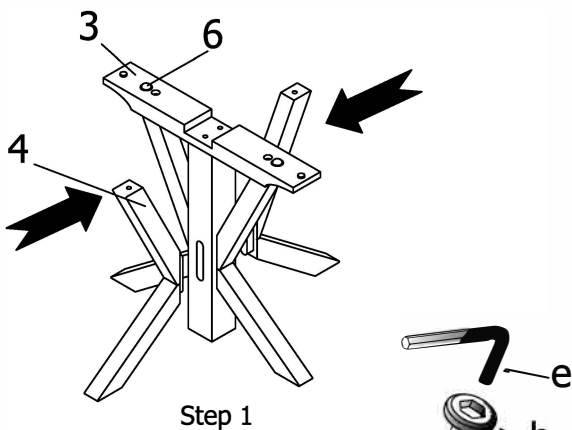
DESCRIPTION: Round Table

Thank you for purchasing this quality product. Be sure to check all packing materials carefully for small parts which may have come loose inside the carton during shipment. Identify and count all parts and compare with the parts List Below.



PARTS LIST

NO.	SKETCH	DESCRIPTION	Q'TY
1		Table Top	1pc
2		Mounting plate	1pc
3		Post	1pc
4		Leg	2pcs
5		Lower Base	1pc
6		Adjustable leveler	4pcs
7	HARDWARE LIST		1bag
NO.	SKETCH	HARDWARE	Q'TY
a		5/16"x18x1-3/4"	6pcs
b		5/16"x18x2-1/2"	4pcs
c		5/16"	10pcs
d		5/16"x19mm	10pcs
e		4mm	1pc
f		Ø10x30mm	2pcs



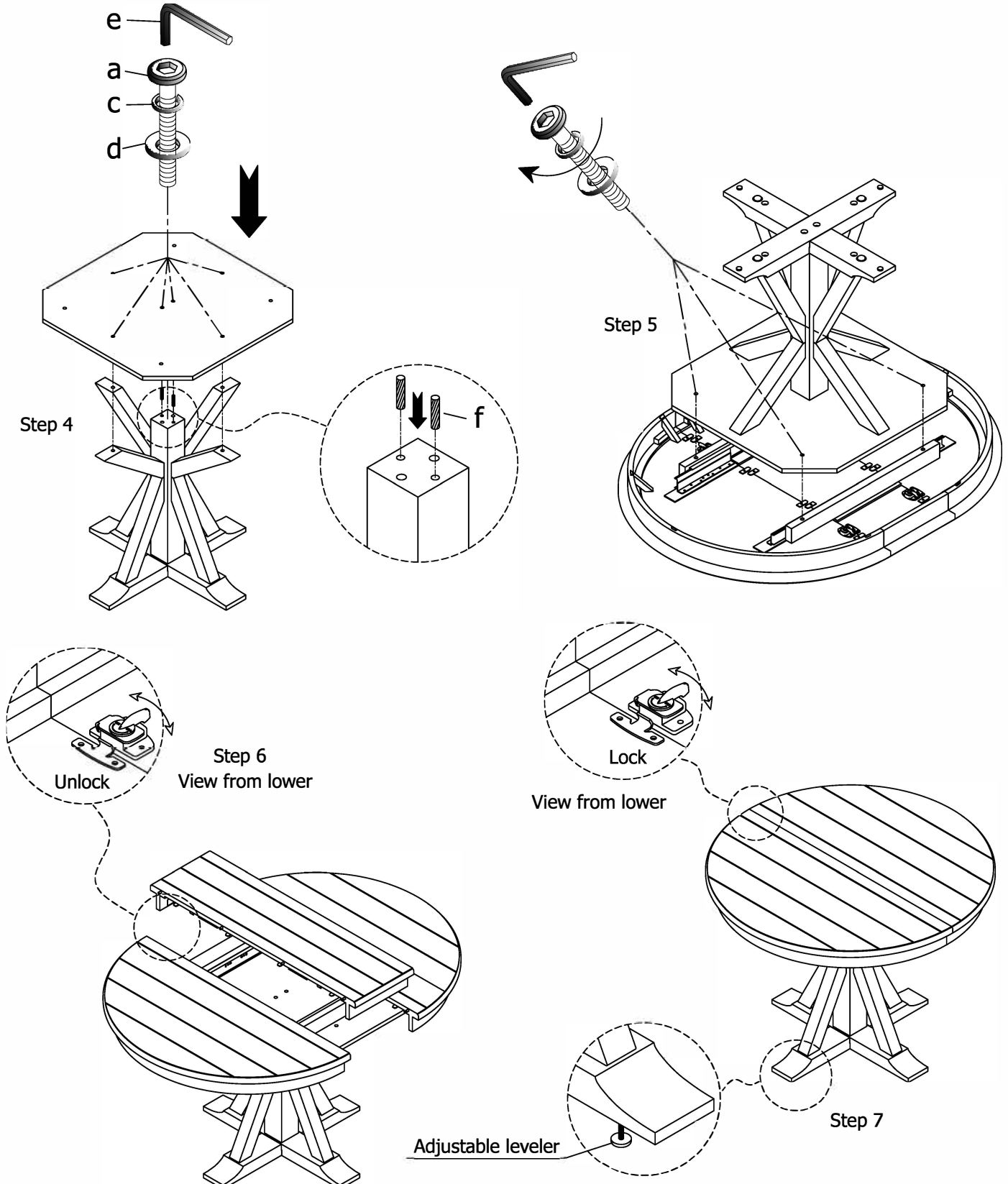
CLEANING INSTRUCTION

Clean the Table surface with a furniture polish and a soft cloth

ASSEMBLY INSTRUCTION

DESCRIPTION: Round Table

Thank you for purchasing this quality product. Be sure to check all packing materials carefully for small parts which may have come loose inside the carton during shipment. Identify and count all parts and compare with the parts List Below.



CLEANING INSTRUCTION

Clean the Table surface with a furniture polish and a soft cloth