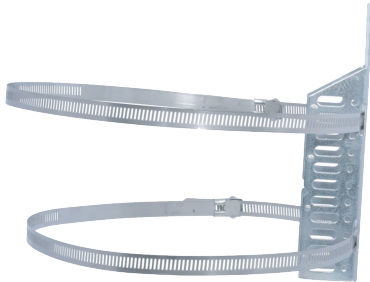




## INSTALLATION INSTRUCTIONS

# EXPANSION TANK BRACKET



- Secures Expansion Tank to Wall or Stud
- Stainless Steel and Galvanized Construction
- Includes mounting bracket, (2) support straps and stainless steel mounting screws

## INSTALLATION PROCEDURE

### STEP 1:

Place the mounting bracket vertically. Mark two mounting holes at least 4" apart. Place one hole at the upper slot on the bracket and the second hole below lower strap slots at the bottom of the bracket.

### STEP 2:

Drill pilot holes approximately 1/16" - 3/32" for included #14 x 1-1/2" stainless steel pan head screws. For hollow wall or concrete, install appropriate anchors at locations marked in Step 1 (IMAGE 1). Install screws or anchors.

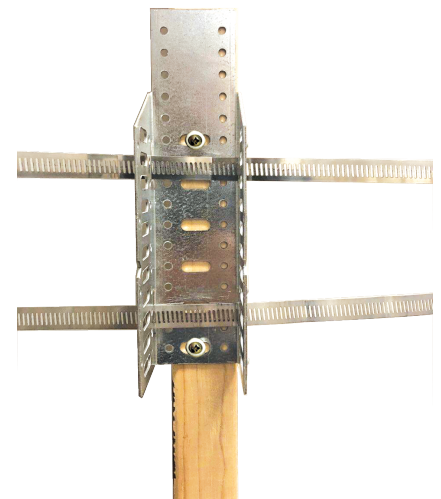


IMAGE 1



IMAGE 2

### STEP 3:

Slide the metal straps through the side slots in bracket (IMAGE 1), and pull about half way through.

### STEP 4:

Center expansion tank on bracket aligning notch in bracket with rib on tank (if applicable). Tighten straps around tank with 5/16" socket/nut driver. To avoid damaging tank, do not over-tighten (IMAGE 2).