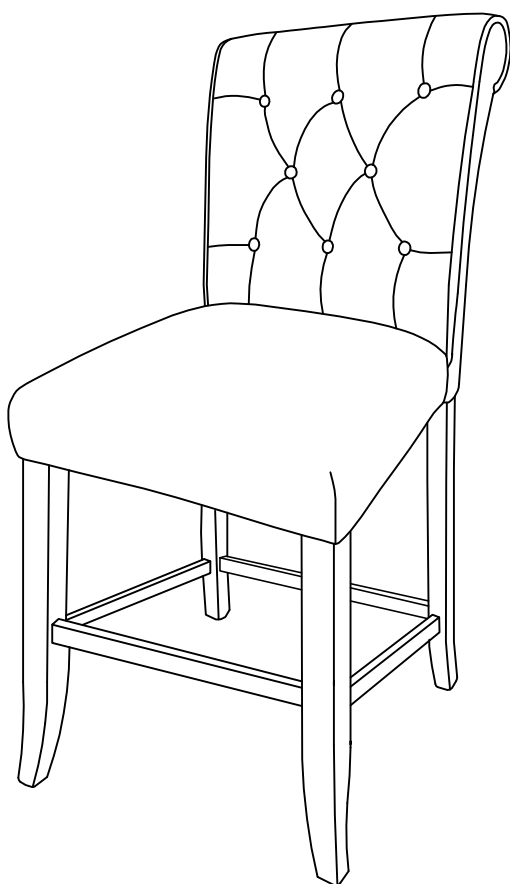


ASSEMBLY INSTRUCTIONS



TOOLS REQUIRED



Allen Wrench

(Included)



Phillips
Screwdriver

(Not Included)



2 - People
Recommended

ASSEMBLY RATING



EASY —————> DIFFICULT

The Assembly Rating is a 5-point system showing the level of effort needed to assemble a specific product.

PRE ASSEMBLY INTRODUCTION

We understand building ready-to-assemble furniture can be a challenging experience for some. To help avoid confusion, we have provided some helpful tips that may speed up the process.



Teamwork

ALWAYS have at least two people to help with transporting and assembling the product to avoid potential injury and/or damage.



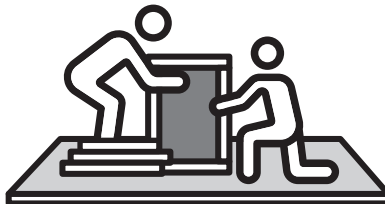
Suitable Location

Assembling near the area of the intended location is highly recommended.



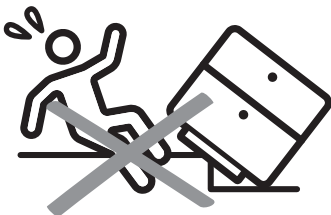
Sufficient Space

Make sure you have enough space to move around during the assembly.



Avoid Scratches

Use cardboard, blankets or a carpeted area while assembling furniture to prevent scratches.



Flat Surface

Make sure the furniture rests on a flat and level surface with each leg evenly touching the floor.

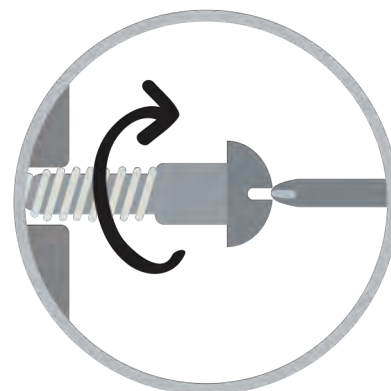
ASSEMBLY AND CARE ADVICE



FAILURE TO FOLLOW THE GUIDELINES BELOW MAY RESULT IN INJURY AND/OR PROPERTY DAMAGE.



Position each part correctly and insert screws or bolts into their respective holes.



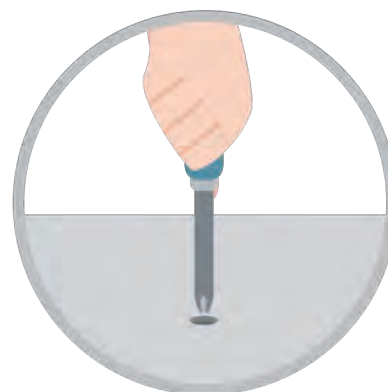
Turn clockwise to tighten and only tighten when step is completed or when instructed to do so.



Use the appropriate hand tools or power tools for assembly. Select steps, such as tightening screws and/or bolts, may require hand tools to avoid causing damage during assembly.



Save the instructions and store any supplied tools for later maintenance.



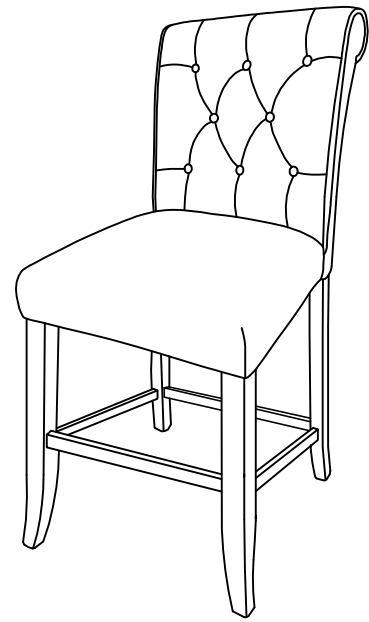
After two weeks, check and tighten any loose hardware and repeat again every six months thereafter.

IT IS THE USER'S RESPONSIBILITY TO MAINTAIN THE FURNITURE. THE HARDWARE MAY LOOSEN OVER TIME AND MAY CAUSE THE FURNITURE TO BE WOBBLY AND UNABLE TO SUPPORT ITS INTENDED WEIGHT CAPACITY. THIS MAY LEAD TO COLLAPSE AND MAY CAUSE SERIOUS INJURY.

CHAIR



- Please keep instructions for future reference.
- Check the quantity and irregularity of parts and hardware before you start.



x 2

PARTS

#1 1pc x 2



Backrest w/Legs

#2 1pc x 2



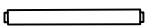
Seat Cushion

#3 2pcs x 2



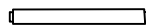
Front Leg (L & R)

#4 1pc x 2



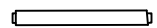
Front Stretcher

#5 1pc x 2



Left Stretcher

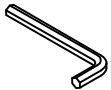
#6 1pc x 2



Right Stretcher

HARDWARE

#A 1pc x 2



Allen Wrench M5

#B 4pcs x 2



Bolt 5/16"x3-1/2"

#C 6pcs x 2



Bolt 5/16"x 2"

#D 10pcs x 2



Lock Washer 5/16"

#E 10pcs x 2



Flat Washer 5/16"

#F 6pcs x 2



Screw ϕ 5/16"x2"

#G 1pc x 2



Wood Dowel

ASSEMBLY INSTRUCTIONS

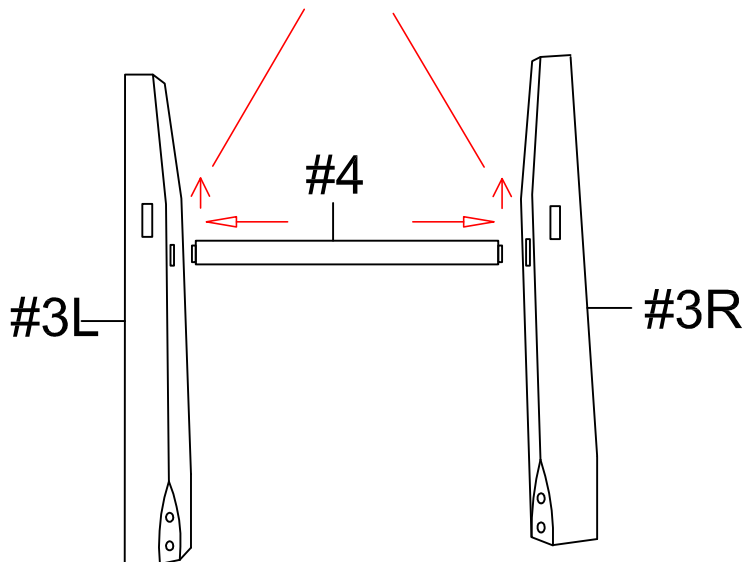
1

Align and attach the front stretcher (#4) to the gaps of the front legs (#3R/L).

Part #3 x2pcs

Part #4 x1pc

Make sure holes of front stretcher (#4) is facing where the arrow is pointing.



2

Prepare 4 bolts assembly by inserting lock washer (#E), then flat washer (#D) onto bolts (#C). Insert front legs (#3R/L) to the holes of the seat cushion (#2). Secure with bolts (#C).

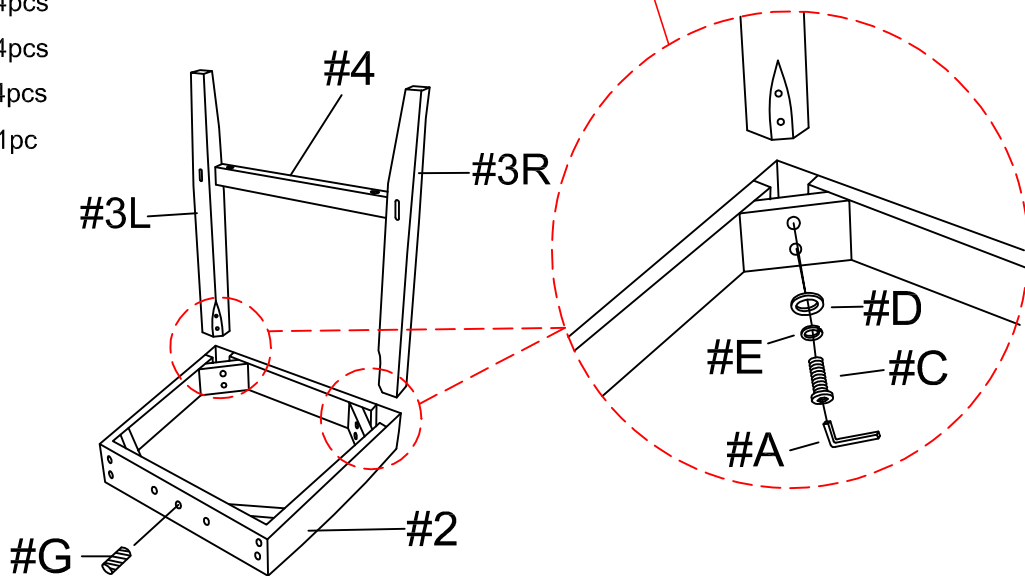
Part #2 x1pc

Hardware #C x4pcs

Hardware #D x4pcs

Hardware #E x4pcs

Hardware #G x1pc

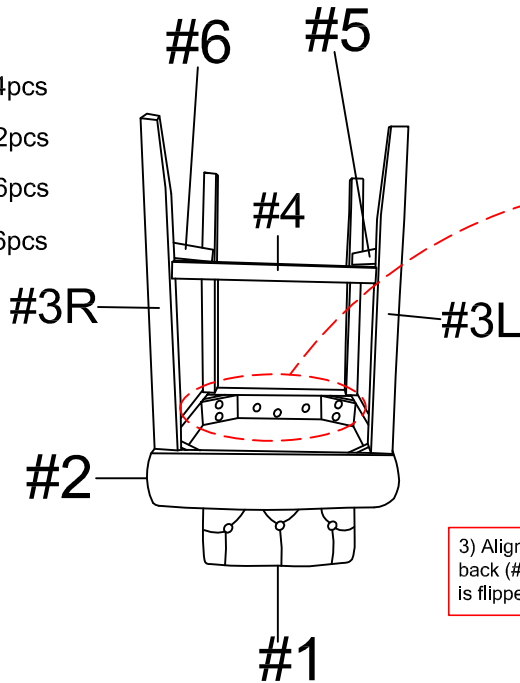


Insert wood dowel (#G) to the middle hole of the seat cushion (#2).

ASSEMBLY INSTRUCTIONS

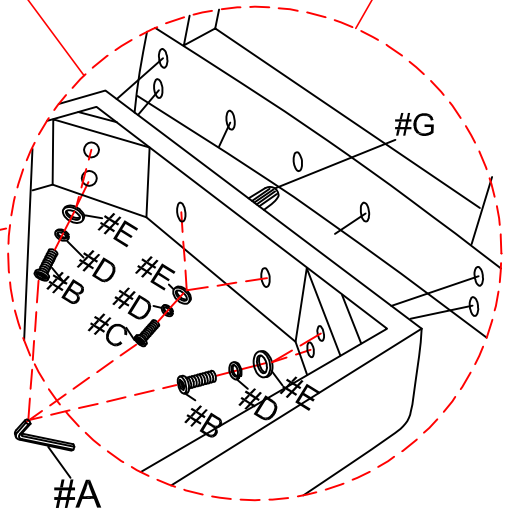
3

- Part #1 x1pc
- Part #5 x1pc
- Part #6 x1pc
- Hardware #B x4pcs
- Hardware #C x2pcs
- Hardware #D x6pcs
- Hardware #E x6pcs



1) Prepare 2 bolts assembly by inserting lock washer (#D), then flat washer (#E) onto bolts (#C). Align holes of the seat cushion (#2) to the holes of the chair back (#1). Secure middle holes with bolts (#C), but do not fully tighten.

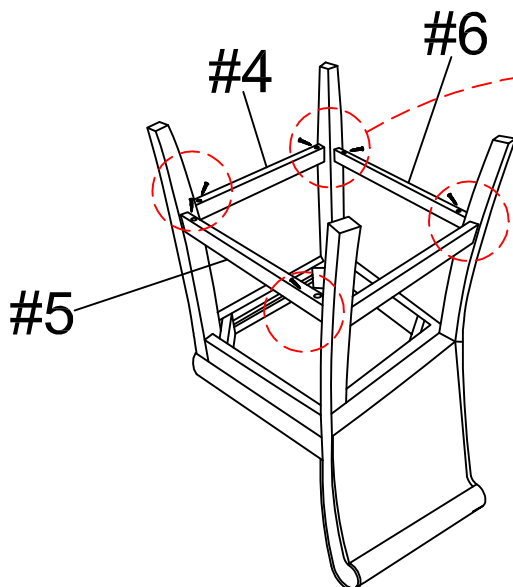
2) Prepare 4 bolts assembly by inserting lock washer (#D), then flat washer (#E) onto bolts (#B). Secure corner holes of the seat cushion (#2) with bolts (#B), but do not fully tighten.



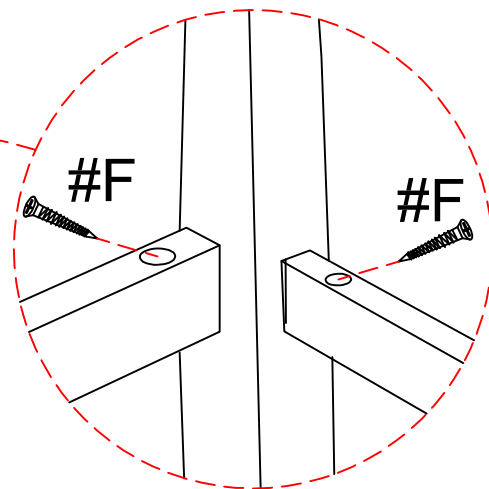
3) Align and insert stretchers (#5,6) to the gaps of the legs (#3R/L) and chair back (#1). Make sure holes of the stretchers (#5,6) are facing down when chair is flipped upright..

4

- Hardware #F x6pcs

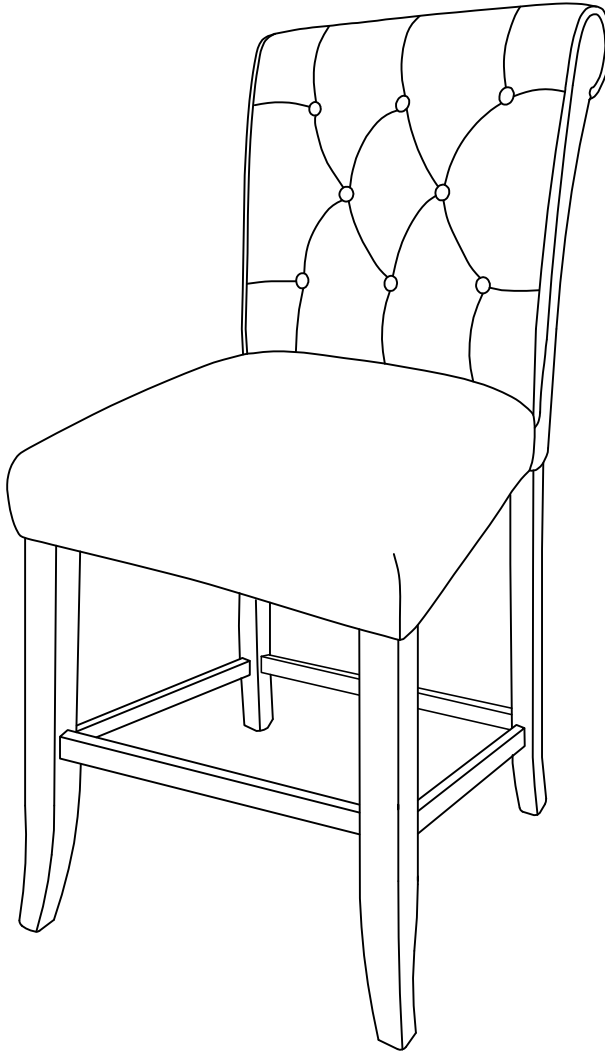


Secure all stretchers (#4,5,6) with screws (#F).



ASSEMBLY INSTRUCTIONS

5



ASSEMBLY COMPLETED



Please ensure the furniture rests on an even and flat surface. If the product wobbles or feels loose, double-check all bolts and/or screws are properly tightened and secured.



Keep this handy!

Please retain this instruction manual and any order-related information for future reference.



Lift, don't drag!

To avoid damage to product please always LIFT the product when transporting or adjusting the placement.