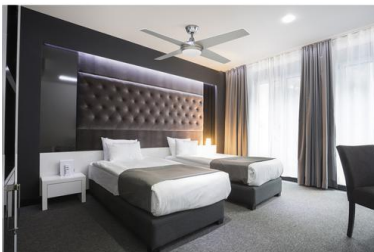
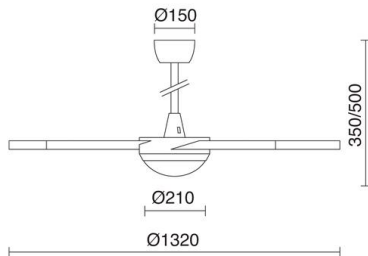


# MARINADA 635A-WL58B-03

Fan MARINADA LED SMD 13W 3000K Grey

MARINADA is a ceiling fan with an LED lamp that was manufactured with a combination of aluminum, glass and wood. This LED luminaire is manufactured with 4 blades and two finishes: gray and white. MARINADA has remote control and configurable in two heights: 35 cm or 50 cm total.



## GENERAL DATA

Category	Ceiling fans
Family	Marinada
Finish	[03] Grey
Location	Indoor
Installation	Ceiling
Body material	Aluminum
Diffuser material	Opal polycarbonate
Blade material	Wood
ETIM class	EC000532
EAN	8435256534368

## LIGHT SOURCES AND BEAMS

Sources	LED SMD 13W max. 1300lm 3000K
Energy efficiency	A++, A+, A
Beam	Direct symmetric

## TECHNICAL DATA

Dimensions	Height x Height 2 x Width (mm): 350 x 500 x 1320
IP	IP20
Protection class	Class I
Frequency	50/60 Hz
Input voltage	220-240V AC V
Weight	8.0 Kg
ECORAE category I	LED-C
Fan blades	4
Fan control	Remote control
Fan wattages	21.4W, 42.9W, 57W

## NOTES

\*2 heights (35 or 50cm total) with two rods included

Función inversa: Uso en verano e invierno

# MARINADA 635A-WL58B-03

Fan MARINADA LED SMD 13W 3000K Grey

## COMPLEMENTARY IMAGES

