

## Safety Warning

6. Do Not lift your feet from the ground when using. Standing or kneeling can cause injury.



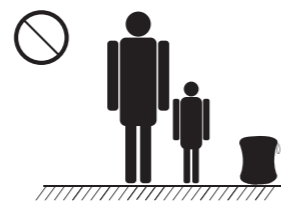
7. Do Not use if pregnant or preexisting medical condition.



8. Keep small children away from playing on the product.



9. This is not a toy, only use as the product for its intended use. Children should use only with Adult Supervision



### Tips

Diabetic patients with neuropathy or retinal injury, peripheral neuropathy, pacemaker, lumbar vertebrae, caudal vertebrae and other skeletal diseases and recent surgery should obtain the approval of the doctor before use. Do not use if your are pregnant.

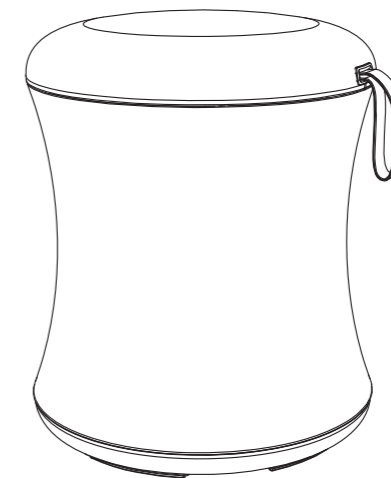
## Warranty

### Warranty Limited

1. One Year limited warranty of the product.
2. Within 7 days from the date of sale, consumers can choose to repair, replace, or return the product if a structural failure occurs or the cloth cover is damaged under normal use.
3. For repairs beyond the warranty period, the consumer shall bear the express freight, spare parts and repair Charge.
4. Please show this warranty card and original invoice when repairing.

### Below issues are not covered by the warranty

1. The product is not used for its intended use, improper handling.
2. Damage caused by attempted disassembly and or improper maintenance by a maintenance center not designated.
3. Damage caused by force majeure.
4. Damage caused by abnormal indoor / outdoor environment such as exposure to rain, sunlight, high heat/temperature, etc.
5. Product listed on the invoice is not consistent with the product received to be repaired.

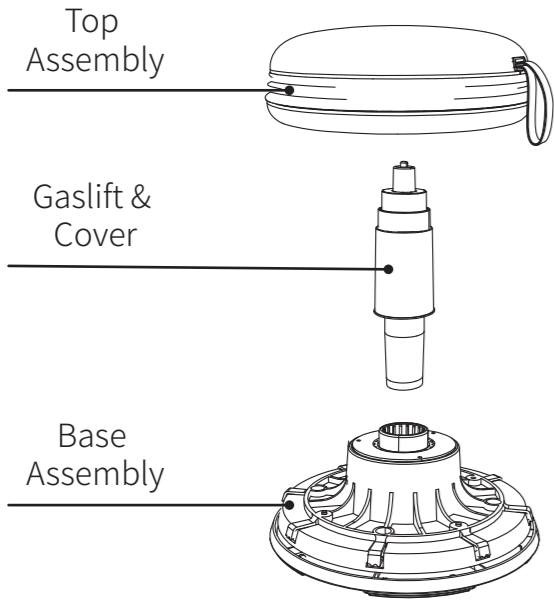


## User Manual

Thanks for purchasing this product!  
Please read the manual completely before assembling and use.

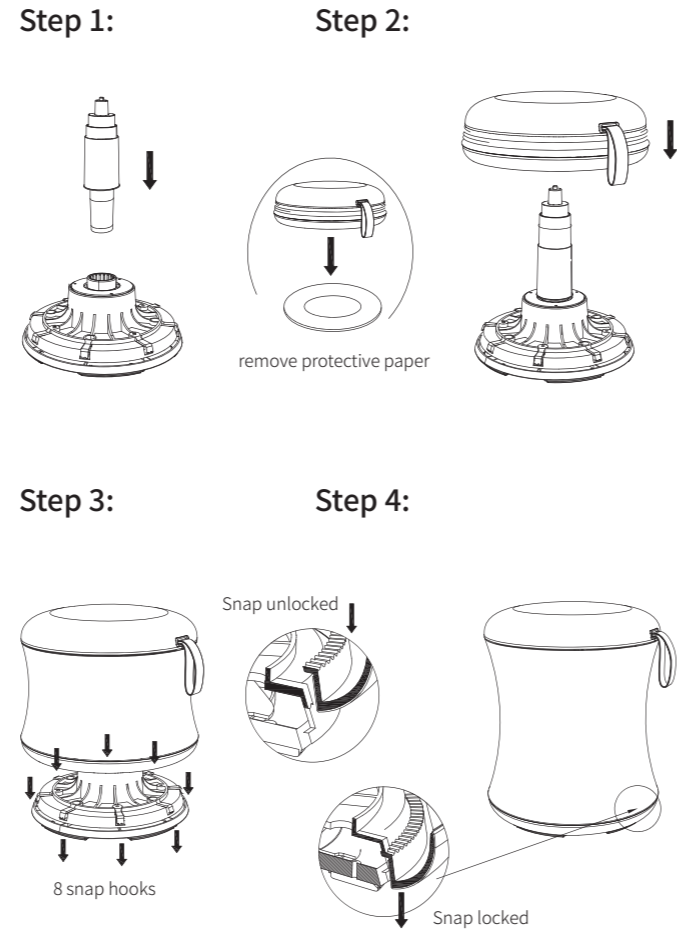
# Product Profile

Part Name:



1

# Assembly Instuction

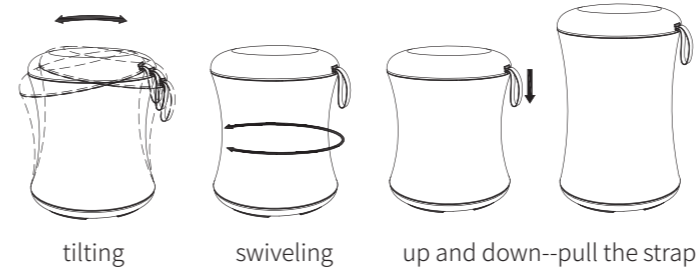


**⚠ WARNING:** To ensure the safety and stability of the product, DO NOT attempt to disassemble once the UP300 is assembled following all steps. Attempting to remove parts can effect the performance of the product.

2

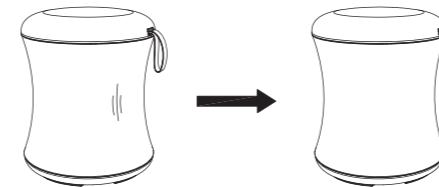
# User Instructions

## 1. Functions

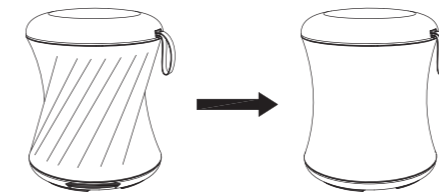


## 2. Fabric recovery

After an extended period of time at the high position, the fabric will appear loose when moving the UP300 to a lower position, The fabric will "recover" and appear without wrinkles after approximately 15 minutes.



Accidental depressions in the fabric will smoothen out when raising and lowering the seat a few times.

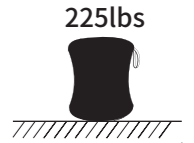


Twist the plastic cover on the bottom of UP300 to "untwist" fabric as needed.

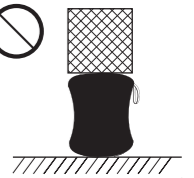
3

# Safety Warning

1. The maximum load bearing capacity of this product is 225lbs.



2. Do Not place any item on the top of the seat.



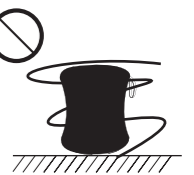
3. Do Not use on uneven surfaces.



4. Avoid sitting on the edge of the seat.



5. Avoid putting anything around the rotating column that can cause tangling or injury.



4