



## SOLPEX SOLAR PATH LIGHT

### PACKAGE INCLUDED:

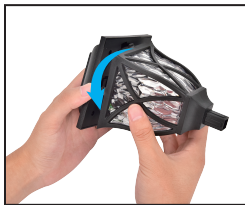


x6  
Lamp

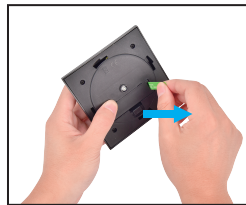


x6  
Part 1

### HOW TO ASSEMBLE LIGHT:



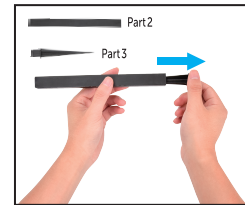
Gently twist the 'roof'



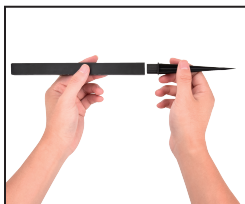
Remove isolator tab



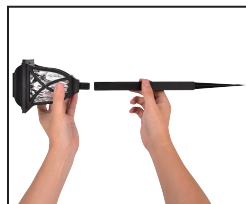
Replace the light



Pull out the spike



Assemble part3



Assemble part2



Complete

### HOW SOLAR LIGHT WORKS:

During the day, the solar panel converts solar power into energy and stores in the rechargeable battery. At night, the light turns on automatically and uses energy stored. The duration of illumination depends on the geographical location, weather conditions and seasonal light availability.



## SOLPEX SOLAR PATH LIGHT

### SELECTING AN IDEAL LOCATION:

1. Select an outdoor location where the solar panel can receive at least 8 hours full and direct sunshine each day.
2. The bright light sources may cause the solar light turning off automatically.
3. SOLPEX Solar lights are ideal for night time lighting in the pathway, garden, lawn, patio etc. You can also place the solar lights outdoor during the day and then place them indoor for lighting.
4. If the soil in your garden is quite solid, we recommended that you should make a hole on the ground before inserting the spike.

### OPERATION INSTRUCTION:

1. For best results, allow light to charge with switch ON position for at least 1 day as it was in OFF position during shipment.
2. Light will turn ON at dusk and turn OFF at dawn.

### BATTERY REPLACEMENT:

1. Turn the switch underneath Solar Panel to OFF.
2. Remove the old battery and recycle or dispose of it properly.
3. Install a new battery of same size.

### CLEANING AND STORAGE TIPS:

It is important that the solar panel is kept free of dirt and debris. A dirty solar panel will not allow the battery to fully charge. This will shorten the life of the battery and cause the light to malfunction. Clean regularly with a dampened cloth or paper towel.

Solar lights can be left outside all year round, even in cold weather. However, if you wish to store your lights indoors, it is best to remove the battery. Any problem, do feel free to contact us through the email below. Thanks.

Contact us:  
 ✉ Solpex@outlook.com  
 Facebook: @gigalumi.fans

Twitter: @Gigalumi\_  
 Instagram: gigalumi\_  
 Pinterest: Gigalumi