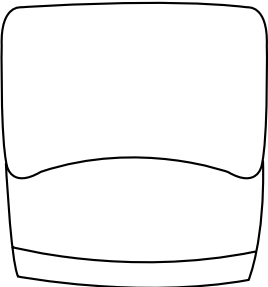
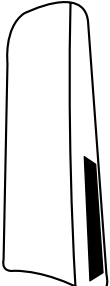

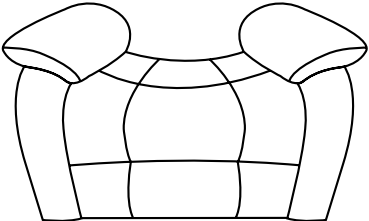


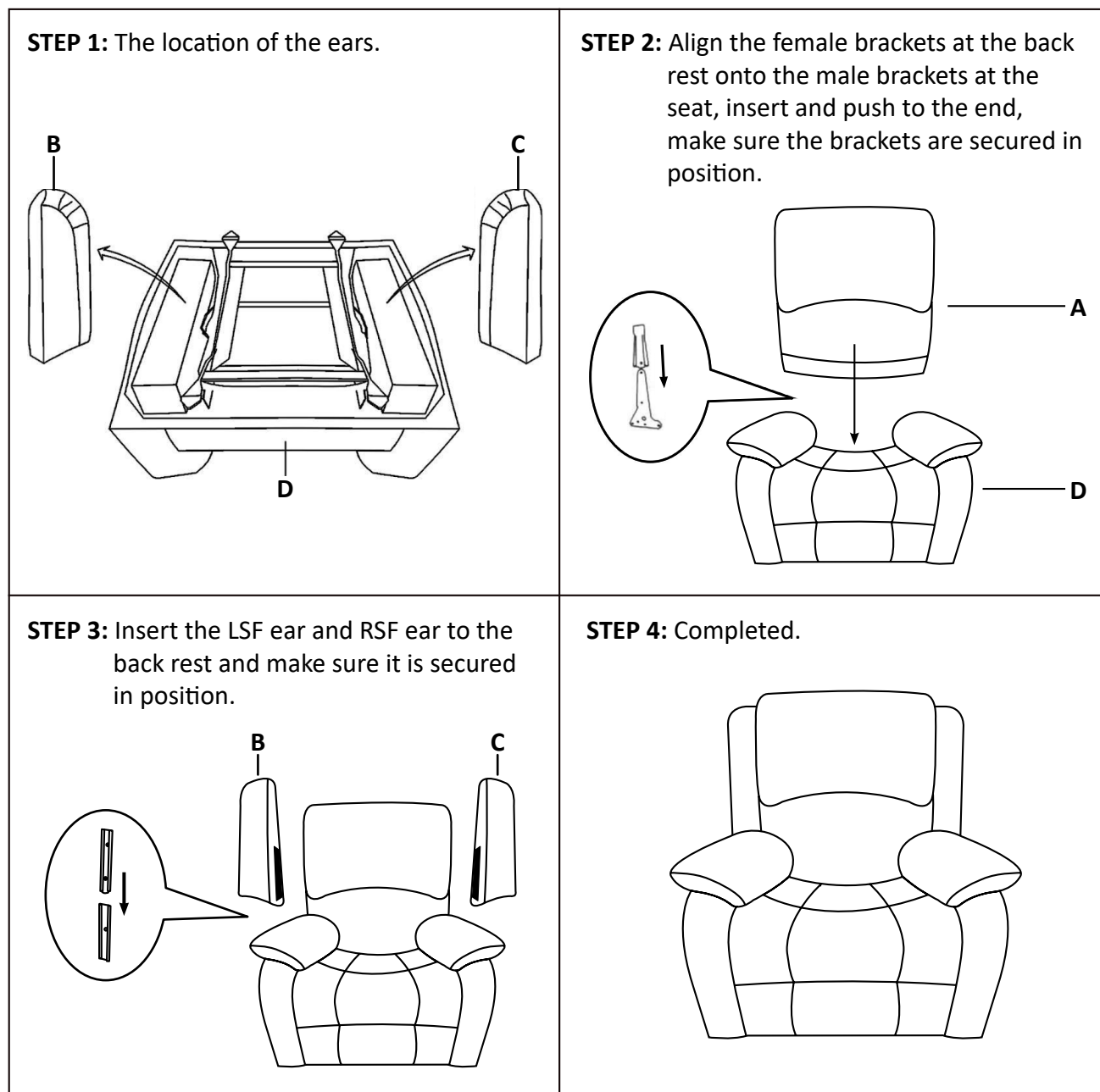
NOTE: Do not use power tools for assembly. Power tools increase the risk of over tightening which lead to splitting or cracking the wood.

COMPONENT LIST

NO.	DRAWING	QTY	DESCRIPTION
A		1	BACK REST
B		1	LSF EAR
C		1	RSF EAR
D		1	SEAT

Please follow the drawings below to assemble the item.

NOTE: LSF ear and RSF ear are stored at the bottom of arm, please take out for assembly.



CARE INSTRUCTION FOR PU FURNITURE

In order to maintain the original appearance of your PU furniture, please follow below simple care procedures:

- Avoid exposing furniture directly to sunlight or heating and air conditioning outlets. Sunlight and / or exposure to heating and air conditioning outlets will fade / damage PU.
- Wipe gently with a damp soft cloth to remove dust, dirt and any grime build up.



For items used on wooden floor, hard surfaces or carpets, it is recommended to install protective pads under all legs and supports to avoid / prevent from damages / scratches discoloration.