

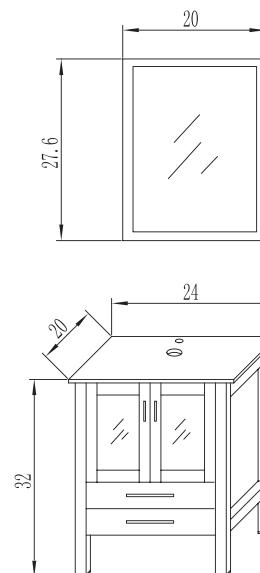


BT-B02

INSTALLATION INSTRUCTIONS

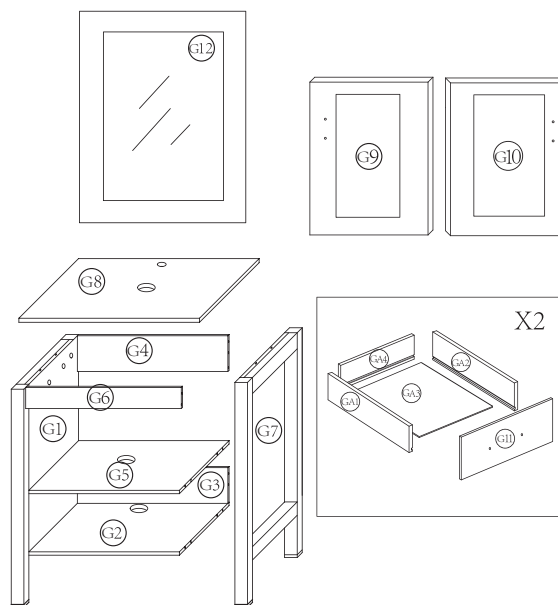
*The vessel set is not included

DIMENSIONS



Unit:inch

ASSEMBLY DIAGRAM

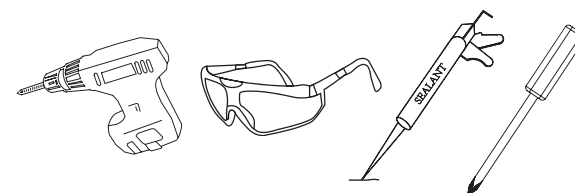


PARTS LIST

PARTS LIST			HARDWARE LIST		
NO.	DESCRIPTION	QTY	NO.	DESCRIPTION	QTY
G1		1	A	CAM LOCK	41
G2		1	B	CAM SCREW	41
G3		1	C	CAM LOCK COVER	41
G4		1	D	WOODEN DOWEL	14
G5		1	E	SCREW	48
G6		1	F	HINGE	4
G7		1	G	HASCREW(φ4x18mm)	8
G8		1	I	HANDLE	2
G9		1	J	HANDLE	2
G10		1	K	HASCREW(φ3.5x35mm)	2
G11		2	L	(φ6x30mm)	2
G12		1	M		4
GA1		2			
GA2		2			
GA3		2			
GA4		2			

CAUTION: Please confirm the parts list before installtion

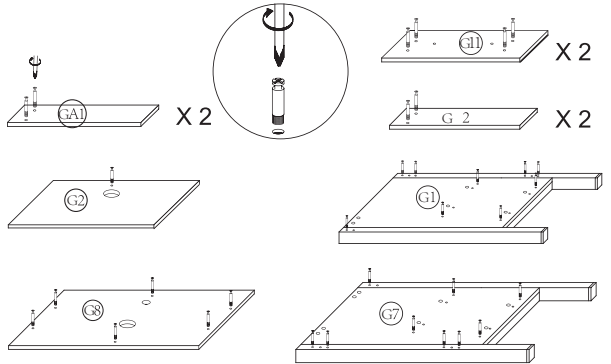
YOU MAY NEED (NOT SUPPLIED)



INSTALLATIONS

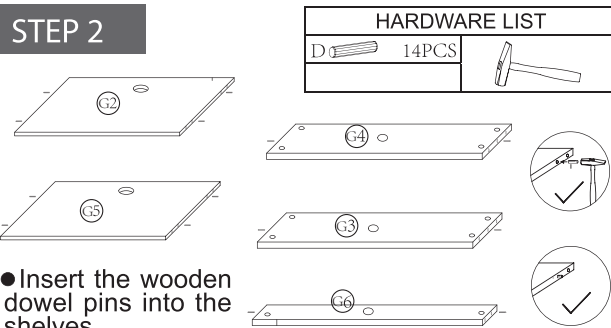
STEP 1

● Insert the Cam Screw into the shelves above.

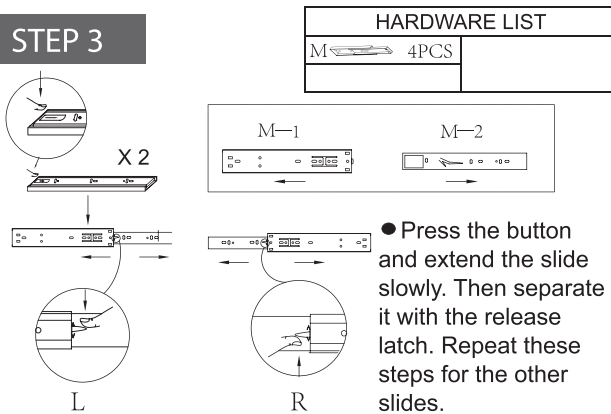


STEP 2

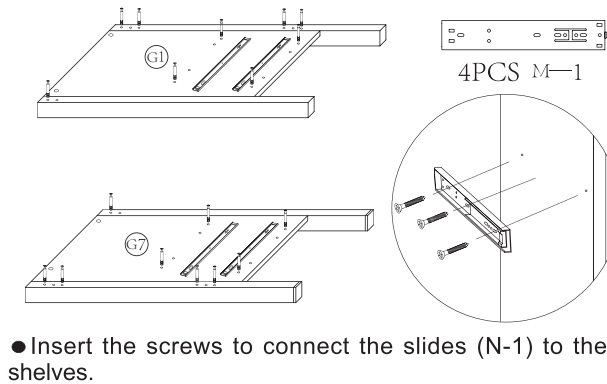
● Insert the wooden dowel pins into the shelves.



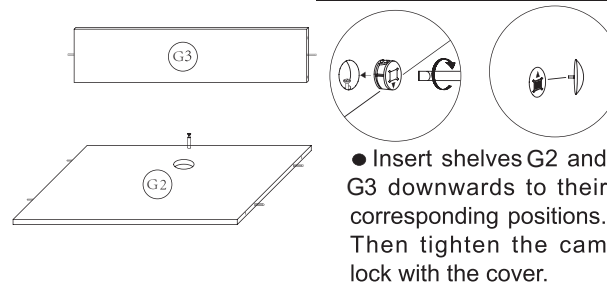
STEP 3



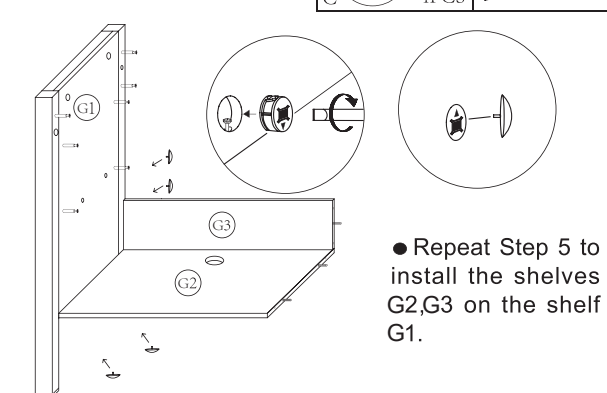
STEP 4



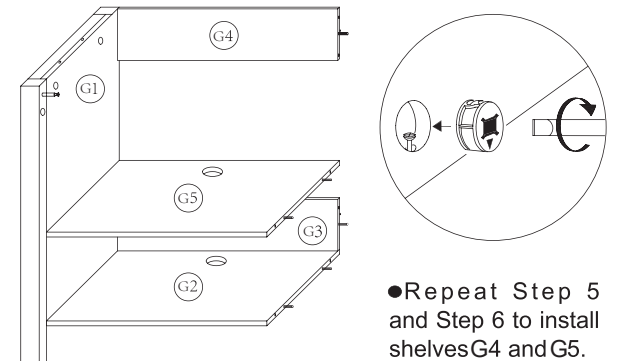
STEP 5



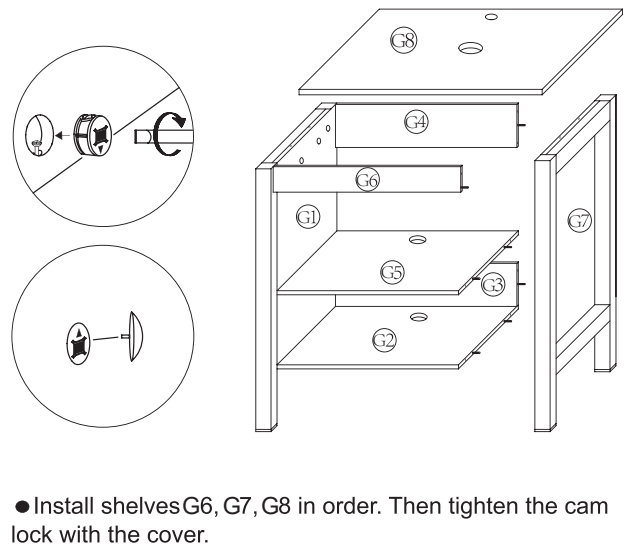
STEP 6





STEP 7

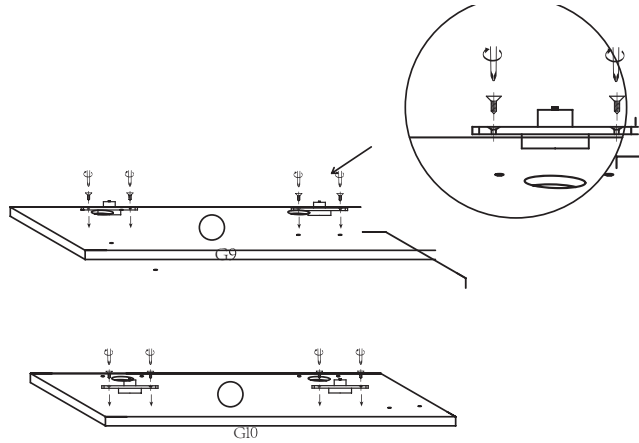


STEP 8






STEP 9

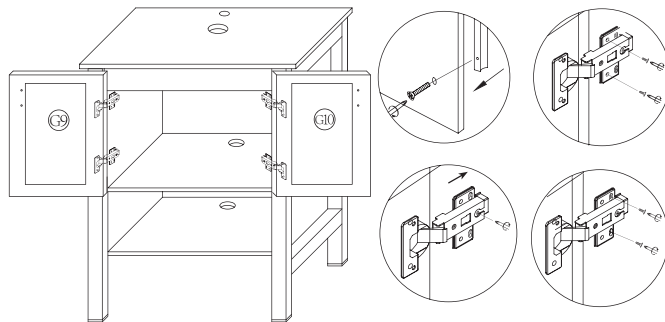
HARDWARE LIST		
E		8PCS
F		4PCS



- Apply the screws to fix the hinges on the shelves G9, G10.

STEP 10





HARDWARE LIST		
E		16PCS
G		4PCS
I		2PCS



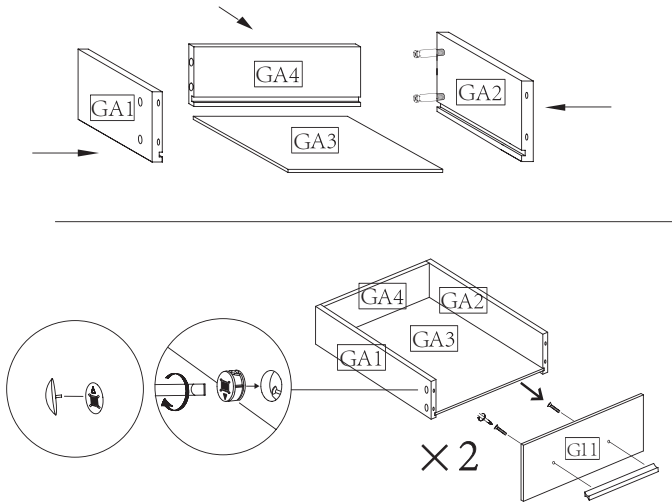
- Use E SCREWS to connect the hinge bracket to the cabinet.

Note: see step 16 to adjust the door's position.

STEP 11

HARDWARE LIST		
A		16PCS
C		16PCS
G		4PCS
I		2PCS

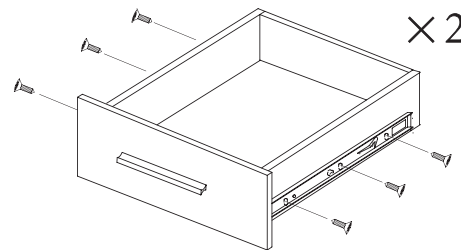
- Install shelves GA3, GA1, GA4, GA2 in order, and then G11.



- Use G SCREWS to fix the handle on the shelf G11. Repeat for the second drawer.

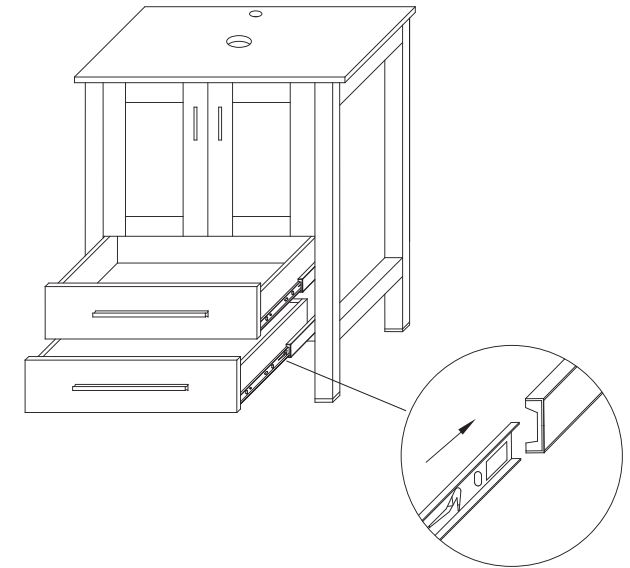
STEP 12

HARDWARE LIST		
E		12PCS



- Insert the screws to connect the slides (M-2) to the drawer side.

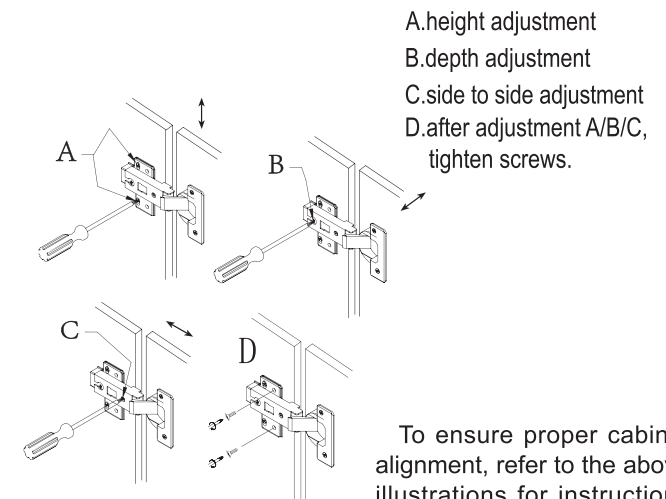
STEP 13



- Connect the drawer to the slide inside the cabinet. Then slide the drawer in and out to ensure smooth operation.

STEP 14


HARDWARE LIST		

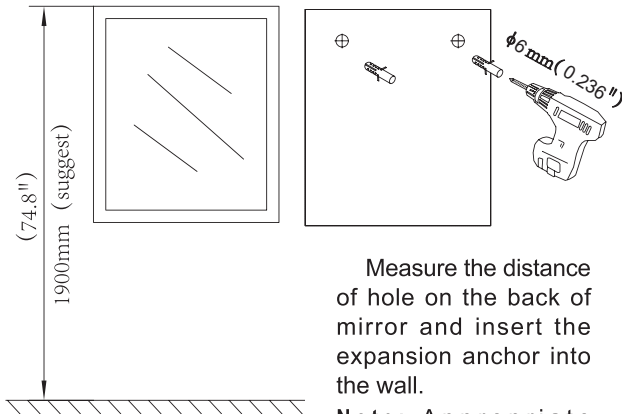


- A. height adjustment
- B. depth adjustment
- C. side to side adjustment
- D. after adjustment A/B/C, tighten screws.

To ensure proper cabinet alignment, refer to the above illustrations for instructions about adjusting the cabinet height, depth and lateral movement.

STEP 15

HARDWARE LIST	
L 	2PCS

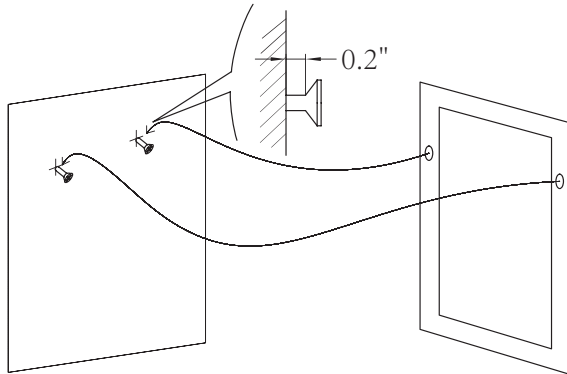


Measure the distance of hole on the back of mirror and insert the expansion anchor into the wall.

Note: Appropriate distance from the top of mirror to the ground is 74.8".

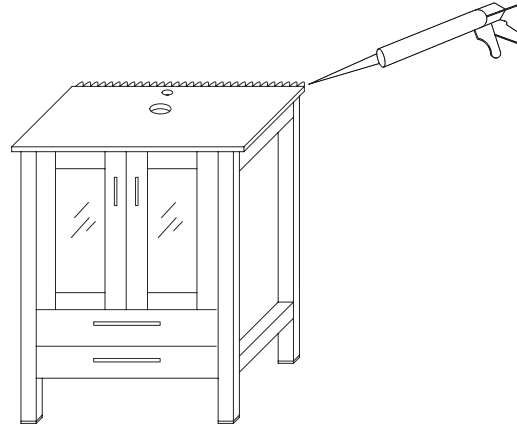
STEP 16

HARDWARE LIST	
K 	2PCS



Insert the expansion into the anchor. Leave about 5mm (0.2") clearance for the mirror. Then connect the mirror.

STEP 17



To help prevent mildew, apply sealant to the space between the wall and the edge of the cabinet.

CARE AND CLEANING

1. Many cleansers contain abrasive and chemical substance which is not suitable for cleaning stainless steel, enamel, plating or plastic products. You may use mild cleansers or soaps to clean the surfaces. Wipe any splashes of cleaner solutions from the surface with a clean soft cloth.
2. Maintain ventilation in the bathroom and separate the dry area from the damp one if conditions permit. Try to open the door and windows of the bathroom to maintain adequate ventilation.
3. This cabinet is built to withstand normal bathroom humidity. For best results, keep this vanity dry and take necessary steps to minimize bathrom humidity by opening windows and doors and using the exhaust fan (if available).
4. To maintain the cabinet door, clean and wipe the door regularly with a soft cloth. Wipe condensation with a dry, soft cloth. Keep away from fires and high temperatures.
5. Please do not sit, lean or step on the basin cabinet.

 eclife

FEEDBACK ★★★★★

Thank you very much for purchasing from us.

We have always been trying to provide the best service and reliable products for every customer.

We sincerely hope you will be satisfied with our products and leave us FIVE STARS and POSITIVE feedback/review in our page.

However, accident may happen sometimes, please contact us to resolve any issue before leaving a negative feedback.

Many thanks and welcome to our shop again!

Contact number: 646-2230128

E-mail: support@ec-export.com

www.ec-export.com

