



Wall Decal Application Instructions

BEFORE YOU BEGIN: Read through entire instructions once before starting

* If walls are freshly painted, wait 3 weeks before applying decals *

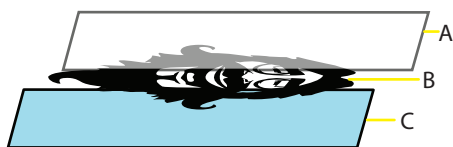
YOU'LL NEED: Decal, masking tape, scissors, washcloth, and a blowdryer.

Your Decal comes in 3 layers:

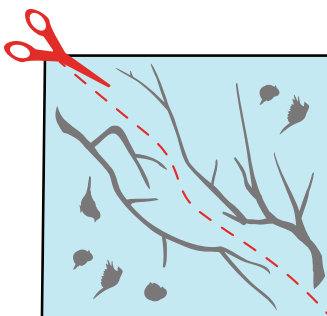
A - Transfer Tape

B - Cut Decal

C - Paper Backing

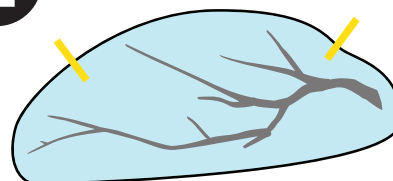


1



● **Cut each piece of your decal out.** Many of our decals come as sheets and each decal needs to be cut out and applied separately.

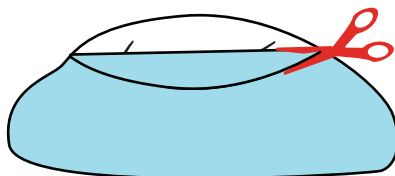
2



● **Tape each decal to your wall** to get a feel for the look and positioning of each decal before starting application.

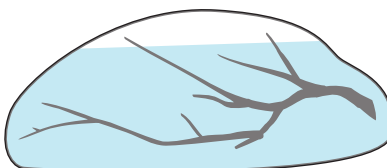
Once applied decals are not repositionable

3



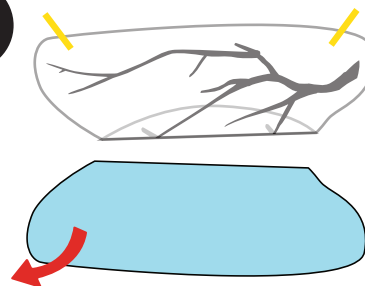
● Take decal off the wall and lay it face down on flat surface. **Peel top of paper backing away then cut and remove it.**

4



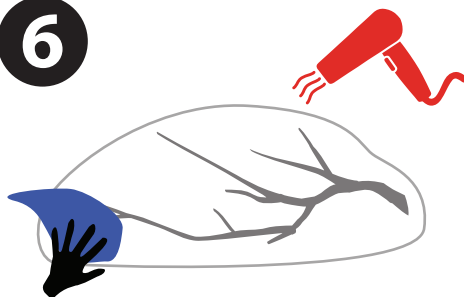
● **Apply top half of decal to wall** gently smoothing it down.

5



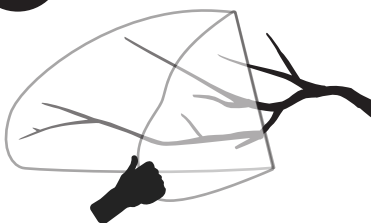
● **Flip decal up and remove remaining wax paper backing.** Gently apply the rest of the decal to the wall working your way from the middle down and out as you go. It helps to have someone hold the unapplied portion of the decal away from the wall as you work your way down.

6



● **Use a blowdryer to heat the decal slightly.** This will soften the decal and allow it to fully conform to the slight texture of a wall. **Use a wet rag and apply pressure to entire decal.** This makes the transfer tape less tacky so it will let go of the decal.

7



● **Slowly peel away transfer tape layer.** Take your time and make sure the decal remains stuck to the wall.

8



● Repeat process for each part of your decal. **Smaller pieces will come without transfer tape** so you can more easily apply them just like a sticker.