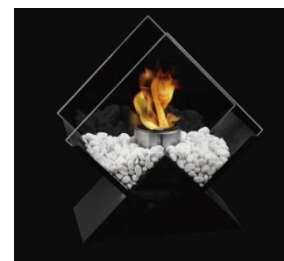


# NOTICE & INSTRUCTIONS

This document is part of the appliance

## Decorative tabletop fireplaces using bioethanol

**DO NOT use without reading the installation and use conditions!**



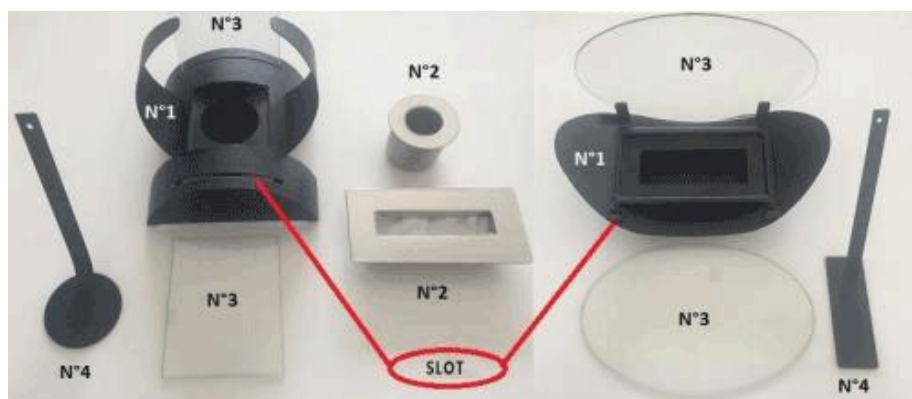
### GENERAL INFORMATION:

- Before using the fireplace, read the user manual carefully and keep it in a safe place.
- The use of the table fireplace is strictly reserved for decorative and domestic use only.
- The autonomy of the appliance is evaluated at + or - 1 hour.
- It is forbidden to use this appliance in caravans, boats and any other type of vehicle.
- It is forbidden to use this appliance in public places.
- This appliance for only decorative, it cannot be used as a heater or to heat food and other ...
- When using a liquid ethanol fireplace, comply with mandatory national and local regulations regarding the installation of these appliances.
- The appliance is intended for personal, non-commercial use.
- The manufacturer and the importer will not be responsible for any failure to follow these instructions.



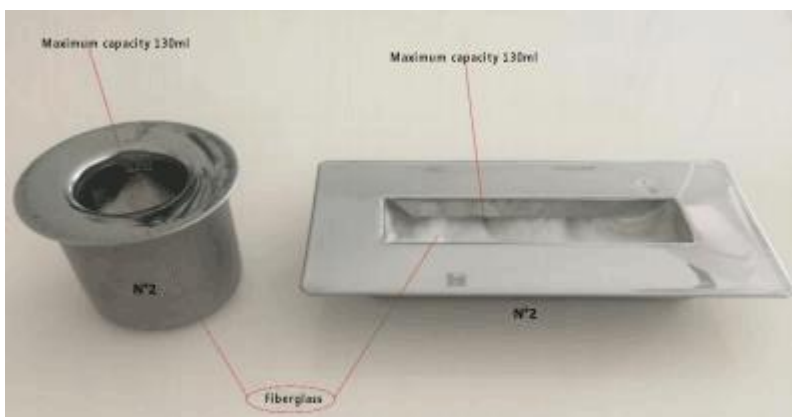
### INSTALLATION INSTRUCTIONS:

- Place the fireplace on a flat horizontal surface capable of supporting a minimum weight of 5 Kg, please be sure the wall/table /floor you are placing this appliance can bear its weight.
- Place the cup(N°2) in the hole of the fireplace base(N°1).
- Fill the cup(N°2) with bioethanol.  
Maximum level indicator for bioethanol: 130 ml
- Place the glass (N°3) in its place which is in slot of the base (N°1).



N°1 Fireplace Base x1  
N°2 Cup x1

N°3 Glass x2 or 4  
N°4 Fire extinguisher x1



**Warning: DO NOT exceed the maximum fill level of the cup to prevent bioethanol from accidentally spilling onto or around other parts of the appliance.**

- Open the fire extinguisher before using.
- Installation only in a location which is protected against cross-aeration/air draft.
- Convection air slots and rear ventilations shall not be covered/obstructed.
- DO NOT put any flammable items on top of the appliance.

## WARNINGS AND SAFETY INSTRUCTIONS:

- The ethanol fireplace is only decorative, it cannot be used as a main source of heat.
- This tabletop fireplace is strictly for indoor use. DO NOT place the appliance in direct draft.
- Its use as described in the instructions is not suitable for any other use.
- Use only in a well adequately ventilated room. The ventilation openings of the room and/or the ventilation systems of the accommodation must not be blocked or impeded. The place must be normally ventilated and sufficiently spacious (over 9m<sup>2</sup> with a standard ceiling height of 2.50m).
- The table fireplace must not be used permanently, but intermittently, it can last burning about 1 hour with charming flame when the fuel is sufficient; it is necessary to keep the cooling period.
- Never leave the tabletop fireplace without adult supervision, whether in use, turned off or still hot, also with the cup filled and the fireplace turned off.
- Keep away from fire during use.
- Keep away from children and animals.
- Keep the table fireplace away from all flammable materials (curtains, tablecloths, artificial flowers, etc.). The recommended minimum distance from any flammable object is 1 meter.
- DO NOT ignite or touch the appliance if it is in a hot state. Some parts of the fireplace especially the outer surfaces are getting hot during operation.
- The structure of the appliance cannot be changed.
- **Use only liquid ethanol fuel intended for this type of fireplace which may be on sale in specialized DIY stores or Amazon.**
- It is forbidden to use any other fuel or to add an additive(essential oils, perfumes, etc.) The minimum purity of Ethanol must be greater than 95%.
- The product is only suitable for the combustion of bioethanol, it is forbidden to burn other materials.
- Handle and use liquid ethanol with care; slowly pour the liquid into the reservoir to avoid splashing.
- Comply with the conditions in force for the storage of fuel (the container must be tightly closed, out of the reach of children and in a safe place).
- DO NOT move the appliance while it is on work.
- The extinguisher provided (N°4) must always be available near the table fireplace.
- Protective glasses and metal brackets are designed to withstand the temperature caused during combustion, but they remain very hot during use.
- Only spare parts authorized by the manufacturer can be used.
- DO NOT remove the fiberglass which is inside the cup.
- Any overspill shall be removed before lighting the appliance. Need to check the secondary containment chamber regularly for fuel overspill. If excess fuels detected therein the cup shall be emptied (e.g. before each refilling of the fuel cup).

	Do not put any objects onto the fireplaces
	Never fan the fire.
	Do not touch the flames.
	Do not position the fireplace near combustible items.
	Keep suitable extinguishing agent ready.

	Do not add ethanol onto an active fire.
	Do not add ethanol while the product is still hot.
	Please read the operating instruction carefully before using the device. As long as you have the product, keep it so you can consult it later. Together with warranties, invoices and, if possible, cartons and packaging of products.

## **PRECAUTIONS AND FLAME WITH THE FIREPLACE:**

- When installing, ensure that the fireplace is not placed on heat-sensitive or flammable floors, and that no heat build-up is retained by ceilings and walls. For these reasons, the fireplace can only be used in rooms of appropriate dimensions, ie equivalent to a floor area of 9m<sup>2</sup> and a ceiling height of at least 2.50m.
- Make sure to keep a minimum distance of 1 meter from all flammable materials or objects.
- Be sure to keep a safe distance around the appliance.
- Fill the cup sufficiently with bioethanol(N°2).
- DO NOT smoke or expose the table fireplace near a heat source (eg candle, etc.), especially when filling with fuel as during the cooling period (flammable vapors).
- Light the fire from the side with a gas lighter or long matches, never light the fire from above!
- Replace the glass (N°3) on the base of the fireplace(N°1).
- Keep the extinguisher(N°4) always near the fireplace.

## **CARE AND MAINTENANCE:**

### **Beware of the risk of burns caused by hot surfaces!**

- Before any maintenance, wait for the complete cooling of the appliance, fire extinguished.
- Make sure that there is no liquid ethanol left in the fireplace and that it has not been accidentally spilled on or around the components of the appliance.
- DO NOT clean the appliance using aggressive abrasives, strippers or solvents. To clean the surfaces of the appliance, the glass and its parts, use a soft, slightly damp cloth and, if necessary, a little mild detergent. To clean the cup, use hot water and a little detergent.
- After cleaning, check that all the elements are completely dry.
- Note that it is important to change the fiber of the cup after 200 hours of use, on sale in specialized stores or by mail order.

## **ADD LIQUID ETHANOL:**

- **Always fill the cup cold !!!**

It is prohibited to add liquid ethanol to a lighted fire or during its cooling period; in such cases, wait for complete cooling.

- Let the fireplace cool for 20 minutes with the hearth closed.
- Wait for the compulsory cooling phase to remove the glass.
- DO NOT remove the fiberglass from the cup.
- DO NOT remove the cup from the fireplace.
- Carefully refill the cup so as not to add fuel.
- DO NOT exceed the maximum level indicator 130ml of the cup when you add liquid ethanol.
- Clean any splashes with a paper towel or rag to absorb the excess.
- Wipe the extinguisher to remove all traces of ethanol with a paper towel or with a rag
- DO NOT throw away this paper towel or cloth, but allow to air dry away from fire, children and pets.

## **EXTINGUISHING THE FIREPLACE:**

### **It is forbidden to extinguish the fire with water!!!**

- It is best to burn the fire until the liquid ethanol is completely used up.
- Cover the cup(N°2) with the extinguisher (N°4) provided for this purpose, in order to smother the flame until the fire is completely extinguished.
- Thoroughly wipe the extinguisher to remove all traces of ethanol.
- After having taken care to unfold it, leave the extinguisher on the cup as a cover, to prevent direct access to the fuel in the cup or to limit its evaporation outside the filling, ignition and operation phases.
- Wait for the fireplace to cool (allow 20 minutes).

## **SAFETY INSTRUCTIONS SPECIFIC TO THE APPLIANCE:**

- Compliance with national standards and local provisions must be observed and enforced for the installation and use of this appliance.
- If the appliance is defective, DO NOT try to repair it personally. In case of damage, contact a qualified technician.

## RISKS

### RISK OF ACCIDENTS

- Never let the fireplace burn without adult supervision.
- This appliance must not be used by people with physical or mental sensory difficulties or by children.
- Children and pets should be supervised to keep them away from the appliance and out of contact with ethanol.
- Liquid ethanol is not intended for drinking. If swallowed, seek medical advice immediately, showing the product label. Follow the instructions on the ethanol container.
  - When in use, the appliance and its parts become hot even after the fire is extinguished; they will stay warm for a while.
- Above all, DO NOT touch, wait until the appliance is completely cold, also to fill it again.

### RISKS OF ASPHYXIA

- CAUTION- This appliance gives off combustion vapors. Use the fireplace in a normally ventilated room. The ventilation openings of the room and / or the ventilation systems of the accommodation must not be blocked or impeded. The place must be normally ventilated and sufficiently spacious (more than 9m<sup>2</sup> with a standard ceiling height of 2.50m).
- Keep the packaging out of the reach of children. Among other things, there is a danger of suffocation.

### FIRE HAZARDS

- It is forbidden to place objects on or in the fireplace.
- Covering or blocking the openings of the fireplace while using the appliance is prohibited.
- It is forbidden to move or tilt the table fireplace when it is on work or still hot.
- It is forbidden to use the appliance above a heat source.
- It is forbidden to pour ethanol on a lighted fire or in the fireplace if it is still hot. After filling the liquid ethanol cup, follow the instructions described in the "PRECAUTIONS AND FLAME WITH THE FIREPLACE" chapter.
- It is forbidden to ventilate the fire (eg using a hair dryer).
- It is forbidden to extinguish the fire with water!

Follow the procedure described in the chapter "Extinguishing the fireplace".

- Store liquid ethanol in a tightly closed and marked container.
- Ethanol is an extremely flammable product, its storage location should be cool, out of direct sunlight and away from strong sources of heat or open flames. It is not recommended to keep more than 5 liters in your home.
- If ethanol spills, wipe up immediately with water to avoid any risk of fire. If the ethanol has spilled on or near the fireplace, check that it has not reached the base of the appliance or the extinguisher. If so, wipe off with a paper towel or rag, then wipe the affected area with water.
  - Despite all safety precautions, in case of fire, alcohol resistant foam or carbon dioxide can be used as an extinguishing medium.
  - It is mandatory to keep a suitable extinguisher near the fire.
  - Smoking is prohibited when filling the fireplace.

### RISK OF BURNS

- During operation, the appliance and its components become hot and remain hot for some time after the fire has been extinguished.
- Touching the appliance is only allowed after it has cooled completely.

## STORAGE:

**Hot parts of the appliance create a fire hazard.**

**Store after the appliance has completely cooled down.**

- Before storing the appliance, make sure that the appliance and its accessories are cold and that the ethanol liquid is fully used.
- The appliance must be stored in a clean and dry place.
- Since ethanol is extremely flammable, the storage area should be cool, out of direct sunlight and away from strong sources of heat or open flames. It is not recommended to store more than 5 liters of ethanol in your home.

## REPAIR:

Problem	Probable cause and solution
bioethanol cannot be ignited	If the liquid ethanol in the fireplace cannot be ignited after several attempts, it is possible that a significant amount of alcohol has already been evaporated thus reducing its flammability. In this case, it is best to wait 20 minutes, throw away the ethanol in the fireplace in a suitable location and refill it. To get rid of it, DO NOT use the waste water drains (toilet, sink and the like); instead, dispose of it at a hazardous materials center or similar.
In case of fire	In case of fire, despite all safety measures, it is possible to use alcohol resistant foam or carbon dioxide as a means extinction. It is necessary to keep a suitable extinguisher near the fire.