

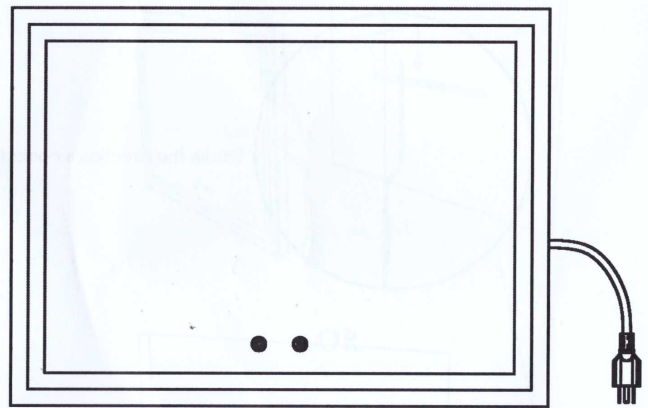
## Safety Instructions

1. Please read the instructions carefully before use.
2. Handle with care during installation of the product.
3. Voltage applied should match the rated voltage of this appliance.
4. Always try to keep mirror dry to have a better sensitivity of the buttons.
5. Do not expose the product to direct rinsing.
6. It is advisable that you employ plug cover for your power cord or power socket if your bathroom is susceptible to water vapour accumulation.
7. Disconnect the product from power supply before cleaning.
8. After cleaning, ensure that the glass is completely dry before you turn it on for safety concerns.
9. Disconnect the product from the power supply and store the product if you don't need to use it for a long time. Keep it away from direct sunlight.
10. Children can operate this product only under the supervision of adults.
11. Keep it away from fire or heating source.
12. Stop using it immediately if light malfunctions or power cord is broken.
13. For daily maintenance, apply specialized mirror cleaner to clean the mirror.

## Specifications

<b>Overall Dimensions (L x W x H)</b>	31 1/2" x 23 5/8" x 1 5/16" (80 x 60 x 3.3 cm)
<b>Voltage</b>	110 V
<b>Power</b>	20 -36 W
<b>Each LED Bead Luminous Flux</b>	22 to 24 Lm

## Package Contents



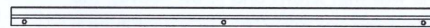
Bathroom Mirror x 1



Screw x 3



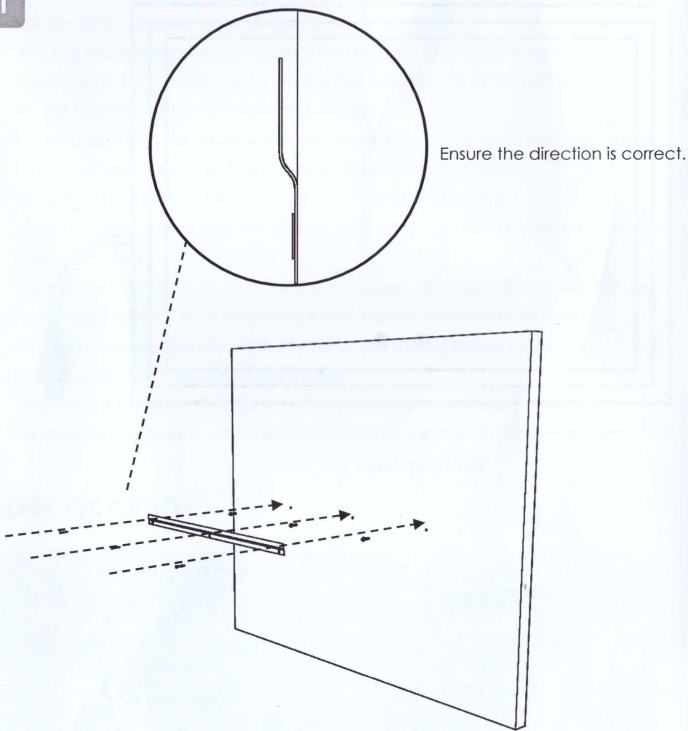
Screw Sleeve x 3



Hanging Bracket x 1

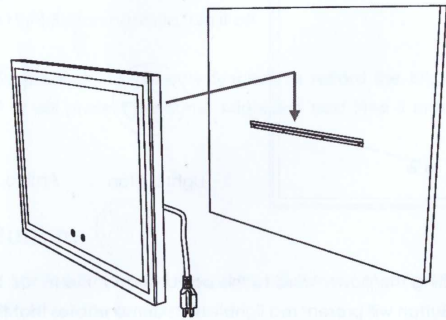
## Installation Instructions

1

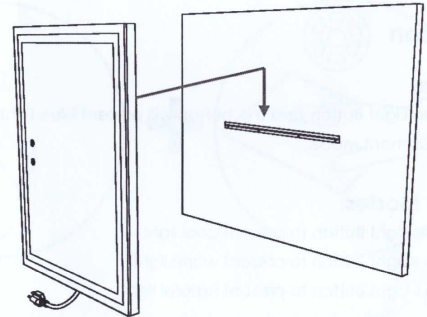


Install the hanging bracket on the wall with screws and screw sleeves. The hanging bracket is for hanging the bathroom mirror. Please ensure there is enough space for hanging the bathroom mirror.

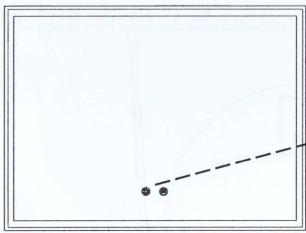
2



OR



Hang the bathroom mirror horizontally or vertically on the bracket as needed.



Light Button



Anti-fog Button

After connecting the power cord to the power supply, the mode button and the Anti-fog Button will present red light, which demonstrates that the light has been activated.

### Light Button



#### Turning On:

- Touch the Light Button and the button will present blue light to enter into light adjustment mode.

#### Changing Modes:

- Touch the Light Button to present cool light.
- Touch the Light Button to present warm light.
- Touch the Light Button to present natural light.

#### Adjusting Brightness:

- Long press the Light Button in any of these 3 modes to adjust to your desired brightness.
- The lighting effects will become dimmed first and then become brighter.

#### Turning Off:

- Touch the Light Button again to turn it off.

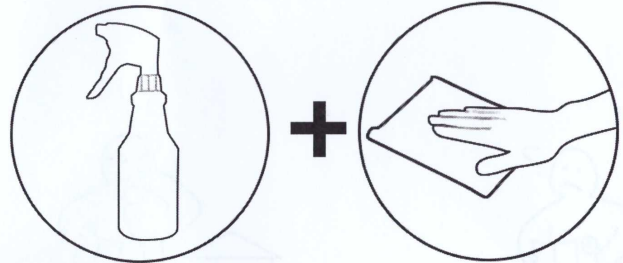
Please note the product has memory function to record the brightness of the lighting modes. It will present the same brightness next time it enters into these modes.

### Anti-fog Button:



- Touch the Anti-fog Button and the button will present blue light to defog.
- Touch again to exit the anti-fog mode.

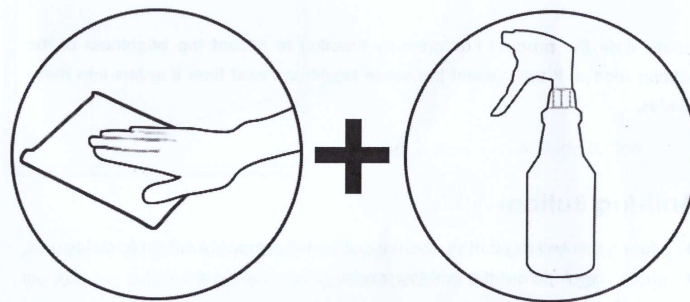
### Daily Maintenance



Clean the surface of the product with a piece of cloth and specialized mirror cleaner at regular intervals.

For more information about our products, please visit:  
[www.aquaterior.com](http://www.aquaterior.com)

## Daily Maintenance



Clean the surface of the product with a piece of cloth and non-abrasive specialized cleaner at regular intervals.



For more information about our products, please visit:  
[www.aquateer.com](http://www.aquateer.com)