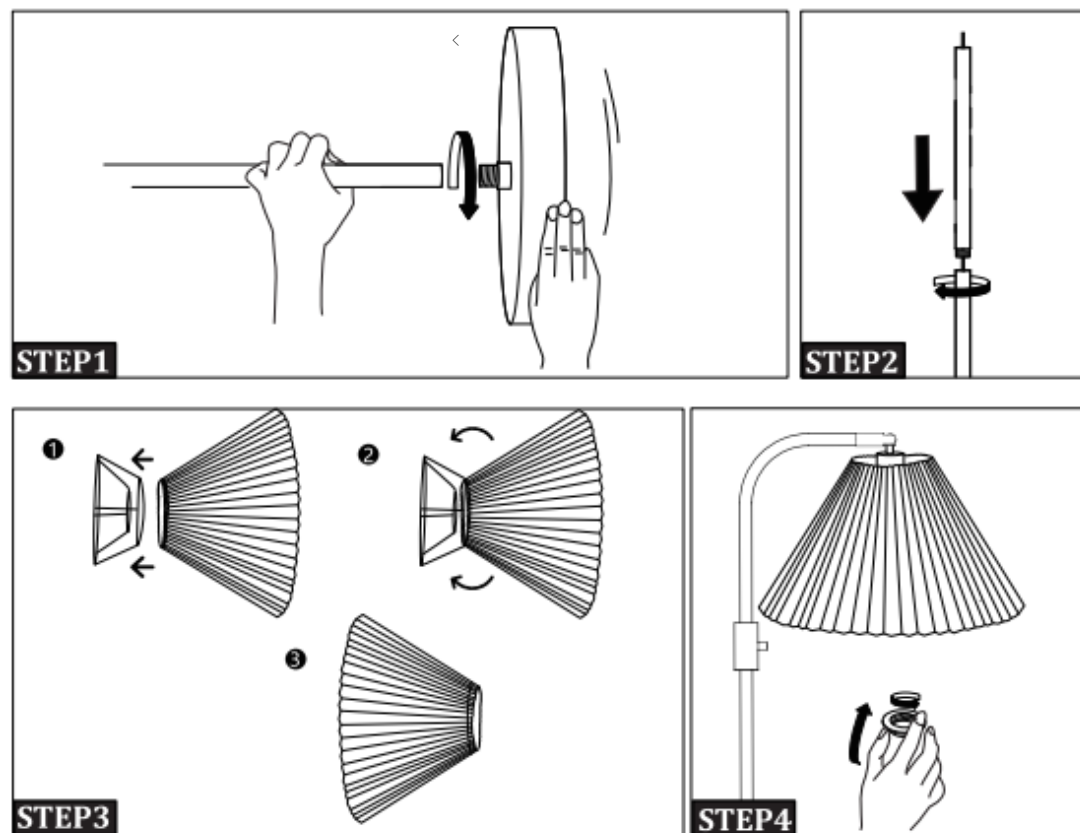


A:Lampshade B:Shade Frames C:Socket Ring D:Lamp Pole E:Lamp Base



INSTALLATION GUIDE

First of all, make sure that all parts are present.

STEP1 Screw D and E tight by spinning E.

STEP2 Install each part of D.

STEP3 Fit the B part in the A part, attach one edge to another:

Installation complete, reverse cloth cover

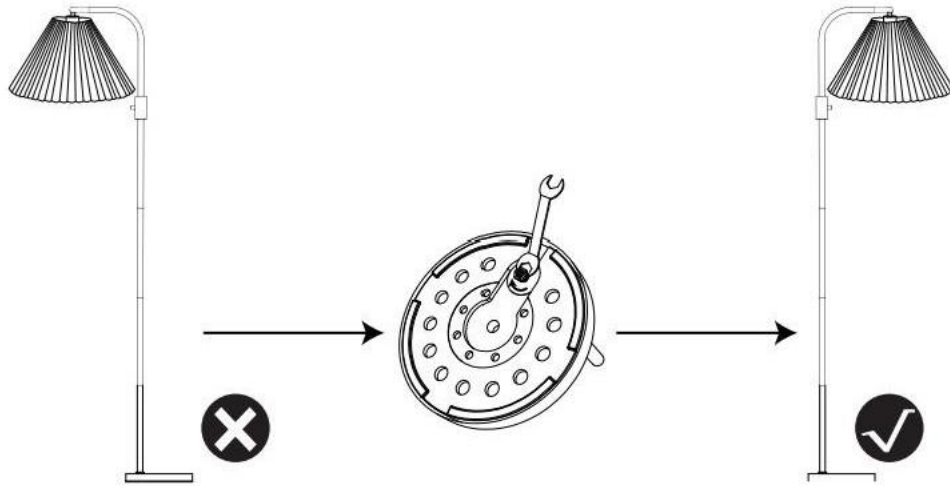
STEP4 Install C and bulb.

USING TIPS

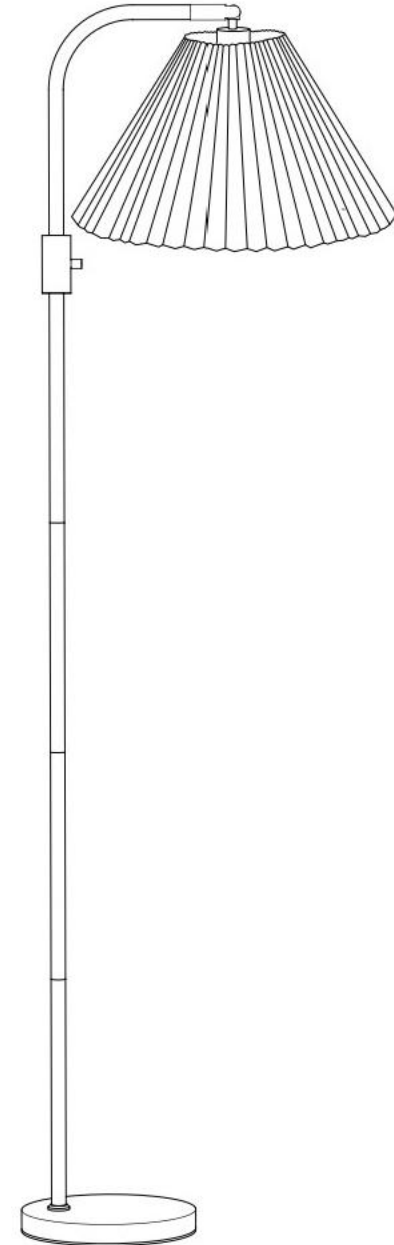
Plug in the power first, then turn ON/OFF by rotating the switch knob and adjusting the brightness.

TROUBLE SHOOTING

- 1.If your lamp does not work,please make sure that plug is firmly in and then turn the rotary switch.
- 2.Lampshade Unstable→Tighten the C on the lampholder
- 3.The lamp is shaking or lean Recheck the STEP2 &STEP3 whether have been tighten



USER GUIDE



This device complies with Part 15 of the FCC Rules.Operation is subject to the following two conditions:(1)this device may not cause harmful interference,and (2)this device must accept any interference received, including interference that may cause undesired operation.