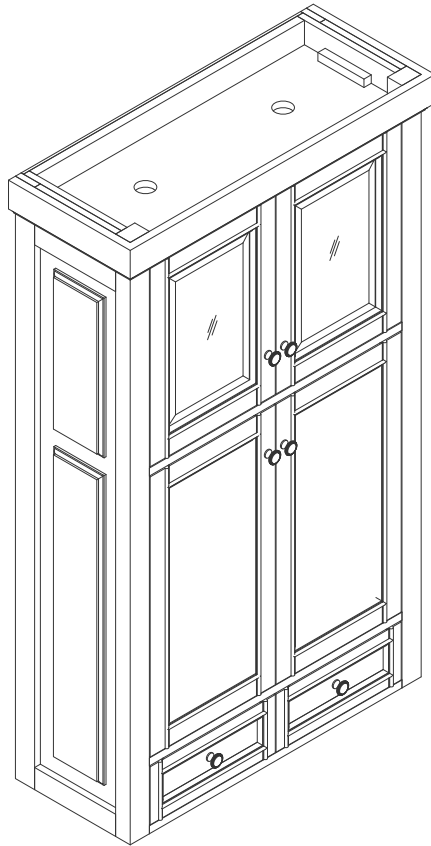


# 30" DOUBLE TOWER HUTCH

---



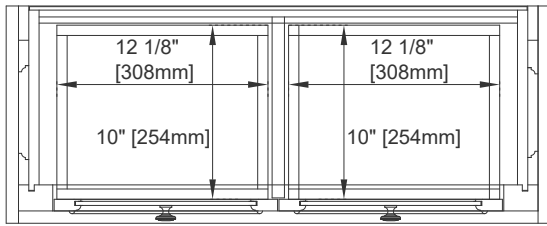
## Features and Materials

Solids: Yellow Poplar  
Panels: Plywood & MDF  
Installation Type: Floor Standing  
Number of Doors: Four  
Number of Drawers: Two  
Number of Tip Outs: 0  
LED Light: YES  
Assembly Required: YES  
USB/Power Component: YES (ETL5011080)  
Drawer Box Material and Construction: 15mm Poplar/English Dovetail Joinery  
Hardware Material and Finish: Zinc Alloy in Satin Nickel Color  
Full Extension, Soft Close Glides  
European Soft Close Hinges  
Aluminum Laminate Drawer Liners

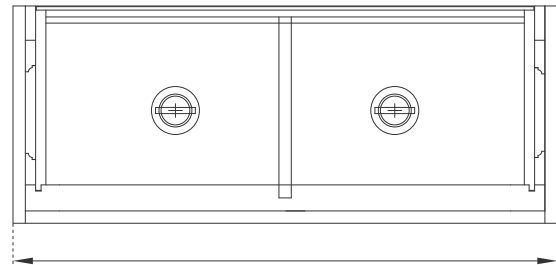
## Dimension

Width: 31-1/4"  
Depth: 12-1/2"  
Height: 53-1/2"

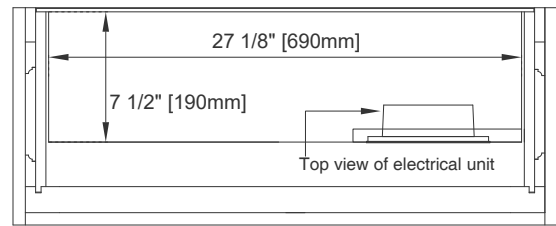
# 30" DOUBLE TOWER HUTCH



Top View

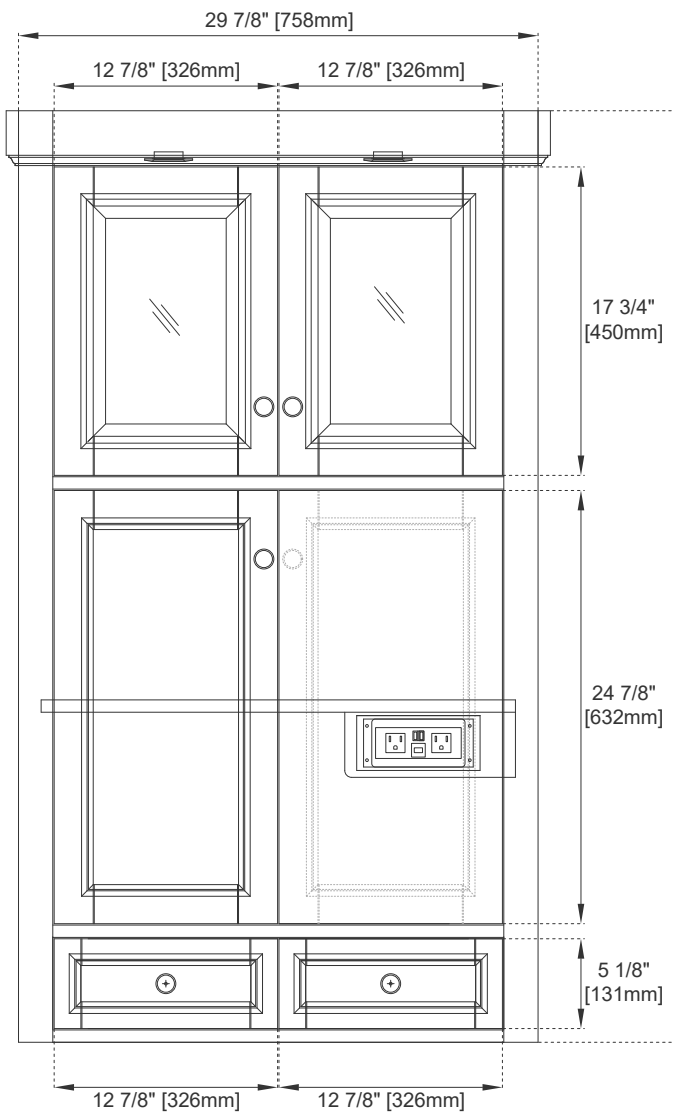


31 1/4" [794mm]

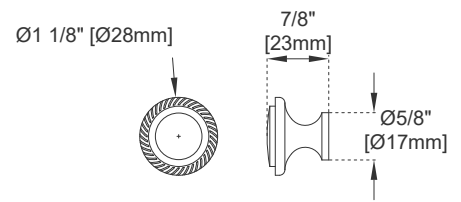


Top view of electrical unit

Top View



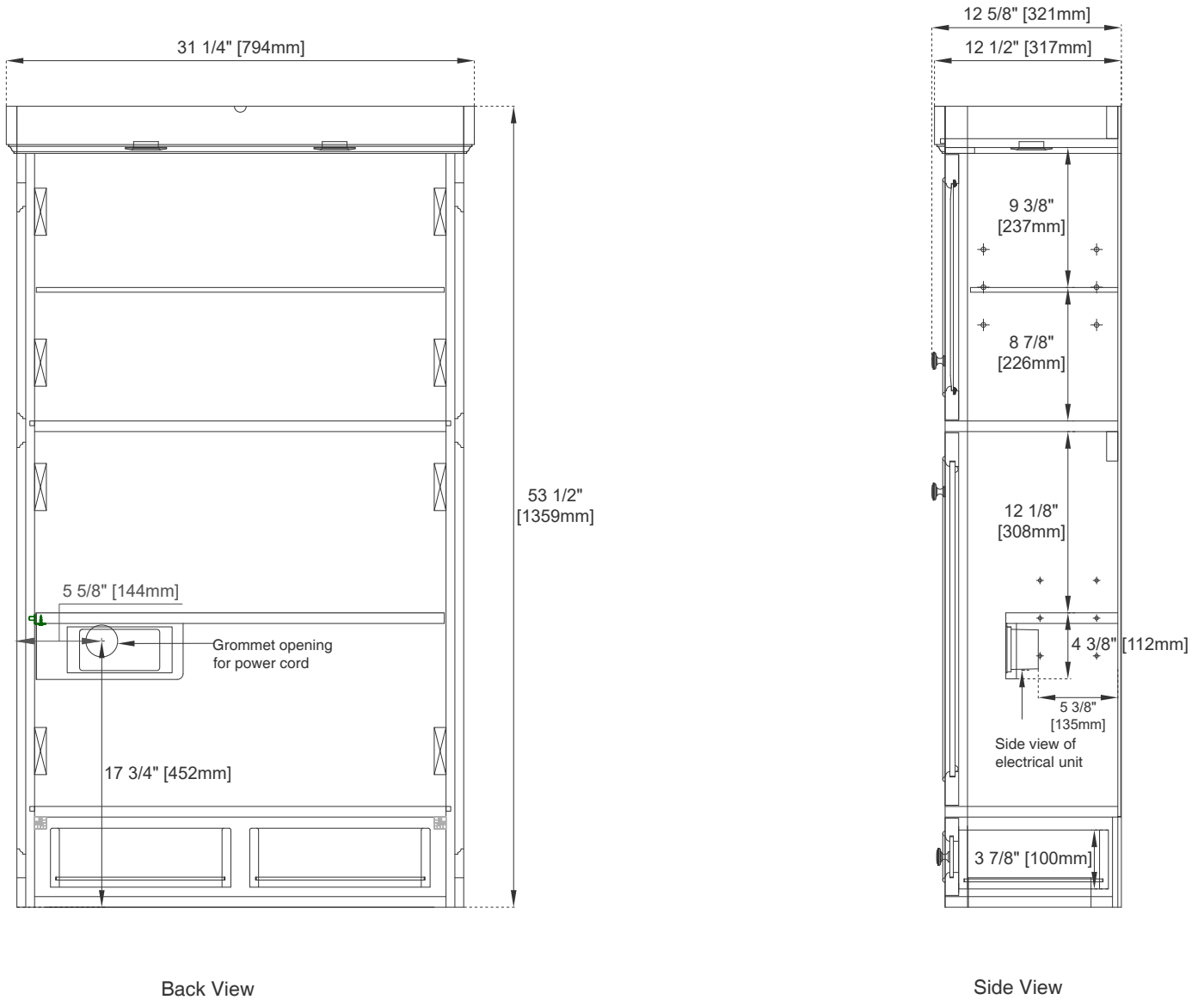
Front View



Knob

All dimensions are nominal

# 30" DOUBLE TOWER HUTCH



All dimensions are nominal