



20 : 00

estimated assembly +
installation time



2 or more

people required

Ok, let's
get started!



- Put on mood music!
- To prevent damage to product, use the clean side of package carton or rug as working surface.
- In the event of missing or damaged parts, delivery problems etc., please reach out to our team.
We will be happy to fix the problem!

care guide

- Clean regularly with a soft and dry cloth.
- To protect finish, avoid use of abrasive cleaners.
- Wipe up spills immediately. Please!

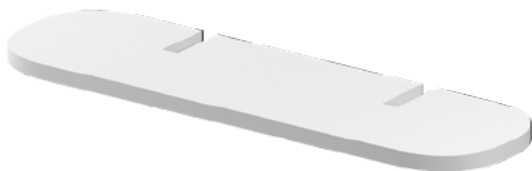
ⓘ While assembling the product, tighten the bolts up to 50%. Once all parts are in place, only then fully tighten the bolts.



product parts



(A)
Shelf
x2



(B)
Frame
x2

what's included



(C) - Screw
x2



(D) - Wall Plug
x2

assembly instructions

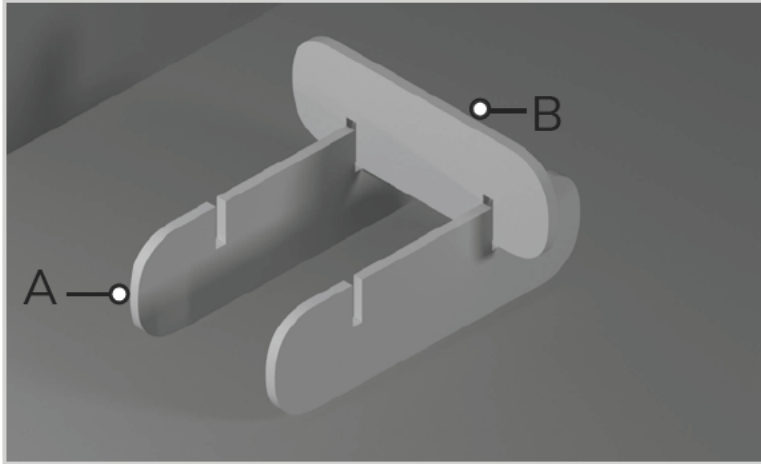
Friendly Tip: Take a deep breath going in. This may be a tricky part, but nothing too overwhelming. Just follow these steps to the T and the outcome will be worth it!



- ⓘ While assembling the product, tighten the bolts up to 50%. Once all parts are in place, only then fully tighten the bolts.

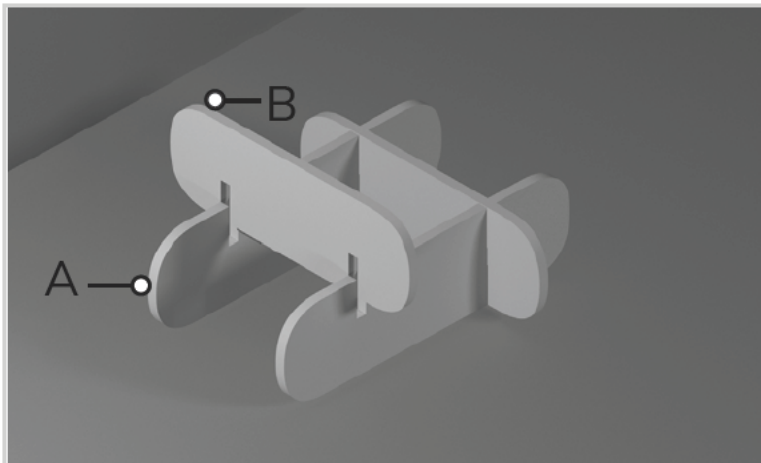
step 1:

Start by placing both shelves (A) parallel to each other on a flat surface (cut-out slits face upwards). Now place the frame (B) vertically over both the shelves (cut-out slits face downwards). Adjust if needed. Taking the image below as reference, interlock them together.



step 2:

Repeat step 1 with the other shelf (A) and fix both shelves with the frames securely.



installation
instructions



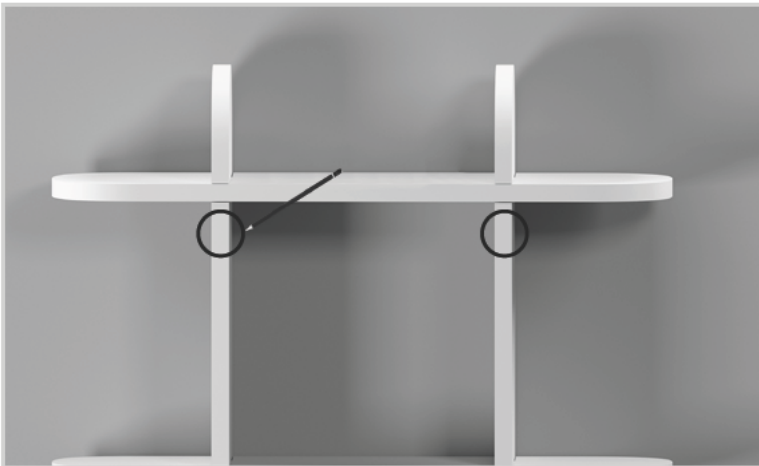
step 1:

Place the shelf on the wall and put a spirit level on it to check alignment. Adjust if needed.



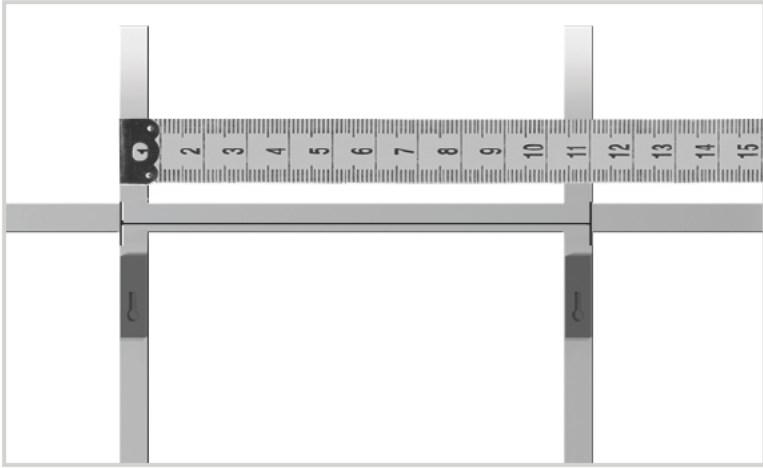
step 2:

Once the shelf is straight aligned to the wall, make a line running from its one end to the other using a pencil.



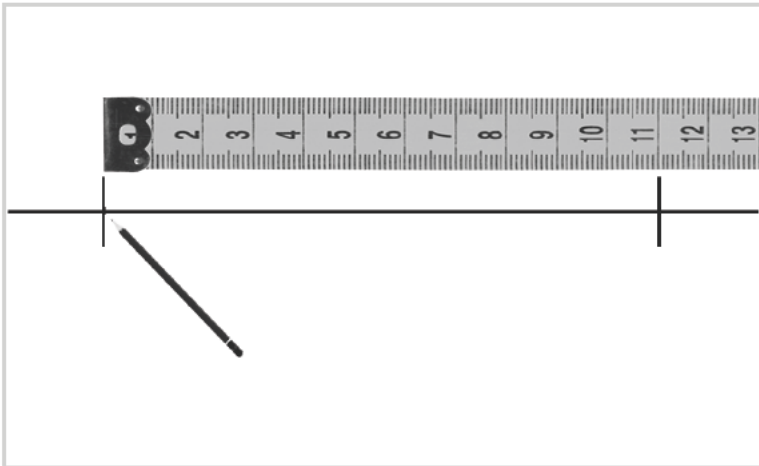
step 3:

Next, measure the distance between the two keyholes using a measuring tool.



step 4:

Place the measuring tool against the line marked on the wall and make two marks on it where you want to mount the shelf.



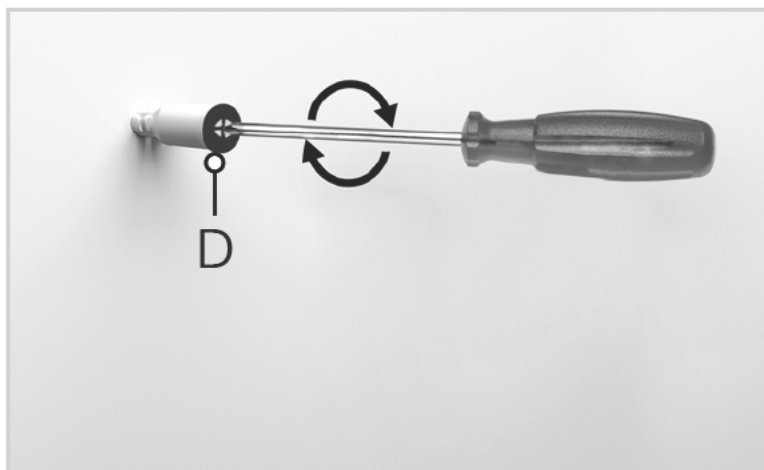
step 5:

Drill holes approx. 10 mm at the points you just marked.



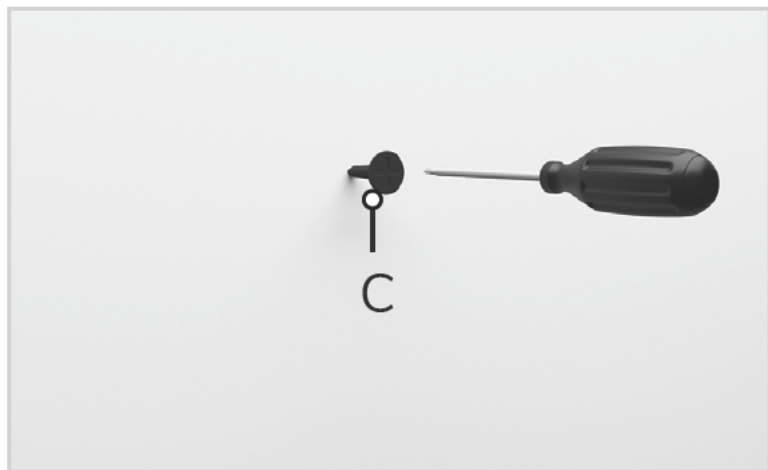
step 6:

Insert wall plugs (D) with the help of a screwdriver.



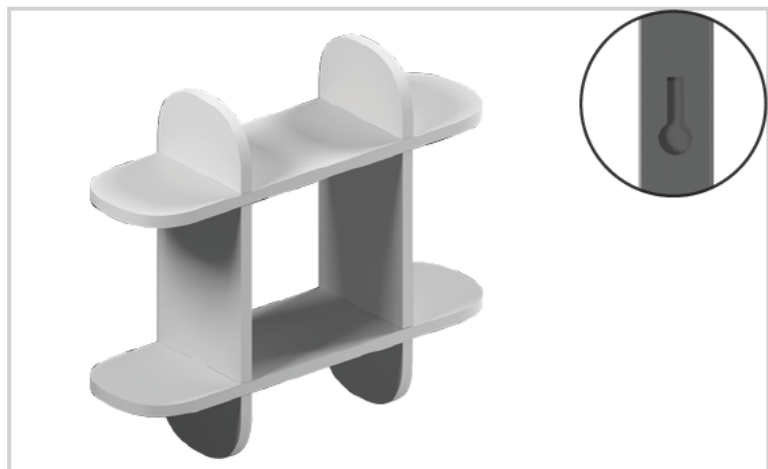
step 7:

Then, insert screws (C) into the wall plugs using a screwdriver.



step 8:

Place the keyhole-slots over the screws.





Voila! Your shelf is now installed and secure!