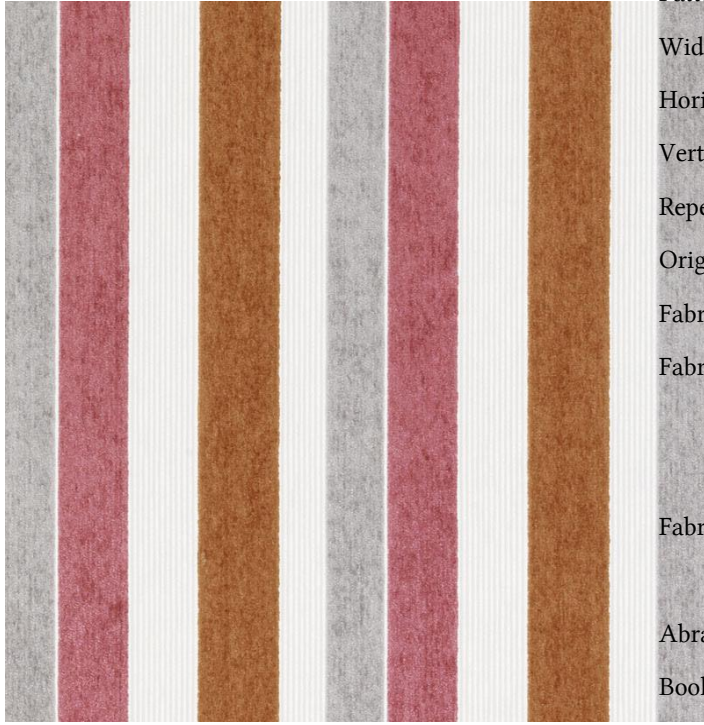




Fabric Detail for:15670 | 35-tangerine



Pattern:	15670 35-tangerine
Width:	54"
Horizontal Repeat:	.000"
Vertical Repeat:	6.250"
Repeat Direction:	Railroaded
Origin:	China
Fabric Grade:	03
Fabric Contents:	58% Rayon 21% Cotton 21% Polyester
Fabric Performance:	NFPA 260 UFAC - Class 1
Abrasion:	30,000 Double Rubs
Book Name:	DAHLIA-TANGERINE