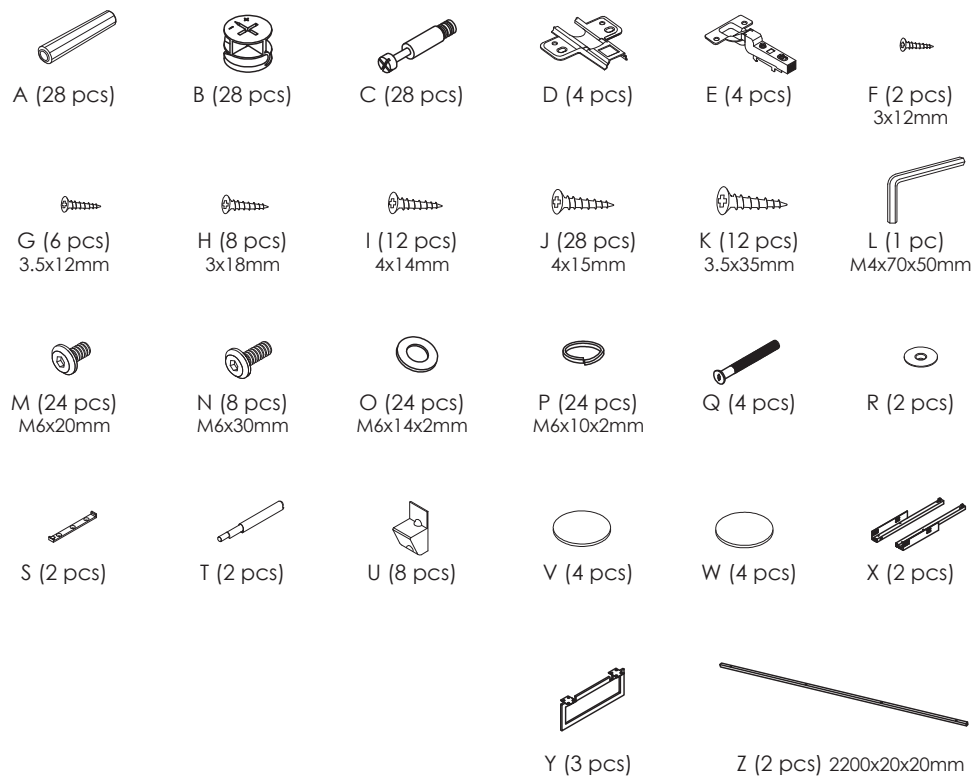
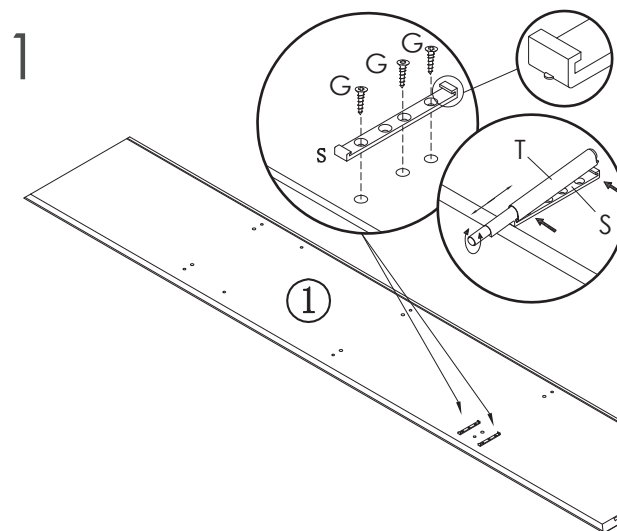
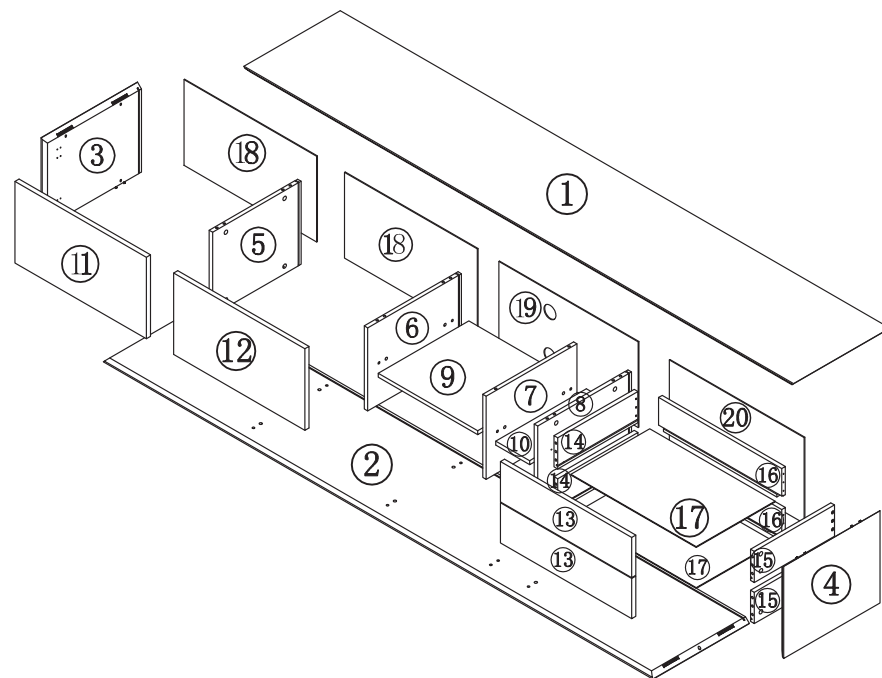


Assembly Instructions

Media Stand Large (pg 1 of 6)



PLEASE NOTE: Check that you have received all components and hardware before assembling. If you are missing any parts, contact your retailer



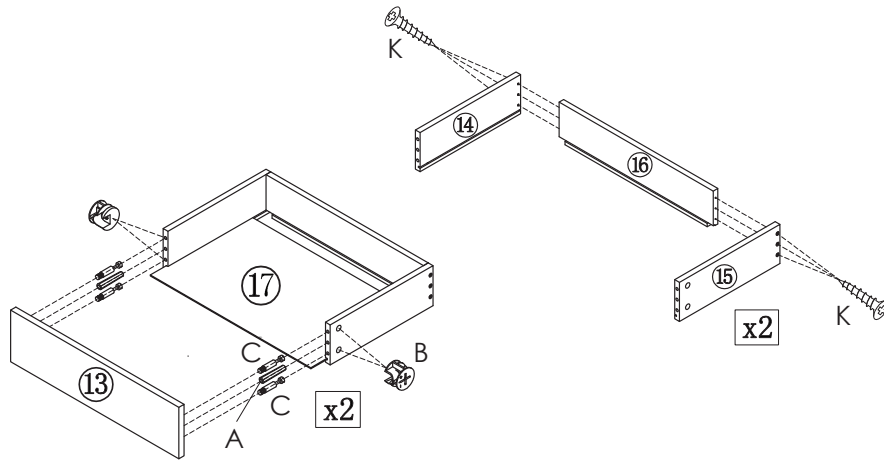
During assembly, hand tighten screws only. When the screws are in place, tighten completely.

Assembly Instructions

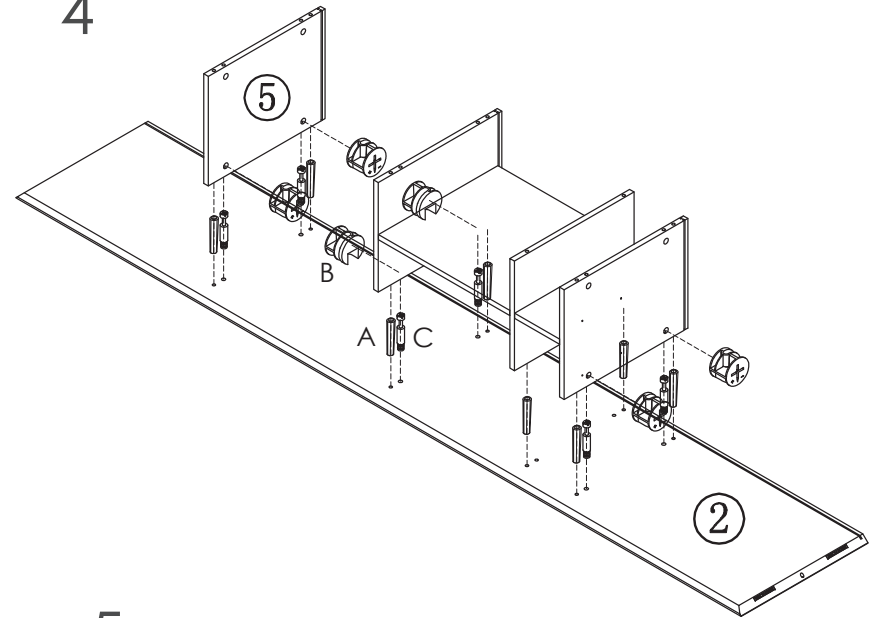
Media Stand Large (pg 2 of 6)

PLEASE NOTE: Check that you have received all components and hardware before assembling.
If you are missing any parts, contact your retailer

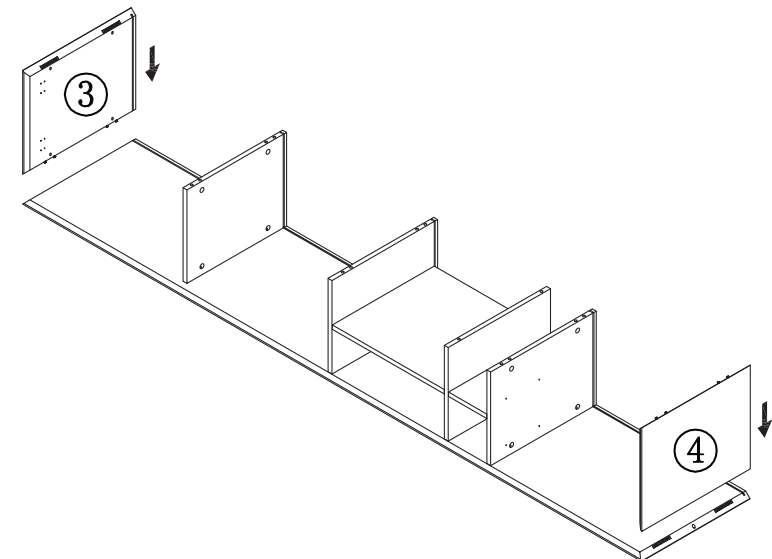
2



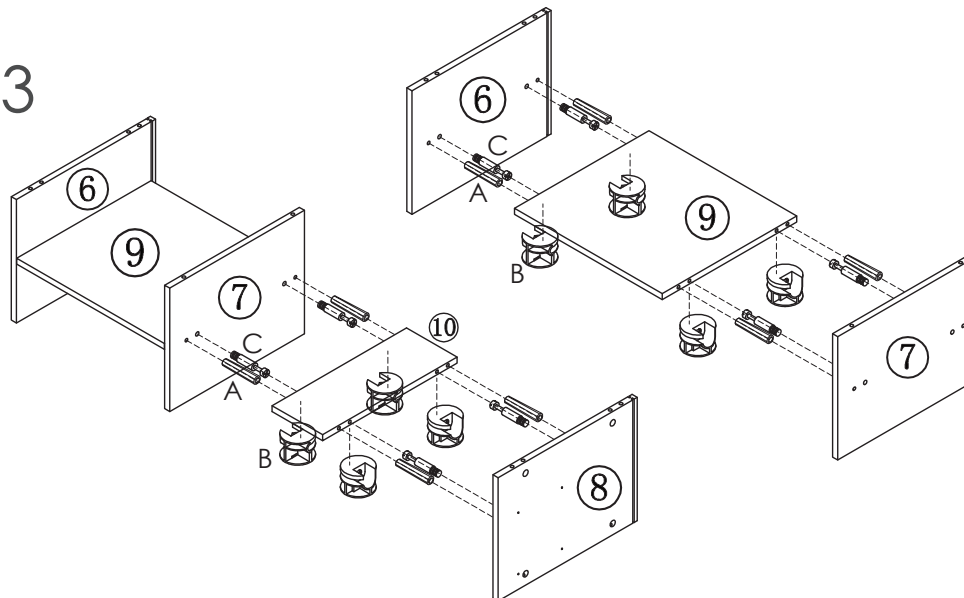
4



5



3

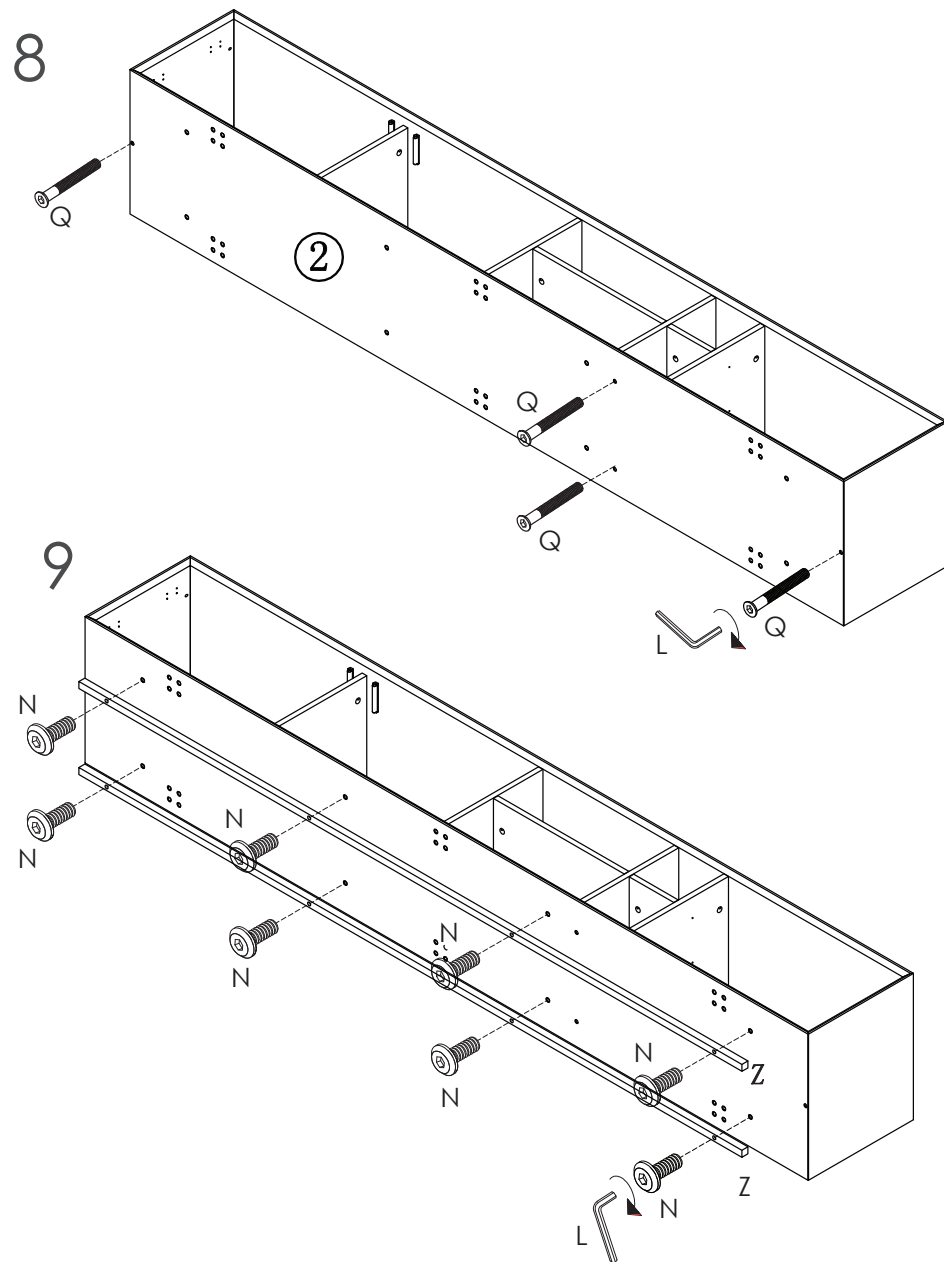
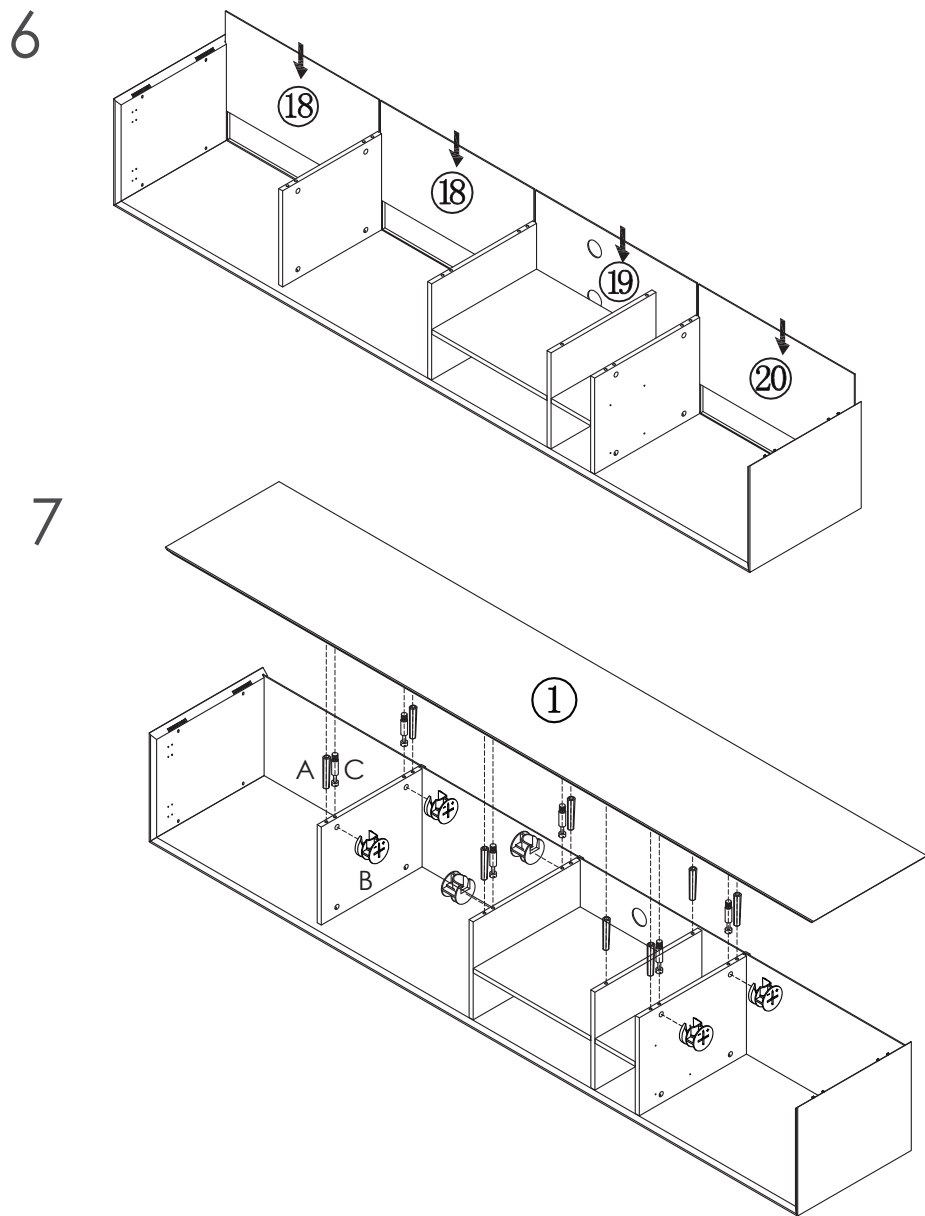


During assembly, hand tighten screws only. When the screws are in place, tighten completely.

Assembly Instructions

Media Stand Large (pg 3 of 6)

PLEASE NOTE: Check that you have received all components and hardware before assembling. If you are missing any parts, contact your retailer



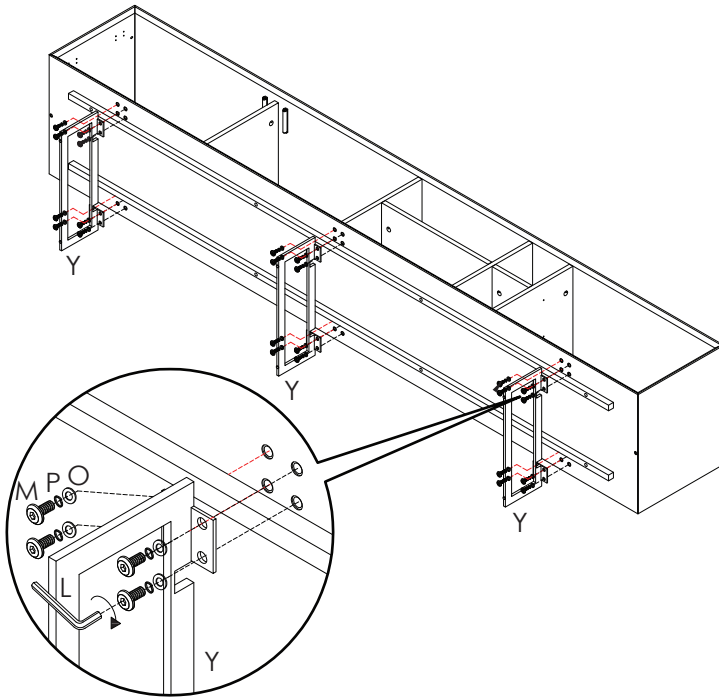
During assembly, hand tighten screws only. When the screws are in place, tighten completely.

Assembly Instructions

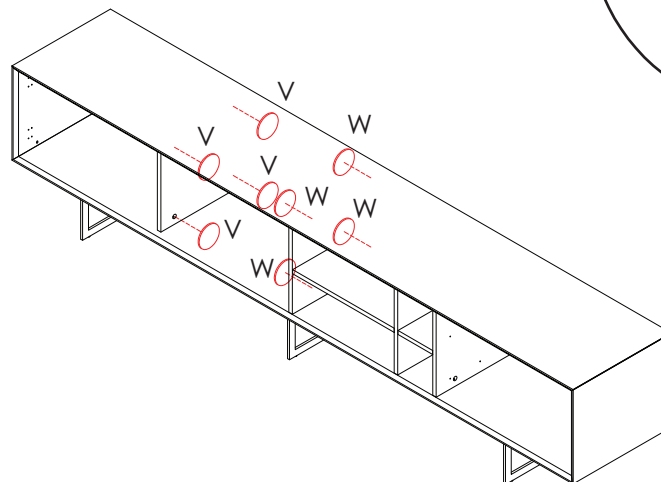
Media Stand Large (pg 4 of 6)

PLEASE NOTE: Check that you have received all components and hardware before assembling. If you are missing any parts, contact your retailer

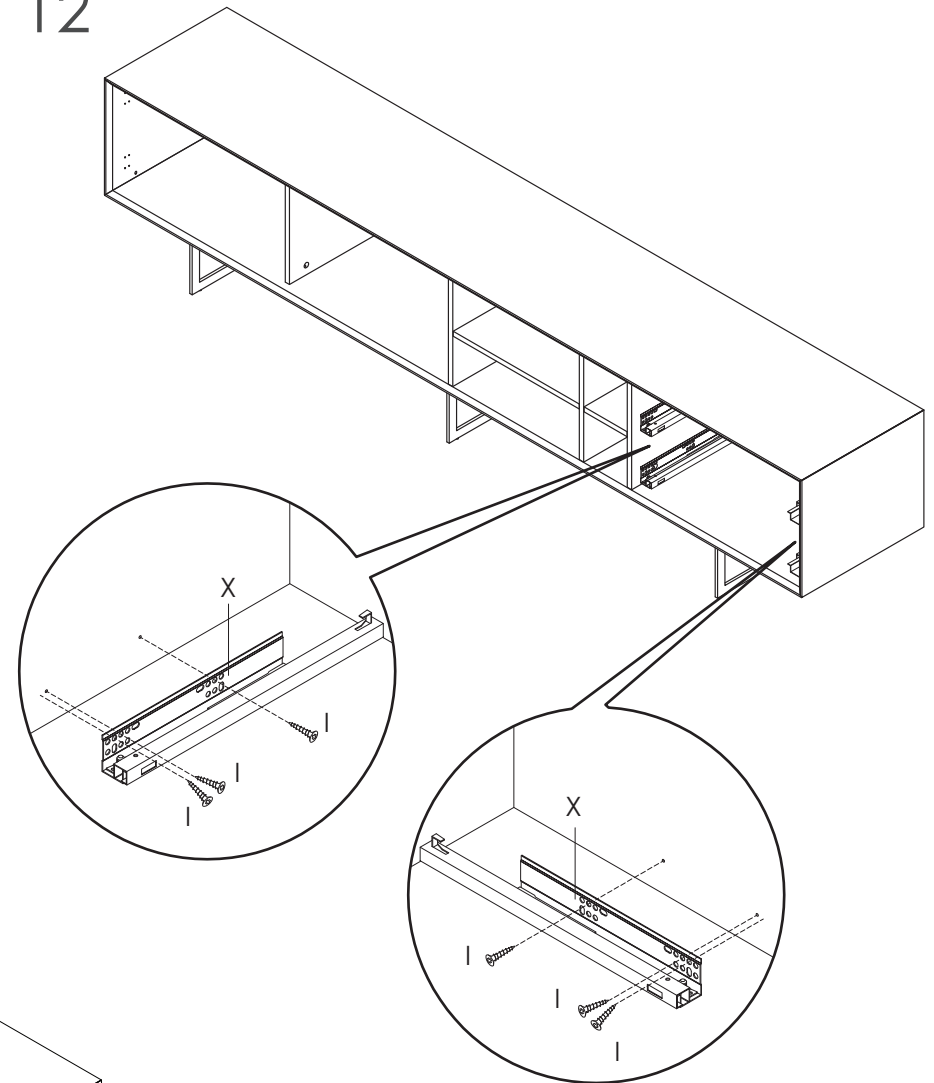
10



11



12



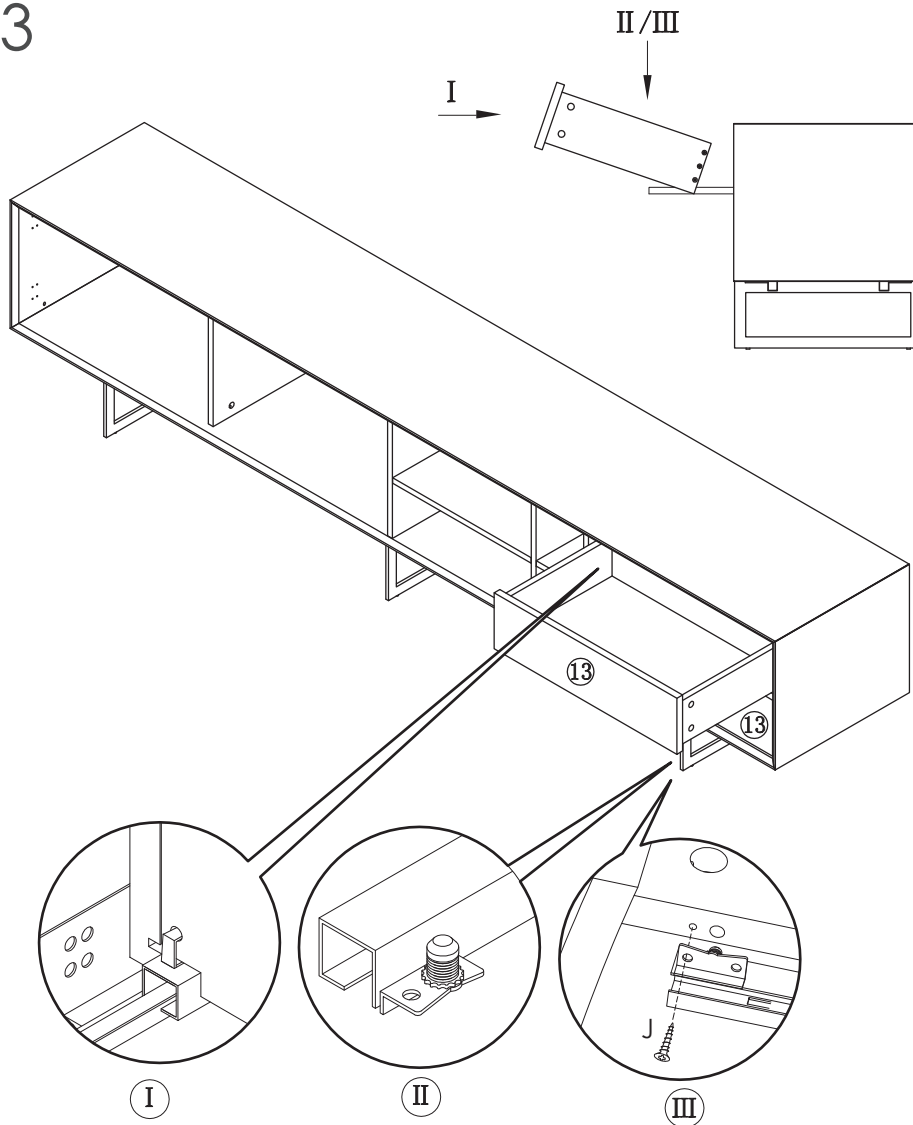
During assembly, hand tighten screws only. When the screws are in place, tighten completely.

Assembly Instructions

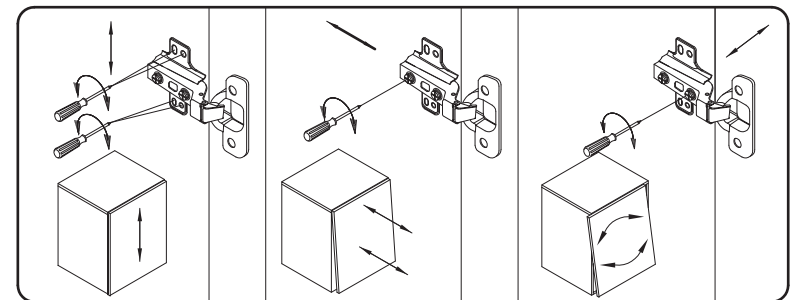
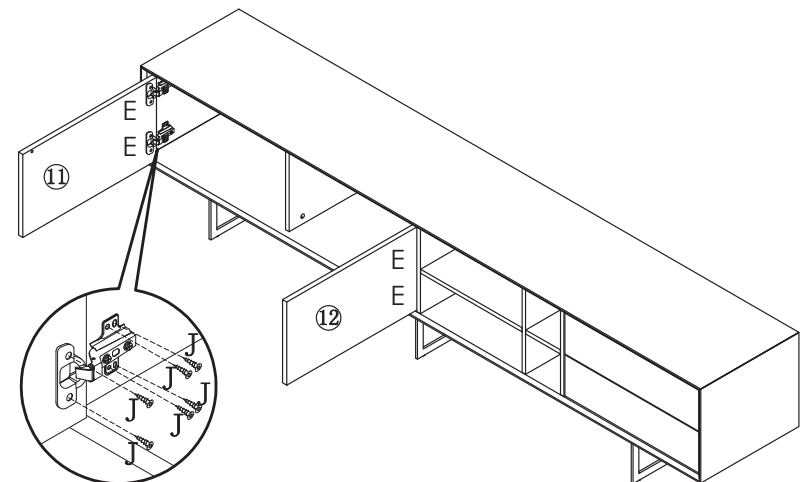
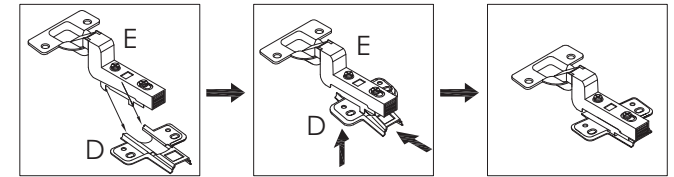
Media Stand Large (pg 5 of 6)

PLEASE NOTE: Check that you have received all components and hardware before assembling. If you are missing any parts, contact your retailer

13



14



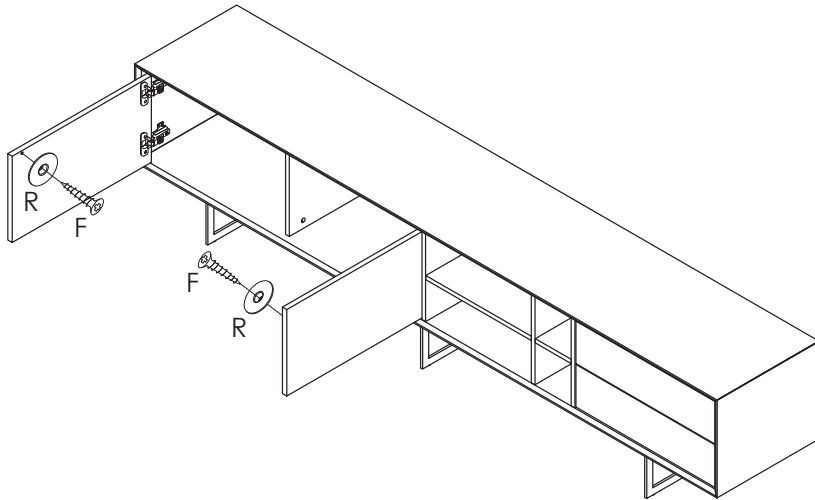
During assembly, hand tighten screws only. When the screws are in place, tighten completely.

Assembly Instructions

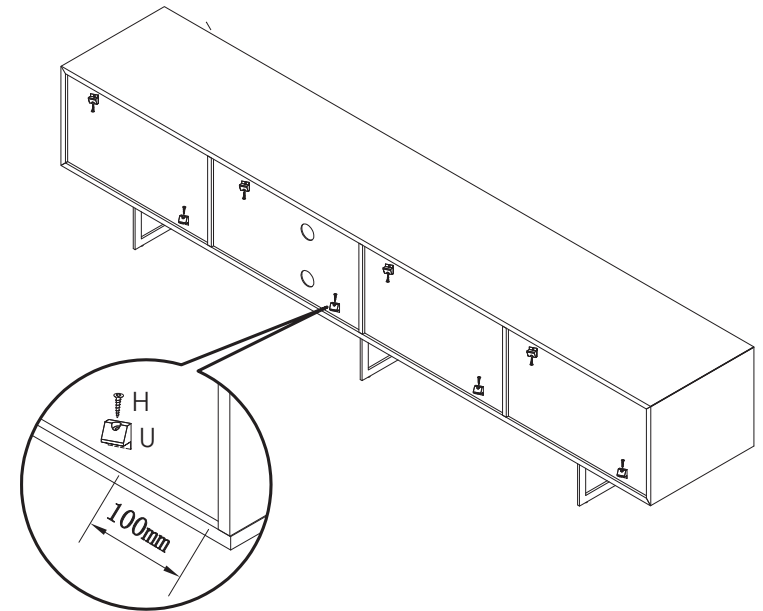
Media Stand Large (pg 6 of 6)

PLEASE NOTE: Check that you have received all components and hardware before assembling. If you are missing any parts, contact your retailer

15



16



During assembly, hand tighten screws only. When the screws are in place, tighten completely.