



# Let's get started!



Read through all of the instructions before starting



Care instructions are listed in the last step of this manual



Approx. 60 minutes assembly time



Make sure you have all parts and components before discarding any packing materials



2 people recommended for assembly

**Only use hand tools to assemble this item.** Do not use power tools. Do not tighten bolts or screws completely until all hardware is lined up and inserted into the holes.

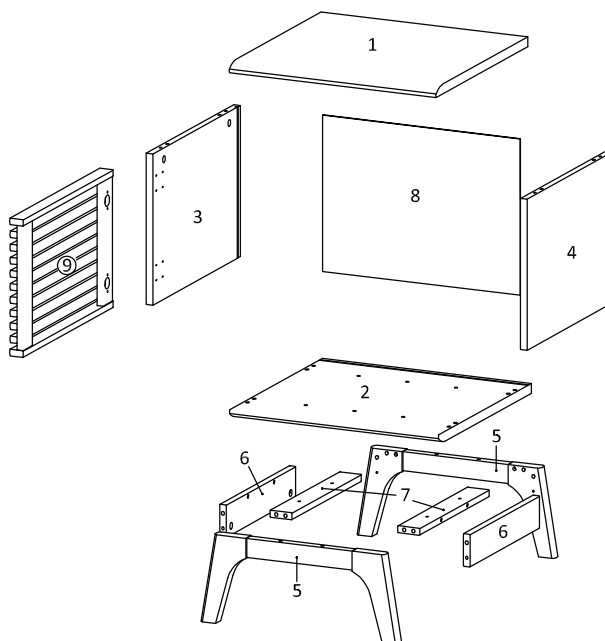
Do not over-tighten screws and bolts to avoid stripping the hardware or cracking the item.

Assemble your item on a flat, carpeted area, with plenty of space to work. This will prevent damage and scratches to your floors or the item while you're assembling the product.

Keep all components and packaging out of reach of children or animals to avoid risk of choking or suffocation.

## Furniture components:

1	Top Board	x1
2	Bottom Board	x1
3	Side Board Left	x1
4	Side Board Right	x1
5	Assembly Leg	x2
6	Support Board 1	x2
7	Support Board 2	x2
8	Back Board	x1
9	Frame Door	x1



## Provided hardware:

A		Cam Bolt Ø6 x 35 mm	x8
B		Cam Lock Ø15 mm	x8
C		Wood Dowel Ø8 x 30 mm	x28
D		Screw M 7 x 50 mm	x4
E		Allen Key	x1
F		Wedge	x4
G		Screw M 3.5 x 15.5 mm	x4
H		Screw M 6.4 x 25 mm	x4
I		Screw M 4.5 x 12.5 mm	x12

J		Screw Cap Ø15 mm	x4
K		Floor Protector	x4
L		Divider Wire	x3
HS26A		Hinge	x2

## What you need:

	Phillips Head Screwdriver
--	---------------------------

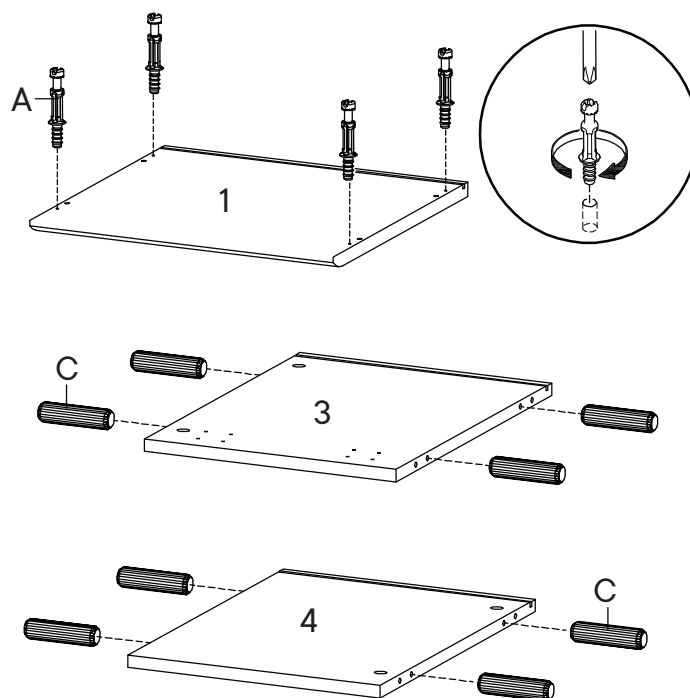
# Step 1

## HARDWARE

- A** Cam Bolt Ø6 x 35 mm x4
- C** Wood Dowel Ø8 x 30 mm x8

## COMPONENTS

- 1** Top Board x1
- 3** Side Board Left x1
- 4** Side Board Right x1



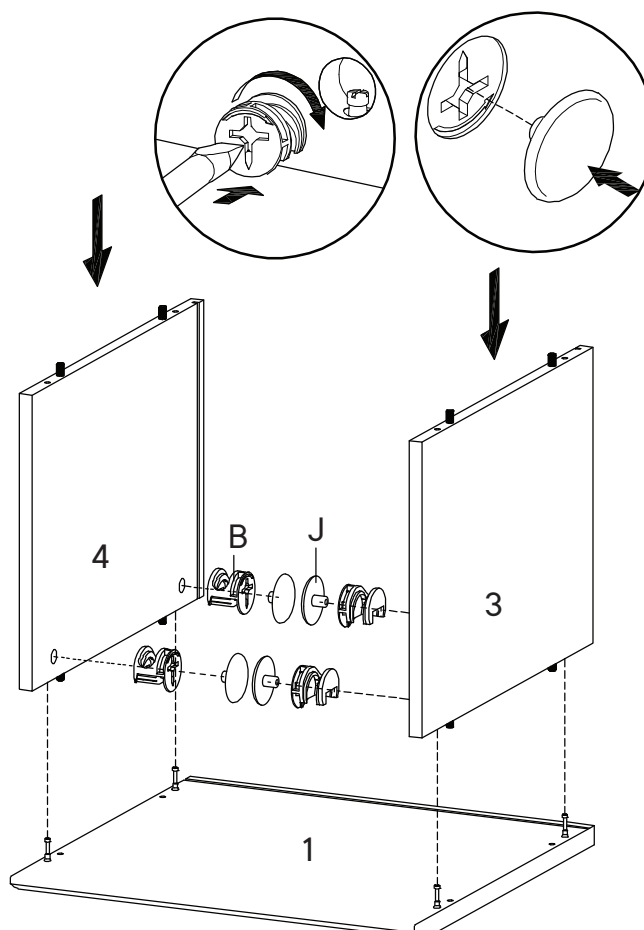
# Step 2

## HARDWARE

- B** Cam Lock Ø15 mm x4
- J** Screw Cap Ø15 mm x4

## COMPONENTS

- 1** Top Board x1
- 3** Side Board Left x1
- 4** Side Board Right x1



## Step 3

### HARDWARE

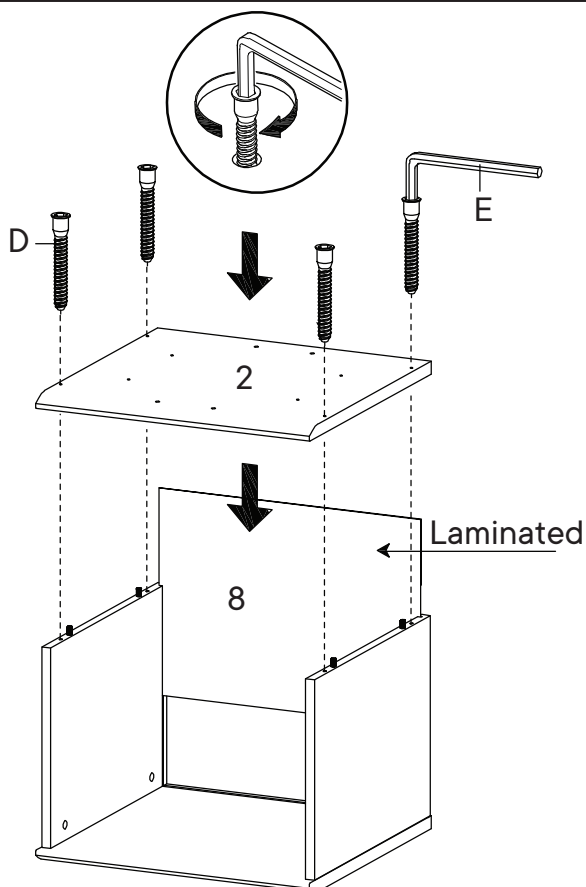
**D** Screw M 7 x 50 mm x4

**E** Allen Key x1

### COMPONENTS

**2** Bottom Board x1

**8** Back Board x1



## Step 4

### HARDWARE

**A** Cam Bolt  $\varnothing 6$  x 35 mm x4

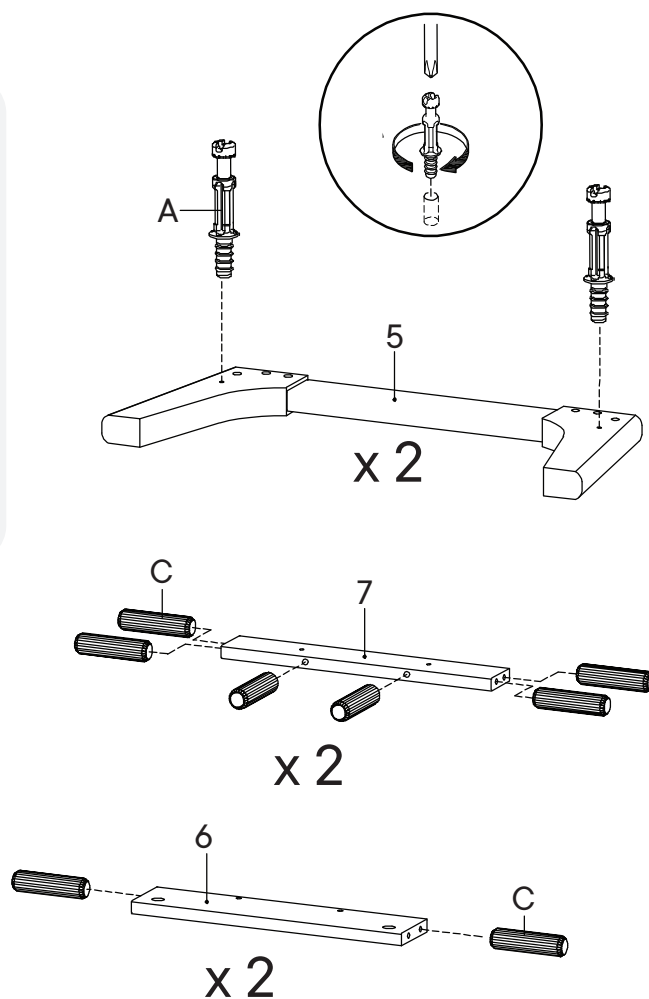
**C** Wood Dowel  $\varnothing 8$  x 30 mm x16

### COMPONENTS

**5** Assembly Leg x2

**6** Support Board 1 x2

**7** Support Board 2 x2



## Step 5

### HARDWARE

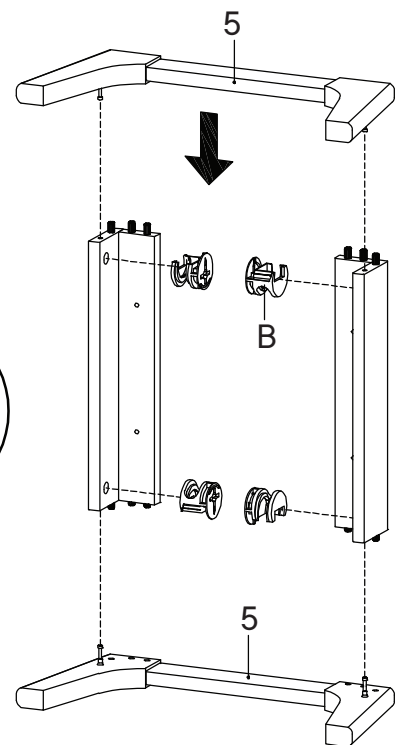
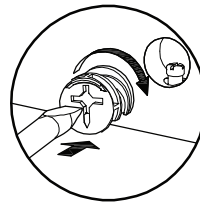
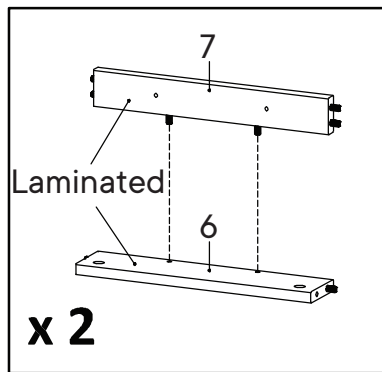
**B** Cam Lock Ø15 mm x4

### COMPONENTS

**5** Assembly Leg x2

**6** Support Board 1 x2

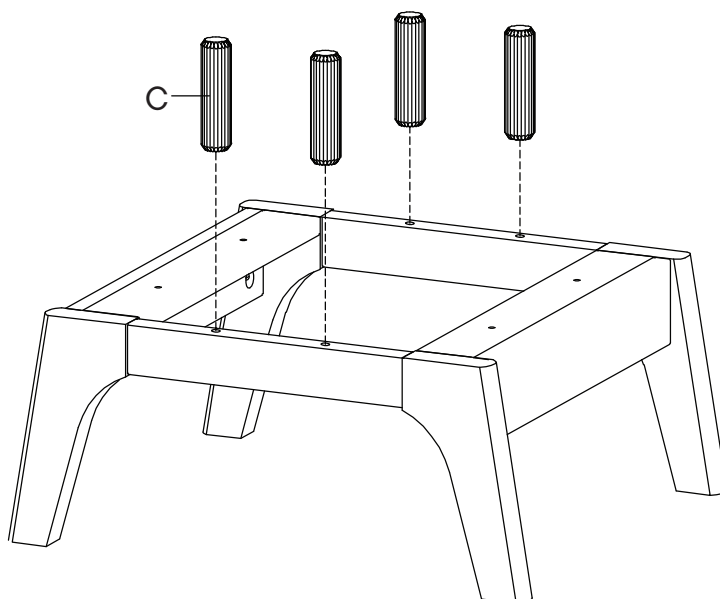
**7** Support Board 2 x2



## Step 6

### HARDWARE

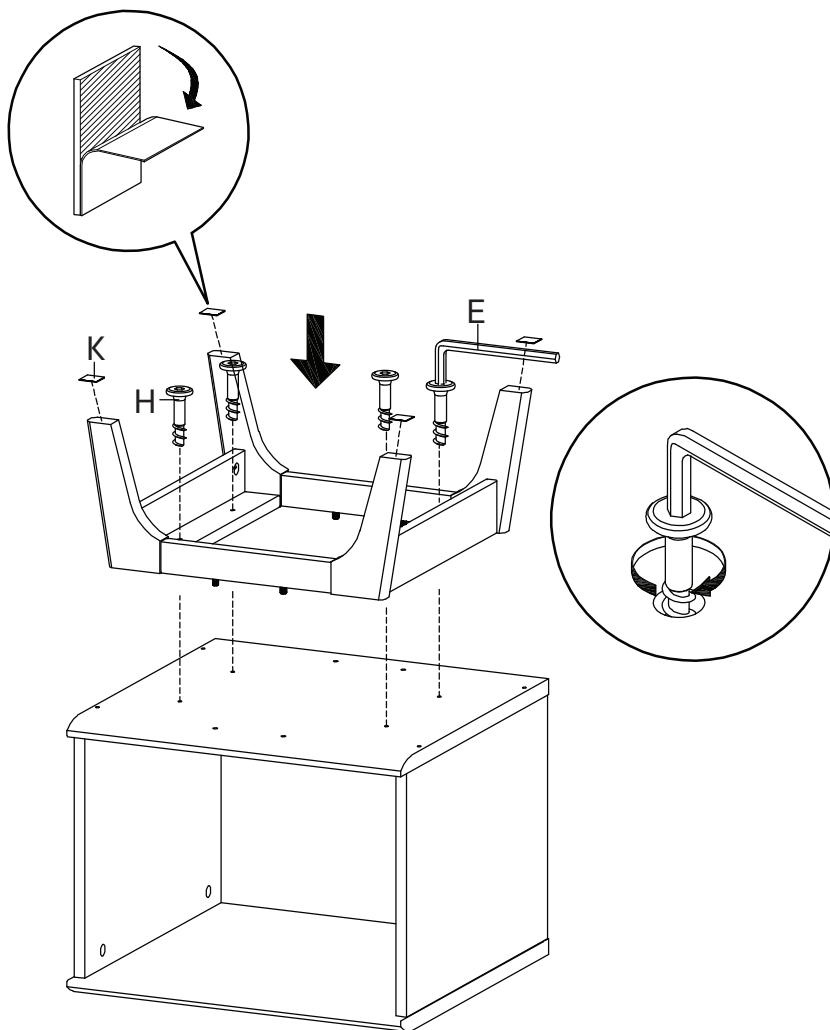
**C** Wood Dowel Ø8 x 30 mm x4



## Step 7

### HARDWARE

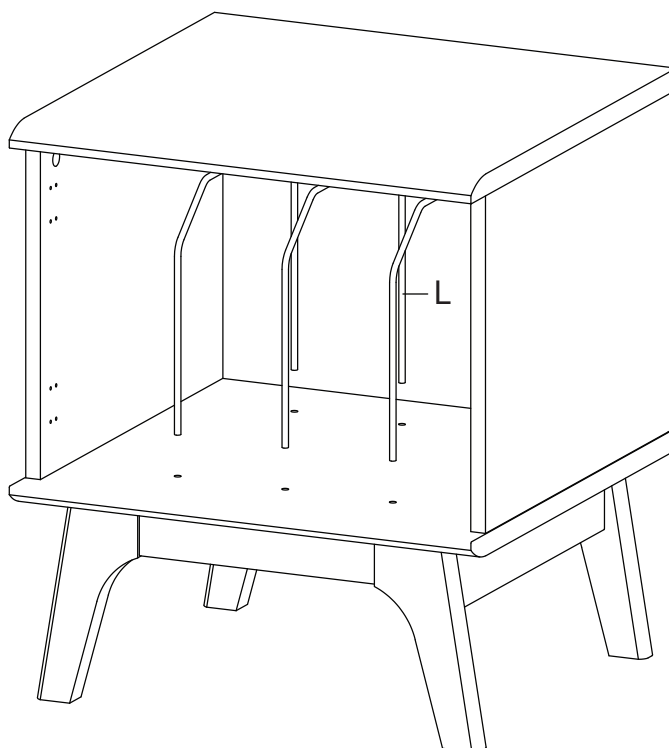
<b>E</b>	Allen Key	x1
<b>H</b>	Screw M 6.4 x 25 mm	x4
<b>K</b>	Floor Protector	x4



## Step 8

### HARDWARE

<b>L</b>	Divider Wire	x3
----------	--------------	----



## Step 9

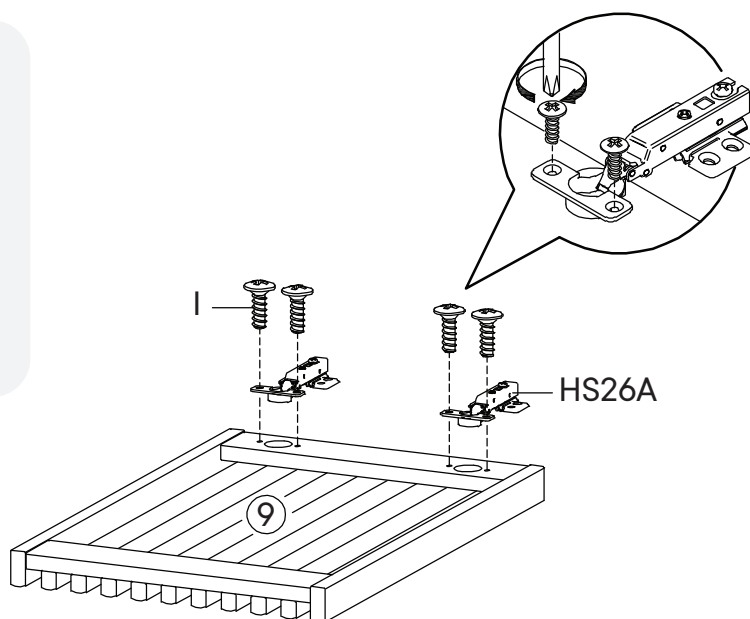
### HARDWARE

1 Screw M 4.5 x 12.5 mm x4

HS26A Hinge x2

### COMPONENTS

9 Frame Door x1



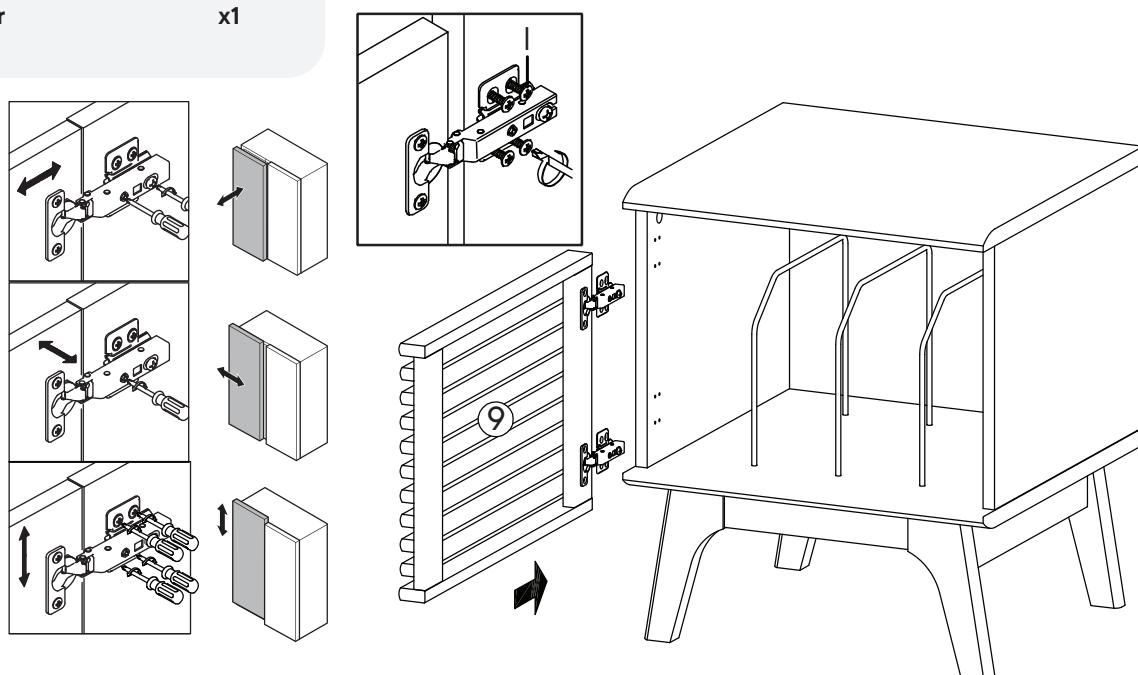
## Step 10

### HARDWARE

1 Screw M 4.5 x 12.5 mm x8

### COMPONENTS

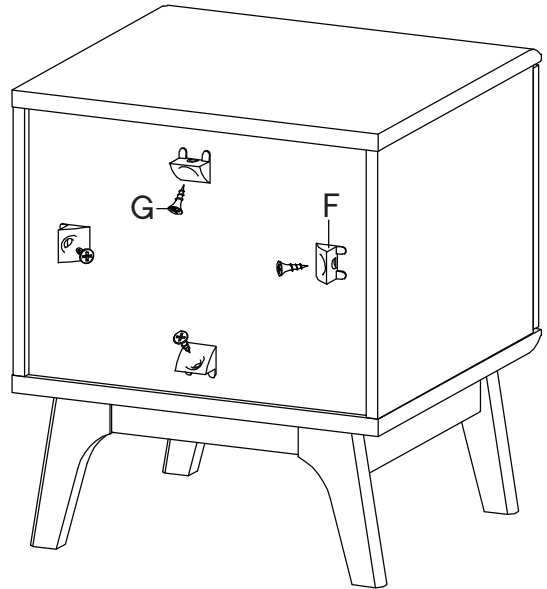
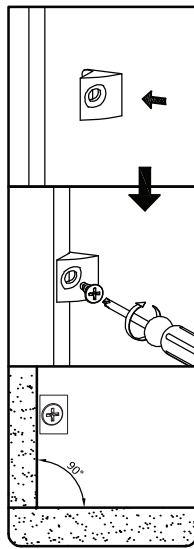
9 Frame Door x1



# Step 11

## HARDWARE

- F** Wedge x4
- G** Screw M 3.5 x 15.5 mm x4



## Great job!

Cabinet assembly is complete.

### ♥ CARING FOR YOUR ITEM

Indoor use only.

Not contract grade.

Clean using a non-abrasive cloth and a mild cleaner.

Never use harsh chemicals, as they could damage the finish or integrity of the item.

