

evolution  fires<sup>®</sup>

## ADVANCE SERIES

ADVANCE SERIES 1300  
ADVANCE SERIES 1500  
ADVANCE SERIES 1800  
ADVANCE SERIES 2000



HOW TO BUILD A MEDIA WALL  
FEATURING THE ADVANCE SERIES  
SCAN THE QR CODE



# TABLE OF CONTENTS

IMPORTANT INFORMATION .....	2
UNPACKING .....	3
OPTIONAL SIDE PANELS .....	4
PRODUCT INFORMATION .....	5
PRODUCT TECHNICAL INFORMATION .....	5
PRODUCT DIMENSIONS .....	5
MANUFACTURERS INFORMATION .....	5
INSTALLATION AND LOCATION .....	6
PLACING THE LOGS AND EMBERS .....	8
OPERATING THE FIRE .....	9
MANUAL CONTROL .....	9
REMOTE CONTROL .....	10
WI-FI / SMART CONTROL .....	13
USING THE APP.....	17
MAINTENANCE INSTRUCTIONS .....	18
CLEANING .....	18
SAFETY FEATURES .....	18
ENVIRONMENT .....	19
WARRANTY .....	20

Please follow the installation instructions carefully and then retain these instructions for future reference.



**Please read the instructions carefully BEFORE installation.**

## **Important information:**

- Keep the front of the fire at least 3 FEET AWAY from combustible materials. These include but are not limited to: articles of clothing, curtains, cushions, furniture, other soft furnishings and papers.
- In order to avoid the product overheating please DO NOT cover the heater.
- Always turn OFF and unplug the heater when it is not in use.
- DO NOT use if the appliance or its cables are damaged.
- NEVER place near bodies of water. These include but are not limited to: bathtubs, fountains, ponds and other water containers.
- NEVER allow any objects to enter or obscure any ventilation or exhaust openings as this may result in an electrical shock, damage to the product or may result in a FIRE.
- A heater contains hot and/or sparking components inside, Therefore, DO NOT use in areas where flammable gases, flammable liquids, paint and petrol are used or stored.
- AVOID the use of extension cables and timers to avoid FIRE.
- This appliance IS NOT freestanding and should not be used as such.
- ALWAYS use properly grounded fused and polarised outlets.
- ALWAYS use ground fault protection where required by electrical codes.
- To AVOID burns and/or personal injury NEVER touch any of the hot surfaces such as the heater vent.
- Power MUST BE DISCONNECTED before any cleaning, relocation or maintenance.
- Any replacement of circuitry or outlets should ONLY be performed by a certified electrician.
- To prevent a potential fire DO NOT attempt to burn any materials in the heater. . These include but are not limited to: marshmallows, paper and wood.
- DO NOT store or keep during transportation, outdoors or in a damp environment.
- NOT TO BE installed below an electrical socket outlet.
- DO NOT leave children unsupervised whilst the appliance is switched on.

## Unpacking:

Congratulations on your new electric fire. In order to unpack your product without causing any damage to yourself or the product, please take care and follow the instructions.

1. Place the box on a flat surface. Make sure you have enough space.
2. Remove any rings or bracelets which may scratch the product or be damaged during removal.
3. Carefully remove the appliance from the box and put all packing aside.
4. Please keep the original packing for further storage or transportation.
5. Prior to installation, test the product to check that the appliance is functioning correctly.

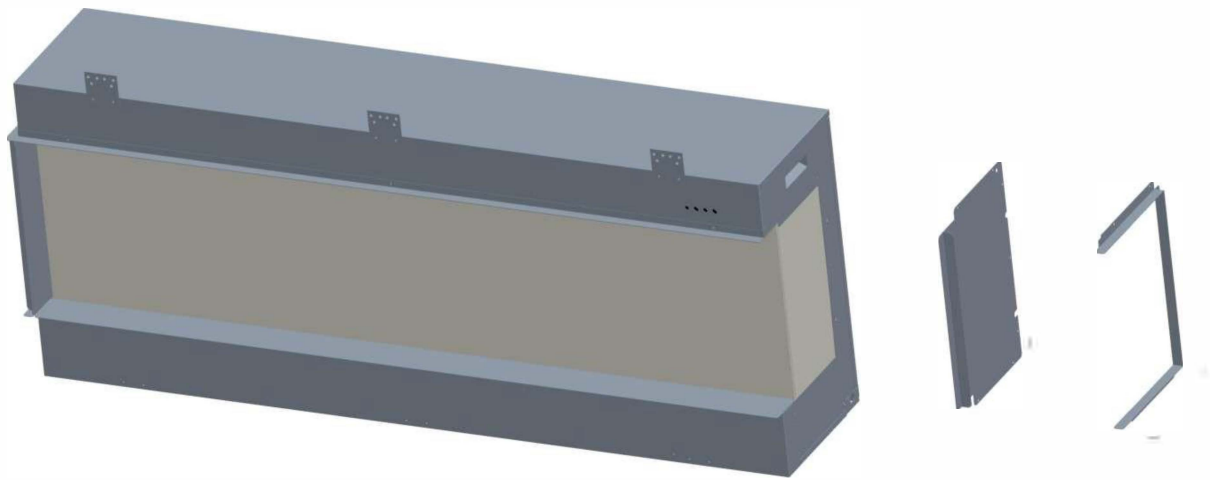
**KEEP PLASTIC BAGS AWAY FROM CHILDREN  
AND ANIMALS**

Use this product ONLY as described in this instruction manual. Any other use is discouraged in order to prevent bodily harm and/or fire.

## Optional Side Panels

When unpacked the fire has only one pane of glass visible at the front. The two side sections are covered by blanking plates.

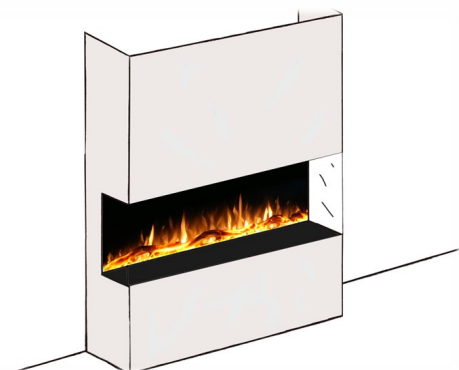
If the fire is to be installed as a two or three sided appliance these plates need to be removed. To do this unscrew the fire frame from the body of the fire, remove the panel and then refit the fire frame.



## Multi Sided Installation

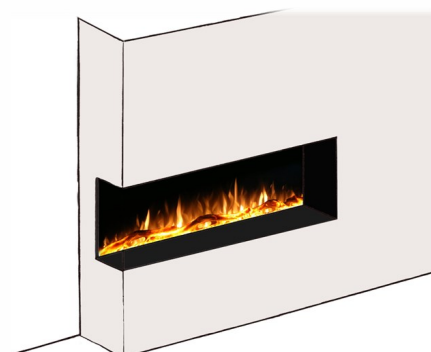
### Three Sided

Glass exposed on the front, left and right sides.



### Two Sided

Glass exposed on the front and left or right sides.



### One Sided

Glass exposed on the front only.



## Product information:

Product technical information :

Supplier name	Evolution Fires
Model number	EAS1300 EAS1500 EAS1800 EAS2000
Voltage	220-240V AC 50HZ
Fuse	13Amp
Nominal heat output	2.0KW
Minimum heat output	1.0KW
Maximum heat output	2.0KW

### Product Dimensions:

	Height	Width	Depth
EAS1300	601	1333	352
EAS1500	601	1533	352
EAS1800	601	1833	352
EAS2000	601	2033	352

## Installation and location:

Please read the instructions carefully BEFORE installation.

The installation **MUST** be carried out by a qualified person.

Connect the appliance to a single-phase AC supply of the voltage specified on the ratings plate.

In the instance that the fire is connected directly to the mains electricity supply, a fused switched spur with a 13 amp fuse must be fitted.

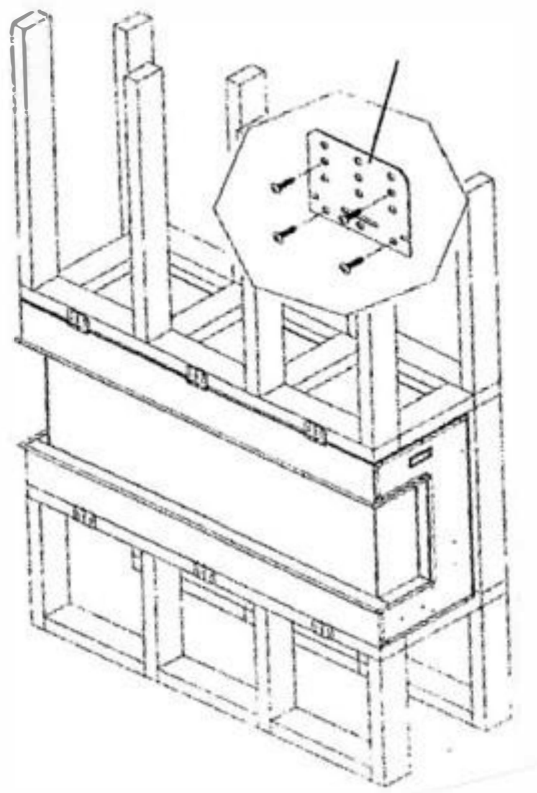
- The power supply must be able to handle 2000 watts (2kw).
- This appliance must be earthed
- Do not use an extension lead or a timer.

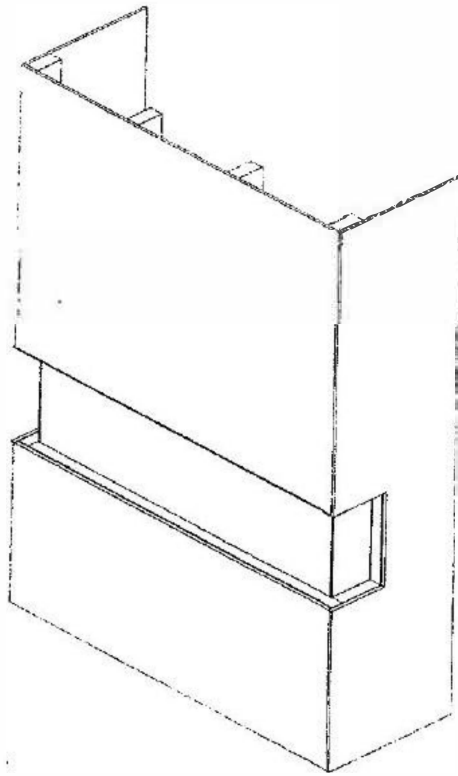
Always ensure that all electrical work complies with the relevant building regulations and the electrical code of practice.

This product is designed to be either wall mounted and / or fitted and fixed inside a frame. This appliance has multiple electrical components that must be kept away from water and damp or moist conditions.

This product should be fitted using one of the following options:

1. Wall Mounted - Using the H bracket which is located on the back of the appliance. It is important to use fixtures that are appropriate for the type of wall. The wall must be of sound construction and able to hold the weight of the appliance.
2. Mounted on a solid base - Please keep a distance of at least 5 cm from any non-combustible materials.
3. Fitted into a Studded Wall - Which needs to be finished with either plasterboard or a plastered finish. The fire can then be installed with the facing trim of the fire flush up to the plastered finish. See Drawings below:





Make sure that the cable is not run across the heater and can be plugged into the mains socket without the use of an extension cable.

Please make sure that the plug socket outlet is in a location that is easily accessible. The appliance should be switched off when not in use and for maintenance.

## **Crystal Fuel Bed**

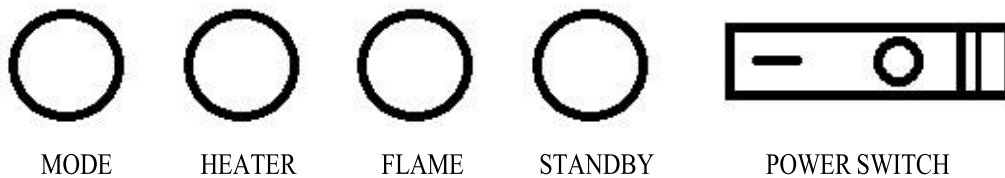
The accessory box which is packed inside the fire contains the mixed black and white nuggets that create the fire bed. These should be placed on the base of the fire in a random manner.

## **Log Fuel Bed**

Scatter the vermiculite on the base, place the coals on top of the vermiculite. The logs are then placed in a position of your choice on top of these. The logs are delicate and should be handled with care.

## Operating the fire:

### Manual control:



This appliance can be operated manually using the controls situated on the top right hand side of the fire screen.

**ON/OFF POWER SWITCH-** This switch is used to turn the mains supply to the appliance on or off. When the switch is in the ON position an orange indicator light will show in the middle of the screen. This needs to be in the on position for both manual and remote operation.

**STANDBY-** Used to switch the appliance ON or OFF into standby mode.

**FLAME-** Pressing this button will cycle through the four different flame brightness levels.

**HEATER-** Use this button to select low heat, high heat or heater off.

When low heat is selected the indicator light will glow orange.

When high heat is selected the indicator light will glow red.

Please note that the heater will only operate when the room temperature is below the temperature on the handset, which can be adjusted using the remote or through the app. When the heater switches off the fan will continue to run to cool the appliance.

**MODE-** Shuffle through a selection of pre-programmed effects.

### **Remote control:**

Ensure that the ON / OFF Power Switch on the fire is in the ON position.

Point the remote-control handset directly towards the fire and press the appropriate button to operate the fire.

### **Standby button:**

Use this button to switch the fire on / off, and unlock the remote if remote is locked.

### **Heat button:**

Use this button to control heating level.

### **Flame button:**

Use this button to control brightness level.

### **Setting the colour functions:**

Press lamp buttons: 

Then rotate the rotate button, will change colour of flame light, bottom light and top light separately.



## **Adjusting the desired temperature:**

While the fire is heating on, use rotate button to set the desired temperature.

A confirmation beep will be heard from the fire. If the room is already warmer than the temperature set then the heater will switch off until the thermostatic sensor detects a fall in temperature.

## **Adaptive Control**

Adaptive control works in target temperature 25° C with high heat.

## **Breathing and Demo Control**

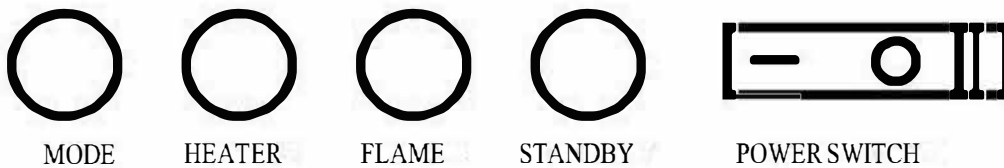
Press breathing light button or Demo button will switch the function on / off.

## Wi-Fi / Smart control:

### Preparation

In order to prepare please check that your mobile phone is connected to your Wi-Fi router. Plug your fire in to the wall. Switch the fire on at the wall socket. **DO NOT** use the STANDBY button to turn on, use the power switch. You should see an orange dot appear on the screen.

The buttons on the fire are as follows:



### 1. Download the 'Smart Life' APP

- The app is free on both Google play and the app store.
- Please search 'Smart Life – Smart Living'.
- Download the app.

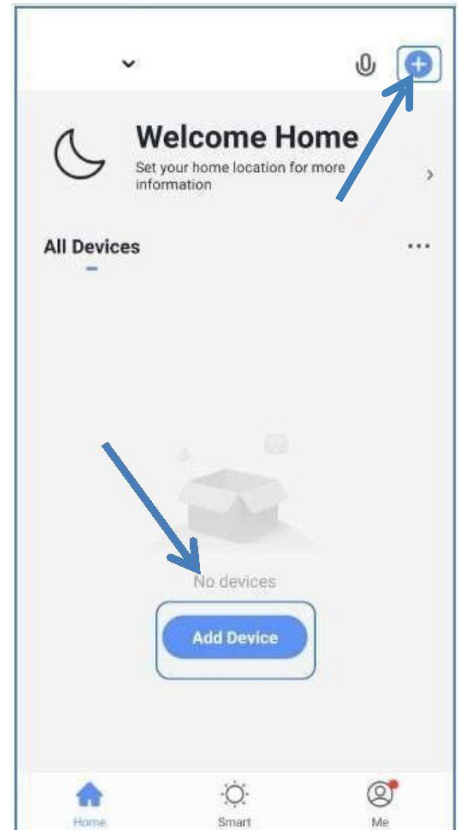


### 2. Open the Smart Life App, Register and Log in

- Open the app and click the register button, unless you have an existing account, then please log in with your existing details.
- Input an email, the app will send a code in order to verify your email.
- Once you have received the code, input the code and create your password.

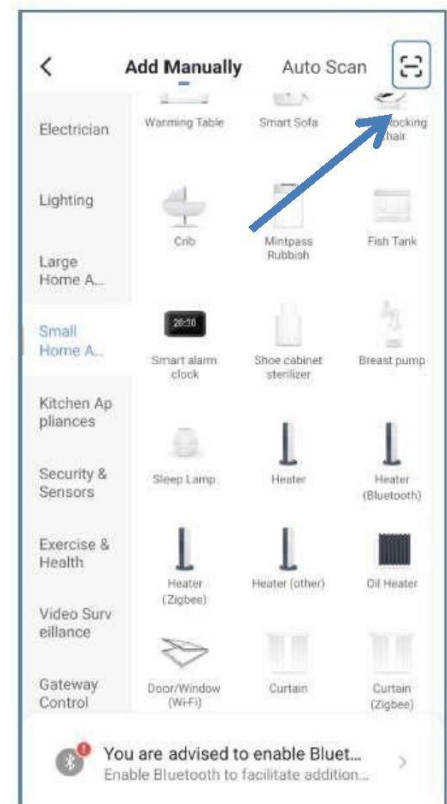
### 3. Add your device

- Please touch the 'Add device' button or the 'Add' symbol to add your device.



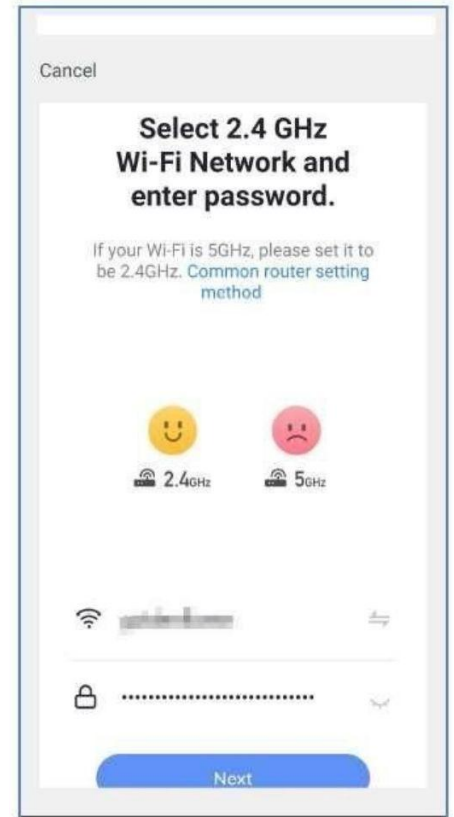
### 4. Scan the QR code

- Touch the 'SCAN' symbol.
- Scan the below QR code.



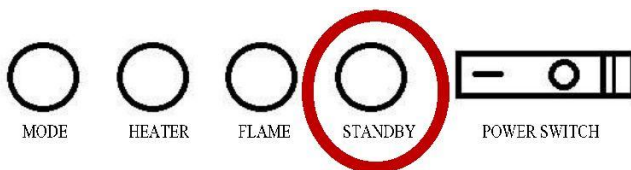
### 5. Connecting to your Wi-Fi

- Select your Wi-Fi network and input the password of your Wi-Fi network.

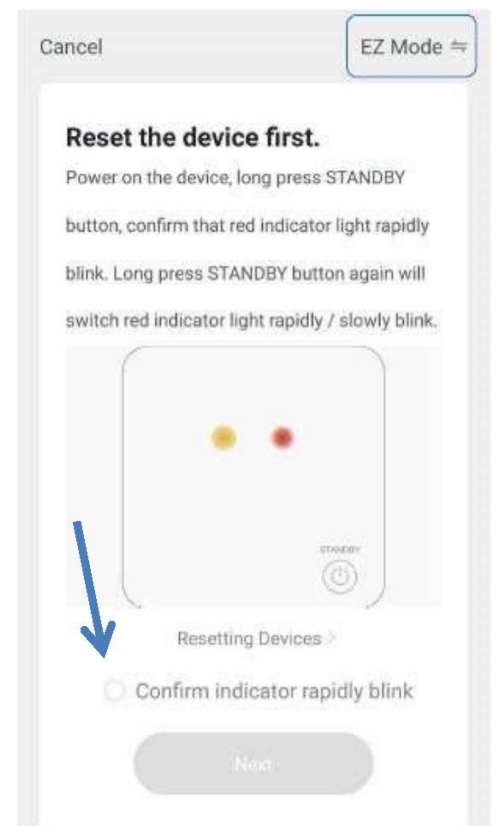


### 6. Establishing a connection

- Give a long press to the standby button for around 3 seconds.



- You should see a red light next to the orange dot in the middle of the fire screen. The red light should be blinking quickly on the screen. Roughly 2 times per second.
- When prompted, if the red light is blinking rapidly, confirm that the indicator is rapidly blinking by checking the circle and then by pressing 'Next'



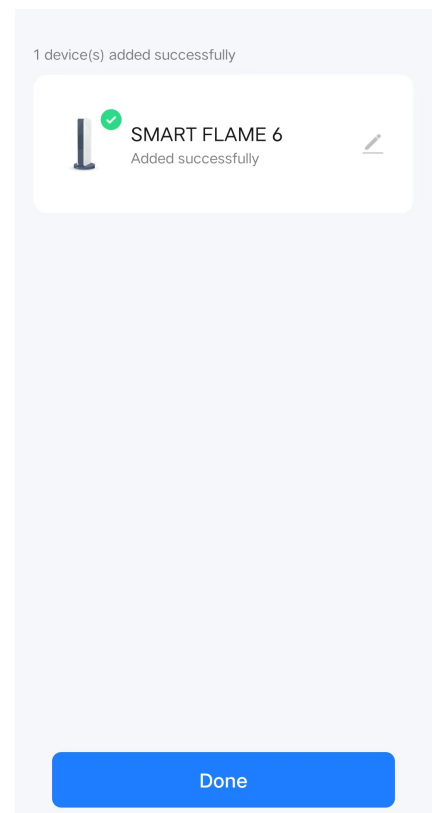
### 7. Adding your device

- Wait whilst the app adds the device. Please keep the phone close to the device whilst the device is syncing.
- If it fails to sync Repeat steps 4,5 and 6



### 8. Your device has been added successfully.

- Now your device has been successfully added click on the device and you are ready to start using your phone to control your fire.



# Using the App



1. To turn the fire on press the Switch button at the bottom of the screen

2. To set timers press the clock button at the bottom right of the screen. 7 days timer is available on the APP

3. Popup buttons:  
Mode- use this button to select preset colour mode.  
Heat- use this button to select heat level.  
Speed- use this button to select speed level



Along the top of the screen there are 4 tabs 'FLAME, LOGS, EMBER and SYNC'

Flame- use this tab to control the colours of the flames.  
Logs- use this tab to control the colours of the Logs.  
Ember- use this tab to control the colours of the embers.  
Sync- use this tab to control the colours of all light.

For the flame, ember and logs settings you can turn the default Orange colour on / off by clicking the button and can add additional colours by pressing the colour wheel and then selecting your preferred colour from the big wheel above. Both the orange button and the colour wheel button can be pushed on and off.

Along the bottom of the screen, there are 5 buttons:  
Breathing- use this button to switch breathing light on / off.  
Adaptive- use this button to switch adaptive on / off.  
Switch- use this button to switch the fire on / off.  
Demo- use this button to switch demo on / off.  
Timer- use this button to set weekly timer.

## Maintenance:

You MUST remove the plug from the socket outlet and allow the heater to cool completely before cleaning or maintenance.

## Cleaning:

A soft dry cloth, such as microfiber cloths, can be used to remove dust and for general day to day care.

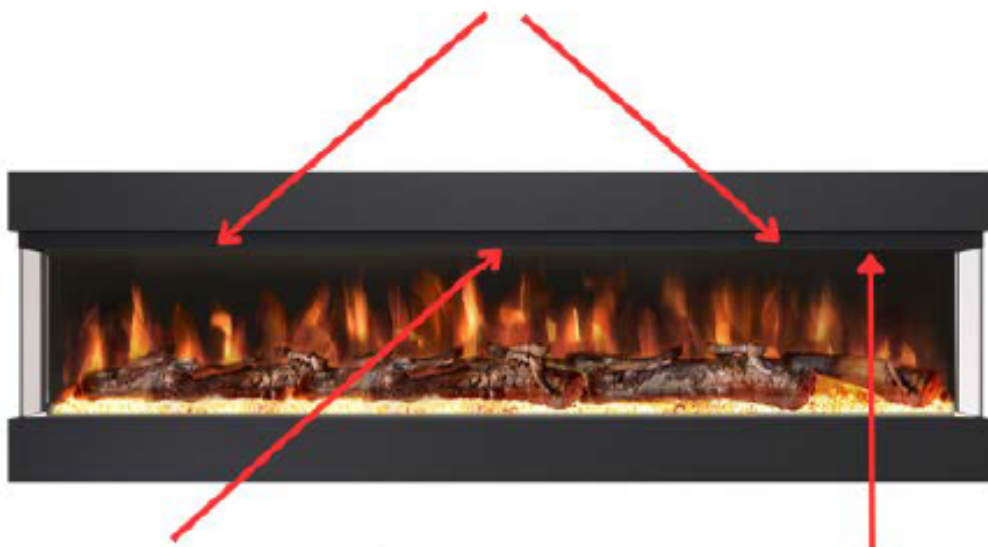
If a more thorough clean is needed a damp cloth, NOT WET, may be used to wash the exterior surfaces. The glass can be cleaned with glass cleaner and a soft cloth.

The heater air flow vents must be hovered at least once per year.

## WARNING

THE APPLIANCE MUST FULLY DRY BEFORE SWITCHING ON.

## AIR FLOW VENTS



Heater Location

Control Panel

# Safety Features

As this appliance contains a heating component there is an automatic thermal cut out safety feature. This feature stops the product from overheating and from potentially causing a fire.

If the appliance reaches a temperature above the guideline parameters the automatic thermal cut out safety feature will activate and the heater will cut out. However, the fans will continue to run in order to cool down the appliance

Once sufficiently cooled the automatic thermal cut out safety feature will automatically reset and the heater will be restarted

If this problem continues, turn off the fire and disconnect from the plug socket. Check that none of the ventilation vents are obstructed

...

# Troubleshooting/ FAQ

<b><u>Problem</u></b>	<b><u>Possible Cause</u></b>	<b><u>Solution</u></b>	<b><u>Note</u></b>
<b>Fire not turning on</b>	Fire not plugged in or switched on at socket	Check plug is correctly fitted into socket and the socket is turned on.	If all solutions have been tested and problem persists, a new control panel is required.
	Fuse blown	Disconnect plug and inspect the fuse. Replace with a 13A fuse if broken.	
	Faulty control panel	If the controls do not work, press each control continuously one at a time. After a few cycles, the controls should recognize the input and work correctly.	
<b>Noisy heater</b>	Fan clogged	Remove the heating unit and remove dust from fan.	If all solutions have been tested and problem persists, a new heating element/ fan assembly is required.
	Fan unbalanced/ catching on housing	Manually re-center fan on each side. Check fan is not warped or damaged.	
<b>Heater only blowing cold air</b>	Fan clogged	Remove the heating unit and remove dust from fan.	If all solutions have been tested and problem persists, a new heating element/ fan assembly is required.
	Faulty heating element	Inspect the heating element and make sure all wires are firmly connected.	
	Faulty fan motor	Fan may be rotating too slow.	
<b>No flame picture/ partial flame picture</b>	Loose connection	Ensure all wires are connected firmly.	If all solutions have been tested and problem persists, a new PCB is most likely required.
	LED blown (If partial flame picture)	Test the faulty LED strip using another LED power connector that you know works. If LED strip still doesn't work, the fault is most likely with the LED strip and not the PCB.  New LED strip required.	
	Damaged PCB	New PCB required.	

<b>Heater cutting out</b>	Build-up of hot air	Ensure inlets and outlet are free from obstruction and there are sufficient clearances surrounding the unit.	If problem persists, the installation will need assessed to ensure it adheres to all required minimum clearances as stated in this manual.
	Thermostat setting causing heater to cut-out	Adjust thermostat setting on remote to maintain desired room temp or deactivate thermostat setting.	-
<b>Heater switching on without activation</b>	Thermostat set to keep room at certain temperature.	Adjust thermostat setting to maintain desired room temp or deactivate thermostat setting.	If all solutions have been tested and problem persists, a new PCB is required.
	Thermostat faulty	Replace PCB	

**NOTE: Wiring and exploded diagrams to assist with fire repair are available on request.**

**Product Warranty**

**Your Product is guaranteed for two years from the date of purchase.**

Should this product prove defective within two year of purchase due to a design fault, workmanship or material breakdown, the product will be repaired free of charge.

Product warranty is subject to the following conditions:

- The product is to be used for domestic purposes only in accordance with the operating instructions.
- All warranties will be invalidated if unauthorized repairs or modifications are made to the electric fire, or in case of accident, misuse or damage caused by improper installation, or damage occurring during transit to or from the repairer.
- This warranty does not apply to heating elements, bulbs or fuses within this product

Your rights under this guarantee are additional to your statutory rights, which in turn are not affected by this guarantee.

If your fire is to be built on to an existing chimney breast, the chimney must be blocked off as the drafts can affect the appliance causing it to over heat.

If the problem continues, keep the product unplugged from the power socket and contact your supplier.

### WARNING!

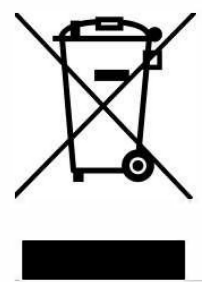
- The heater should NEVER be submerged in water.
- The interior should NEVER be wet.
- Cleaning chemicals such as but not limited to detergents, alcohols and abrasives should NOT be used.

## **Environment:**

DO NOT throw out your appliance or its parts as municipal waste. Contact your local government for advice on the collection services and proper protocol in your area.

Please DO NOT dump your appliance as if not properly treated hazardous substances can leak into water supplies effecting animals and people's health and wellbeing.

If you are replacing your old appliance, retailers are legally obligated to dispose of your old appliance without any additional cost.



## 2-Year Limited Warranty:

You can register your product using the serial number above at [www.evolutionfires.co.uk](http://www.evolutionfires.co.uk)

Your product comes with a 24-month manufacturer guarantee the guarantee covers the electrical firebox only, Woodwork is excluded from the guarantee. If you encounter any faults during the specified period, we suggest visiting our website and complete the report a fault page which can be found in the footer.

Please inspect and test all products before installation as we will not be held liable for product damages once the product has been installed.

Removal of the plug will invalidate your warranty.

Product warranty only applies if purchased through an Evolution Fires authorized seller only. The warranty is only valid while the product remains with the original purchaser. If the Item is installed in another home and has a new ownership the warranty does not apply.

For all warranty claims please send an email to [support@evolutionfires.com](mailto:support@evolutionfires.com) along with your purchase order and serial number and a description of the fault and one of our team will get back to you.

Thank you for purchasing one of our products