



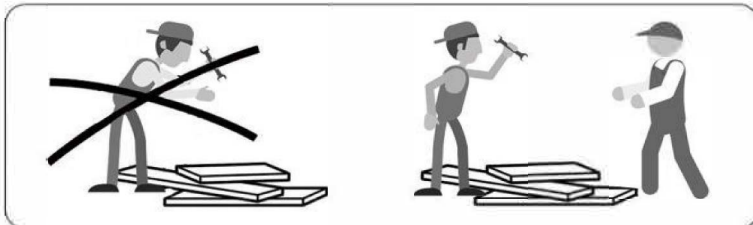
***Tips for height adjustment:**

To Lower the Seat: step on the step pedal all the way down to lower the seat.

To Raise the Seat: consecutively step on the step pedal halfway to slowly raise the seat to a higher position.

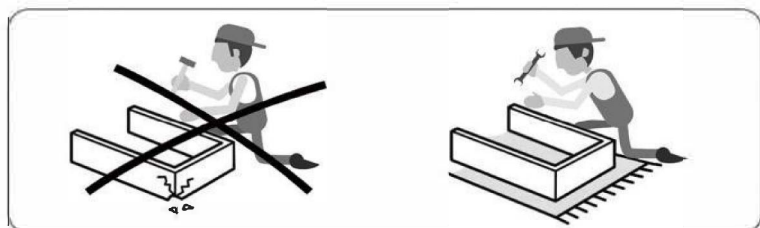
Please do not hesitate to contact us if there are any problems with the items.

Please also leave us the order number and the pictures or videos of the item, and we will reply to you within 48 hours.



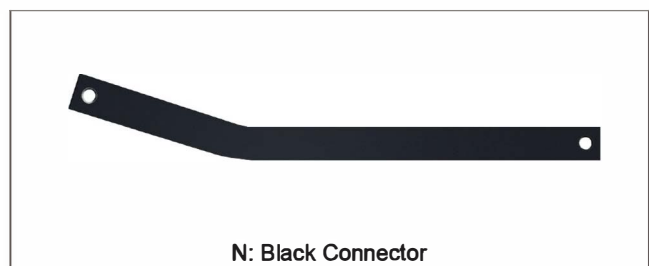
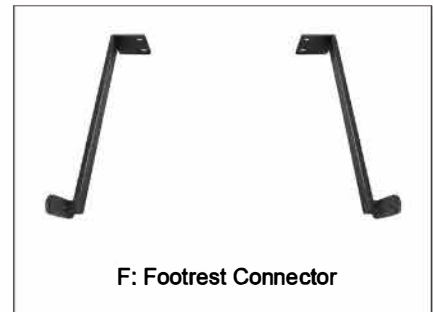
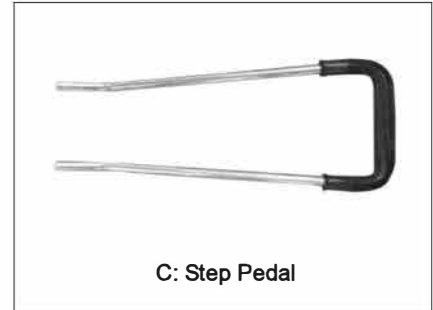
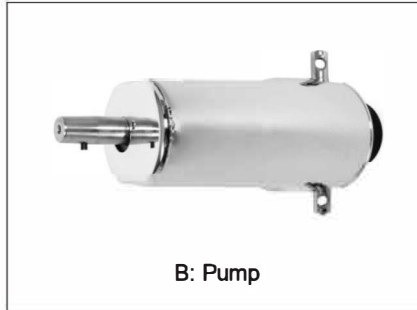
Assemble with the assistance of another person.

Carefully protect the product during installation.



Installation Instructions

1. Parts Included



Please note: The F Footrest connector *2 & N Black Footrest connector *1 are bundled on the bottom of the cushion, remove the cushion from the seat, and you will see them.

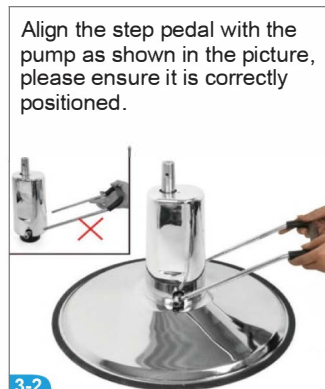
2. Installation Instruction

Please note: the top seat could be heavy, 2 people are recommended for the installation

Step 1. Attach the Step Pedal to the Pump



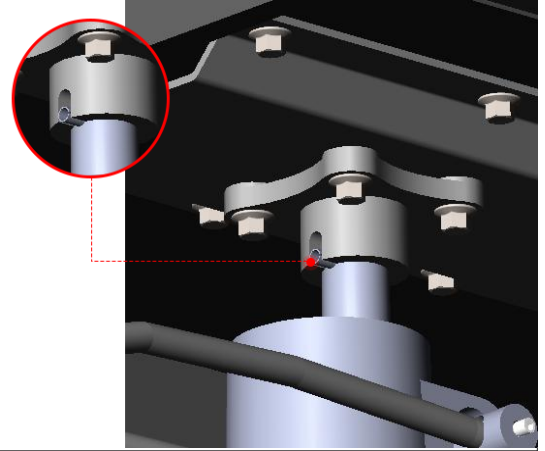
1. Parts you will need for this step.



Step 2. Install the Chassis

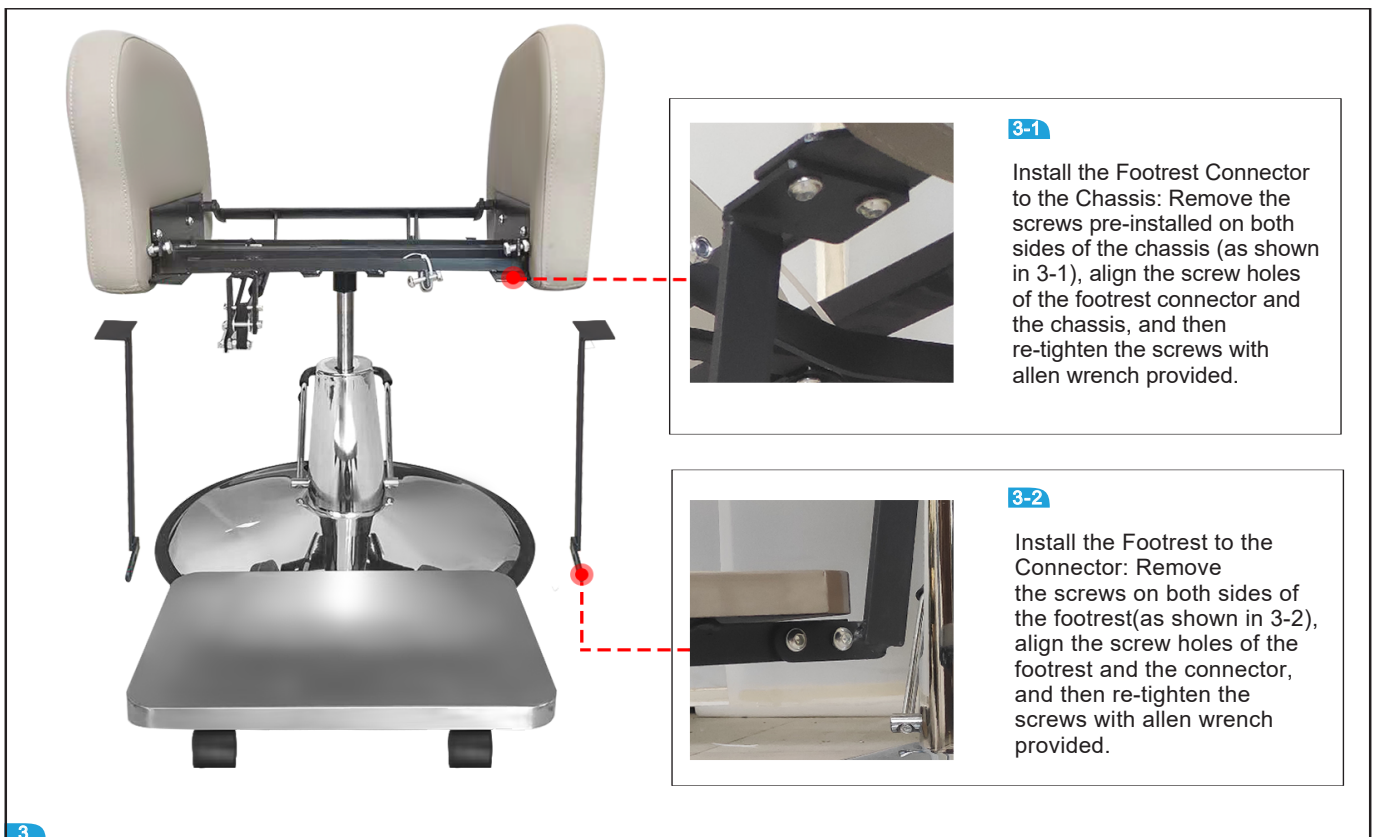


Place the Chassis onto the hydraulic pump (please note the pinon the pump toward the gap of the pump joint, as shown in 2-1).



Step 3. Install the Footrest Connector and Footrest

Parts you will need for this step.



3-1

Install the Footrest Connector to the Chassis: Remove the screws pre-installed on both sides of the chassis (as shown in 3-1), align the screw holes of the footrest connector and the chassis, and then re-tighten the screws with allen wrench provided.



3-2

Install the Footrest to the Connector: Remove the screws on both sides of the footrest (as shown in 3-2), align the screw holes of the footrest and the connector, and then re-tighten the screws with allen wrench provided.

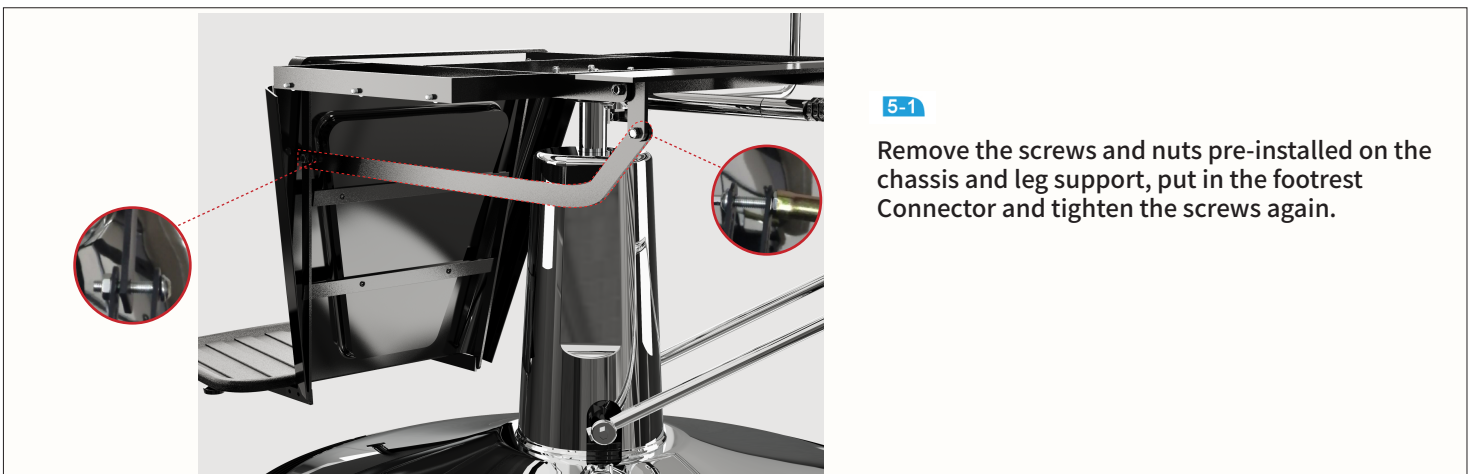
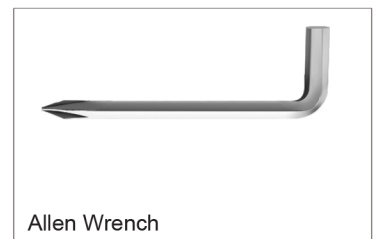
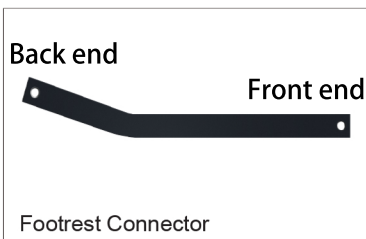
Step 4. Install the Leg Support to the Chassis

Parts you will need for this step.



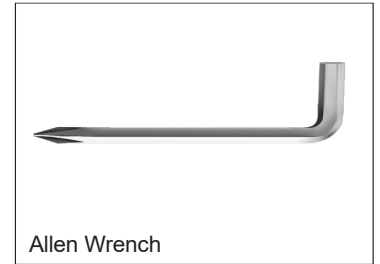
Step 5. Connect the Leg Support and Chassis

Parts you will need for this step.

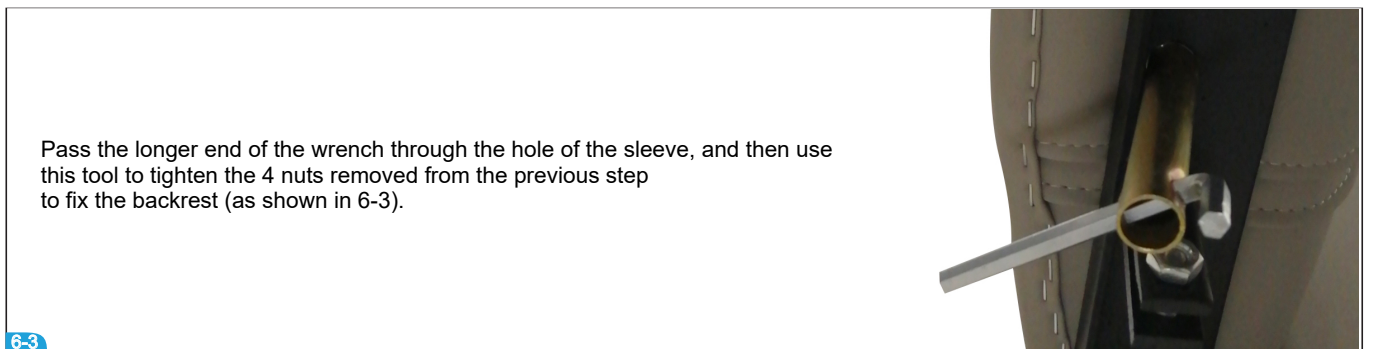


Step 6. Install the Backrest

Parts you will need for this step.



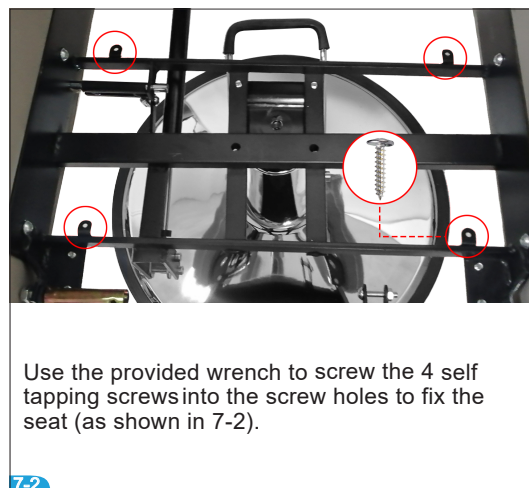
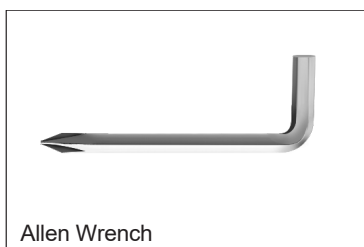
Remove the 4 nuts under the backrest, and then align the 4 screw holes on the chassis to place the backrest on the chassis (as shown in 6-2).



Pass the longer end of the wrench through the hole of the sleeve, and then use this tool to tighten the 4 nuts removed from the previous step to fix the backrest (as shown in 6-3).

Step 7. Connect the Leg Support and Chassis

Parts you will need for this step.



Use the provided wrench to screw the 4 self tapping screws into the screw holes to fix the seat (as shown in 7-2).



Installation Completed.