



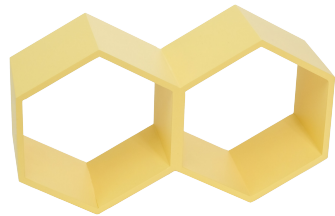
GLOBAL PRODUCTS®

EGP-HD-0463-A

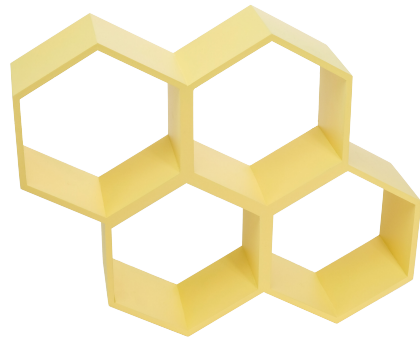
Honeycomb Toilet Paper Holder

Included in box:

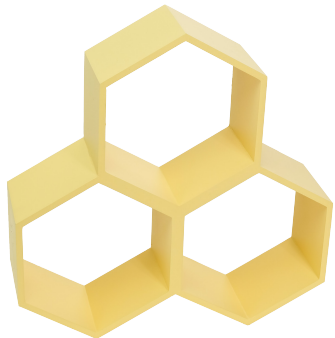
3 Wooden Clusters



Double Hexagon (X1)



Quadruple Hexagon (X1)



Triple Hexagon (X1)



6 resin bees with adhesive dots

10 Hanging Brackets with 3M adhesive dots



Tools Needed

Hammer, Pencil, and Level.



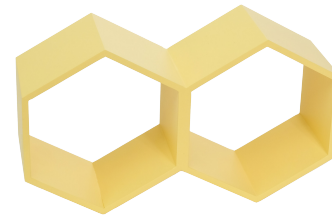
GLOBAL PRODUCTS®

EGP-HD-0463-A

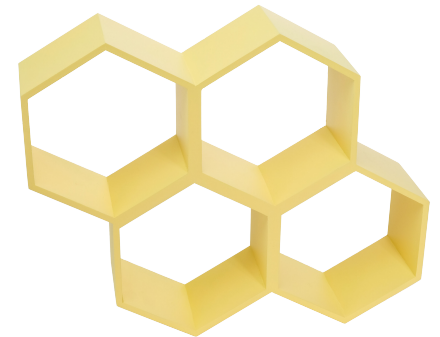
Honeycomb Toilet Paper Holder

Included in box:

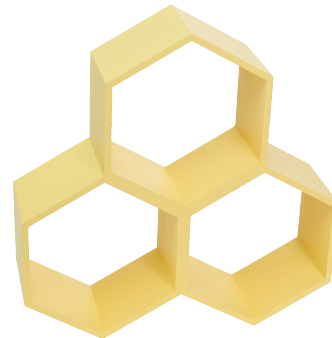
3 Wooden Clusters



Double Hexagon (X1)



Quadruple Hexagon (X1)



Triple Hexagon (X1)



6 resin bees with adhesive dots

10 Hanging Brackets with 3M adhesive dots



Tools Needed

Hammer, Pencil, and Level.

Assembly Instructions

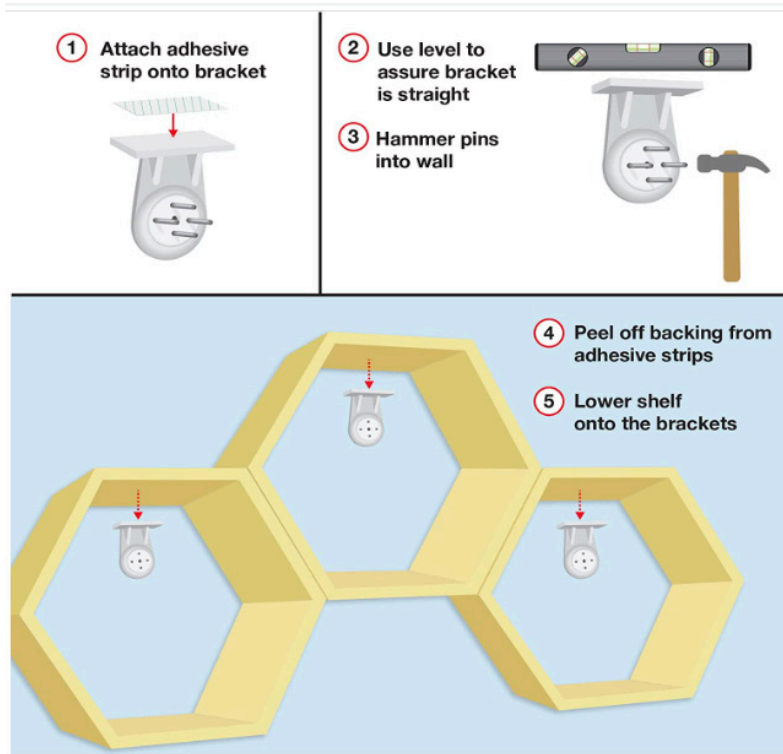
Step 1

Determine the final shape desired using the cluster shelves. Based in wall space, you can position all 3 clusters together or separate. Please use a level to position on wall.



Step 2 (Recommend 2 people)

Hold cluster(s) against the wall and make sure they are level. Mark a space with a pencil for the wall brackets. Remove cluster from wall and attach mounts to wall using a hammer per below. Apply adhesive tabs to mounts and lower cluster shelf onto brackets. Insert rolls into cluster slots.



Step 3

Add resin bees to desired location using adhesive dots.

Assembly Instructions

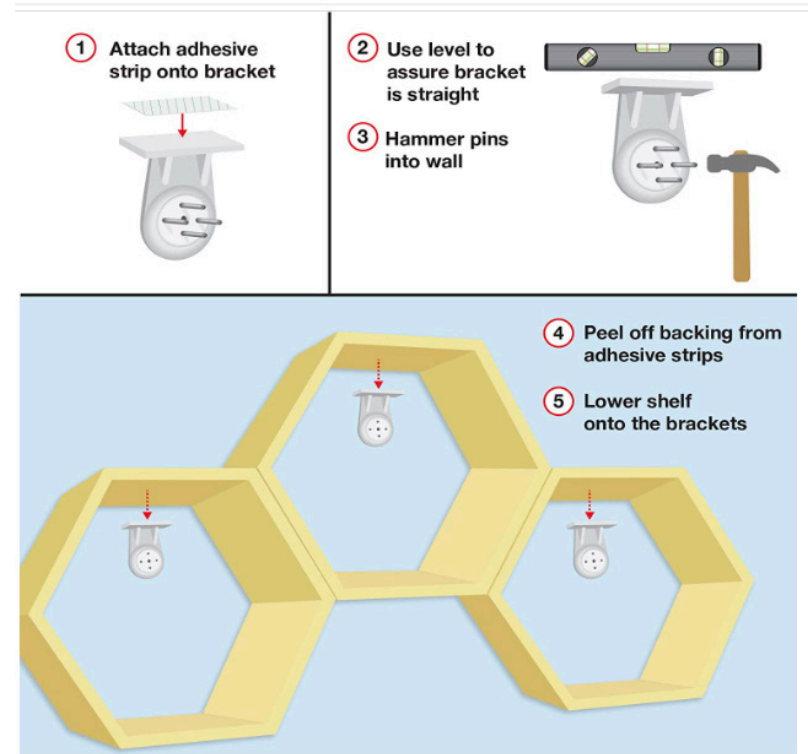
Step 1

Determine the final shape desired using the cluster shelves. Based in wall space, you can position all 3 clusters together or separate. Please use a level to position on wall.



Step 2 (Recommend 2 people)

Hold cluster(s) against the wall and make sure they are level. Mark a space with a pencil for the wall brackets. Remove cluster from wall and attach mounts to wall using a hammer per below. Apply adhesive tabs to mounts and lower cluster shelf onto brackets. Insert rolls into cluster slots.



Step 3

Add resin bees to desired location using adhesive dots.