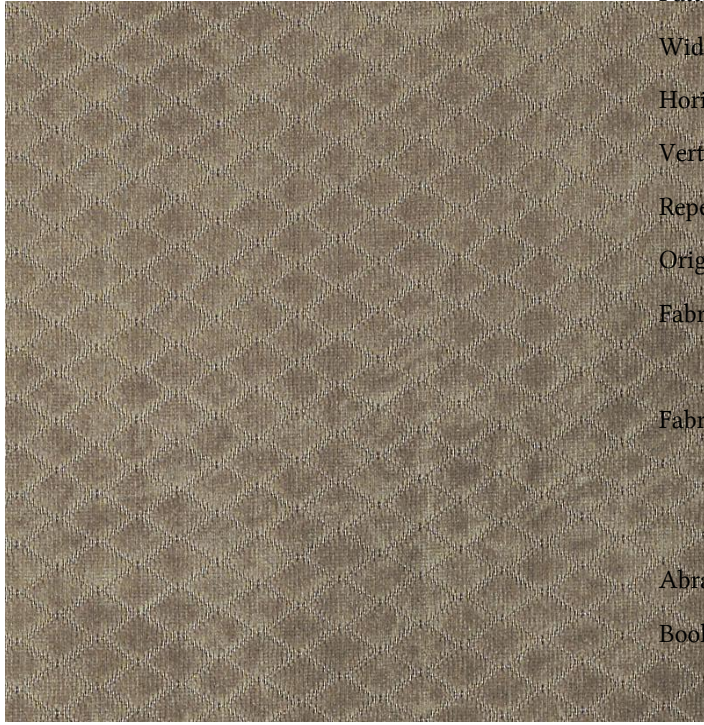




Fabric Detail for:Dv15937 | 178-driftwood



Pattern: Dv15937 | 178-driftwood
Width: 58"
Horizontal Repeat: 1.000"
Vertical Repeat: .000"
Repeat Direction: Up The Roll
Origin: China
Fabric Contents: 90% Polyester
10% Nylon
Fabric Performance: CA 117 2013
NFPA 260
UFAC - Class 1
Abrasion: 60,000 Double Rubs
Book Name: BARLEY-CORK-TRUFFLE