



**INSTALLATION  
MANUAL**  
for shower system

## Before Installing :



Please check if all accessories are included in the package.

## Product Packing List

Item	Product Name	Quantity	Unit
1	Hand Shower	1	piece
2	Shower Arm	1	piece
3	Metal Hose	1	piece
4	Washer	2	piece
5	Pipe Sealing Tape	1	piece
6	Filter Screen	1	piece
7	2-Way Diverter	1	piece
8	Installation Instruction	1	piece
9	1.75GPM Water-Saving Piece	1	piece

Instruction includes information on proper installation and maintenance. Please read the instructions carefully before installing the products. Mounting particles are included for easy installation.

Actual product might be slightly different in appearance, but same in structure. For better accuracy, please refer to the actual object.

SHOWER COMBO SET	Inclusive Parts:		
	Hand shower	Metal Hose	Accessories Package
			
	2-Way Diverter 	Shower Arm 	

## Special Features:

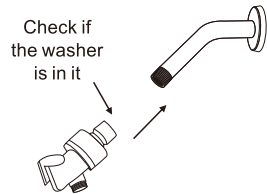
Products can be easily installed without any tools and can be done in a few simple steps.

## Installation Instructions:

- 1 Remove the existing shower head.



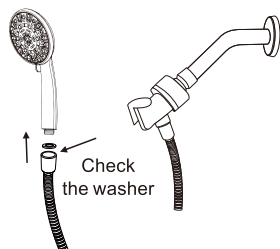
- 2 Before connecting, please make sure that a washer is in between the hex nut and the 2 way diverter. Missing a washer could cause leak.



- 3 Attach the washer and the bolt to connect the shower hose into the bracket .



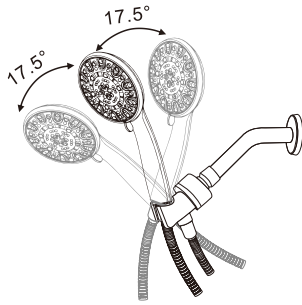
- 4 Connect the shower hose conical nut to the hand shower.



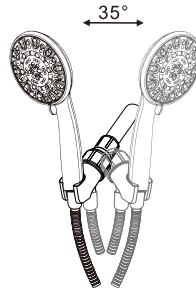
# 5

Adjust to the shower head to your desired angle.

a. Vertically



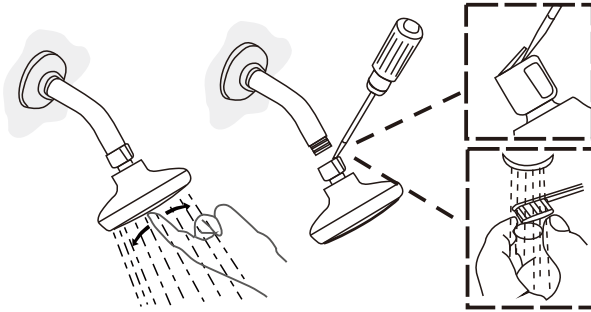
b. Horizontally



---

## **Cleaning and Maintenance:**

- Many active ingredients in cleaning agents such as ammonia, detergent powder and toilet cleaners may destroy the coating of the product. For best results, please use mild soap and dry thoroughly with a soft cloth.
- Do not use abrasive cleaning materials on LORDEAR Products.
- Please follow the steps below if you experience dirt blocking the flow of the water after some time.



- a. Turn on the water and poke the holes with your fingers to gently loosen minerals and release any remaining sediments.
- b. Turn off the water, remove the shower head and remove the mesh washer inside to clean with a small brush.