

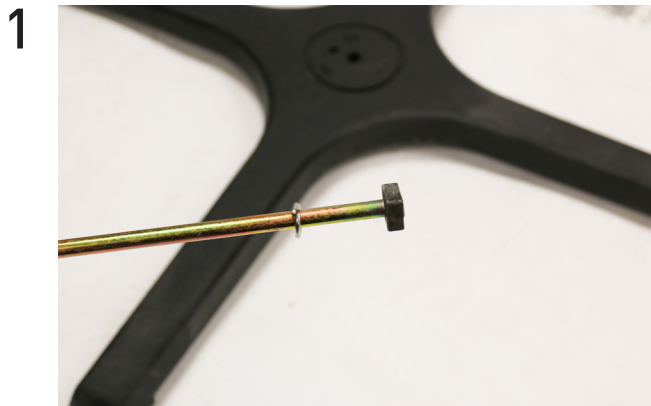
ASBURY TABLETOP 900 SERIES BASE WITH CUSTOM SPIDER

PARTS LIST

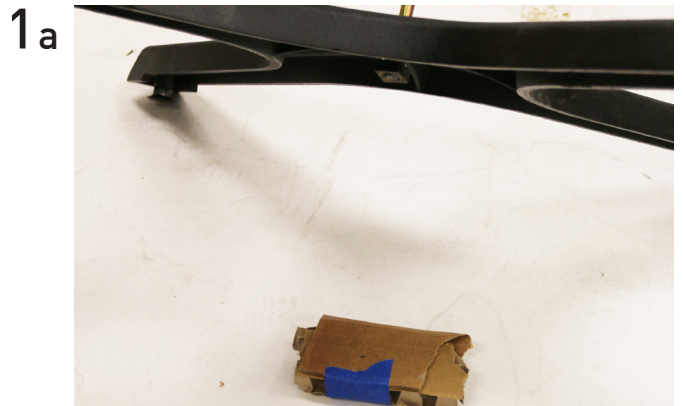
- (1) Spider
- (1) Base
- (1) Tie Rod w/ washer and 18mm nut
- (1) Column
- (1) Tabletop
- (4) 10mm bolts w/ washer

TOOLS LIST

- 18mm Socket Wrench
- 10mm Socket Wrench
- Adjustable Wrench



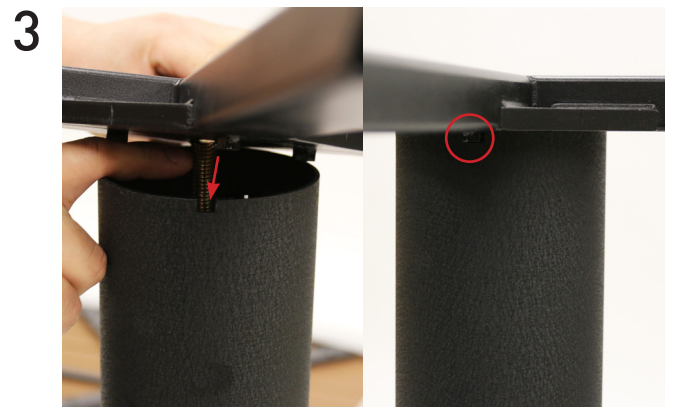
BEGIN BY REMOVING NUT FROM THE TIE ROD THREADS AND SLIDE THE BASE OVER THE WASHER AND BOTTOM OF TIE ROD. THREADS ON TIE ROD SHOULD BE ON TOP



TO MAKE SURE TIE ROD STICKS THROUGH SPIDER, SUPPORT IT WITH EITHER CARDBOARD OR RAG FROM UNDER THE BASE

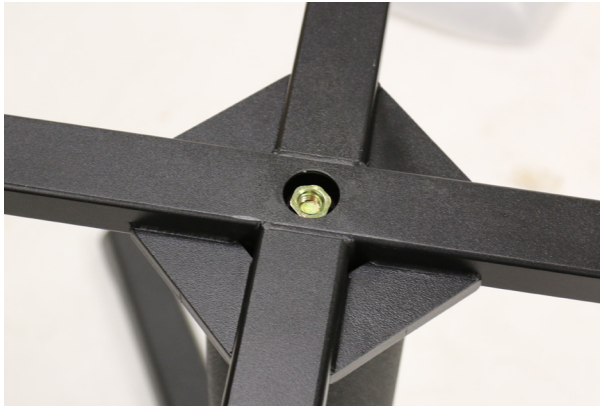


SLIDE COLUMN OVER BASE AND TIE ROD



PLACE SPIDER ONTO COLUMN AND TIE ROD. MAKE SURE THE NOTCH ON THE SPIDER FITS INTO THE GROOVE ON THE COLUMN TO SECURE IT.

4



PLACE 18MM NUT ONTO THREADS OF THE TIE ROD AND TIGHTEN WITH SOCKET WRENCH.

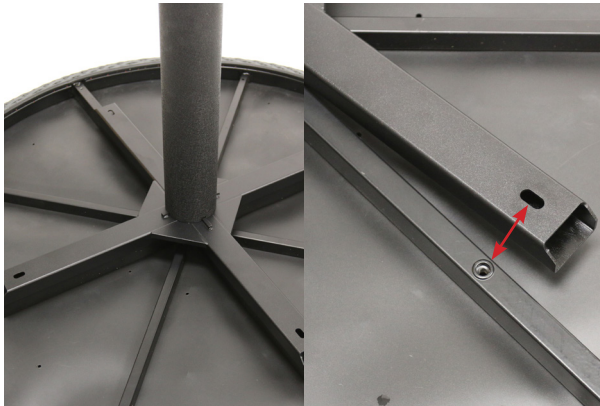
(2 PEOPLE ARE RECOMMENDED FOR THIS STEP)

5



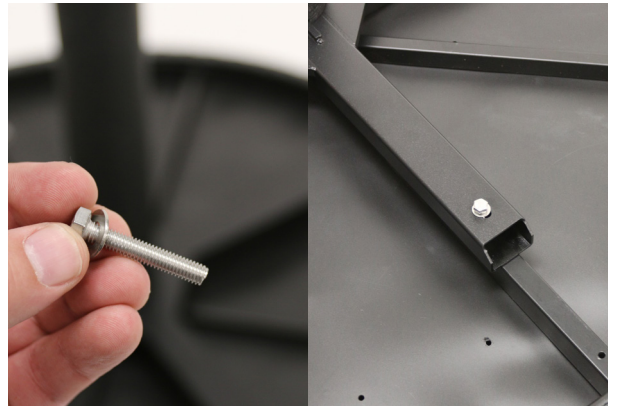
TO FULLY TIGHTEN LAY THE BASE ON ITS SIDE AND HOLD ADJUSTABLE WRENCH ON BOTTOM WITH SOCKET WRENCH ON THE TOP TO FULLY TIGHTEN.

6



PLACE FINISHED BASE UPSIDE DOWN ONTO BOTTOM OF TABLE TOP AND ALIGN THE SPIDER TO PRE-DRILLED HOLES IN TABLE TOP FRAME

7



PLACE ALL BOLTS AND WASHERS INTO PRE-DRILLED HOLES AND FINGER TIGHTEN.

8



FULLY TIGHTEN ALL BOLTS WITH 10 MM SOCKET WRENCH.