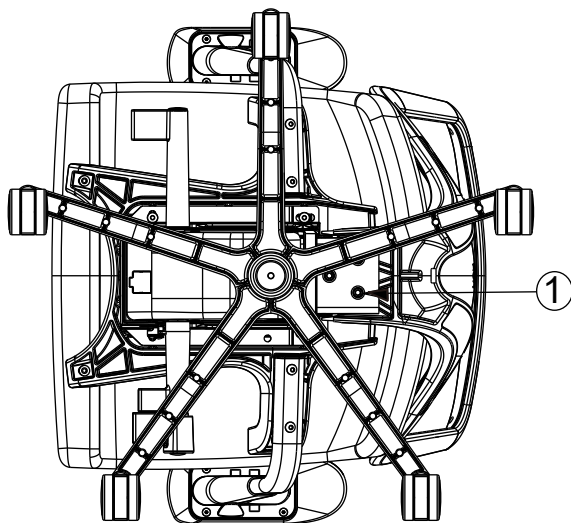
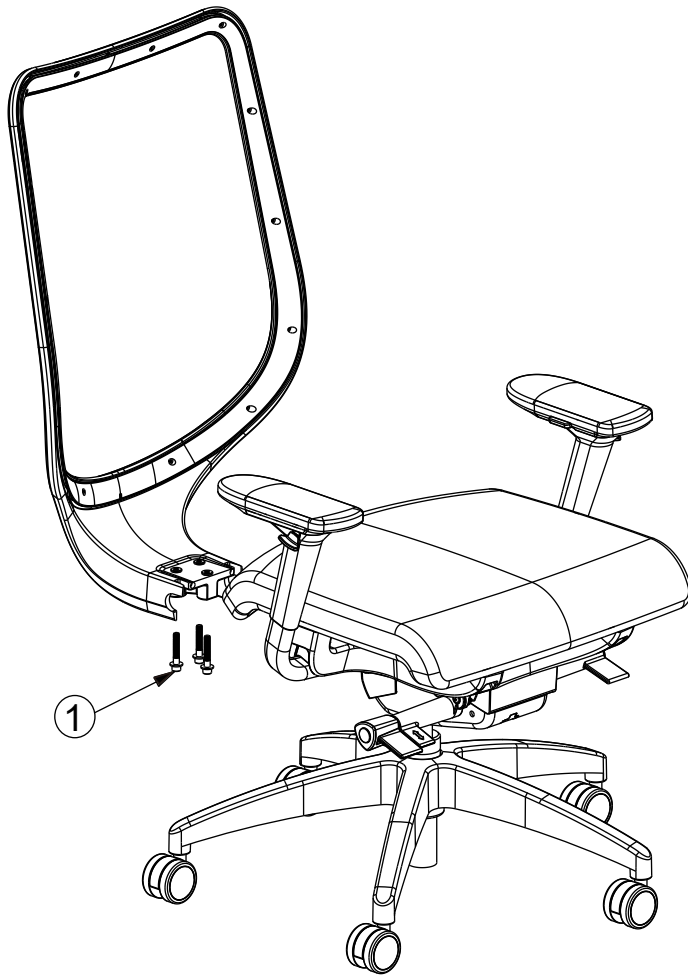


## NUCLEUS MESH BACK REPLACEMENT INSTRUCTIONS

TOOLS REQUIRED:  
SAFETY GLASSES  
GLOVES  
1/4" ALLEN WRNECH OR POWER TOOL  
09304770XX REPLACEMENT PART



BASE SIDE UP - VIEW

### INSTRUCTIONS:

1. USE 1/4" ALLEN WRENCH OR POWER TOOL TO REMOVE BACK BOLTS, AS SHOWN IN ITEM 1. CHAIR WILL NEED TO BE RESTING ON A WORK SURFACE TO ORIENT THE UNIT BASE SIDE UP TO ACCESS THE BOLTS.
2. REMOVE (3) BOLTS FROM BACK UPRIGHT ON EXISTING BACK ASSEMBLY FROM CHAIR UNIT.
3. ALIGN BACK ASSEMBLY REPLACEMENT TO CONTROL, USING BOLT HOLES ON BACK UPRIGHT AND CONTROL FOR ALIGNMENT.
4. PLACE BOLTS INTO CONTROL HOLES AND THREAD INTO BACK UPRIGHT.
5. INSTALL BOLTS WITH 1/4" ALLEN WRENCH OR POWER TOOL, APPLYING 120 IN-LBS OF TORQUE.