

## USE AND MAINTENANCE

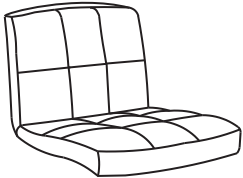
Use on level surfaces only

Because this product needs assembly, it is prone to working itself loose from time to time depending on the use. Please take the time to check that all connections are still tight and working properly

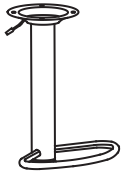
Only clean using a damp cloth and mild detergent, do not use bleach or abrasive cleaners.

# Adjustable Swivel Leather Barstool

## PART LIST



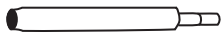
1 - Chair Seat x1



2 - Chair Support x1



3 - Chair Base x1



4 - Internal Support For Chair x1



5 - Chair Connector x1

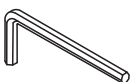
## HARDWARE



A - Bolt x 4

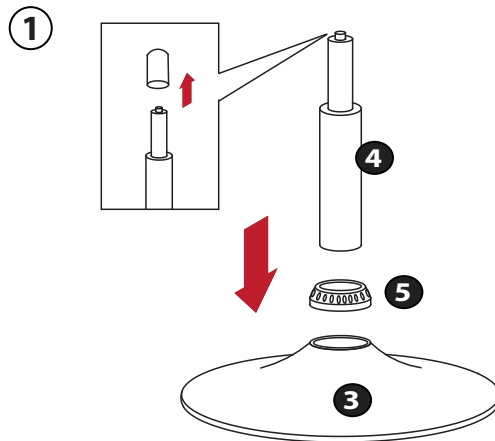


B - Bolt Ring x 4

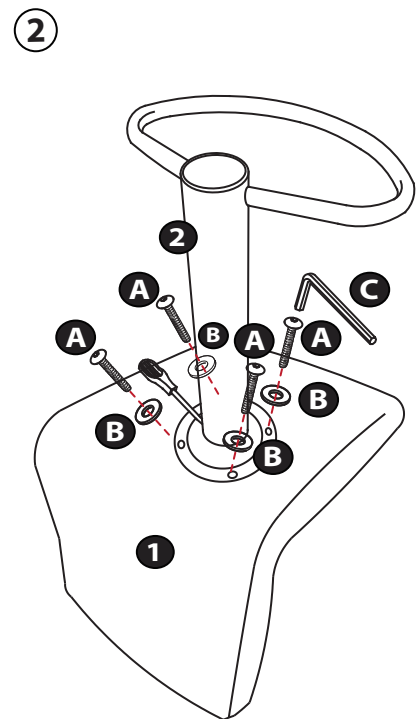


C - Hex Screwdriver x 1

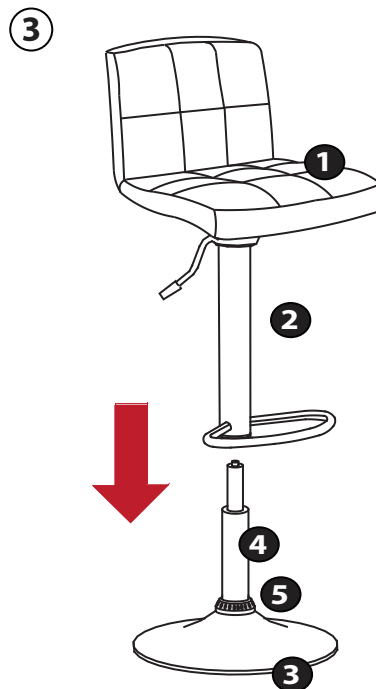
## Assembly Instructions



1. Open the cover of 4. Insert 4 into 5 into 3.



2. Insert 2 into 1 with A x 4 and B x 4.



3. Insert 1 and 2 into 3, 4 and 5.

Congratulations! Setup of your new Adjustable Swivel Leather Barstool is Complete!

