



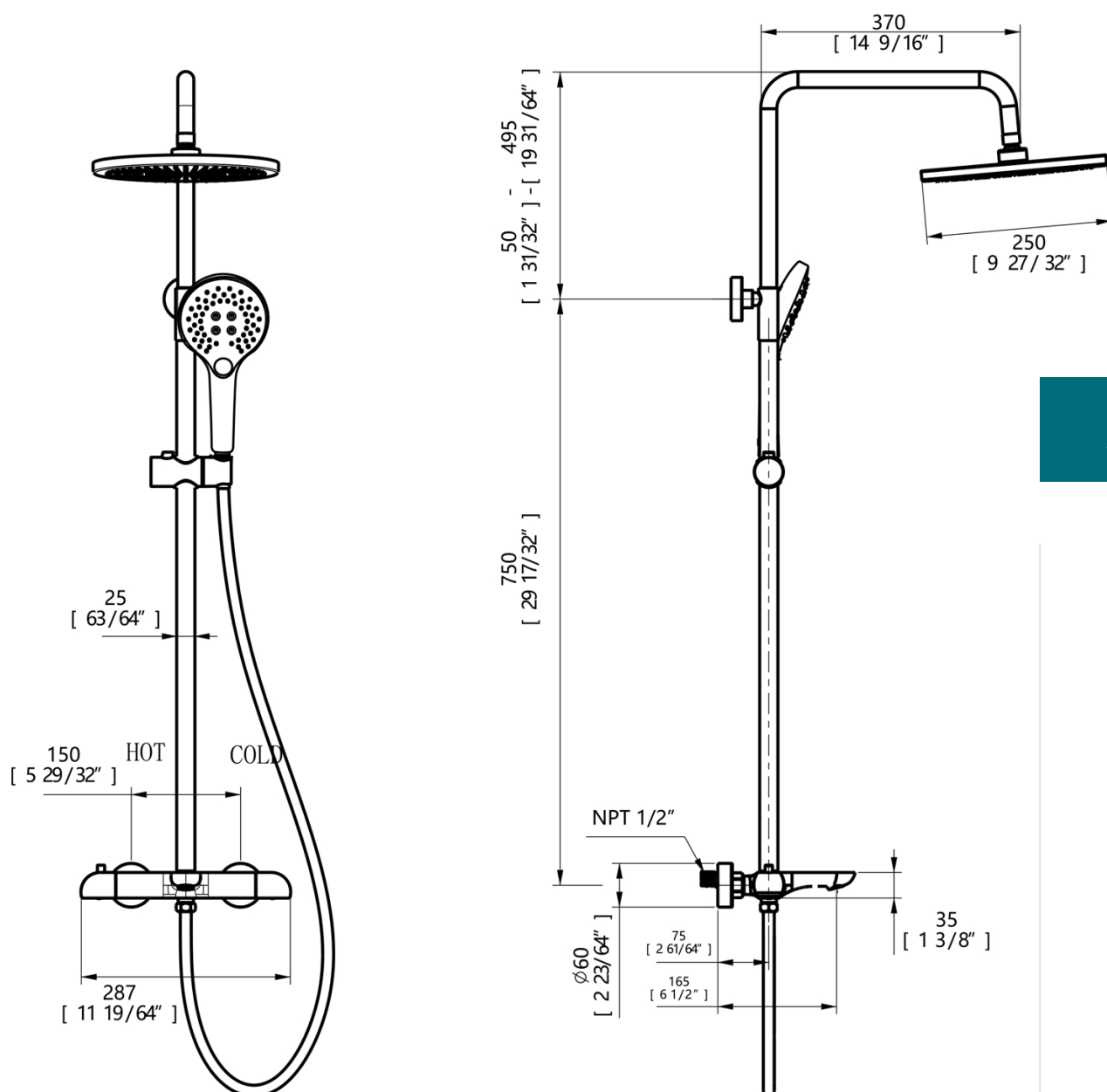
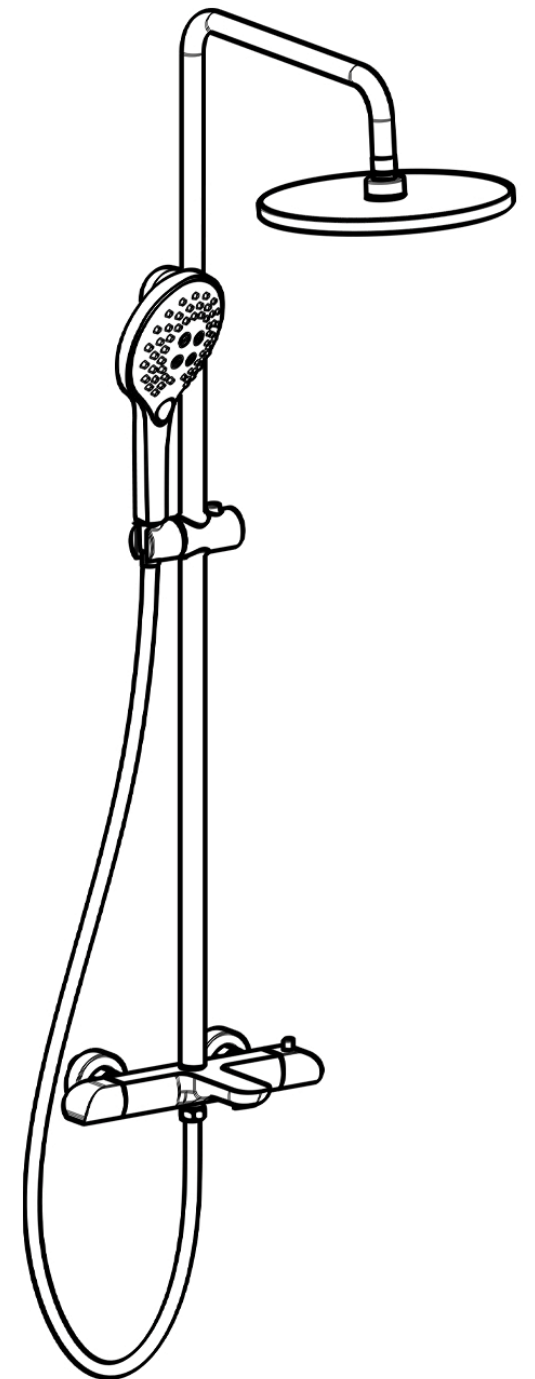
AQUADOM ZEN

THREE-FUNCTION ROUND THERMOSTATIC EXPOSED SHOWER SYSTEM

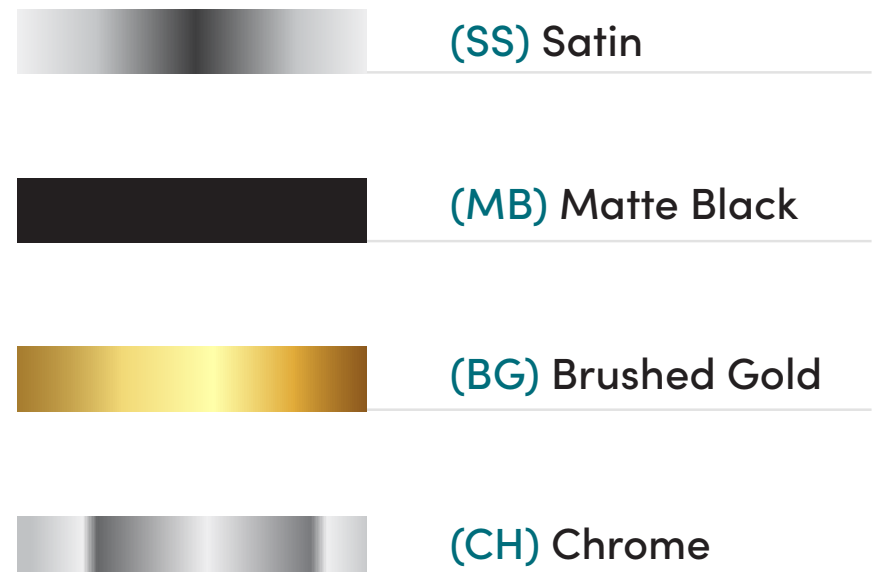


PRODUCT DESCRIPTION:

- Exposed thermostat Brass shower valve body, with bathtub spout
- Thermostatic cartridge(Vernet), 100°F
- Safety stop at 100 degrees Fahrenheit
- Outlets controlled via turning handle, will not run 3 outlets at samtime
- Height-adjustable handshower holder
- Handshower 3 function: SoftRain, IntenseRain, Massage spray
- Height Adjustable Rain Shower Head
- Round Single Function Rain Shower Head, SUS304 10"x10", 1/5" thick
- Twistfree to prevent 59" Stainless steel shower hose, from twisting
- Finish: chrome, brushed nickel, matte black, brushed gold
- Maximum flow rate restrictionsis 1.8 GPM for NY, NJ, CO, HI, OR, VT, WA, MD, MA, RI, LA,
- Maximum flow rate NOT restrictionsis 2.5 GPM



ANY VARIATION IS AVAILABLE IN 4 FINISHES:



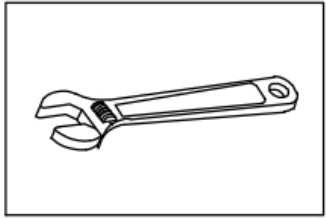
NOTE:

Dimensions are for reference only.
Detailed information is in accordance with the final product.

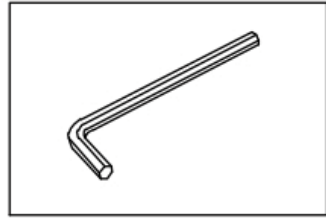


INSTALLATION MANUAL

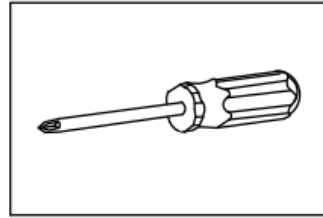
Tools You Will Need: _____



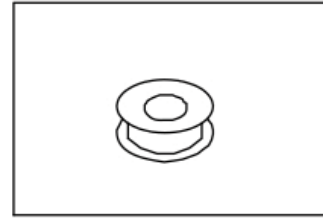
Adjustable wrench



Hexagon wrench



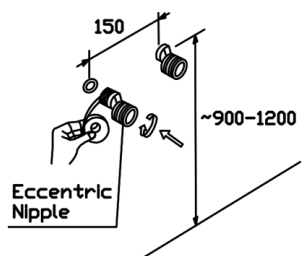
Philips Screwdriver



Pipe Tape

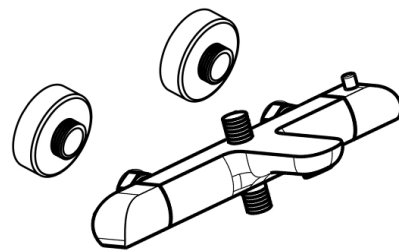
NOTES BEFORE INSTALLATION :

- ①. Please check that all components are present.
- ②. Before installation ensure that all feed lines are clear of debris and on/off valve is present.
- ③. Pictures in the manual are general in content and may not represent exactly your purchased faucet. If you are having difficulties please contact a professional plumber.
- ④. If you will be away from home for an extended period you should shut off the main water supply.
- ⑤. The hot water supply should be connected to the left and the cold water supply to the right, when viewed from the operating position. If this is not taken into account can cause permanent damage to the cartridge.
- ⑥. Supply lines should be purged to clean impurities before connecting the unit.



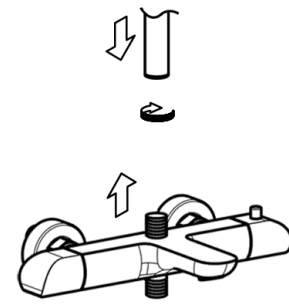
STEP 1

As shown, install the accessories and attach the tape.



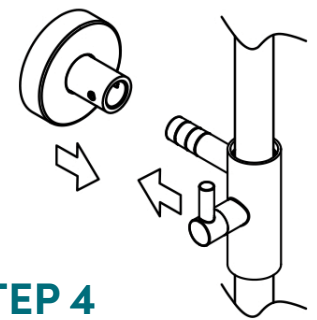
STEP 2

Install the main body and rubber pad.



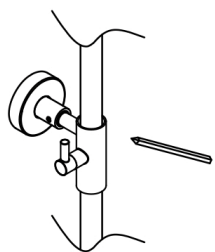
STEP 3

Install the riser in the faucet.



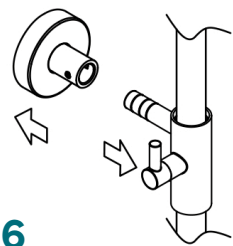
STEP 4

Install the mounting piece on the shower arm.



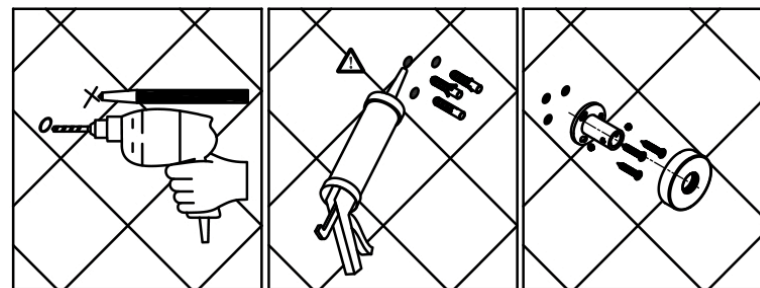
STEP 5

Makesure the riser is level, mark the position of the screw holes.



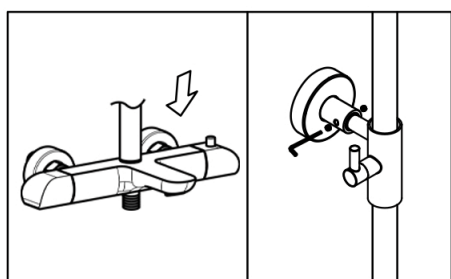
STEP 6

Remove the riser and the mounting piece.



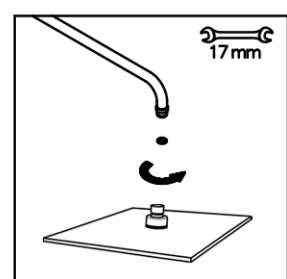
STEP 7

Drill the screw holes and install the anchors. Install the mounting piece and mounting piece seal.



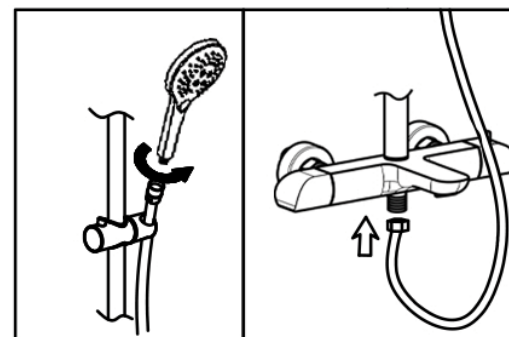
STEP 8

Install the riser on the faucet, tighten the screw.



STEP 9

Install the shower rain head.



STEP 10

Place the hose washer in the short hose end connection. Connect this end of the hose to the faucet. Place the screen washer in the long hose end connection. Install the handshower on this end of the hose. Rest the handshower in the holder.