



10 : 00

estimated assembly



2 or more

people required

Ok, let's
get started!



- Put on mood music!
- To prevent damage to product, use the clean side of package carton or rug as working surface.
- In the event of missing or damaged parts, delivery problems etc., please reach out to our team.
We will be happy to fix the problem!

care guide

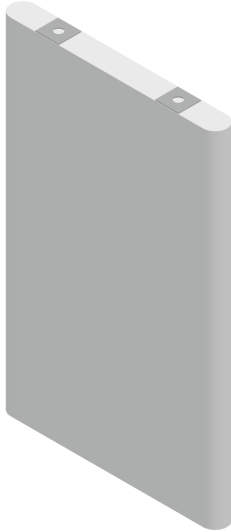
- Clean regularly with a soft and dry cloth.
- To protect finish, avoid use of abrasive cleaners.
- Wipe up spills immediately. Please!



product parts



A
Table Top
x1



(B)
Table legs
x1



(C)
Table legs
x2

what's included



(D)- Metal Plate
x6 Pcs



(E)- Bolt
(8x25)
X6 Pcs



(F)- Bolt
(8 x 20)
x12 Pcs



(G)- Washer
(8X20)
x12 Pcs



(H)- Allen Key
(5mm)
x1 Pc

YS

Yellow sticker

GS

Green sticker

RS

Red sticker

assembly instructions

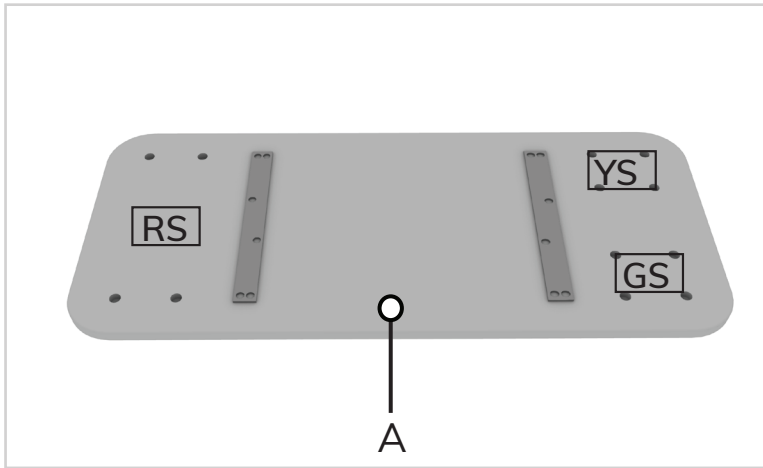
Friendly Tip: Take a deep breath going in. This may be a tricky part, but nothing too overwhelming. Just follow these steps to the T and the outcome will be worth it!



- ⓘ While assembling the product, tighten the bolts up to 50%. Once all parts are in place, only then fully tighten the bolts.

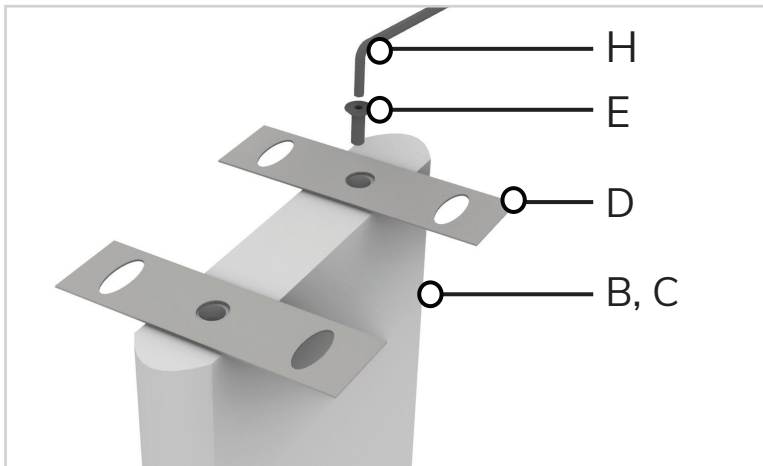
step 1:

Start by placing the tabletop (A) upside down on a flat surface.



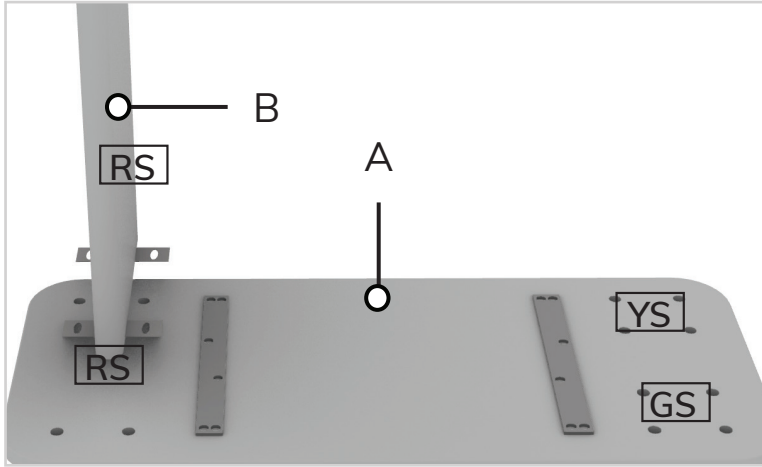
step 2:

Then, using the image below as a reference, take the table leg (B) and align the middle slots of metal plates (D) with the slots on the top of the leg (B). Fix it in place by inserting bolts (E) and tightening them using allen key (H). Repeat the same with legs (C).



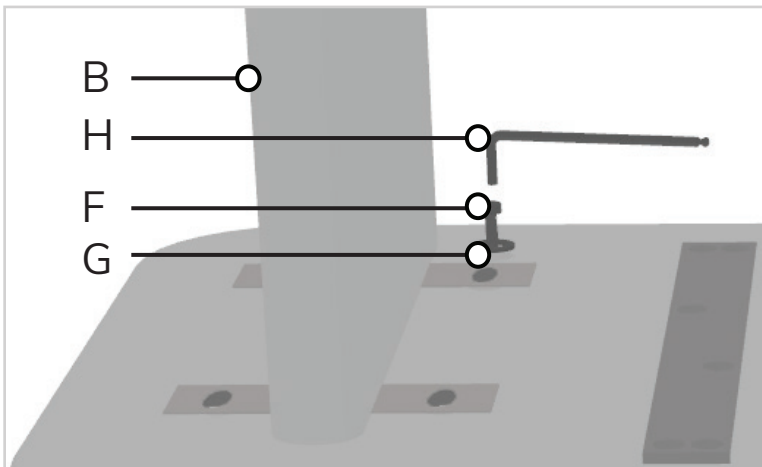
step 3:

Align the legs to the hole on the table top (A) as the reference image shows below.



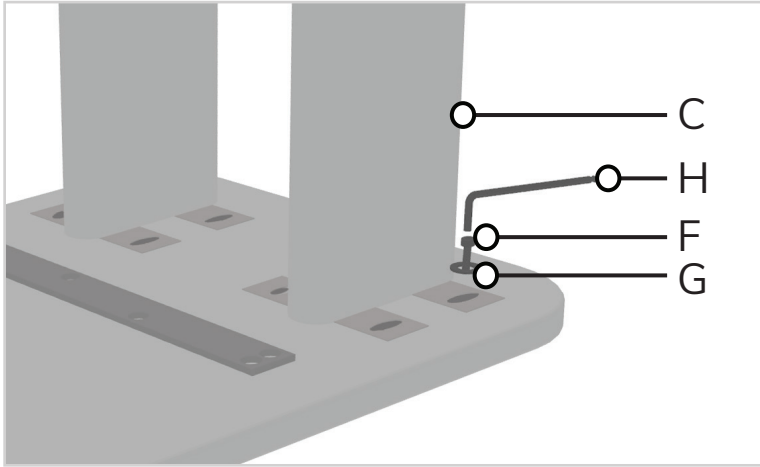
step 4:

Attach the leg (B) in place by inserting plain washer (G) and bolts (F) in the given slots. Tighten the bolts up to 50% using allen key (H).



step 5:

Repeat steps 3 & 4 with the remaining legs (C). Make sure that both legs are straight aligned and matches stickers (YS & GS) with stickers on top & then tighten all the bolts 100%.



step 6:

Turn it into an upright position and If required, adjust the levellers according to the floor.

