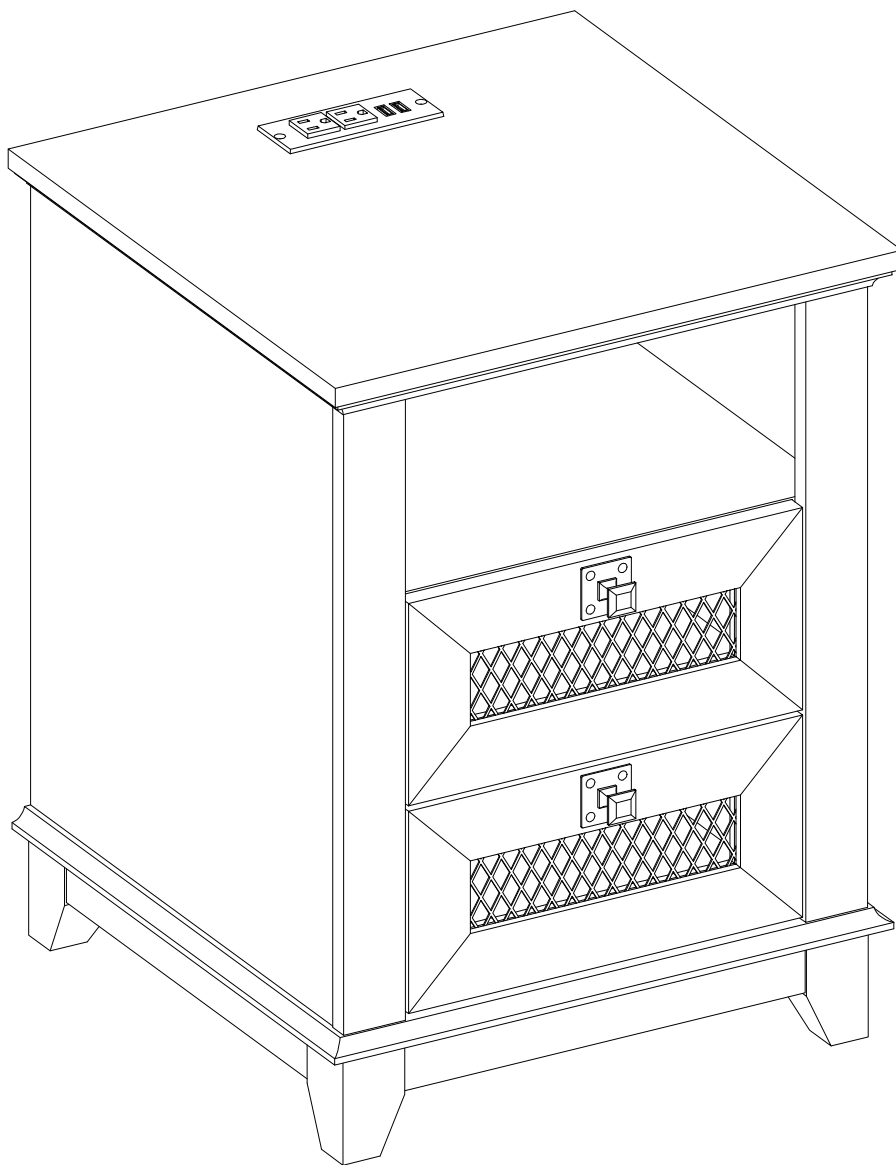


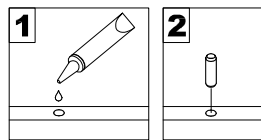
AI-MBDC18ST

Assembly Instructions

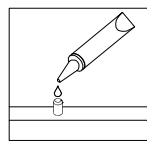


General Assembly Guidelines

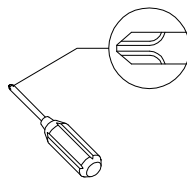
- I. Ensure that all parts and hardware are available before beginning assembly.
- II. Follow each step carefully to ensure the proper assembly of this product.
- III. Two people are recommended for ease in the assembly of this product.
- IV. The three main types of hardware used to assemble this product are : wood dowels , screws and bolts.
- V. The provided glue is to secure wood dowels in place . When first inserting dowels , locate the appropriate hole for the dowel , place a small amount of glue in the hole and insert the dowel . Wipe away excess glue immediately.



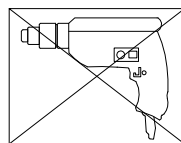
In future assembly steps when dowels are necessary to attach assembly parts together , place a small amount of glue on the end of the dowel before attaching parts together . Wipe away excess glue immediately.



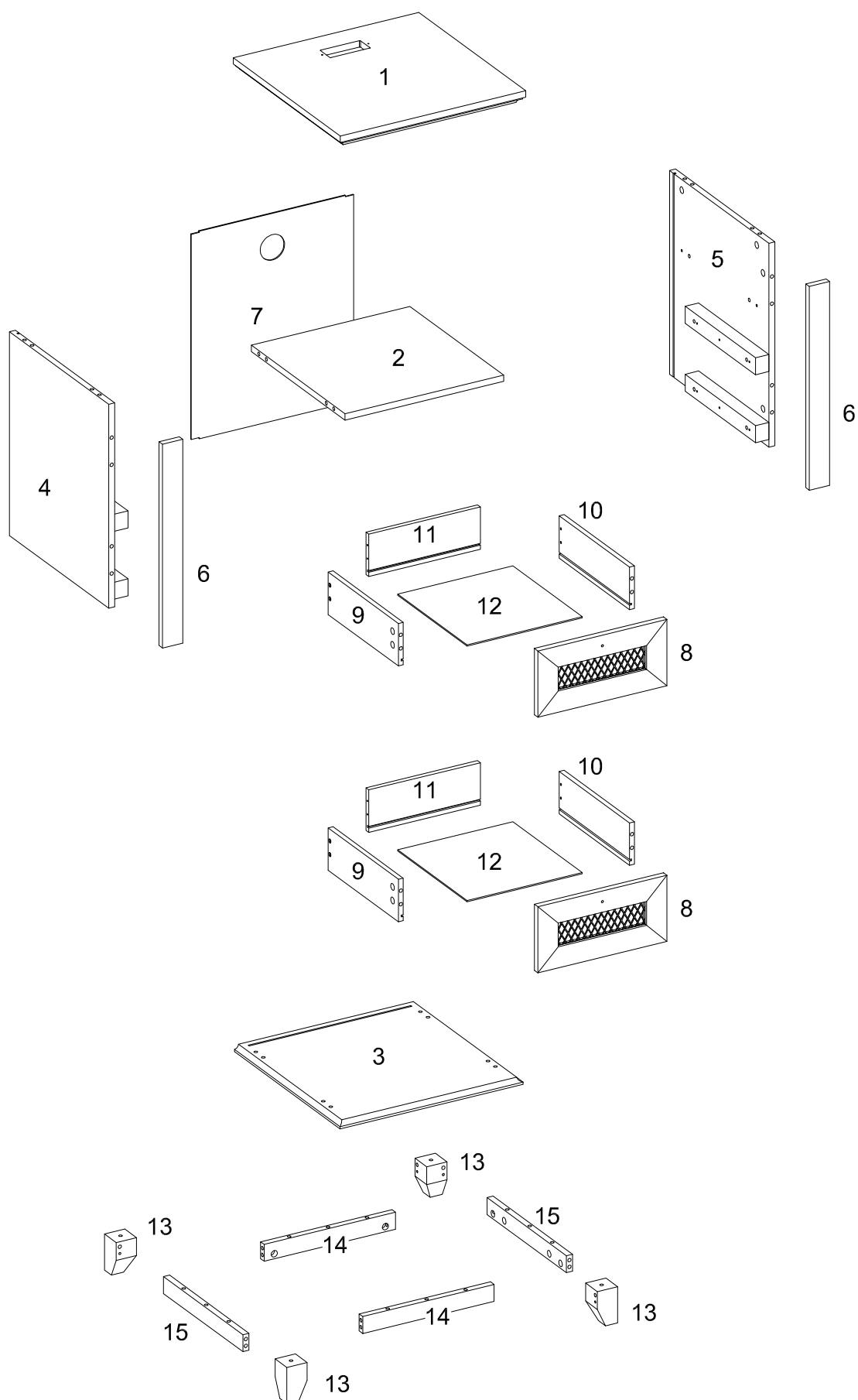
- VI. A Phillips head screwdriver is required for the assembly of this product .




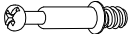


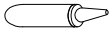
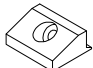
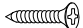

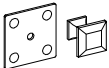


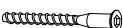
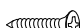
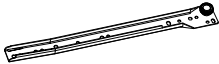

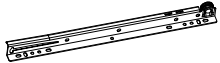
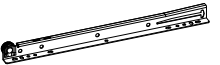
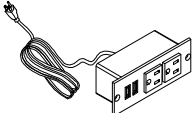

- VII. Power tools should not be used to assemble this product .

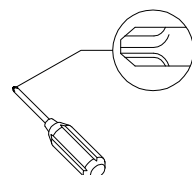


Parts List



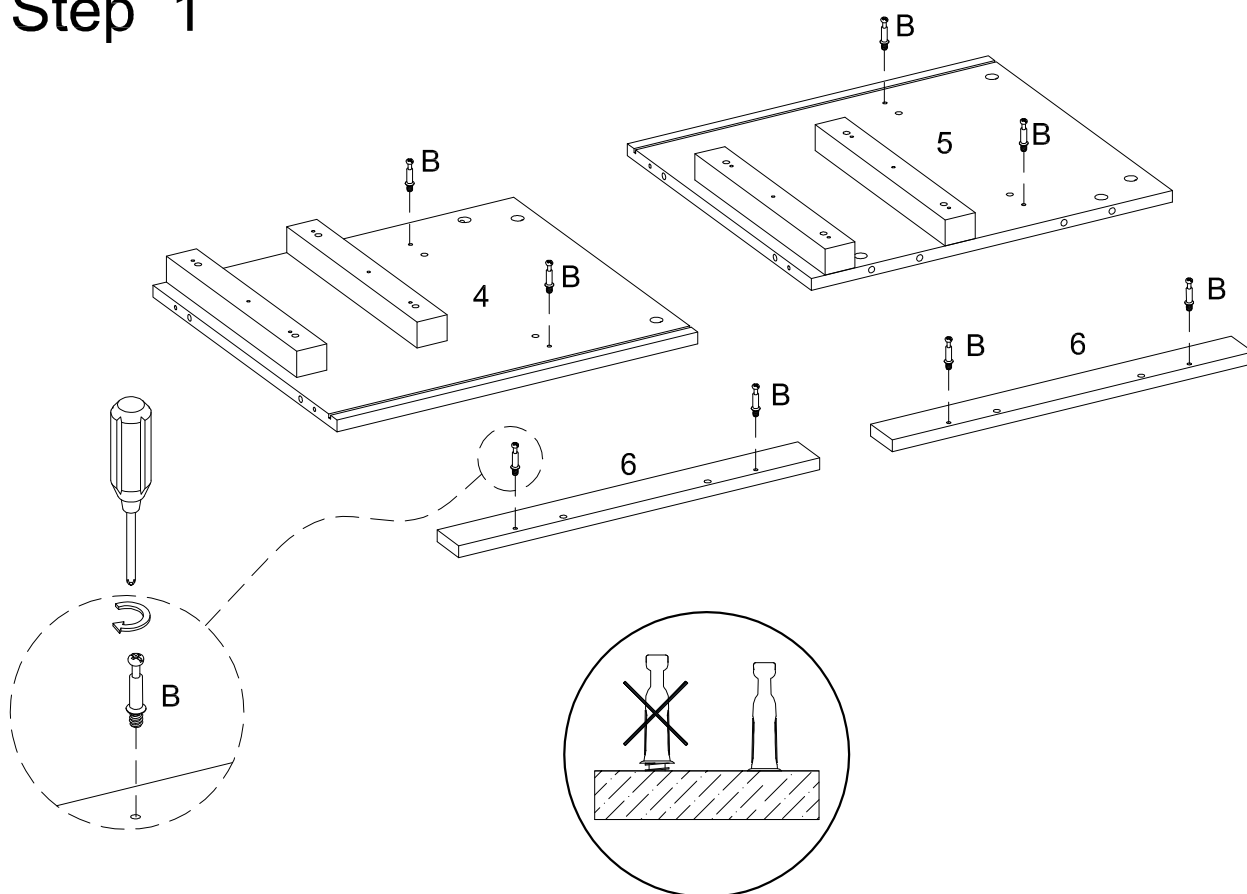
Hardware List

A		Ø8x30mm	Wooden dowel	32 pcs
B		Ø6x35mm	Cam bolt	36 pcs
C		Ø15x11mm	Cam lock	28 pcs
D		Ø30mm	Sticker	36 pcs
E			Glue tube	1 pc
F			Plastic wedge	4 pcs
G		Ø3x17mm	Flat-head screw	4 pcs
H		Ø4x22mm	Handle bolt	2 pcs
J			Handle	2 pcs
K		Ø15x9.5mm	Cam lock	8 pcs
L		Ø4x38mm	Screw	8 pcs
M		Ø6x50mm	Screw	4 pcs
N		Ø3.5x12mm	Screw	26 pcs
P		12"	Left cabinet member	2 pcs
Q		12"	Right cabinet member	2 pcs
R		12"	Left drawer runner	2 pcs
S		12"	Right drawer runner	2 pcs
T			USB Interface	1 pcs
U		M 4	Hexagon socket key	1 pcs

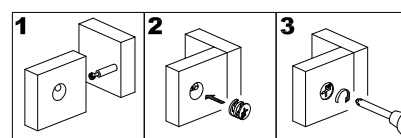
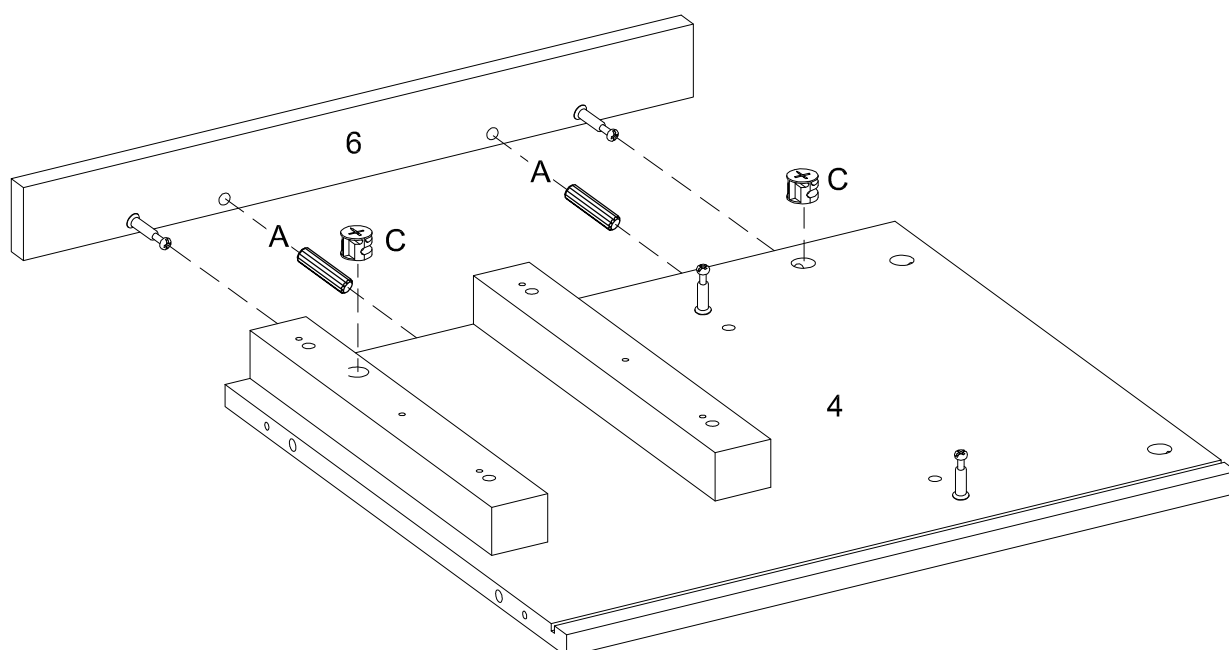


Philips head screwdriver required for assembly
(not included)

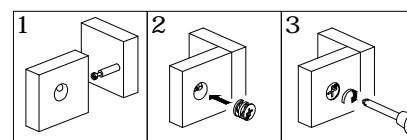
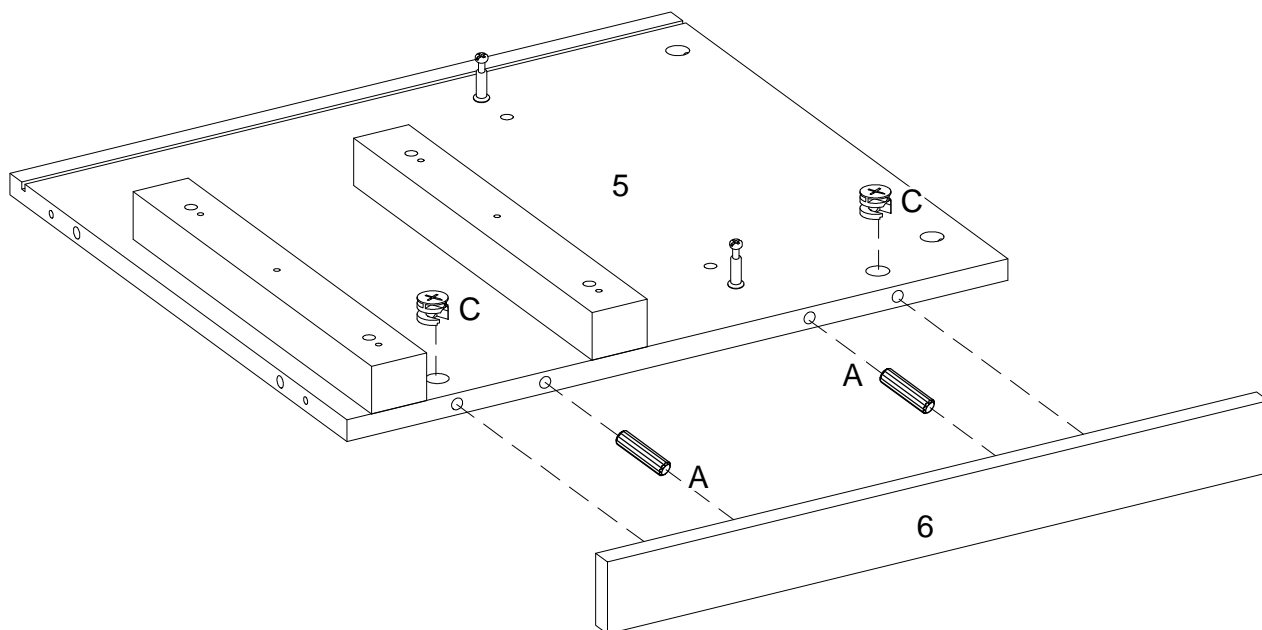
Step 1



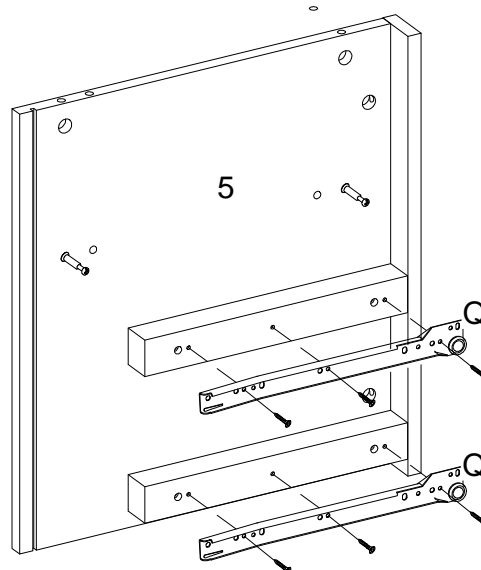
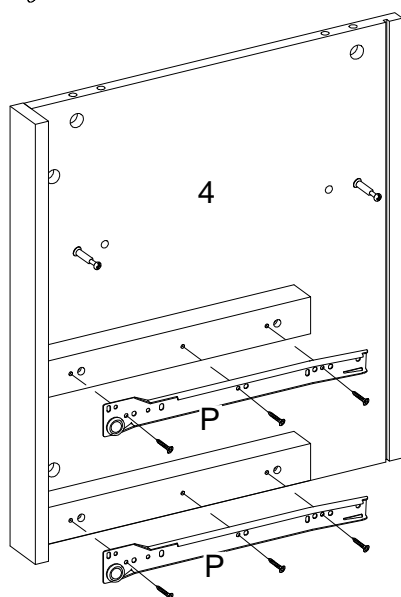
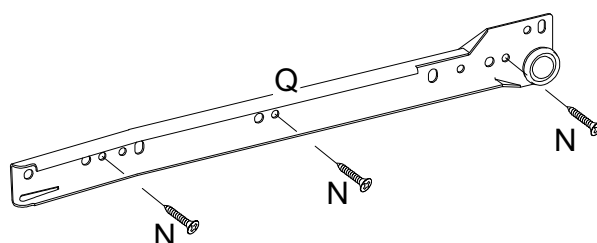
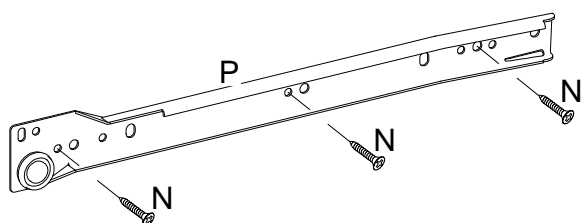
Step 2



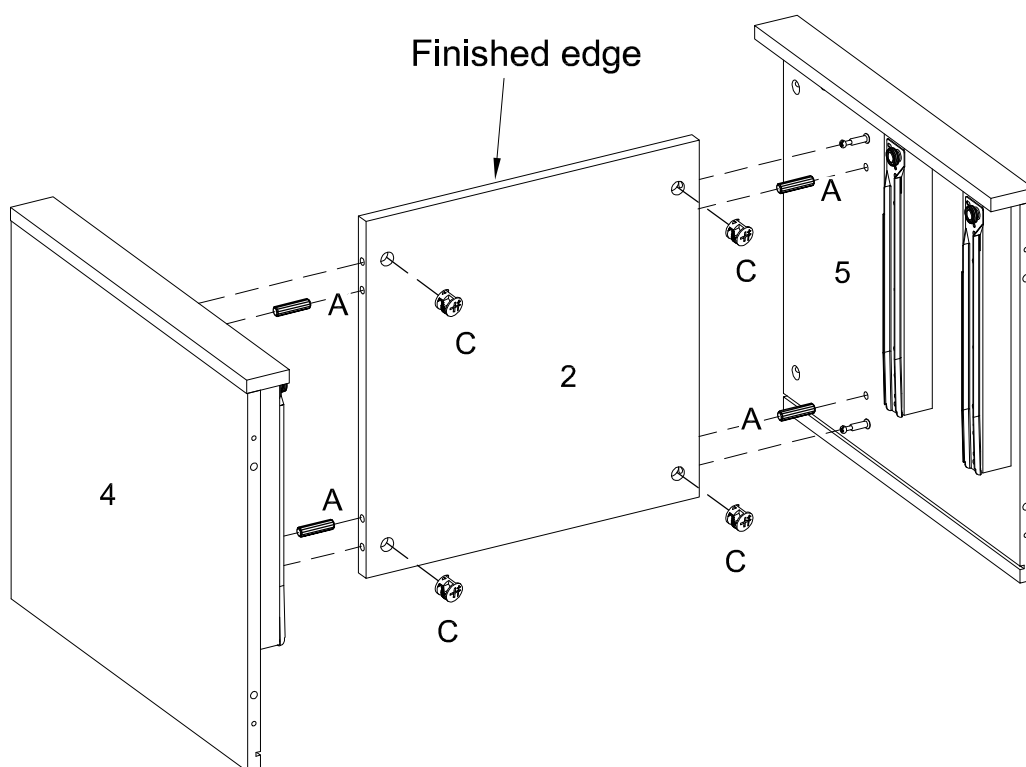
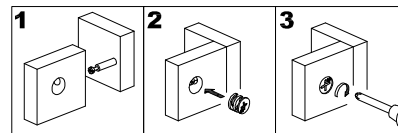
Step 3



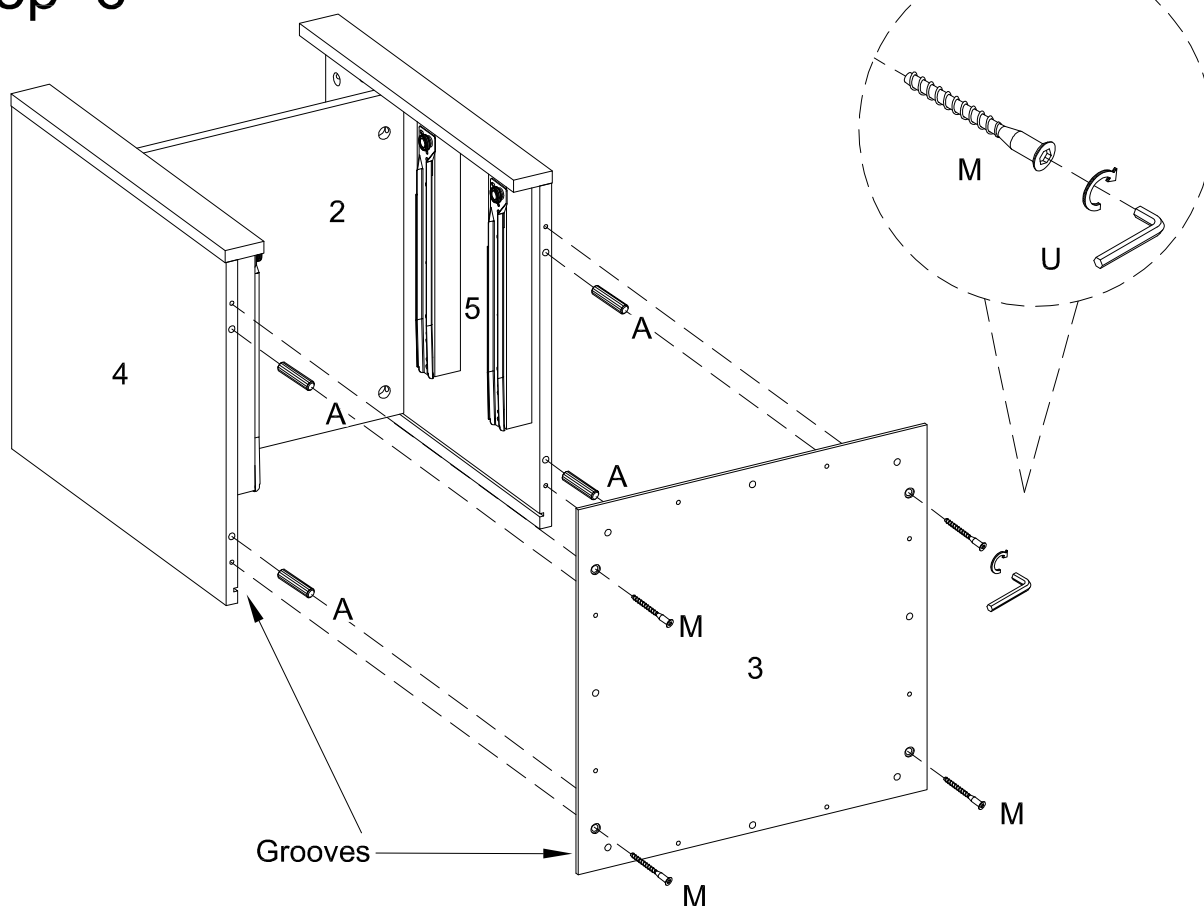
Step 4



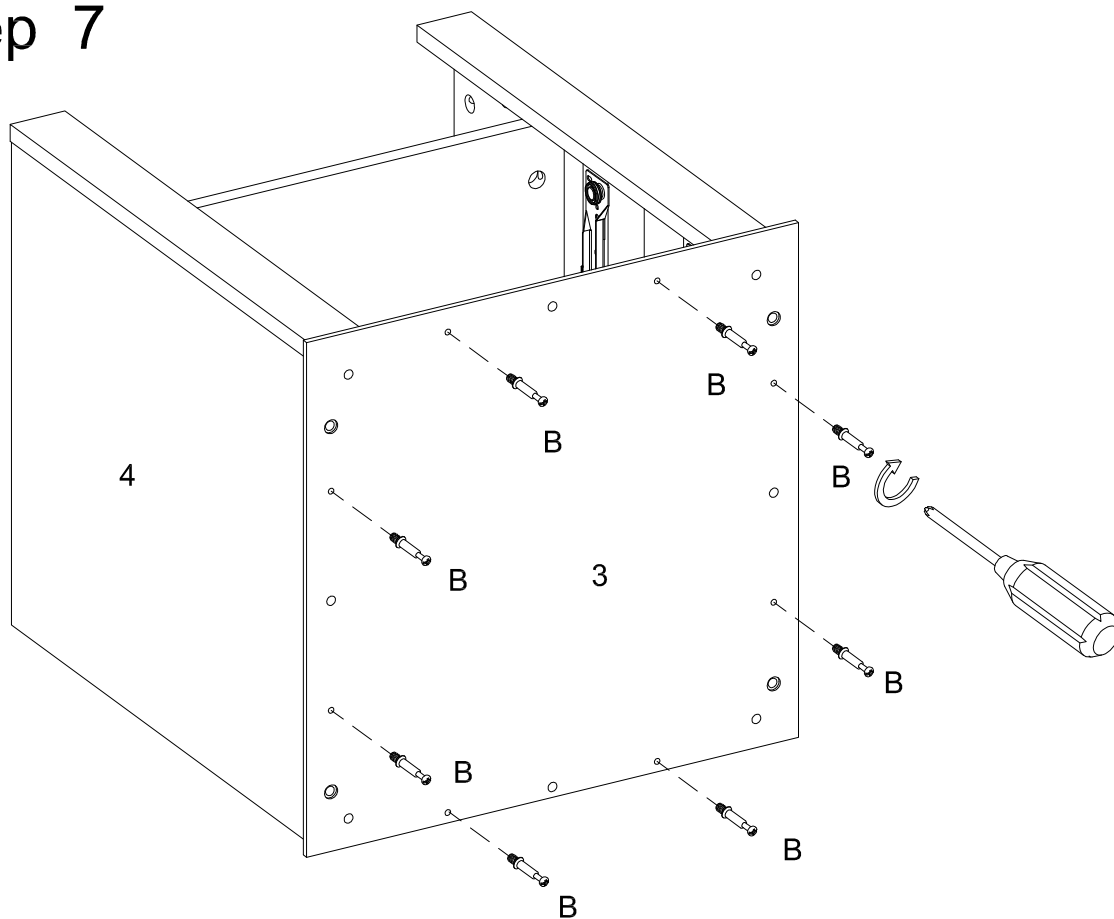
Step 5



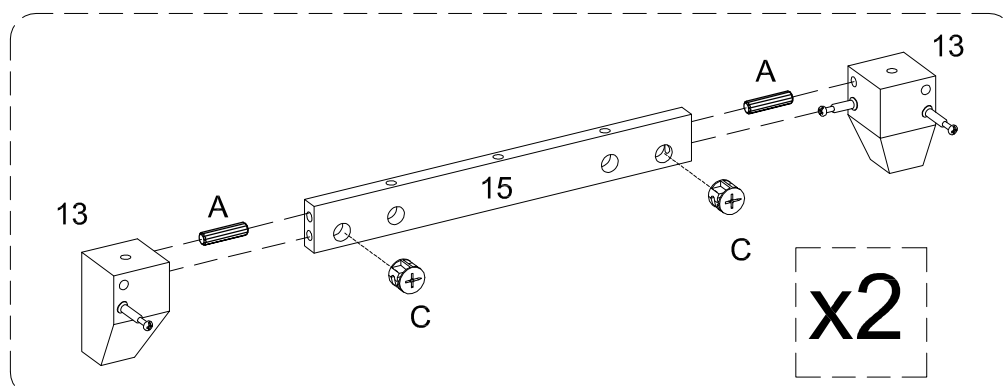
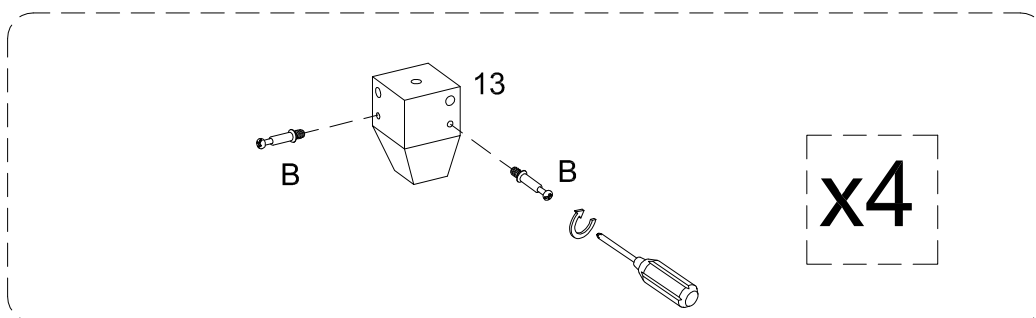
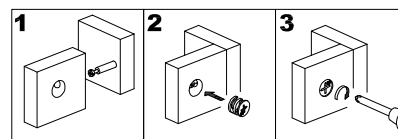
Step 6



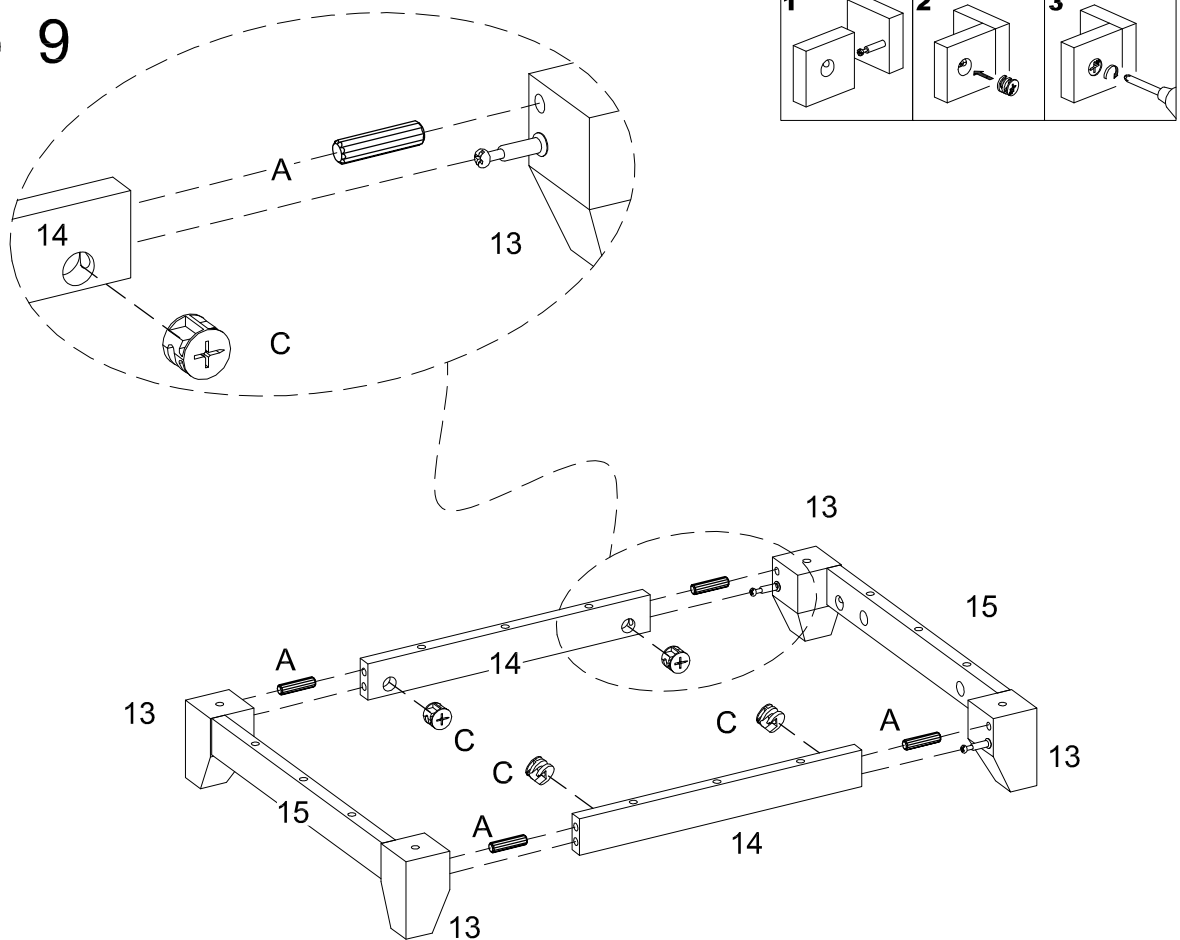
Step 7



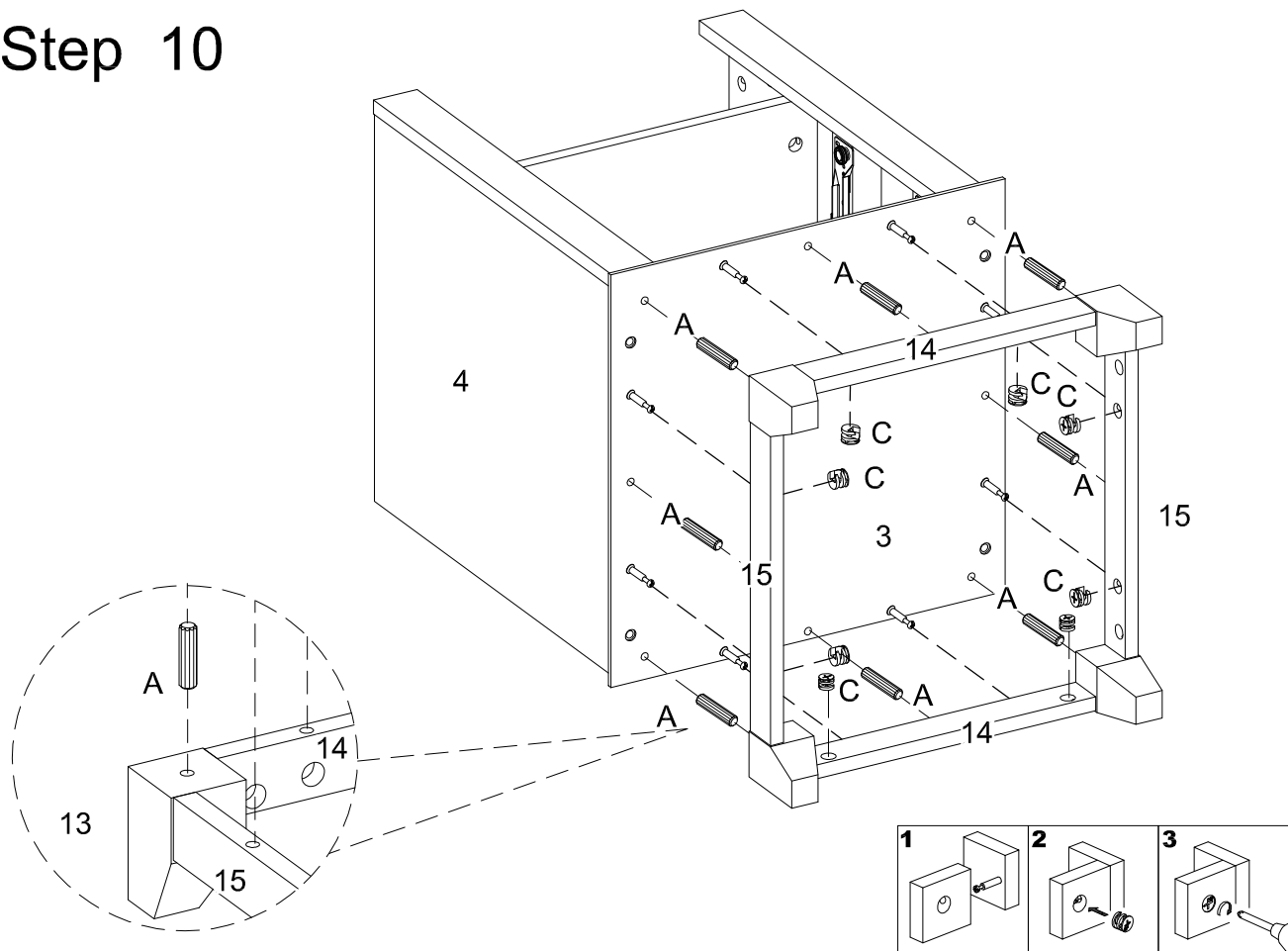
Step 8



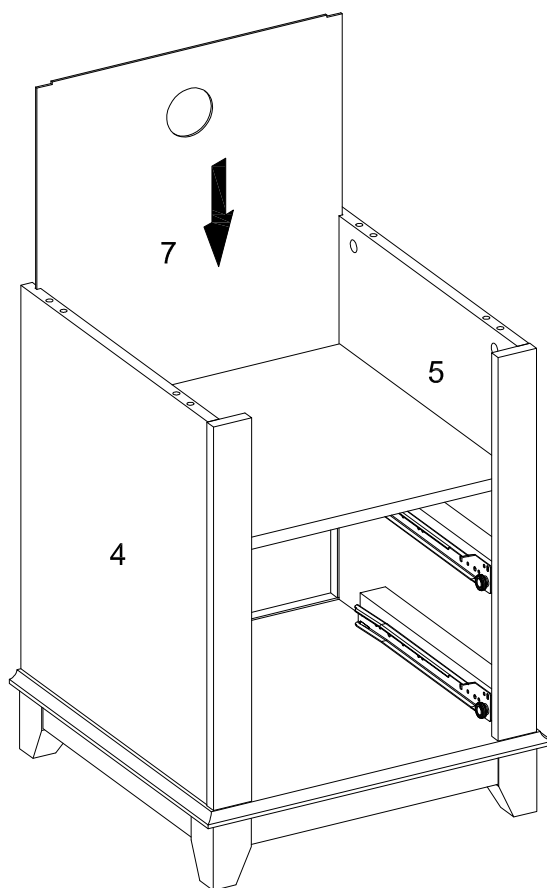
Step 9



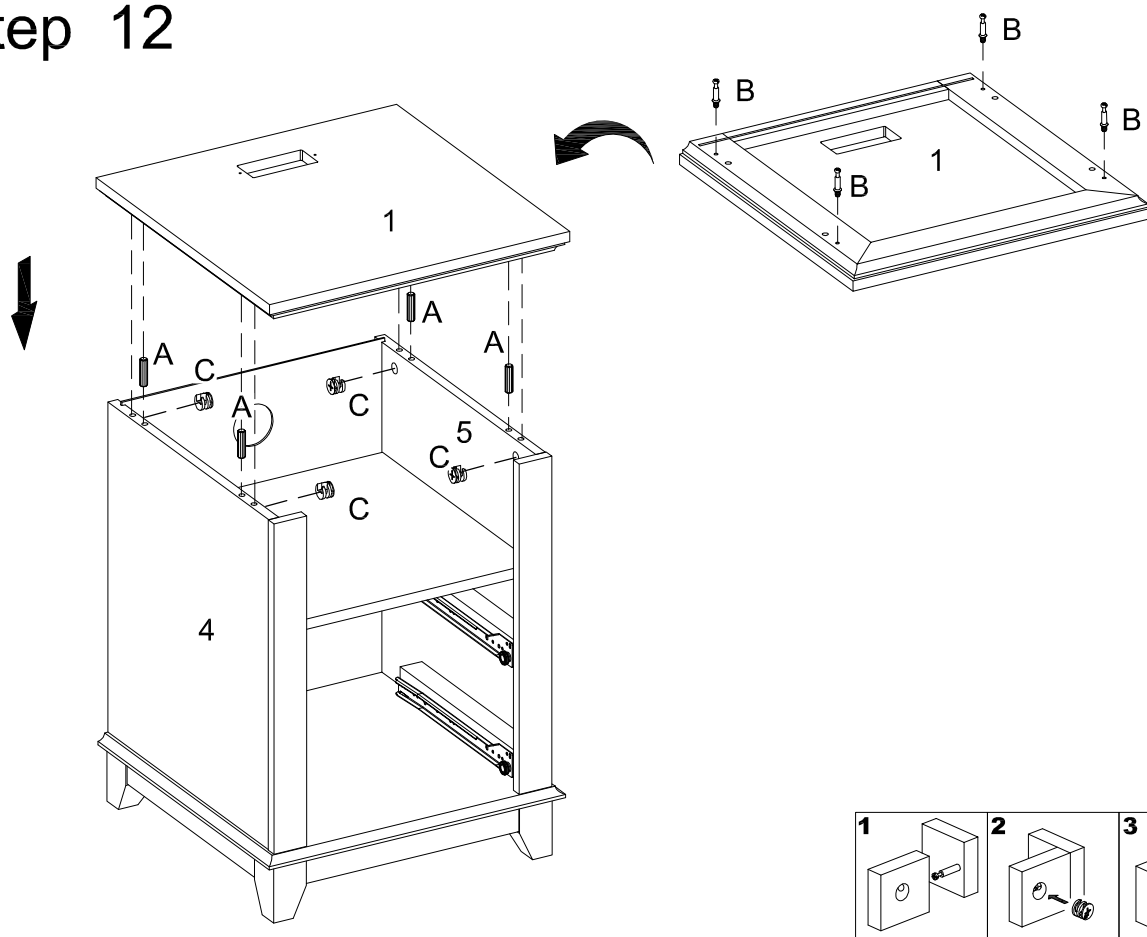
Step 10



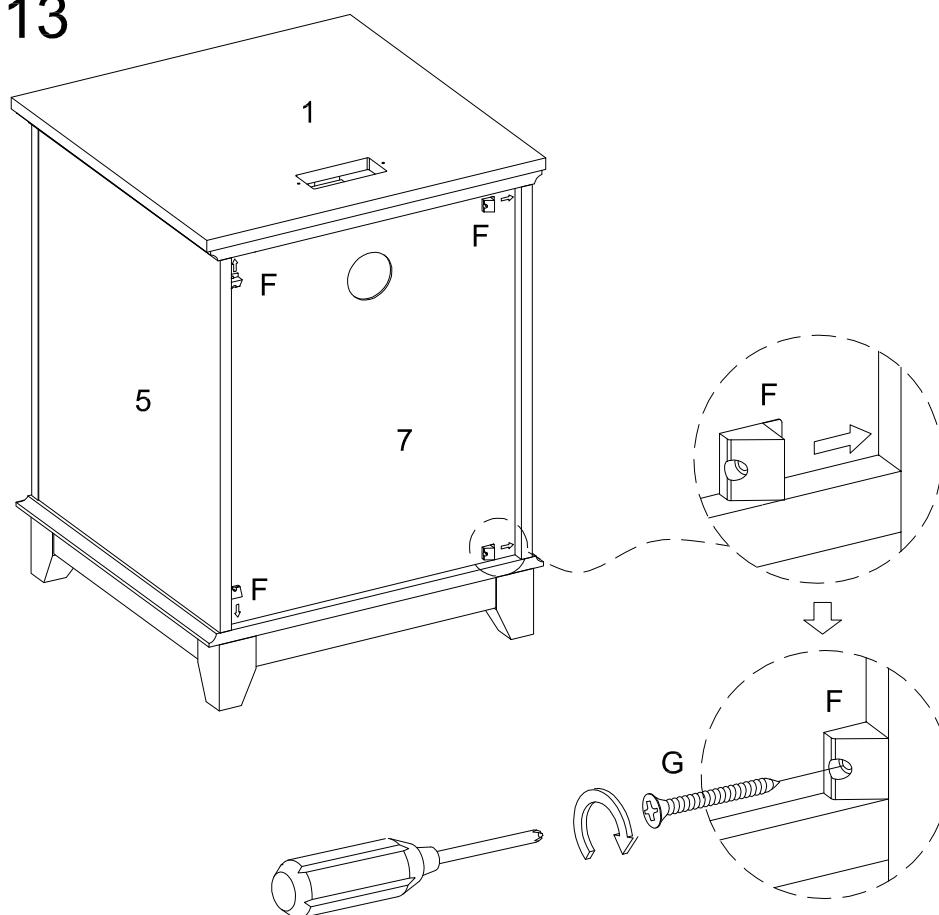
Step 11



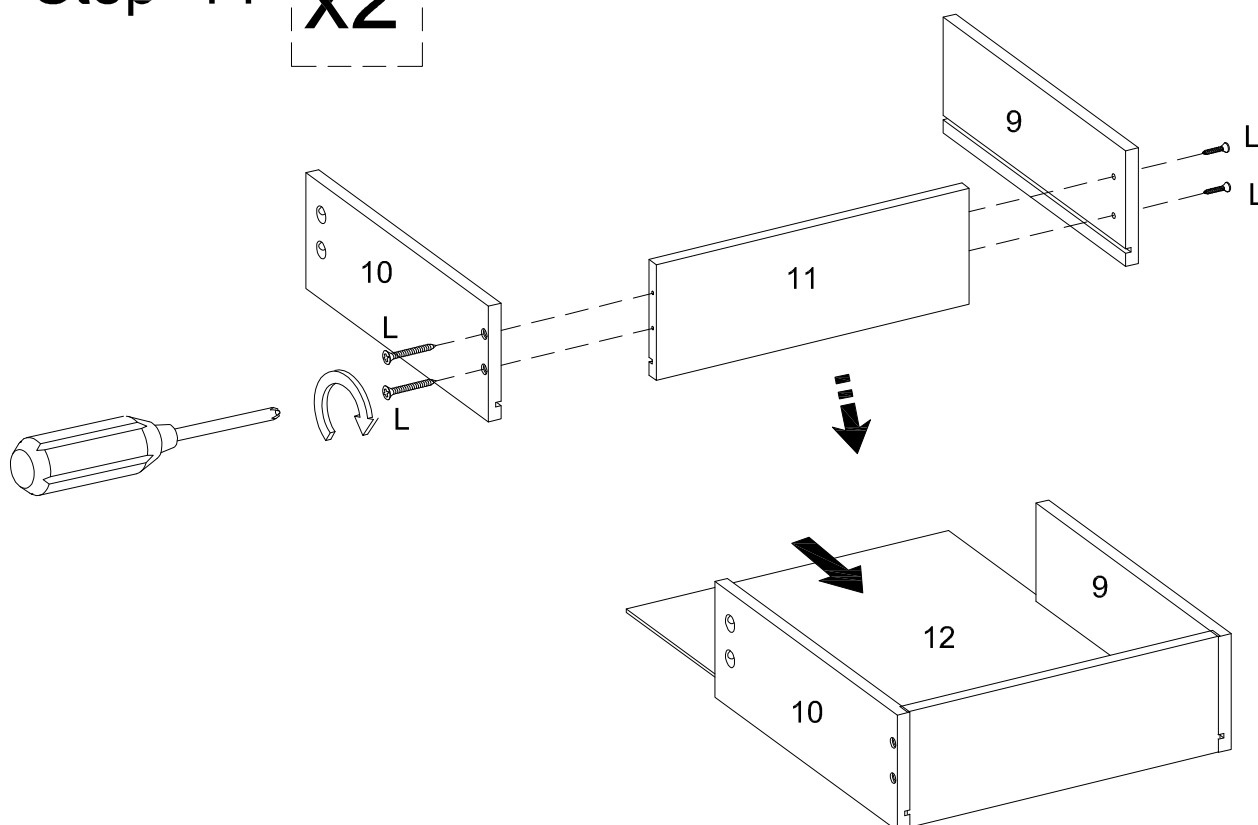
Step 12



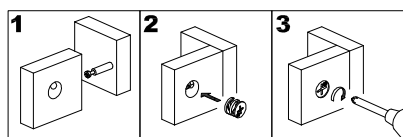
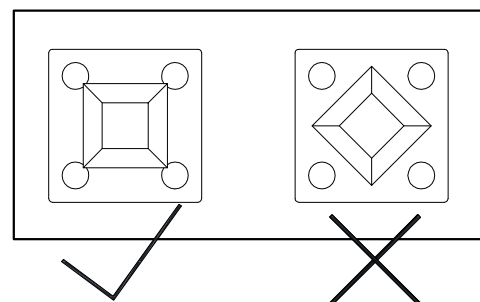
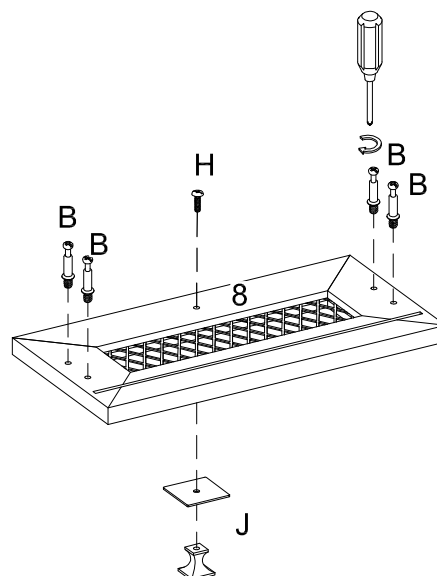
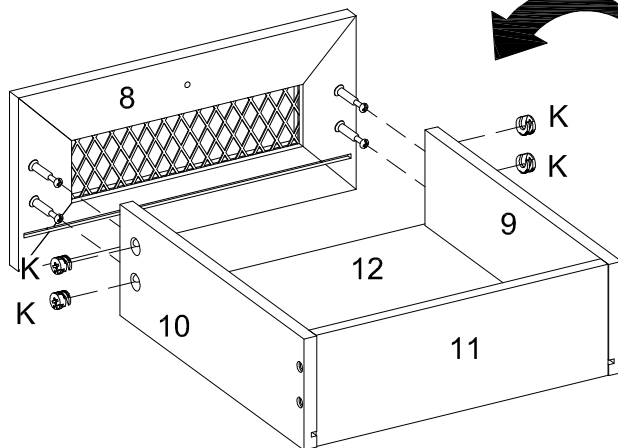
Step 13



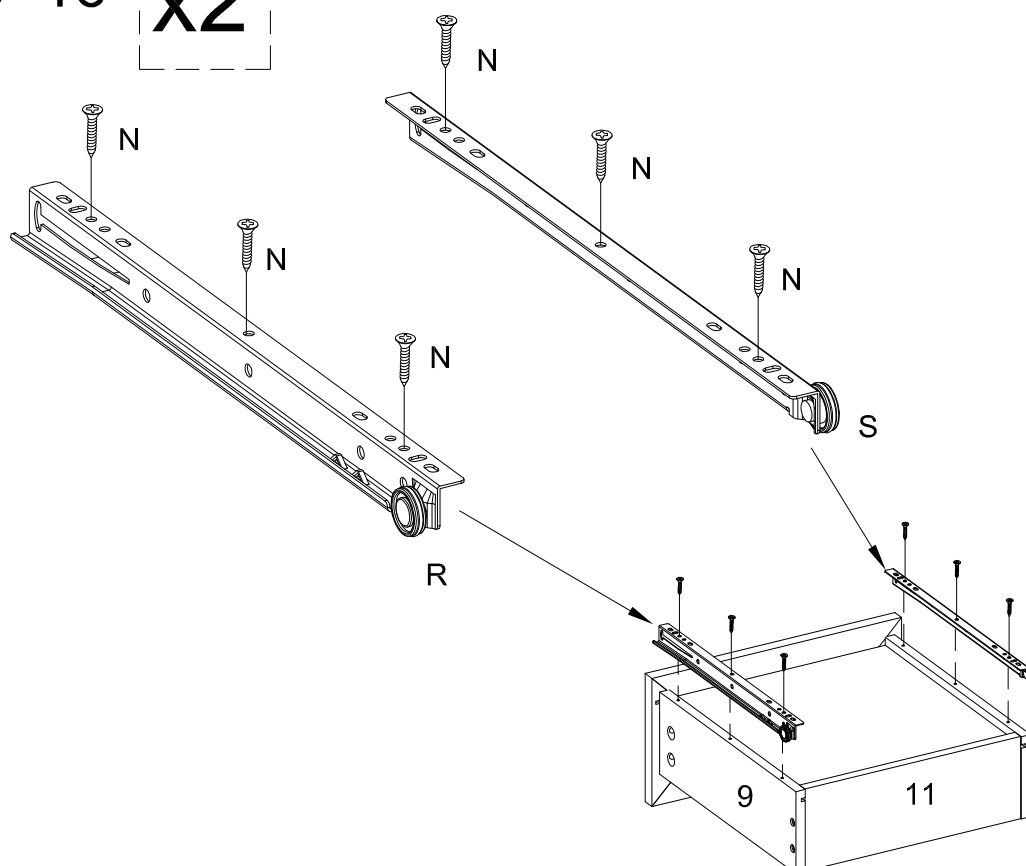
Step 14 **x2**



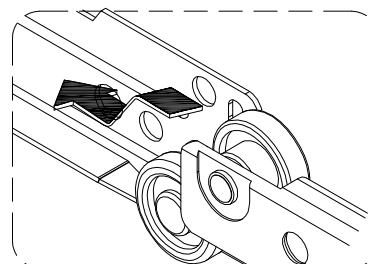
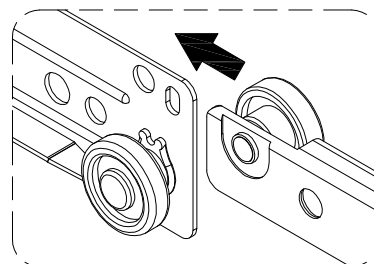
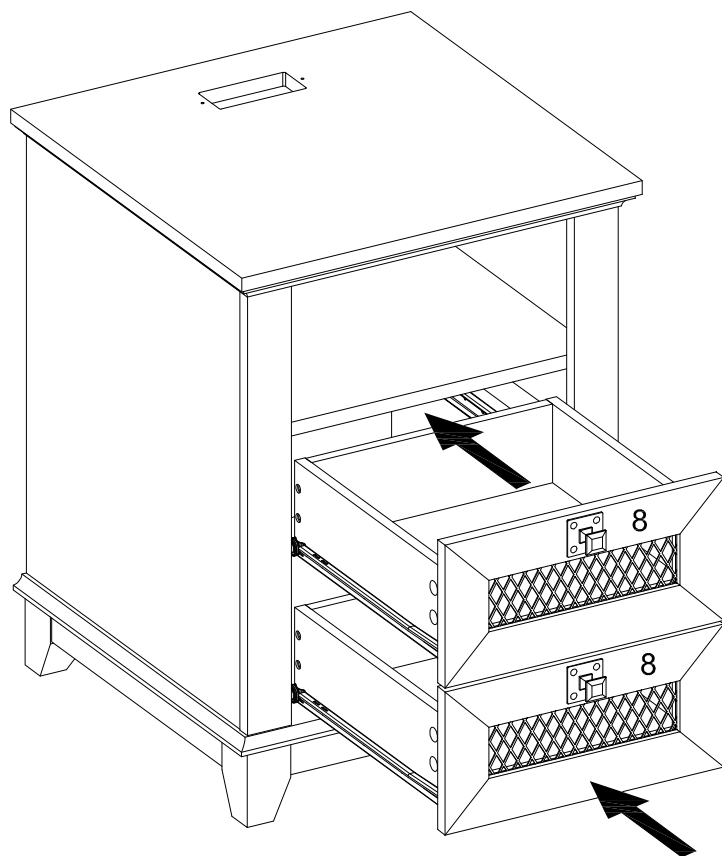
Step 15 x2



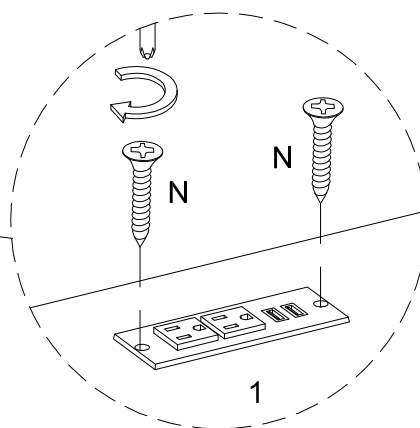
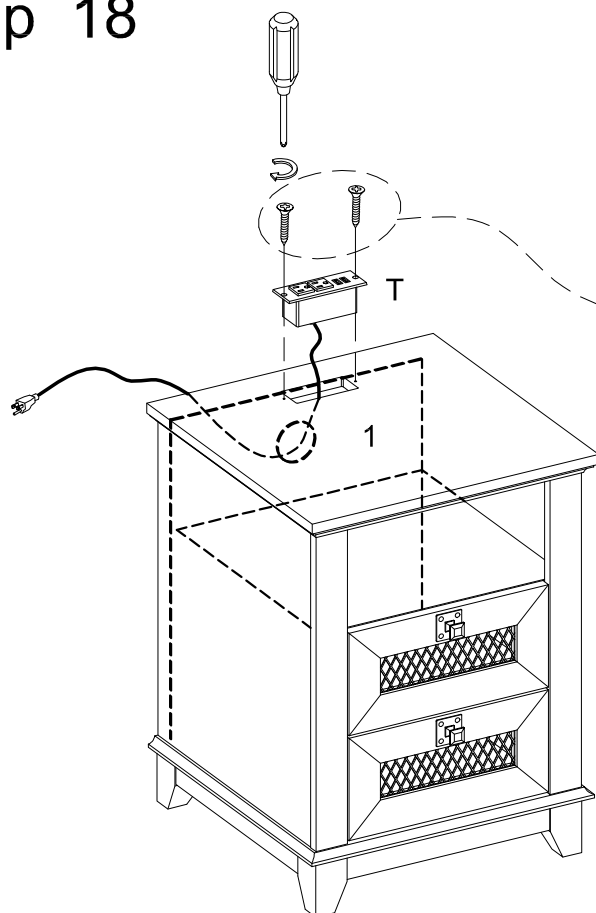
Step 16 x2



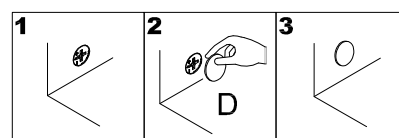
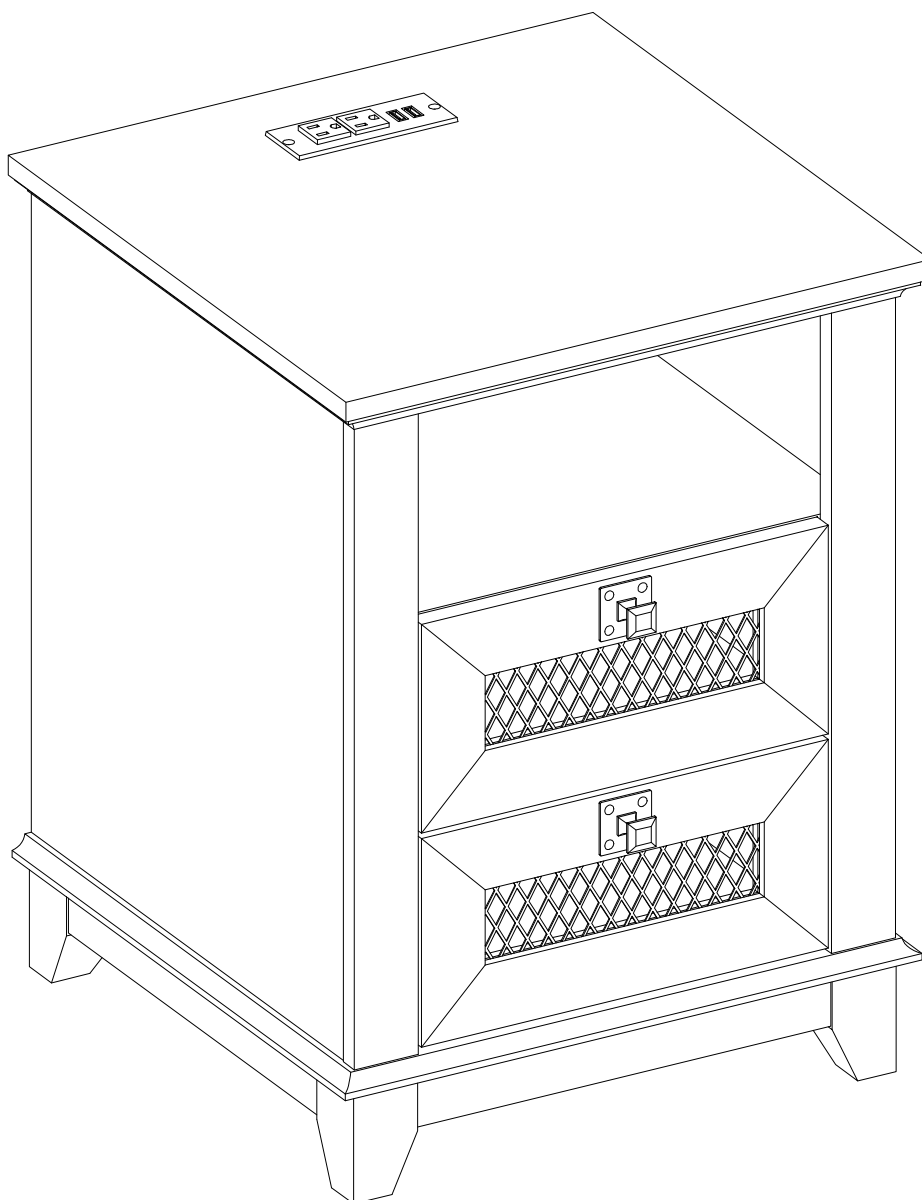
Step 17



Step 18



Step 19



Final Assembly