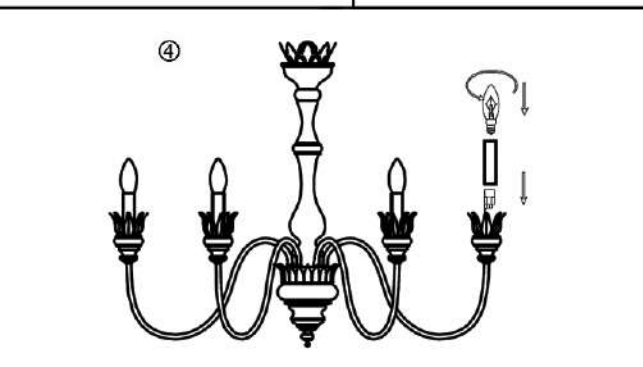
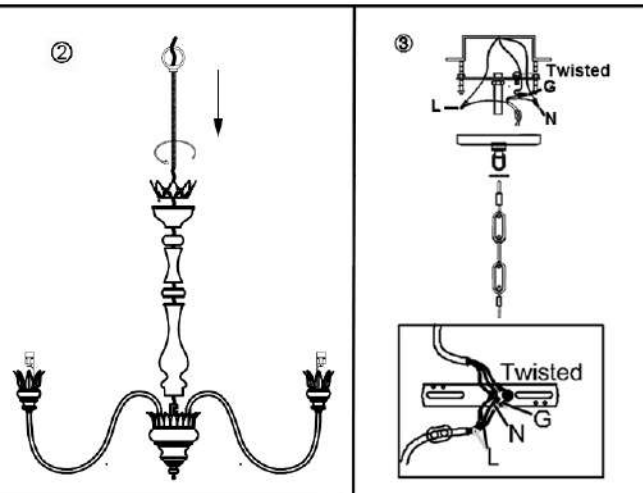
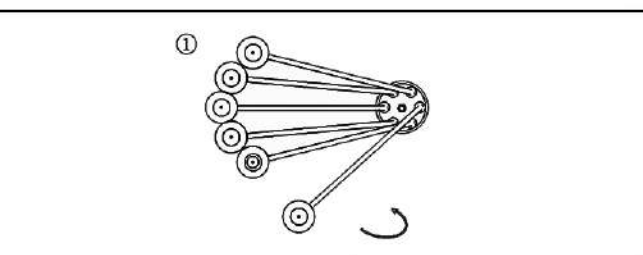
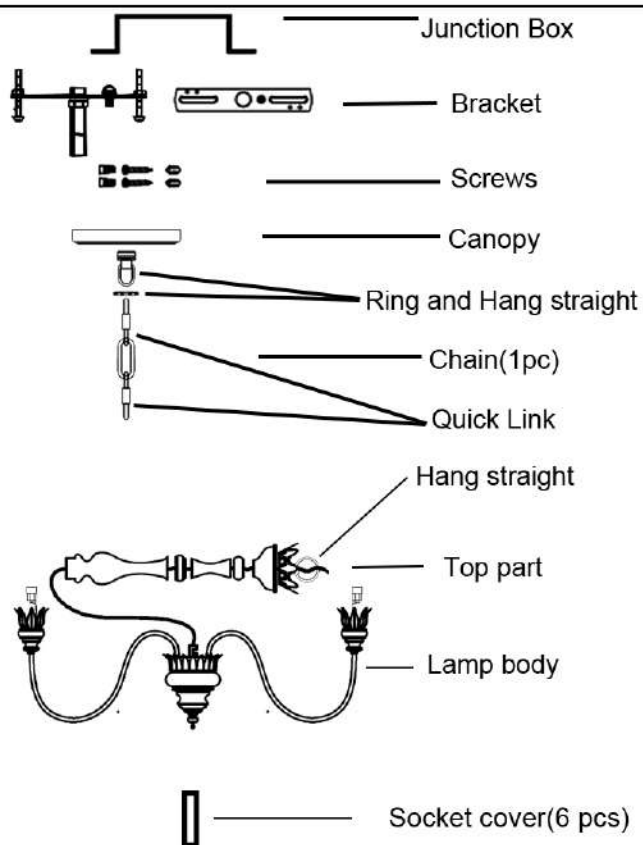


INSTRUCTION MANUAL



IMPORTANT SAFETY INSTRUCTIONS:

1. This fixture has been rated for 6 x 60 Watt, E12 standard bulb
2. Use an authorized and certified electrician for consultation and installation
3. To avoid the risk of fire, do not exceed the recommended wattage
4. Keep away from children
5. The manufacturer and distributor accepts no liability for incorrect installation.
6. For indoor use only.

Warnings:

1. Turn-off electricity supply at main circuit panel before installing. Do not connect electricity supply until your ceiling light is fully assembled and installed.
 2. All wires are connected. Do not remove the ceiling light from its packaging by pulling on the power cord, as a bad connection may result.
- Do not touch bulb when fixture is turned on or look directly at light bulb.
Keep flammable materials away from light bulb.
4. Deviation from instructions may result in a risk of fire or electric shock.

PRODUCT DESCRIPTION:

General material: Iron
Grounded / Hardwired

TO ASSEMBLE:

1. Carefully remove all parts from the box and remove all plastic covering.
2. Turn OFF power to the junction box where the ceiling light will be installed.
3. Adjust the arm from the lamp body, install the top part to the lamp body, lock it with the hang straight.
4. Unlock the quick link at one side of the chain and attach to the hang straight of the lamp body.
5. Loosen the ring of the hang straight from the canopy bracket, and put the ring and canopy through the chain to the end.
6. Attach the bracket (with hang straight) to the ceiling with screws
7. Unlock the quick link of the chain at the other side, and attach it to the hang straight of the bracket
8. Connect the ground wire from the fixture to the ground junction box wire (Usually the green or bare wire) and wrap the connection with electrical tape. Connect the hot wire to the hot junction box wire (Usually black or smooth) with a plastic wire nut and wrap the connection with electrical tape. Connect the neutral wire to the neutral junction box wire (Usually white or ribbed) with a plastic wire nut and wrap the connection with electrical tape.
9. Move the canopy up to the ceiling, then fasten the ring on the hang straight.
10. Put on the socket covers on each socket.
11. Fasten lightbulbs to the lampholders.
12. Restore power to the junction box and test ceiling light fixture

CARE INSTRUCTIONS:

1. Make sure that the power is turned off and bulb has cooled before handling.
2. Wipe clean with a dry cloth / mild soapy solution. Do not use corrosive cleaners.
3. The cable/cord of this ceiling light cannot be replaced: If the cable is damaged, do not use the light.