

TWIN LOFT BED/FULL LOWER BED

SAFETY FIRST!

All of our Bunk Beds were designed and manufactured with **your child's safety as our top priority**.

Their unparalleled strength is a by-product of the safety design. Our bunks meet all compliance with ASTM F 1427-13 "Standard Consumer Safety Specification for Bunk Beds" and Code of Federal Regulations (CFR) 1213 "Safety Standards for Entrapment Hazards in Bunk Beds" and (CFR) 1513 "Requirements for Bunk Beds".

Safety is a cooperative effort between us as the manufacturer, and you as a guardian. **Please read and consider the warnings listed on this page** when choosing a mattress and discussing rules of use with your child.

REPLACEMENT PARTS

Replacement parts, including additional guard rails, may be obtained from any of our dealers.



SAFETY WARNINGS

1. Follow the information on the warnings appearing on the upper bunk end structure and on the carton. Do not remove warning label from bed.
2. Always use the recommended size mattress or mattress support, or both, to help prevent entrapment or falls.
3. Surface of mattress must be at least 5 inches (127mm) below the upper edge of guardrails.
4. Do not allow children under 6 years of age to use the upper bunk.
5. Prohibit more than one person on the upper bunk.
6. Periodically, check and ensure that the guardrail, ladder, and other components are in their proper position, free from damage, and that all connectors are tight.
7. Do not allow horseplay on or under the bed and prohibit jumping on the bed.
8. Always use the ladder for entering and leaving the upper bunk.
9. Do not use substitute parts. Contact the manufacturer or dealer for replacement parts.
10. Use of a nightlight may provide added safety precaution for a child using the upper bunk.
11. Always use guardrails on both long sides of the upper bunk. If bunk bed will be placed next to the wall, the guardrail that runs the full length of the bed should be placed against the wall to prevent entrapment between the bed and wall.
12. **The use of water or sleep flotation mattresses is prohibited.**
13. **Keep these instructions for future reference.**



STRANGULATION HAZARD

Never attach or hang items to any part of the bunk bed that are not designed for use with the bed; including, but not limited to, hooks, belts and jump ropes



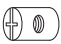









SIZE OF MATTRESS AND FOUNDATION

Use only mattress, foundation and deck combined which is 74-75 inches long and 37 ½ -38 ½ inches wide on twin upper bunk and 52 ½ -53 ½ inches wide on full lower bunk.

Ensure thickness of mattress and foundation combined does not exceed 8 inches and the mattress is at least 5 inches below upper edge of guardrails.

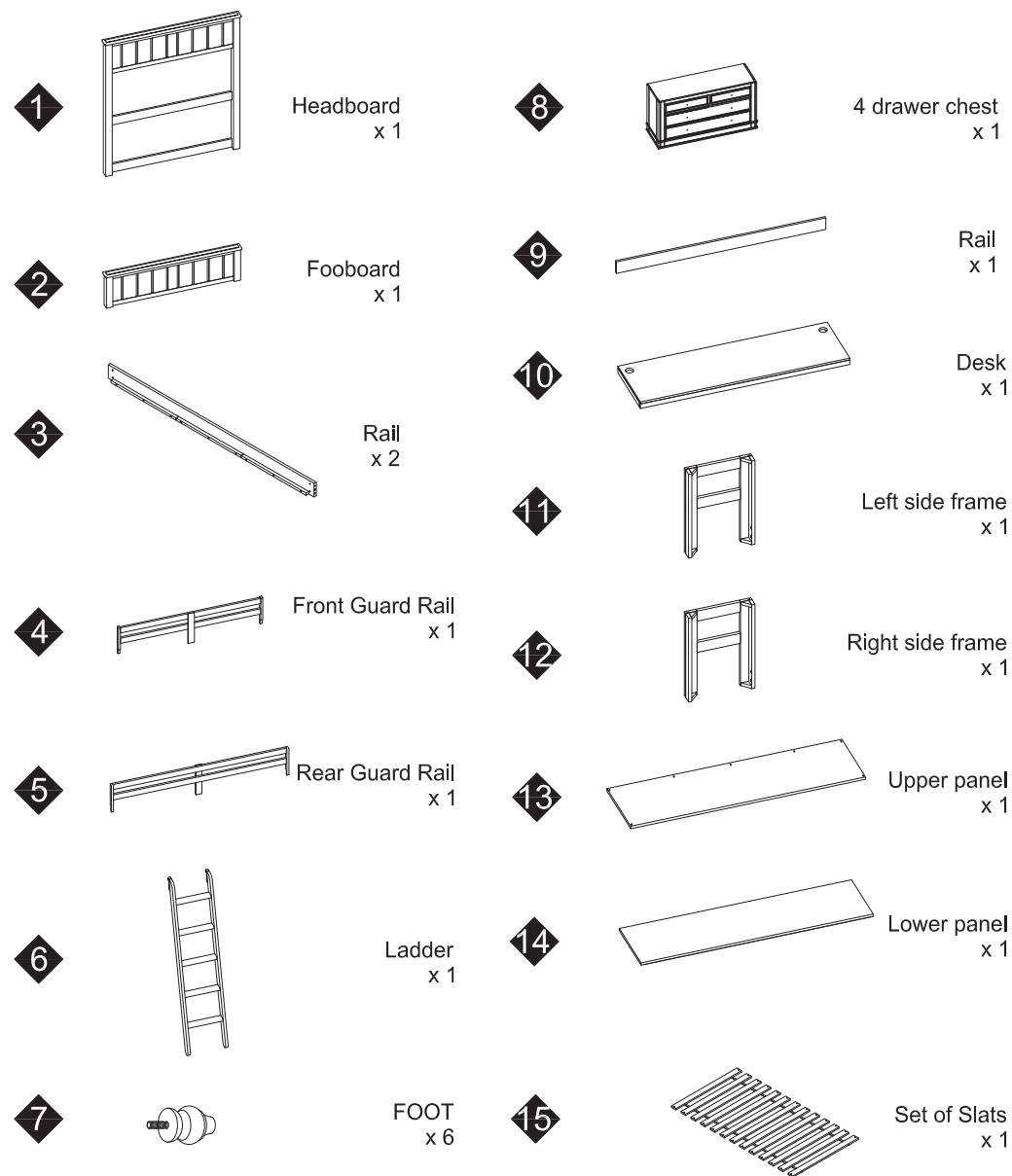
PARTS LIST

HARDWARE FOR LOFT BED

A		Ø6-60X110mm Bolts X 10
B		Ø6-46X63mm Bolts X 2
C		Barrel Nuts 1/4 "x9.5x13 X 12
D		Ø6-24X35mm Bolts X 22
E		Flat washer X 8
F		Lock washer X 8
G		Wood screw x15mm X 10
H		Wood screw x30mm X 34
I		Shelf Support Pin X 4
J		Allen wrench X 1
K		Ø10 x 40mm Wood Dowels X 4
L		Ø8 x 30mm Wood Dowels X 4

Other Tools Required (Not Included)

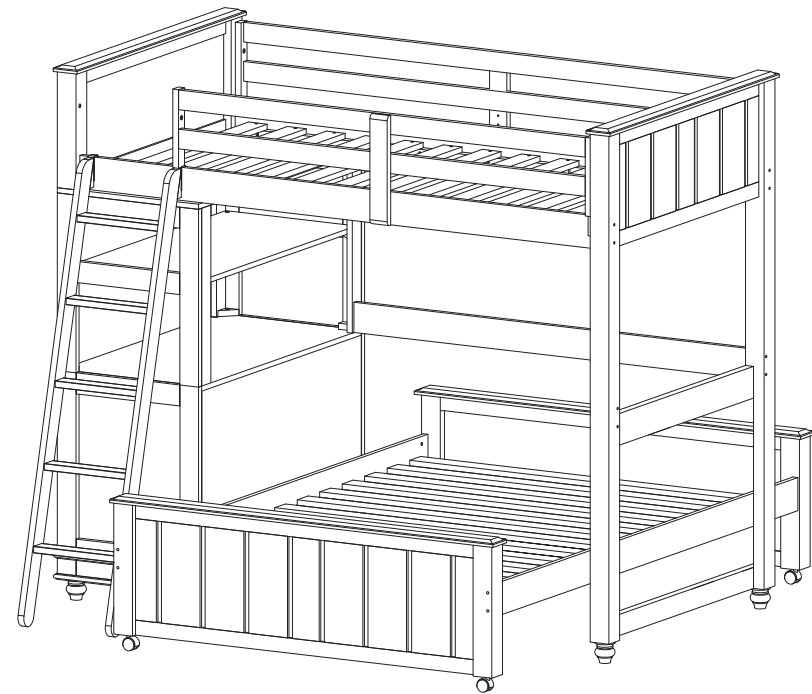
- Phillips Screwdriver
- Flathead Screwdriver





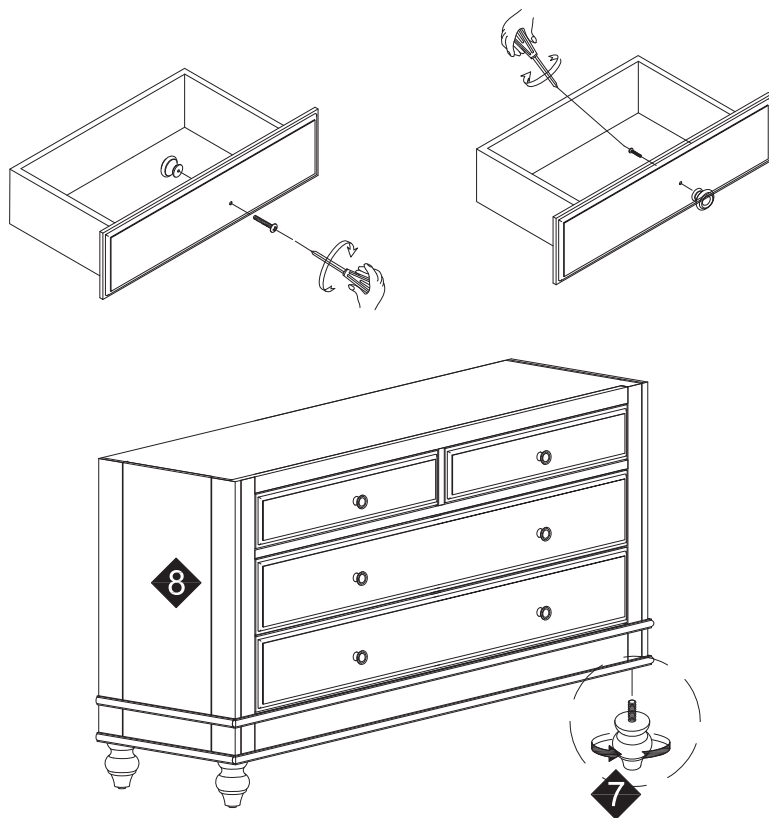
Fully loft bed assembled without lower bed

Fully Loft Bed Assembled
Right Side Facing

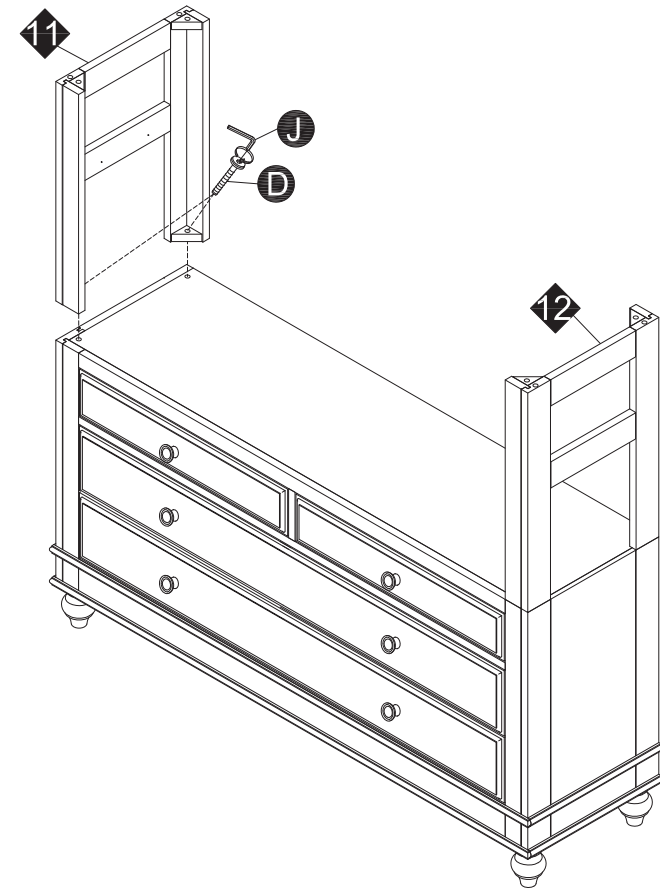


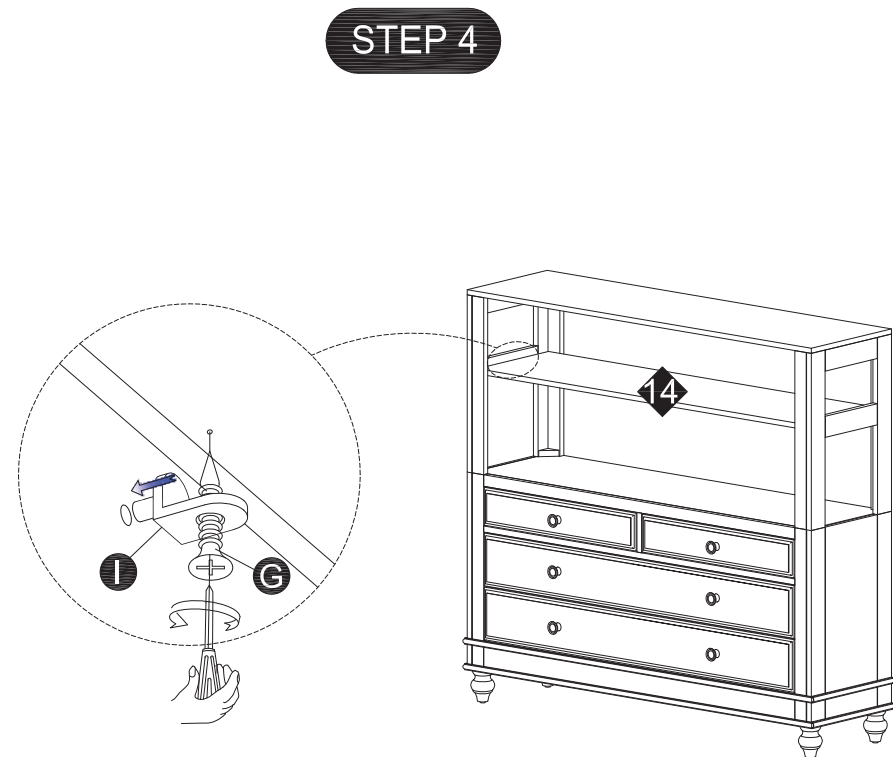
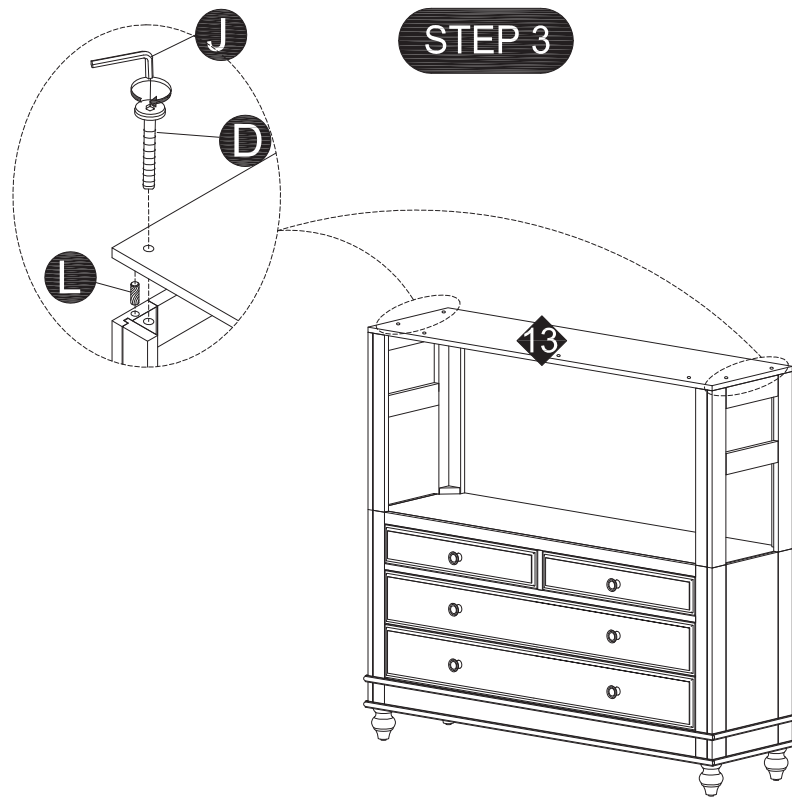
Fully Loft Bed Assembled
Left Side Facing

STEP 1

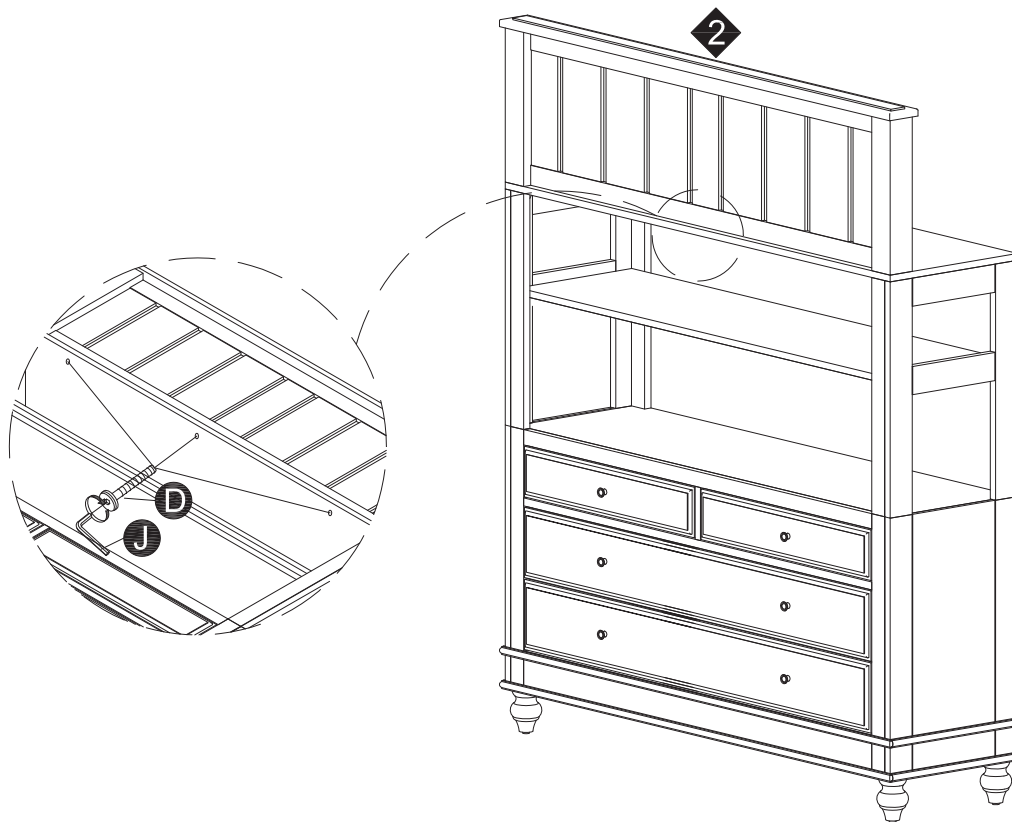


STEP 2

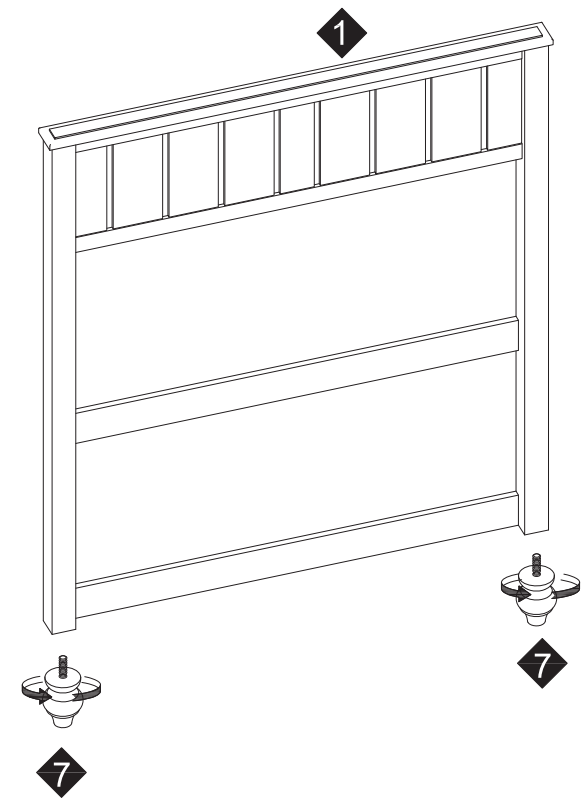




STEP 5

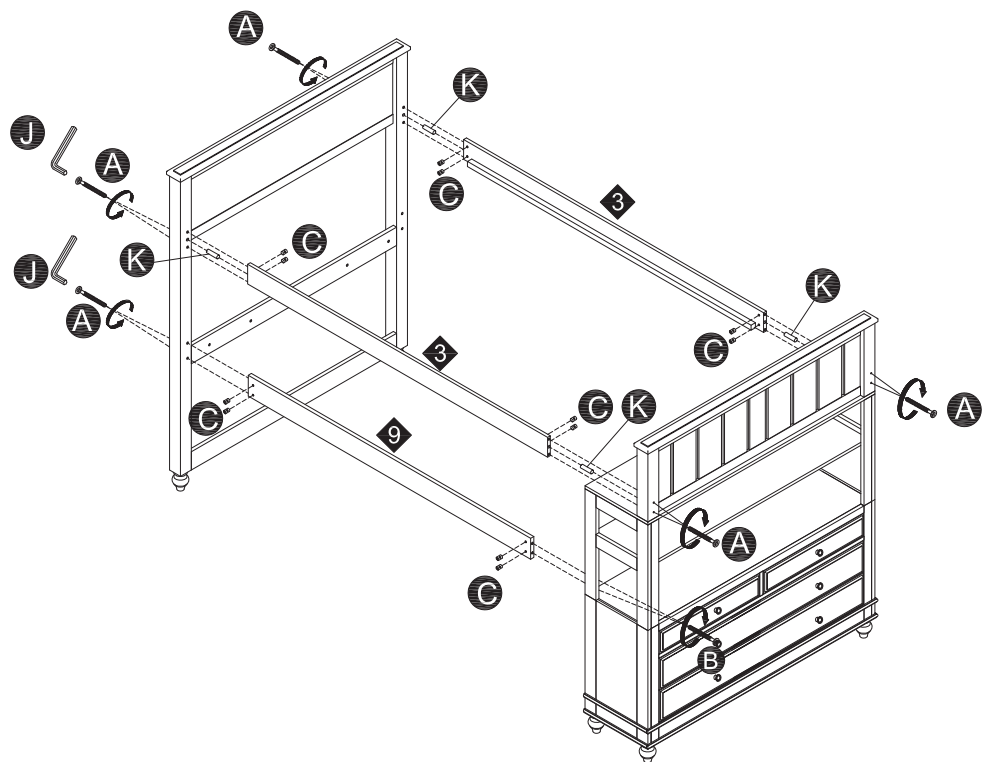


STEP 6

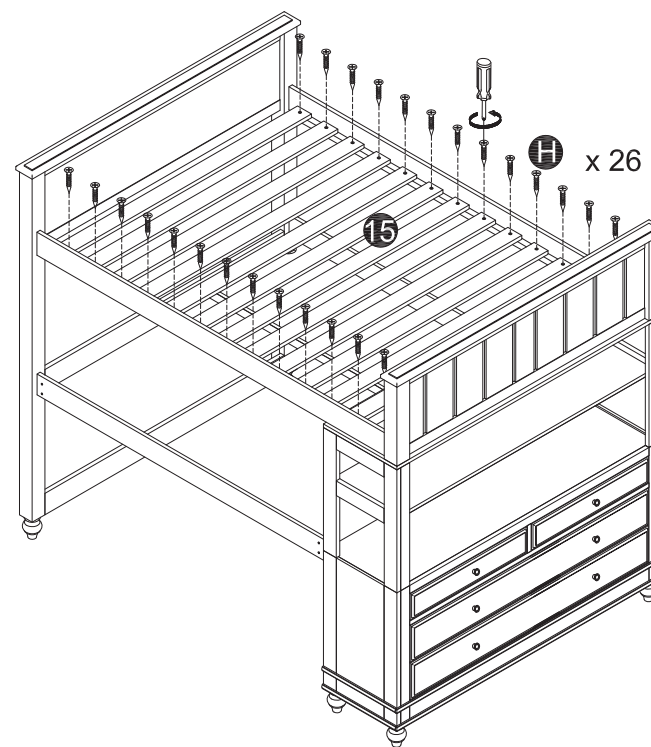


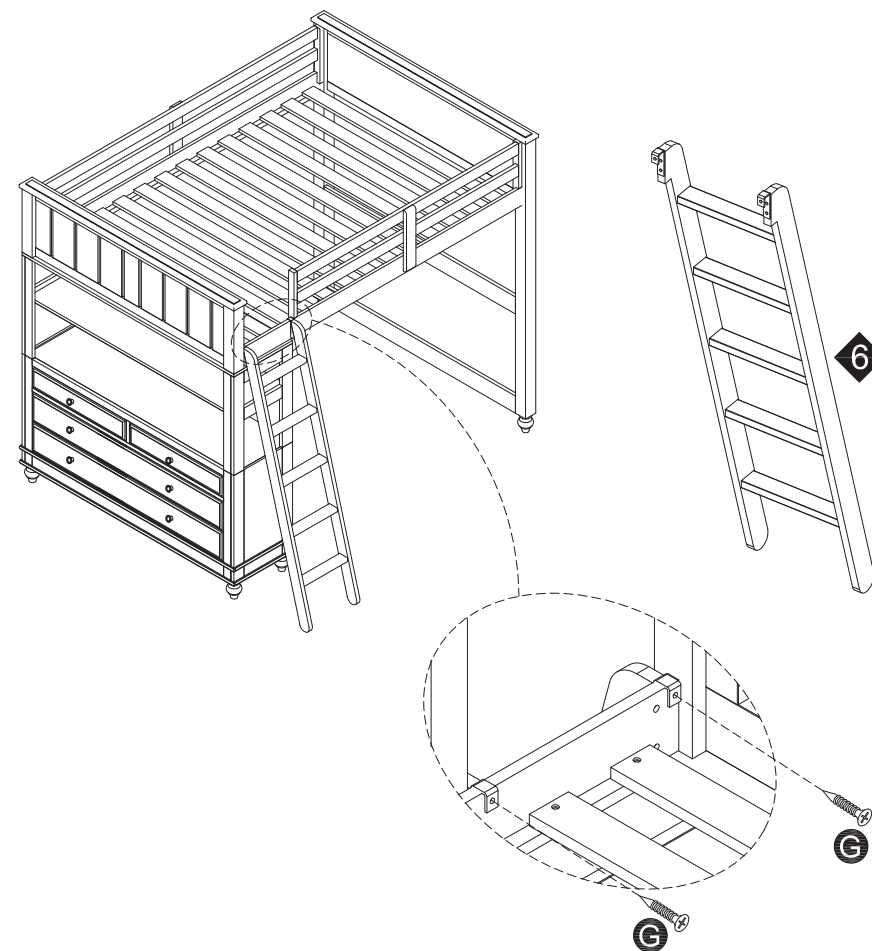
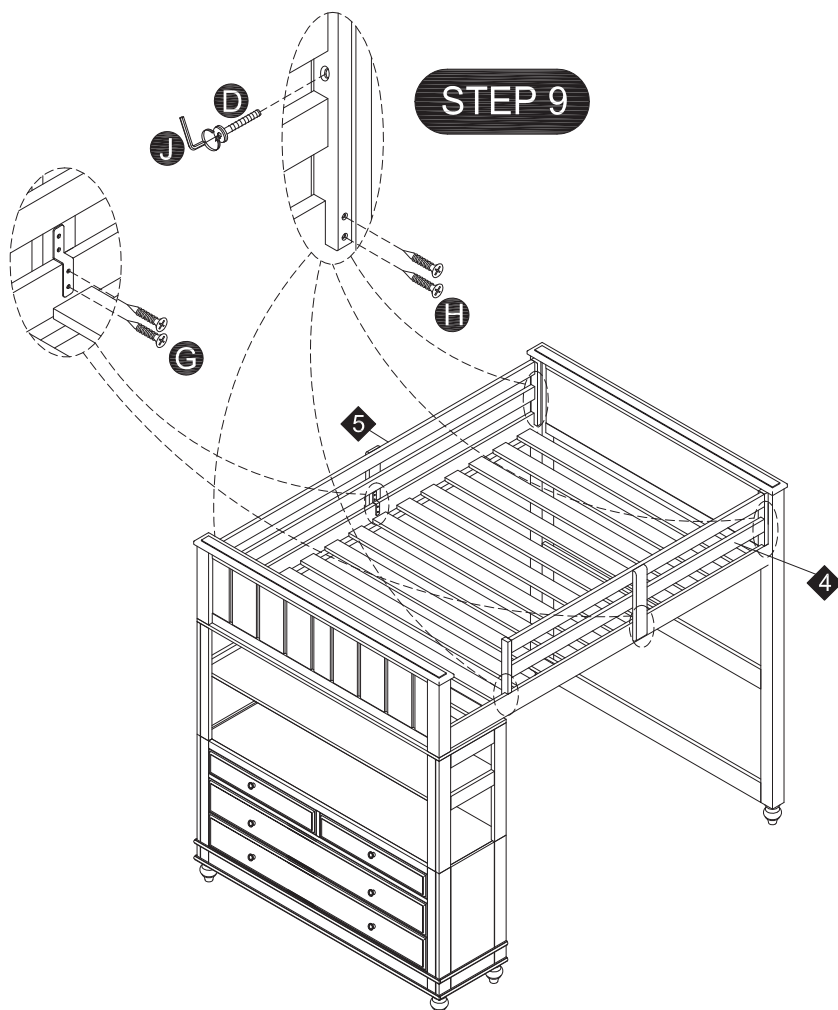
STEP 7

Now choose which side of the loft you would like the chest on.



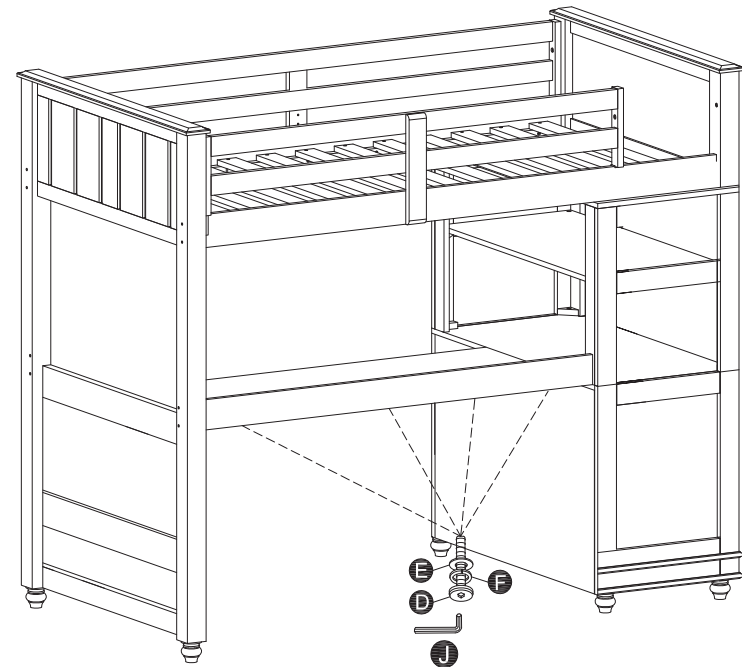
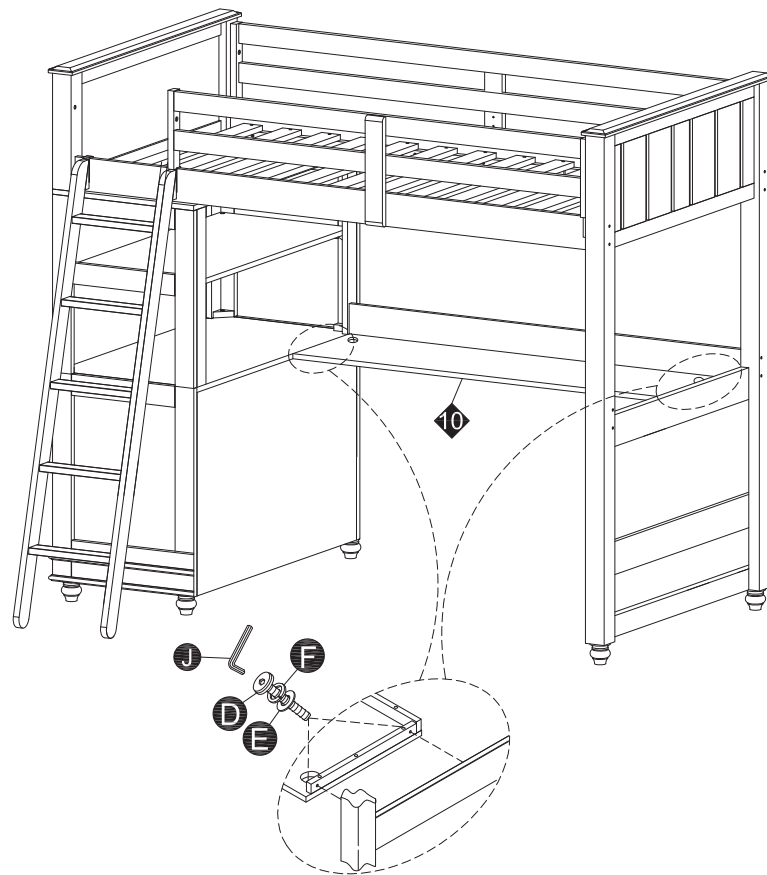
STEP 8





STEP 10

If you did not purchase a desk, skip this step.



INTRODUCTION

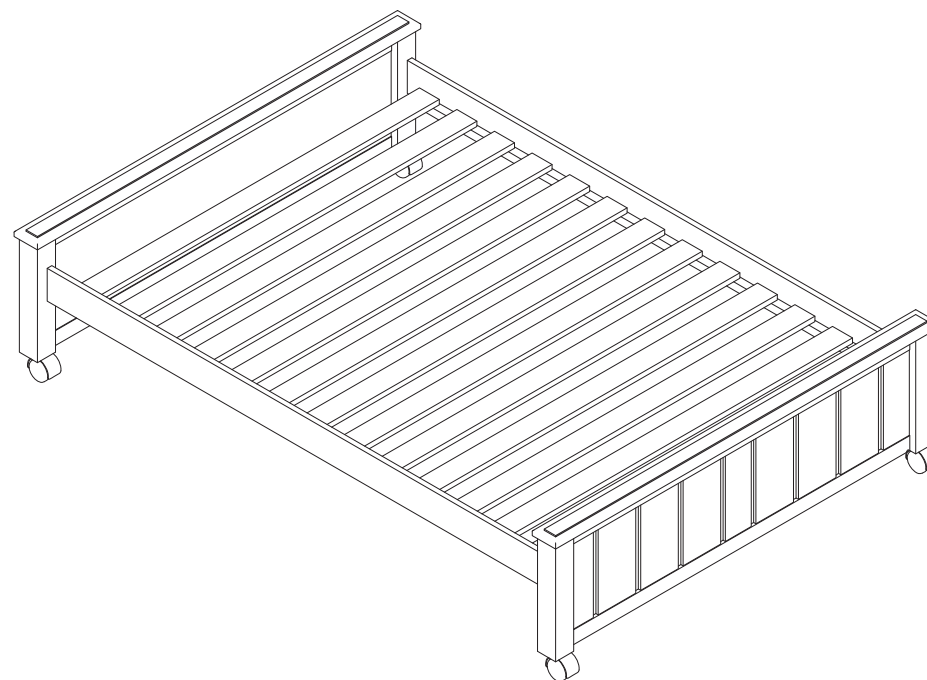
Enclosed please simple step-by-step instructions to help you quickly assemble your product. Before you begin we recommend that you follow the steps below:

1. Please read the instructions thoroughly
2. Identify all parts and hardware
3. Gather the tool(s) necessary
4. 2 adults required for assembly


To protect your parts during assembly please place them on a soft surface. To clean surface use only water on a damp cloth. Do not use window cleaners or cleaning abrasives as it will scratch the surface and could damage the protective coating.


CUSTOMER SUPPORT

If you are missing parts or need assistance with your product, please contact the retailer from whom you purchased the product. When you call or email, please include the Product's Item Number and PO Number which is located on the Production Tracking Sticker. This sticker can be found on the bottom, inside or back of your product.



A  Ø6-60X110mm Bolts
X 8

B  Barrel Nuts ¼"x9.5x13
X 8

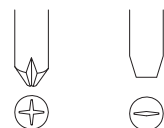
C  Wood screw
X 24

D  Allen wrench
X 1

E  Plastic wheel
X 2

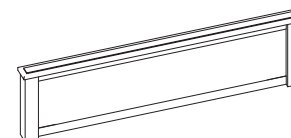
F  Plastic wheel lock
X 2

G  Ø10 x 40mm Wood Dowels
X 4



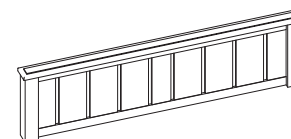
Other Tools Required
(Not Included)
Phillips Screwdriver
Flathead Screwdriver

1



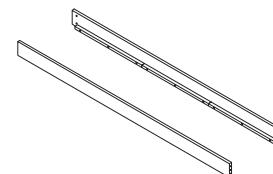
Headboard
X 1

2



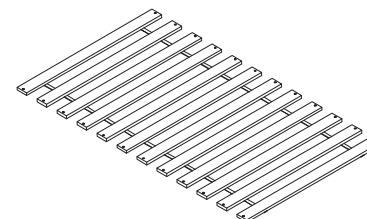
Footboard
X 1

3



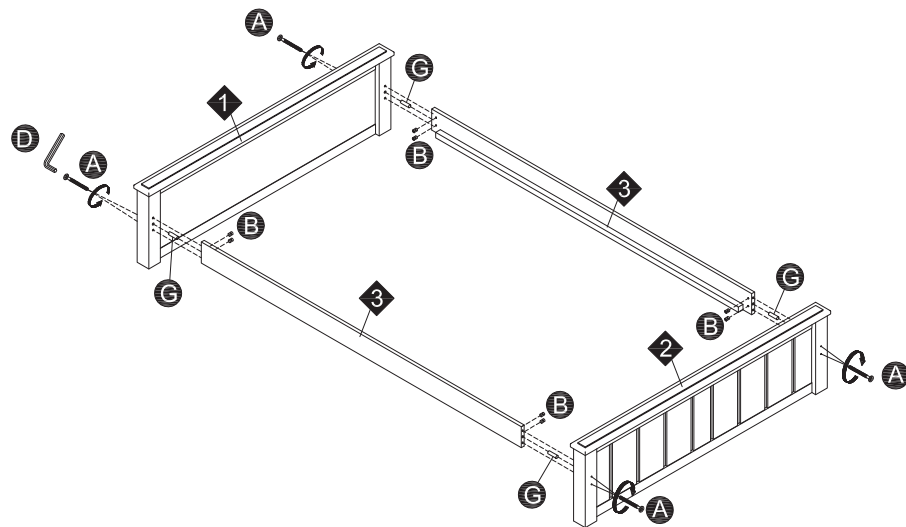
Rails
X 2

4

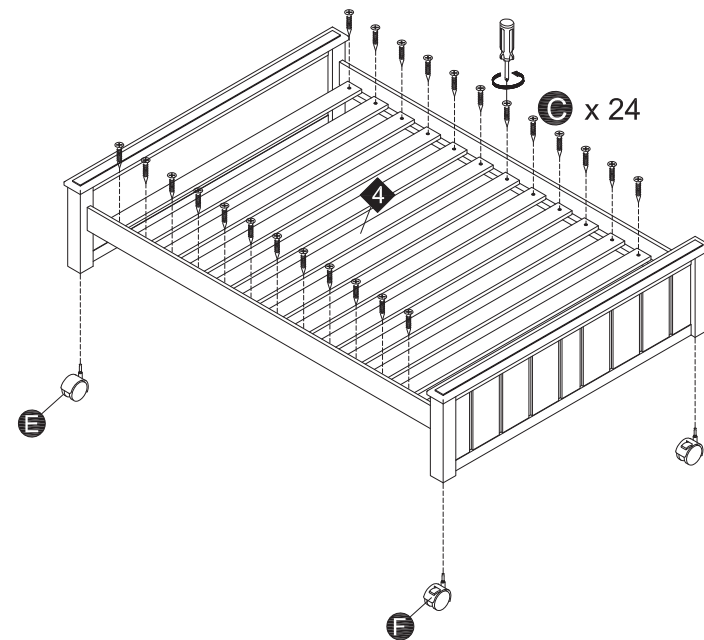


Set of Slats
X 1

STEP 1



STEP 2





WARNING

Important Safety Notice

Dresser/chest can tip (fall over) when not used as intended. This could potentially result in serious injury or death. **Keep your children and others safe by following these simple rules:**

1. Do not allow climbing on any dresser/chest.
2. Do not leave drawers open when not in use.
3. Do not allow standing in drawers.
4. Do not allow hanging from drawers.
5. Do not allow standing on top of dresser/chest.
6. Do not place heavy objects in drawers.
7. Do not place heavy objects on top of the Dresser/chest which can be pulled down on top of your child.
8. To avoid head injury, do not allow your child to play underneath open drawers.
9. Hutches, mirror, etc. Must be securely fastened to the dresser according to the instructions enclosed with those items.
10. Always monitor your child's activity when in the nursery.



- A lacquer finish is used on this furniture to protect the wood. **It is not waterproof, clean spills immediately.** Dust using a slightly damp cloth, making sure no standing water is left on the furniture. **DO NOT** use any household cleaners, citrus-based polishes, wood soaps, or oils; they can break down the natural lacquer finish.



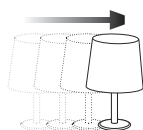
- **Do not place furniture in direct sunlight.** Natural solid wood furniture will naturally color as it ages, however, direct sunlight dramatically speeds up the process.



- In natural wood furniture, the variations in texture and grain **will affect the finish**, making it impossible to guarantee an exact match between two pieces of wood even though identical finishing processes are used. These differences in character **are not defects**, but variations that make each piece of furniture unique and beautiful.



- **Solid wood naturally expands and contracts.** In high humidity you may find that drawers can stick slightly. This will correct itself, and is not reason for concern.



- **Do not place furniture over heating or cooling vents.** Dramatic changes in temperature can cause the wood to split.

- If you place objects such as lamps or plants on your case pieces **make sure to move them from time to time.** There may be a slight discoloration where the object was. However, by exposing it to light the color will catch up to the rest of the case.



- Plastic or foam footed items such as phones or clocks can damage this finish, **use trivets under such items.**

