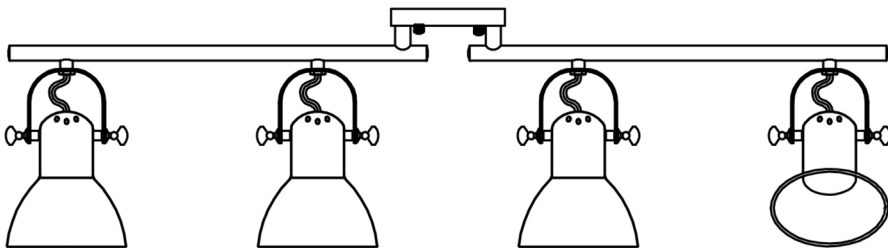


Product Manual

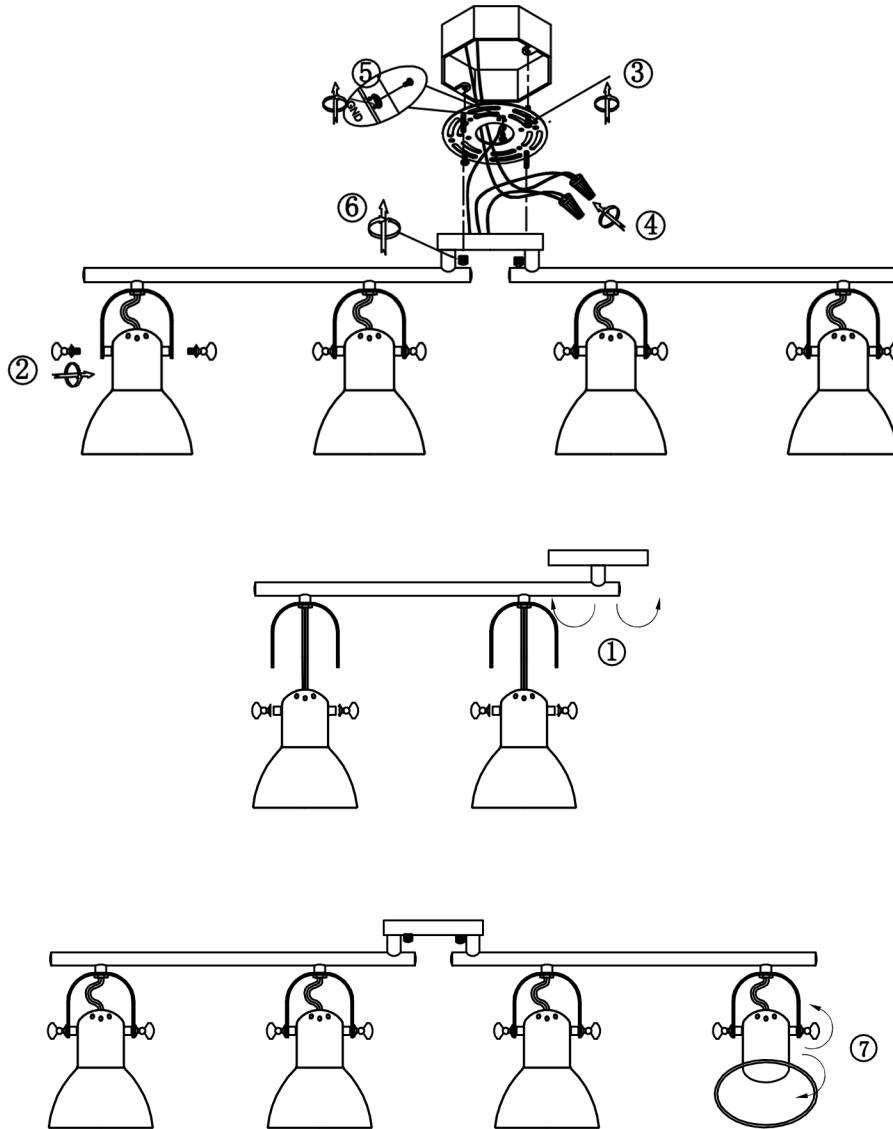


Product Parameters

Product Model: 48294	Bulb base: E26
Input Voltage: 110-130V, 60Hz	Switch Type: wall switch
Color: black	Size: high8.6in *wide 35.4in
Material: metal	

Matters Needing Attention

- 1.Rated voltage 110-130V, 60Hz.
- 2.Wear gloves when installing to avoid scratching, handle with care and place gently. Please do not hit the light to avoid damage and injury.
- 3.The fixtures shall not be close to acid, alkali and other corrosive chemicals and gases. Additionally, clean it with soft cloth in instead of much water.
- 4.Please do not put it in places with high humidity or high temperature.
- 5.To avoid the risk of electric shock, make sure the switch is off while installing, cleaning and replacing.
- 6.If you have questions about the installation of this product please consult a qualified electrician.



Installation Steps:

[Notice]: Please cut off the power supply before installation.

Installation Steps:

[Notice]: Please cut off the power supply before installation.

- ① Unfold the two straight rods of the lamp body
- ② Use fan-shaped screws to attach each of the five lampshades to the bracket
- ③ Use 2 long screws to install the hanging board on the ceiling.
- ④-⑤ Wire according to color classification. There are 3 wires in total: live wire, neutral wire and ground wire. Tighten the terminal cap to cover the connection. To avoid electric shock, please do not let the copper wire expose.
- ⑥ Install the lamp base on the hanging plate and tighten it with short screws on the left and right sides of the fixing device respectively.
- ⑦ Adjust the orientation of the lampshade to your liking
- ⑧ Install 4 E26 bulbs (Note: bulb is not included)
- ⑨ Turn on the power switch and verify that the luminaire is working properly.