

JUJUYUYOP (Table lamp)

CERAMIC TABLE LAMP

Model: JU06/JU07

■ Specification

Voltage: 110-130V

Wattage: 60 Watt Max+7Watt Max

Material: Ceramic

Color: off white/brown/gray

Lamp holder: E26

Light bulb information: A19 6W 2700K

Wire length: 70.9 in/1800 mm

Distance between switch and plug: 37.4in/950mm

Scope of use: Indoor use only

■ Package Include

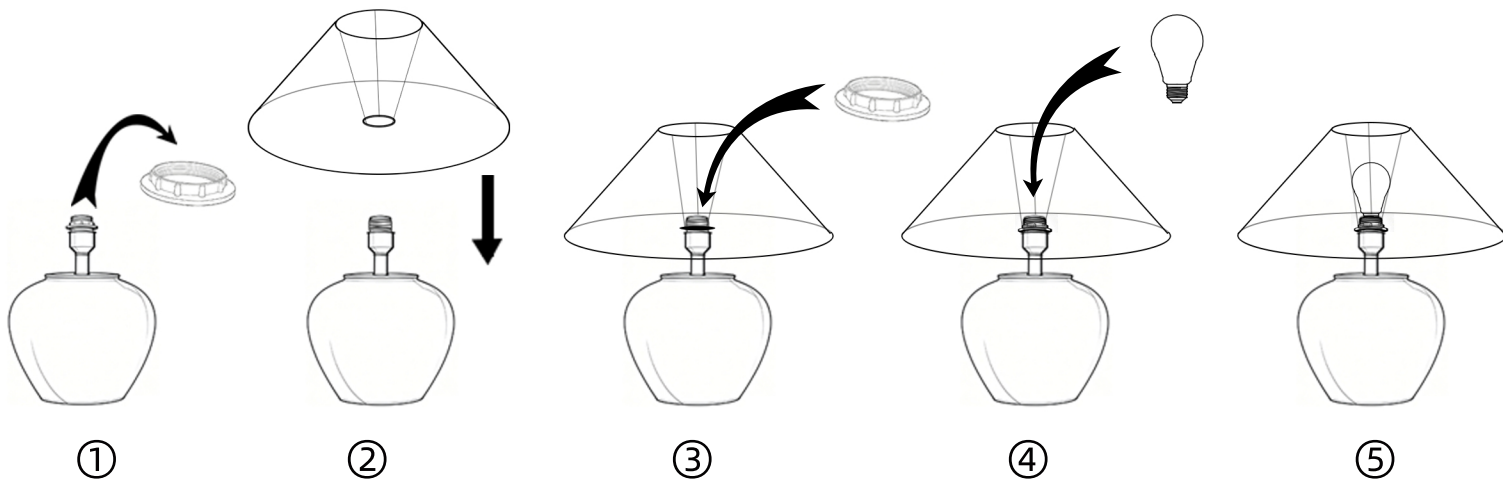
1 x Lampshade

1 x Lamp Base

1 x bulb

1 x User Manual

■ Easy Installation



1. Remove the screw ring from the lamp head
2. Place the lampshade on the lamp head
3. Tighten the screw ring to fix the lampshade
4. Twist on the light bulb

■ Attention

1. If you want to change the 2700K vintage Led bulb included, incandescent light bulbs less than 60W are greatly recommended. Not all Led bulbs are fully compatible with the dimmer system of the lamp, so it may cause to flicker or lose dimming function with other Led bulbs.
2. The bulb will increase the brightness when it is reaching its lifespan or has partial short-circuit. At that moment, please switch off, change a bulb and use it as you would normally.
3. Please shut off the power and unplug it before you screw in a new bulb.
4. Don't put the lamp in overheating working condition or cast it into fire.