

20 : 00

estimated
assembly time



2 or more

people required

Ok, let's
get started!



- Put on mood music!
- To prevent damage to product, use the clean side of package carton or rug as working surface.
- In the event of missing or damaged parts, delivery problems etc., please reach out to our team.
We will be happy to fix the problem!

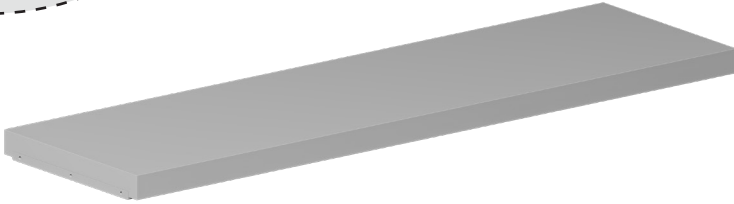
care guide

- Clean regularly with a soft and dry cloth.
- To protect finish, avoid use of abrasive cleaners.
- Wipe up spills immediately. Please!

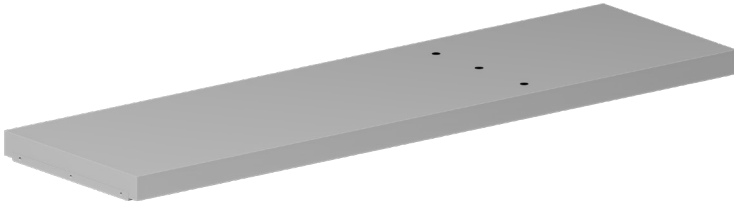
ⓘ **While assembling the product, tighten the bolts up to 50%. Once all parts are in place, only then fully tighten the bolts.**



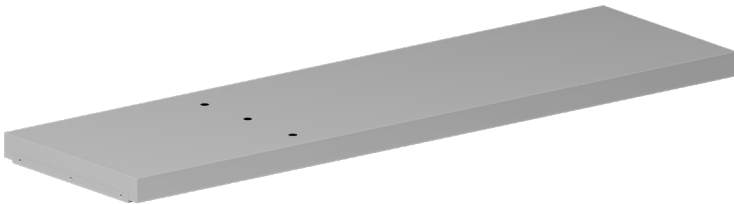
product parts



(A)
Top Shelf
x1

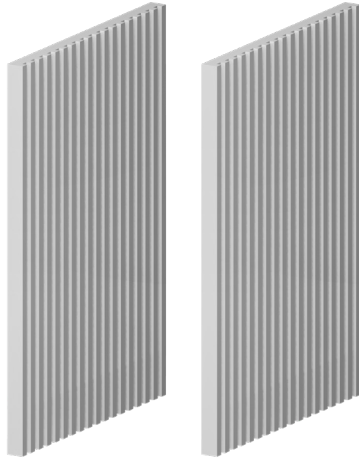


(B)
Middle Shelf
x1

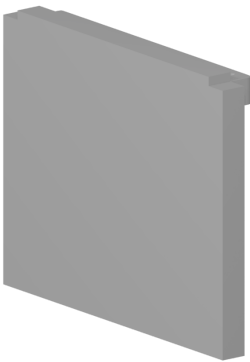


(C)
Bottom Shelf
x1

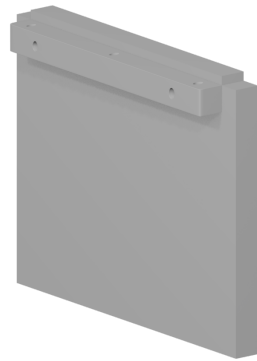
product parts



(D)
Legs
x2



(E)
Top compartment
vertical partition
x1



(F)
Bottom compartment
vertical partition
x1

what's included



(G) - Bolt
(8 x 40mm)
x18



(H) - Washer
(8 x 22mm)
x18



(I) - Lock Washer
(8.5mm)
x18



(J) - Allen key
(5mm)
x1

what's included



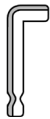
(K) - Bolt
(6 x 35mm)
x12



(L) - Washer
(6 x 18mm)
x12



(M) - Lock Washer
(6mm)
x12



(N) - Allen key
(4mm)
x1

assembly instructions

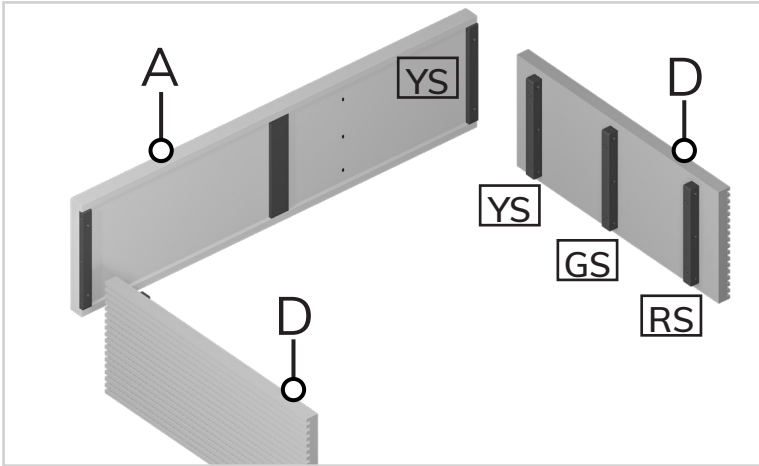
Friendly Tip: Take a deep breath going in. This may be a tricky part, but nothing too overwhelming. Just follow these steps to the T and the outcome will be worth it!



- ⓘ While assembling the product, tighten the bolts up to 50%. Once all parts are in place, only then fully tighten the bolts.

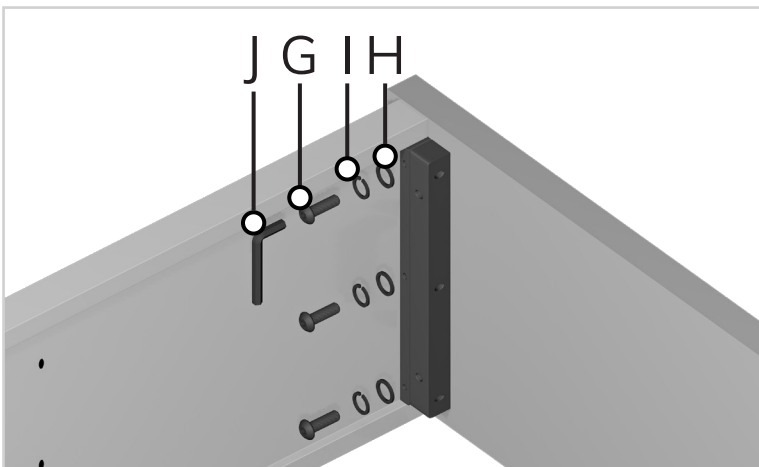
step 1:

Start by placing the top shelf (A) and table legs (D) sideways on the ground. Make sure to align all the shelves (A,B,C) in such a way that the Yellow (YS), Green (GS) and Red (RS) stickers align with their respective others.



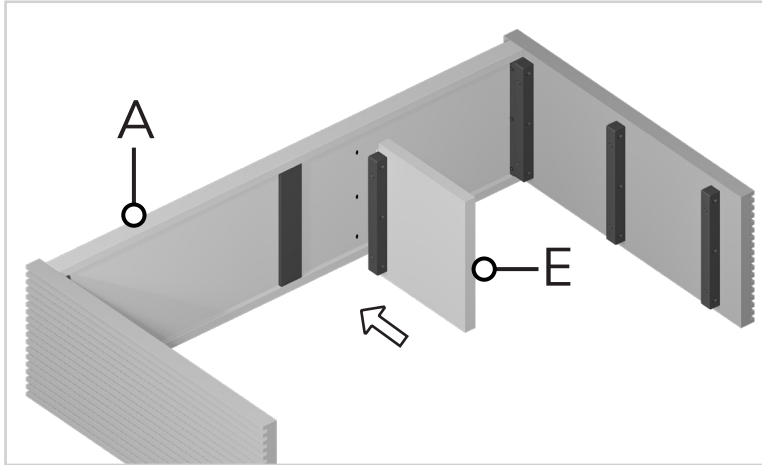
step 2:

Now, attach both legs (C) with the top shelf (A) by inserting washer (H), lock washer (I), and bolts (G) in the given slots. Tighten all the bolts upto 50% using allen key (J). Use the image below as reference.



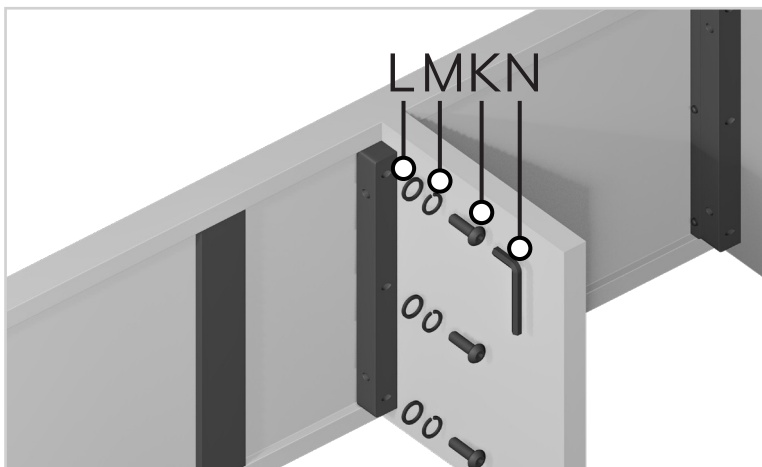
step 3:

Align the top compartment vertical partition (E) with the top shelf (A) as shown below.



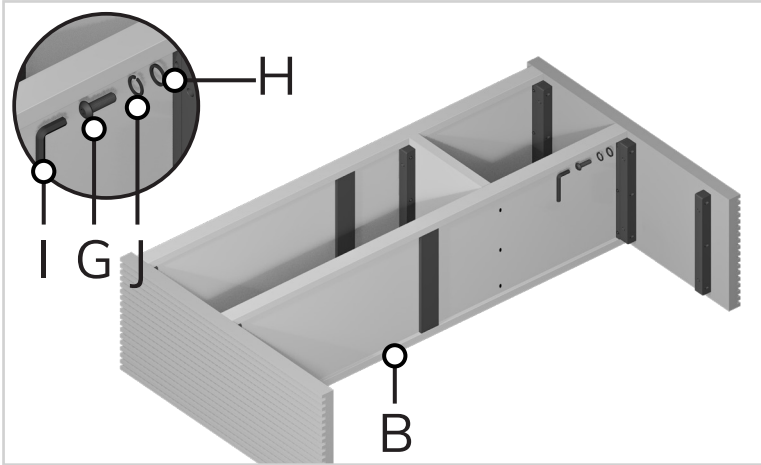
step 4:

Now, attach by inserting washer (L), lock washer (M), and bolts (K) in the given slots. Tighten all the bolts upto 50% using allen key (N). Use the image below as reference.



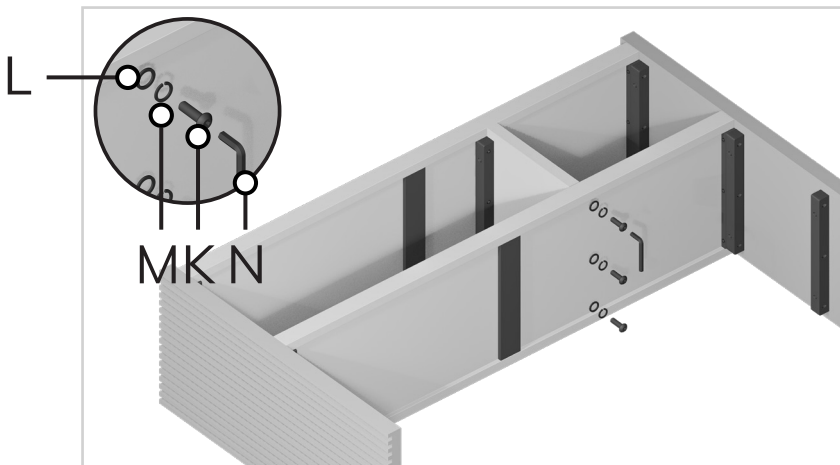
step 5:

Attach middle shelf (B) with the legs (D) by inserting washer (H), lock washer (I), and bolts (G) in the given slots. Tighten all the bolts upto 50% using allen key (J). Use the image below as reference.



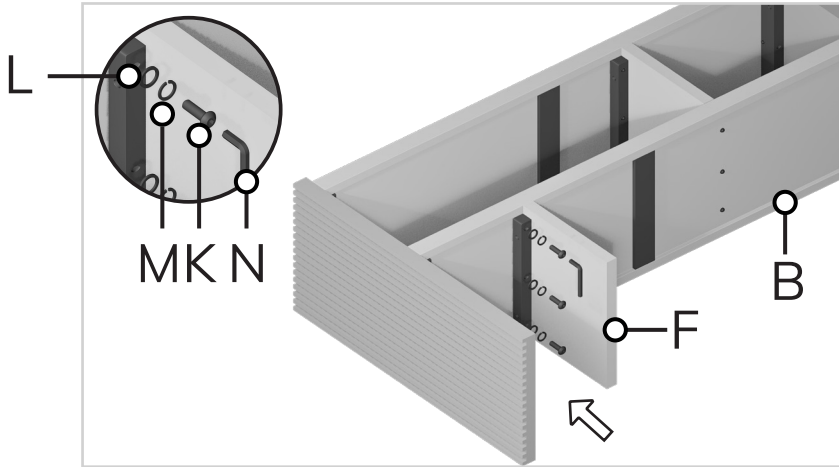
step 6:

Now, attach by inserting washer (L), lock washer (M), and bolts (K) in the given slots. Tighten all the bolts upto 50% using allen key (N). Use the image below as reference.



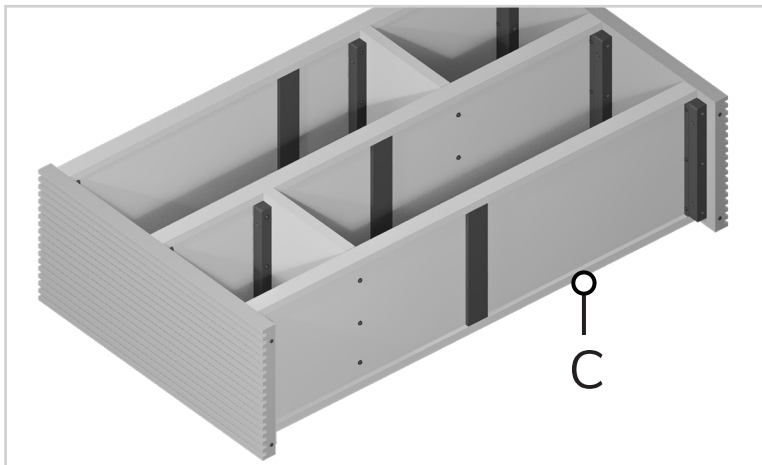
step 7:

Align the bottom compartment vertical partition (F) with the middle shelf (B) and attach by inserting washer (L), lock washer (M), and bolts (K) in the given slots. Tighten all the bolts upto 50% using allen key (N).



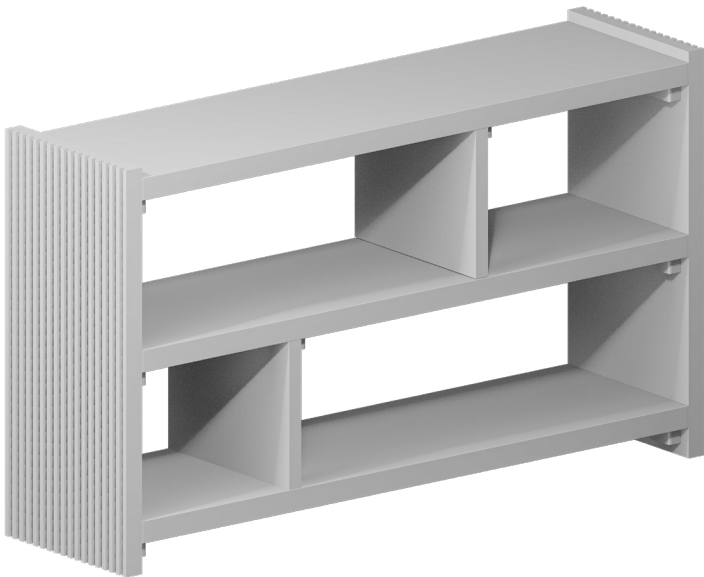
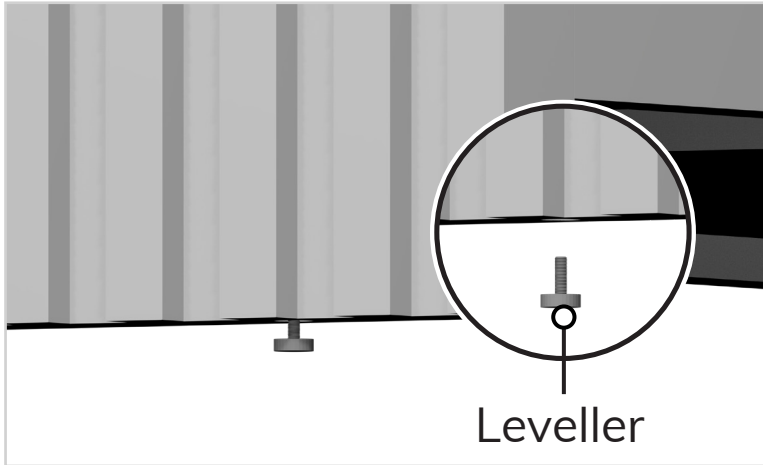
step 8:

Similarly, attach the bottom shelf (C) as we've done in the previous steps.



step 9:

If required, adjust the levellers according to the floor as shown in the image.



Voila! Your media table is now assembled and secure!