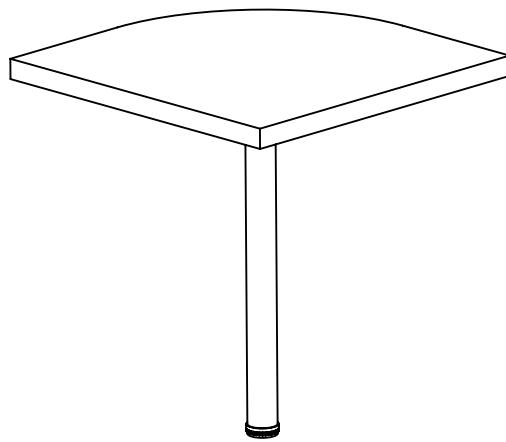


# ASSEMBLY INSTRUCTIONS



*Fine Furniture for every stage of life*

**CORNER DESK**

# ASSEMBLY INSTRUCTIONS

## ASSEMBLY TIPS:

1. Remove hardware from box and sort by size.
2. Please check to see that all hardware and parts are present prior to start of assembly.
3. Please follow attached instructions in the same sequence as numbered to assure fast & easy assembly.



### WARNING!

1. Don't attempt to repair or modify parts that are broken or defective. Please contact the store immediately.
2. This product is for home use only and not intended for commercial establishments.

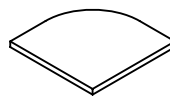


ASSEMBLY TIME

15 MINUTES

## PARTS IDENTIFICATION

A TOP PANEL



1 PC

## HARDWARE IDENTIFICATION

Z

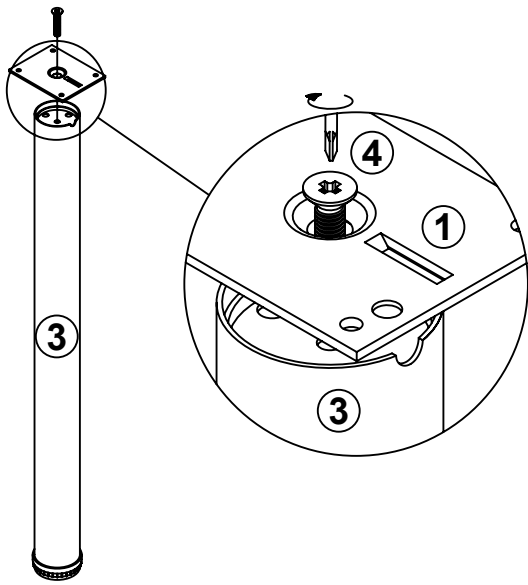
NO	DESCRIPTION	FIGURE	Q'TY
1	LEG PLATE BLK		1 PC
2	METAL PLATE BLK		4 PCS
3	IRON PIPE Ø 60x734mm SR		1 PC
4	BOLT M 8x39mm BLK		1 PC
5	SCREW Ø 4x16mm RBW		20 PCS

Z1,Z2,Z3 not included in blister packaging.

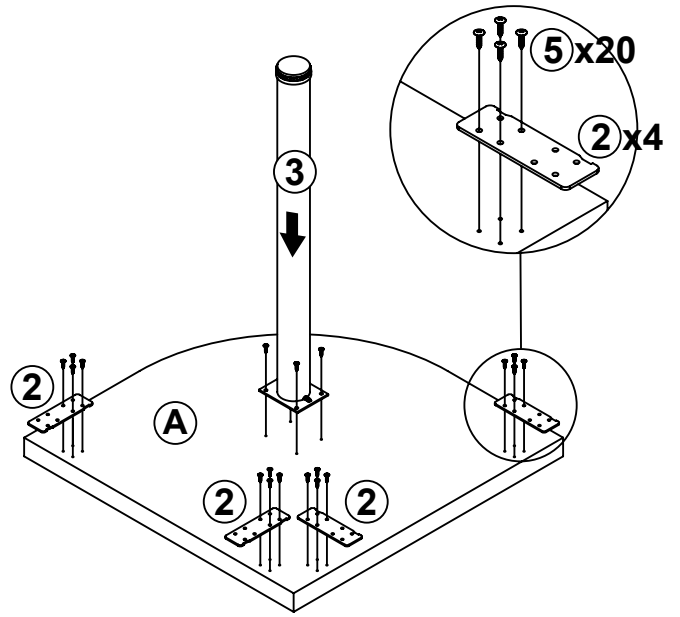
### NOTE:

Phillips head screw driver is required in the assembly process; however, manufacturer does not provide this item.

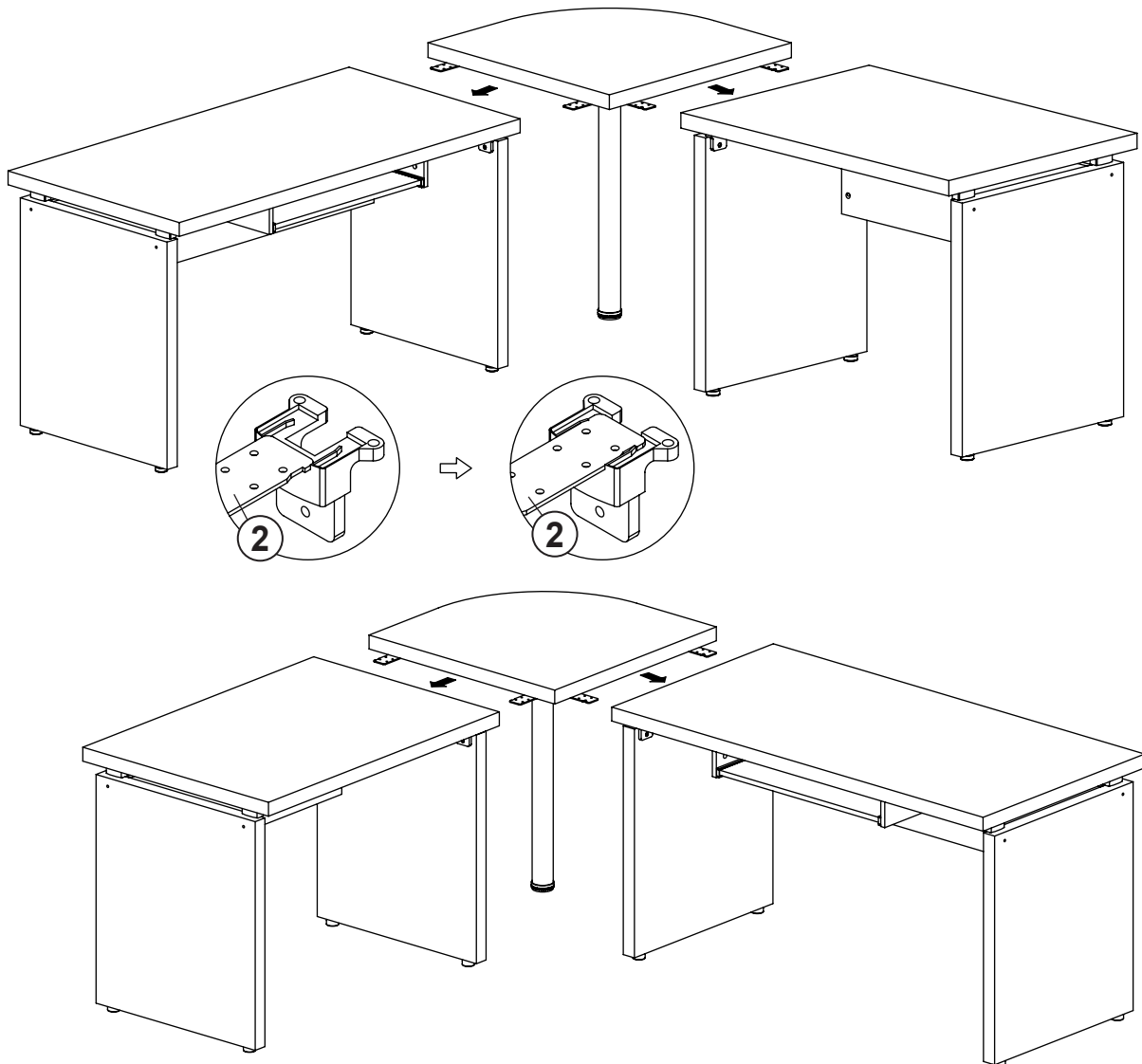
## STEP 1

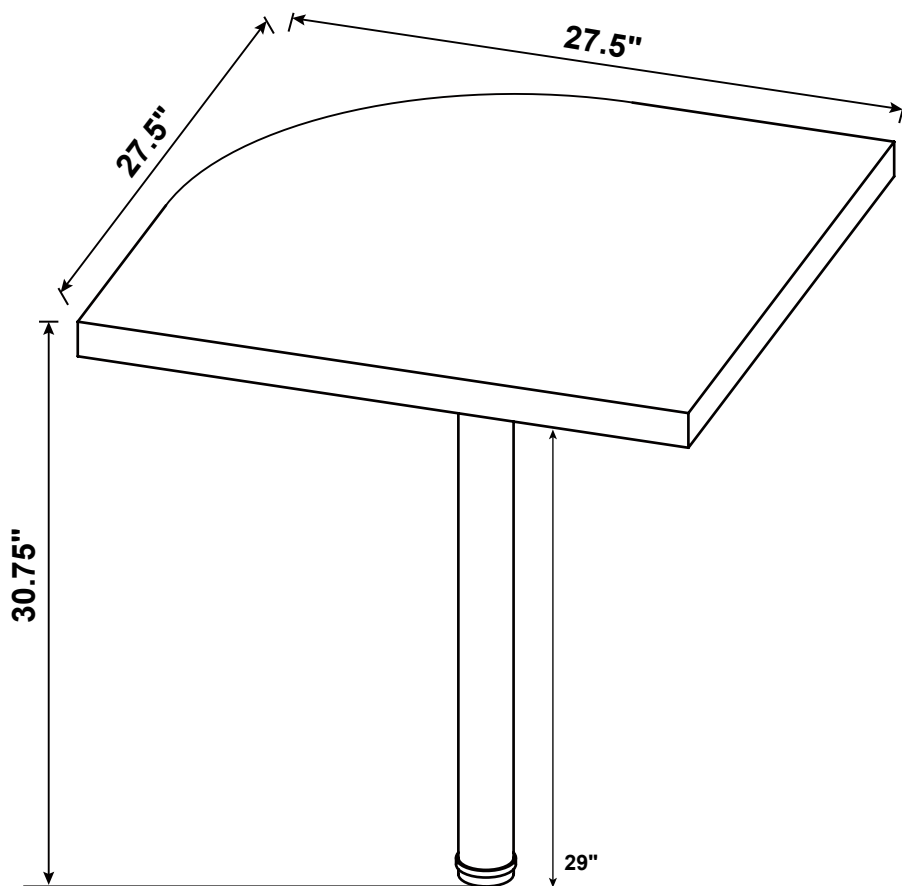


## STEP 2



## STEP 3





**Note :** Dimension tolerance  $\pm 5\%$