

Haunted Hill Farm®

Presents our ghoulish collection of Halloween décor from

FRASER HILL FARM

Thank you for choosing Haunted Hill Farm!
If you have any questions, concerns or suggestions, please
contact us directly.

Boo@HauntedHillFarm.com (Anytime)

1-888-840-4559

(9AM to 9PM Eastern Time, Monday - Friday)

(9AM to 5PM Saturday - Sunday)

In the unlikely event that you experience a problem, please provide pictures and a description of the problem, a receipt (if available), name and address of the purchaser and the name of retailer where you purchased the product.

Please do not return this item to the retailer.

See the full Haunted Hill Farm collection and get online support for assembly, troubleshooting, care and maintenance at:

www.HauntedHillFarm.com

Please follow the step by step guide and enjoy your Vampire Host!

HHVAMPHST-1FLSA



The model number of your item is printed on the side of your carton.
Always use this number to identify your item.

Thank you for your purchase of this quality Halloween decor. With proper use and care, your Halloween decor will provide you with years of enjoyment. Please follow the instructions on how to assemble and disassemble your item. If you should have any problems with your item, or you have any questions, **DO NOT** return it to the place of purchase. Please call our toll-free number: **1-888-840-4559** and a customer service representative will assist you. Enjoy your Holiday!



BEFORE ASSEMBLING, REMOVE ALL THE ABOVE PARTS FROM BOX. IF ANY PART IS MISSING, DO NOT ATTEMPT TO ASSEMBLE THE PRODUCT. CONTACT CUSTOMER SERVICE AT BOO@HAUNTEDHILLFARM.COM, OR BY PHONE FROM 9:00AM TO 5:00PM EST AT 1-888-840-4559.

CARE AND STORAGE INSTRUCTIONS

For best performance operate your item indoors. When not in use, store this product in its original packaging. Keep away from heat and moisture.

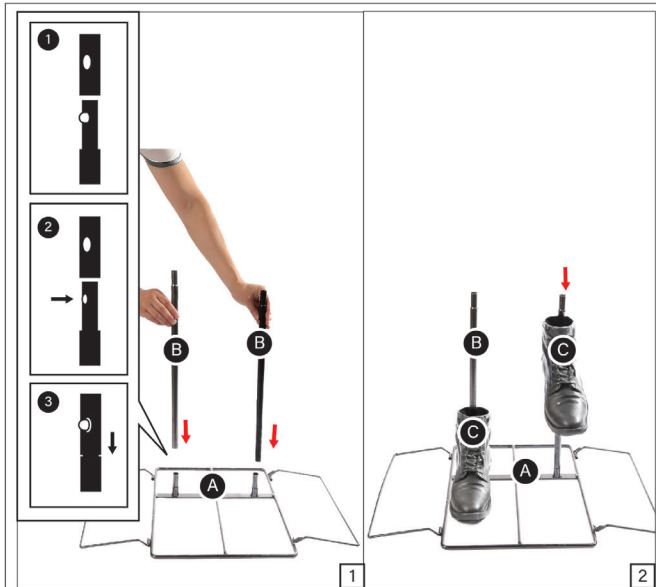
WARNING

This item is not a toy and should be used for decoration only. This item contains small parts that can be a choking hazard. Keep all plastic and wire parts away from children. Recommended for ages 14 and up.

1. Please use the adapter supplied by manufacturer.
2. Please assemble item according to instructions. Connect all wires according to matching color.
3. Children should be supervised by adults. Item should not be grabbed, as it becomes a tipping hazard. Keep all away from the adapter, as it heats up during operation.
4. Colors, style and contents may vary slightly from those shown on the package.

ASSEMBLY INSTRUCTIONS

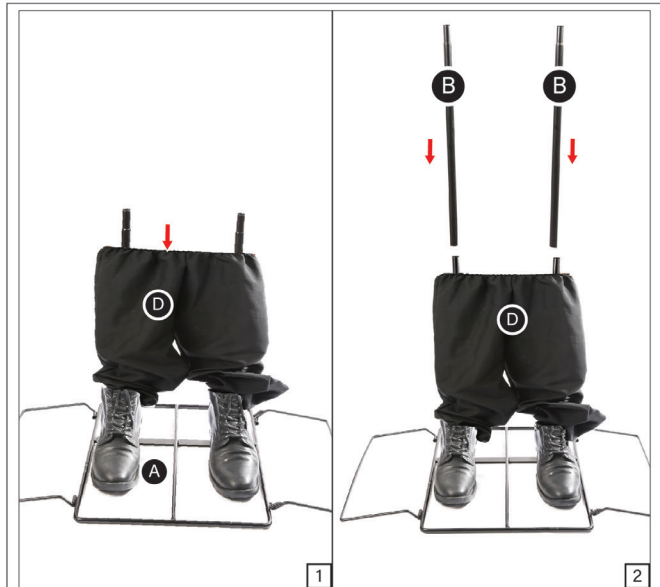
ASSEMBLY INSTRUCTIONS:



STEP 1

NOTE: The longer end of the (A) Base goes towards the front.

First, assemble x2 of the (B) Lower Support Poles to the (A) Base as shown and secure by aligning the quick-connect push buttons into the pre-drilled holes as shown in Figure 1. Slide the (C) Shoes onto the assembled (B) Lower Support Poles to rest upon the (A) Base as shown in Figure 2.



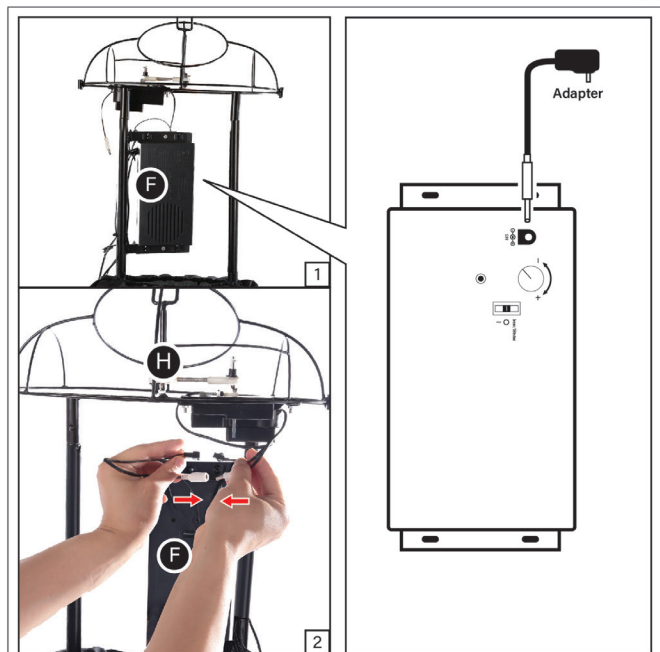
STEP 2

Lower the (D) Pants over the x2 (B) Lower Support Poles attached to the (A) Base through the leg openings as shown in Figure 1. Assemble the remaining x2 (B) Lower Support Poles to others as shown in Figure 2.



STEP 3

Attach the (E) Upper Support Pole and (F) Control Box Support Pole on top of the (B) Lower Support Poles. Lower the (G) Hip Hoop down over the (E) Upper Support Pole and the (F) Control Box Support Pole and attach through the slots located on the sides at the bottom of the (E) Upper Support Pole and the (F) Control Box Support Pole as shown in Figure 1. Attach the (H) Shoulder Frame on the (E) Upper Support Pole and the (F) Control Box Support Pole. Pull the (D) Pants up over the (G) Hip Hoop as shown in Figure 2.



Step 4

Now, plug the Adapter into the input receiving jack marked "DC 5.9V" on the Function Control Box.

Note: Do not plug the Adapter into power outlet until item assembly is completed. Connect the white and black cables available on the Function Control Box in the (F) Control Box Support Pole to the corresponding cables available on the motor of the (H) Shoulder Frame as shown in Figure 2



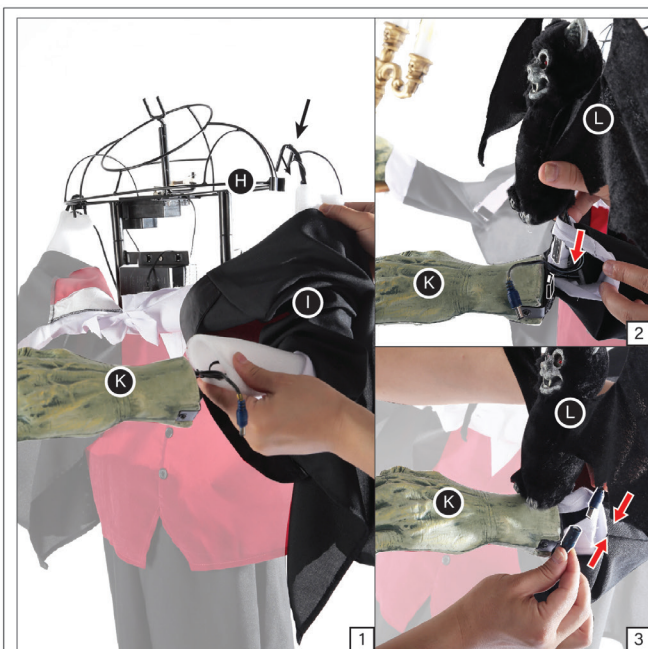
Step 5

Place the (I) Jacket over the (H) Shoulder Frame. The (I) Jacket opening should be at the back as shown in Figure 1. Connect the black sensor cable from the (I) Jacket to the available sensor cable on the Function Control Box as shown in Figure 2.



Step 6

Slide the (J) Right Arm with Candelabra up the right sleeve of the (I) Jacket and slide the forked hook available on the (J) Right Arm with Candelabra into the forked hook housing available on the (H) Shoulder Frame as shown in Figure 1. Ensure that the yellow wire available on the (J) Right Arm with Candelabra is also threaded through the right sleeve of the (I) Jacket. Connect this yellow cable to the yellow cable available from the Function Control Box as shown in Figure 2. Secure the right sleeve of the (I) Jacket to the (J) Right Arm with Candelabra by using the hook & loop closure provided as shown in Figure 3.



Step 7

Slide the (K) Left Arm up the left sleeve of the (I) Jacket and slide the forked hook available on the (K) Left Arm into the forked hook housing available on the (H) Shoulder Frame as shown in Figure 1. Then slide the metal bar at the bottom of the (L) Bat through the hole in the sleeve of the (I) Jacket and into the slot housing available at the wrist of the (K) Left Arm as shown in Figure 2. Connect the blue cable available from the (K) Left Arm to the blue cable from the (L) Bat as shown in Figure 3.



Step 8

Connect the cable available from the (K) Left Arm to the cable from the Function Control Box as shown in Figure 1. Slide the forked hook housing available from the (M) Head onto the forked hook available at the top of the (H) Shoulder Frame as shown in Figure 2.



Step 9

Connect the cables from the (M) Head to the corresponding cables from the Function Control Box by color as shown in Figure 1. Then close the back of the (I) Jacket using the hook & loop closures provided as shown in Figure 2.

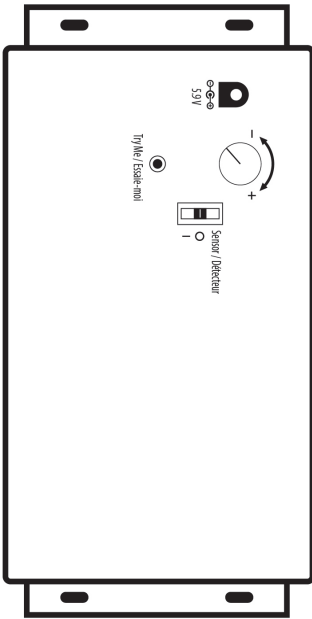


Step 10

Draper the (N) Cloak over the (M) Head so it rests over the (I) Jacket. Secure the (N) Cloak in place by using the hook & loop closures as shown in Figure 1.





Your Vampire Host is now fully assembled. Plug in and turn on to let the fun begin!

OPERATION INSTRUCTIONS



1. Plug the Adapter into a standard power outlet and adjust the settings on the Function Control Box, located on the (F) Control Box Support Pole, as desired.

2. Settings:

- | | |
|---|---|
|  | This switch mode will only activate lights, sound, and animation when the Infra-red (IR) sensor is activated. The item will operate for 1 audio-cycle with each sensor activation. The Infra-red (IR) sensor will activate when someone comes within an 80-degree angle from left-to-right, as well as from above and below. The Infra-red (IR) sensor has a range of up to 2 m / 6.5 ft. |
|  | (OFF) This switch mode either turns off the item or allows the item to be activated only if triggered by using a Step Here Pad (Not Included). The Item will operate for one audio cycle with each Try Me activation. |
|  | (ON) This switch mode will continually operate the lights, sound, and animation of the item. |
|  | Raise or lower the volume using the volume control turn dial, turn and click all the way down to turn the volume off. |

This device complies with Part 15 of the FCC Rules. Operation is subject to the following two conditions: (1) This device may not cause harmful interference, and (2) this device must accept any interference received, including interference that may cause undesired operation.

CAUTION: Changes or modifications not expressly approved by the party responsible for compliance could void the user's authority to operate the equipment.

NOTE: This equipment has been tested and found to comply with the limits for a Class B digital device, pursuant to Part 15 of the FCC Rules. These limits are designed to provide reasonable protection against harmful interference in a residential installation. This equipment generates, uses and can radiate radio frequency energy and, if not installed and used in accordance with the instructions, may cause harmful interference to radio communications. However, there is no guarantee that interference will not occur in a particular installation. If this equipment does cause harmful interference to radio or television reception, which can be determined by turning the equipment off and on, the user is encouraged to try to correct the interference by one or more of the following measures: Reorient or relocate the receiving antenna. Increase the separation between the equipment and receiver. Connect the equipment into an outlet on a circuit different from that to which the receiver is connected. Consult the dealer or experienced radio/TV technician for help.

SAFETY INSTRUCTIONS -SAVE THESE INSTRUCTIONS DANGER-TO REDUCE THE RISK OF FIRE OR ELECTRIC SHOCK CAREFULLY FOLLOW THESE INSTRUCTIONS

The important safety instructions shall be provided with a power unit and include those items in the following list that are applicable. The statement **"READ AND FOLLOW ALL SAFETY INSTRUCTIONS"** shall be prominently displayed and precede the list, and the statement **"SAVE THESE INSTRUCTIONS"** shall be prominently displayed and follow the list. The word **"WARNING"** shall be entirely in upper case letters.

When using electrical products, basic precautions should always be practiced including the following:

READ AND FOLLOW ALL SAFETY INSTRUCTIONS.

Read and follow all instructions that are on the product or provided with the product.

For a cord-connected or direct plug-in power unit, do not use an extension cord.

Reference the National Electrical Code, NFPA 70, specifically for the installation of wiring and clearances from power and lighting conductors.

Installation work and electrical wiring must be done by qualified person(s) in accordance with all applicable codes and standards, including fire-rated construction.

For a cord-connected or direct plug-in power unit, do not install or use within 10 feet of a pool.

IMPORTANT SAFETY INSTRUCTIONS



Warnings

- This product is for decoration only and is not a toy. Small parts and choking hazard. Use caution with children under the age of 14.
- Do not position the decoration near candles, sources of heat, or in direct sunlight.
- The decoration cannot be connected to the power supply directly.
- Decoration should be on a level, stable surface to prevent it from falling over.
- This product is fragile and should be assembled with care.
- Surface washable only.
- Please follow the steps and requirements specified in the instruction to ensure safety and reliability during the installation.

WARNING: Risk of Electric Shock. When used outdoors, install only to a covered Class A GFCI protected receptacle that is weatherproof with the power unit connected to the receptacle. If one is not provided, contact a qualified electrician for proper installation.

Ensure that the power unit and cord do not interfere with completely closing the receptacle cover.

WARNING: Risk of Fire. Installation involves special wiring methods to run wiring through a building structure. Consult a qualified electrician.

WARNING

**DO NOT TURN ITEM ON UNTIL YOU HAVE COMPLETELY FINISHED ASSEMBLY.
STAY CLEAR OF ITEM WHILE OPERATING.
DO NOT PLACE ITEM ON UNEVEN GROUND.
DO NOT PLACE WEIGHT ON ITEM WHILE IN OPERATION.**

Storage tips: We suggest saving the carton for storing your figurine. Store in a cool, dry area where the temperature does not exceed 100°F.

1-YEAR LIMITED WARRANTY

"Limited" Warranty Program

For a period of one (1) year after purchase, Haunted Hill Farm ("Manufacturer") will either repair or replace defective components in accordance with this Limited Warranty.

Sales and use taxes, plus shipping and handling charges are the responsibility of the consumer.

This warranty is between Manufacturer and the original purchaser and is valid only when accompanied by the original purchaser's sales receipt showing original date of purchase and location of purchase. Replacements under this warranty revert back to the date of original purchase for future warranty.

Manufacturer or its authorized dealer can accept or reject warranty claims based on its findings. This warranty applies in normal residential use only, where an issue with the product is due to a defect in material or workmanship. Manufacturer can make substitutions as required of materials, components, and sub-components of comparable value and utility. This warranty is limited to product repair or replacement (to be determined solely by Manufacturer). Warranty return is limited to only the single affected component.

This warranty covers only manufacturing defects and does not cover normal wear and tear, abuse or misuse, including: water damage, chemical damage, exposure to extreme heat or cold, abrasion or excessive weight. This product is intended to be used with standard ornaments only. This warranty is invalid if the product is not used for intended purpose. Manufacturer disclaims liability for any aspect of installation and any inconvenience caused by a defective part or component.

Certain items are not covered by this warranty. These include, but are not limited to the following:

1. Components subjected to abuse, including abuse intended to simulate failure.
2. Damages caused by retailer, shipper or installation crew (such as scratches, dents, tears, etc.).
3. Any part which merely exhibits normal wear yet functions essentially as new, including stretching of materials and stitching.
4. Tears, punctures, scratches or any damage caused by improper installation or use.
5. Items sold "as is" or floor models.

To make a claim, send a copy of the original sales receipt along with a brief description of the problem to the email address below. Please include your email address and daytime telephone or cell phone #. All items maybe charged actual freight and handling costs. Repairs or replacement will be made at the Manufacturer's option.

THIS IS THE ENTIRE EXCLUSIVE EXPRESS LIMITED LIABILITY. THE MANUFACTURER NEITHER MAKES NOR IS RESPONSIBLE FOR ANY OTHER WARRANTIES, EITHER EXPRESS OR IMPLIED, INCLUDING THOSE OF RETAILING DEALERS. THIS EXCLUSIVE REMEDY IS LIMITED TO RECEIPT OF A CREDIT IN CONNECTION WITH THE REPAIR OR REPLACEMENT OF ANY PRODUCT OR COMPONENT DEEMED TO BE DEFECTIVE UNDER THE TERMS AND CONDITIONS AS STATED IN THIS WARRANTY. NEITHER HAUNTED HILL FARM, THE PRODUCT MANUFACTURER NOR ITS AGENTS SHALL BE LIABLE IN ANY CASE FOR INCIDENTAL, INDIRECT, SPECIAL OR CONSEQUENTIAL DAMAGES RESULTING FROM THE USE OF THIS PRODUCT OR ARISING OUT OF ANY BREACH OF THIS WARRANTY OR NEGLIGENCE EVEN IF IT HAS BEEN ADVISED OF THE POSSIBILITY OF SUCH DAMAGES. EXCEPT AS OTHERWISE MAY BE REQUIRED BY LAW, THERE ARE NO OTHER EXPRESS OR IMPLIED WARRANTIES OTHER THAN THE WARRANTY DESCRIBED HEREIN, AND ALL OTHER WARRANTIES, INCLUDING ANY IMPLIED WARRANTY OF MERCHANTABILITY OR FITNESS FOR A PARTICULAR PURPOSE ARE EXPRESSLY DISCLAIMED.

Boo@HauntedHillFarm.com