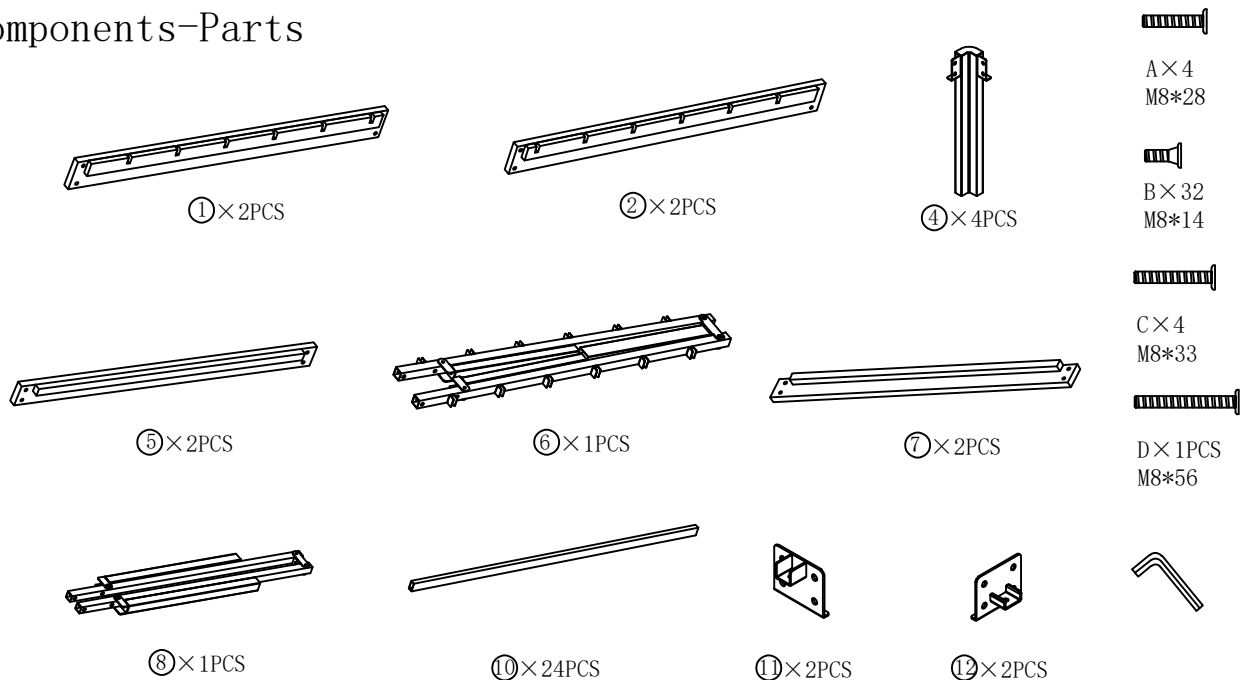


Bamboo Bed Frame Set-up Instruction

Size: King (05-16/18)

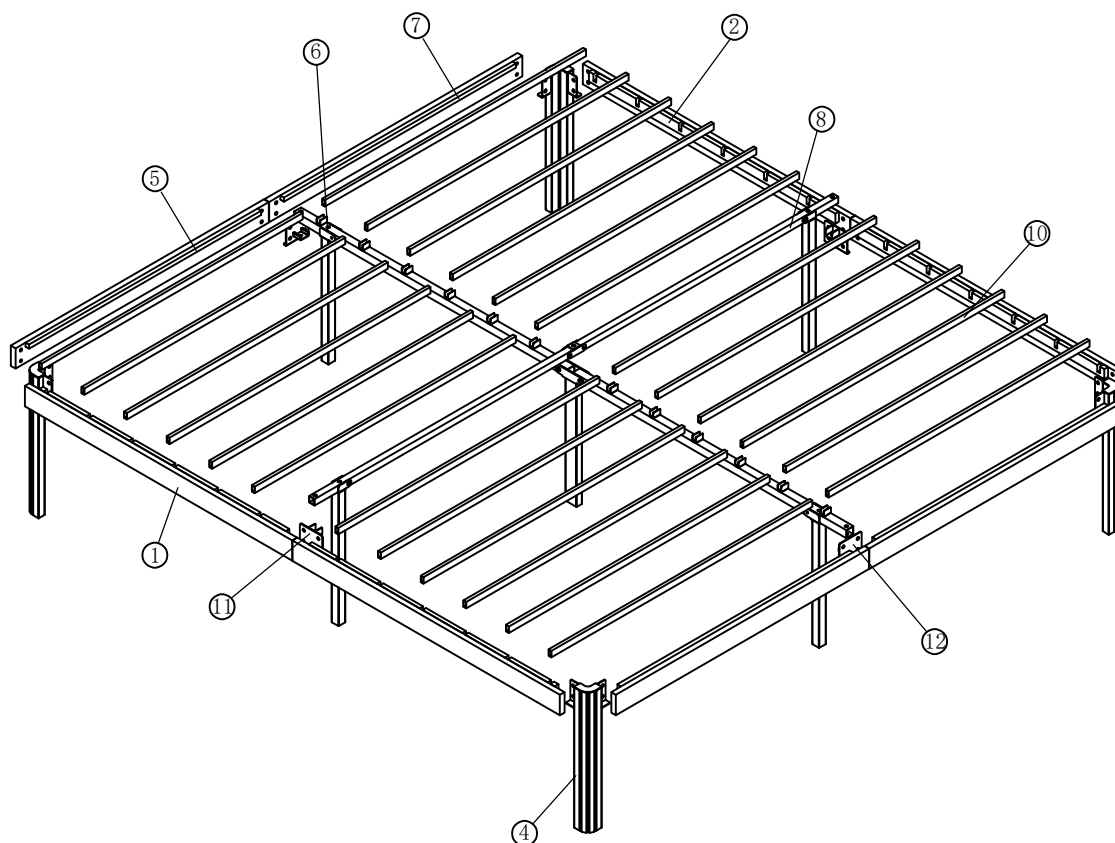
If you have any questions about the product, please don't hesitate to contact us.
You can reach us through your order. Thanks for your support!

Components-Parts

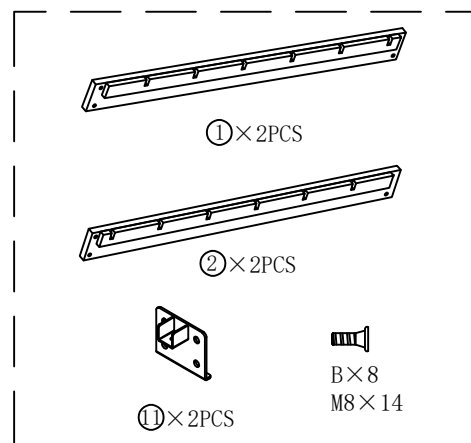
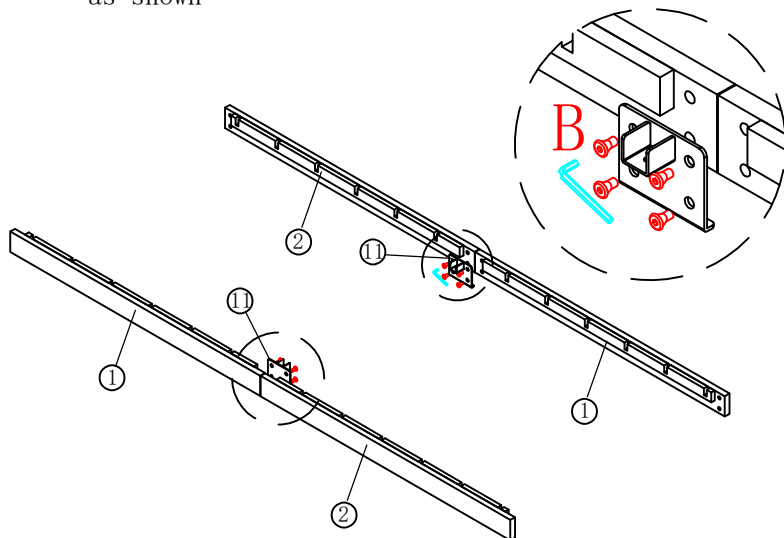


Spare: A×1、B×1、C×1、E×1

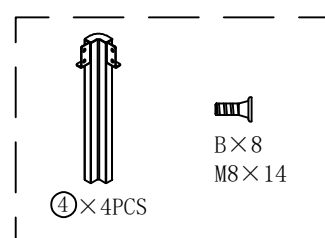
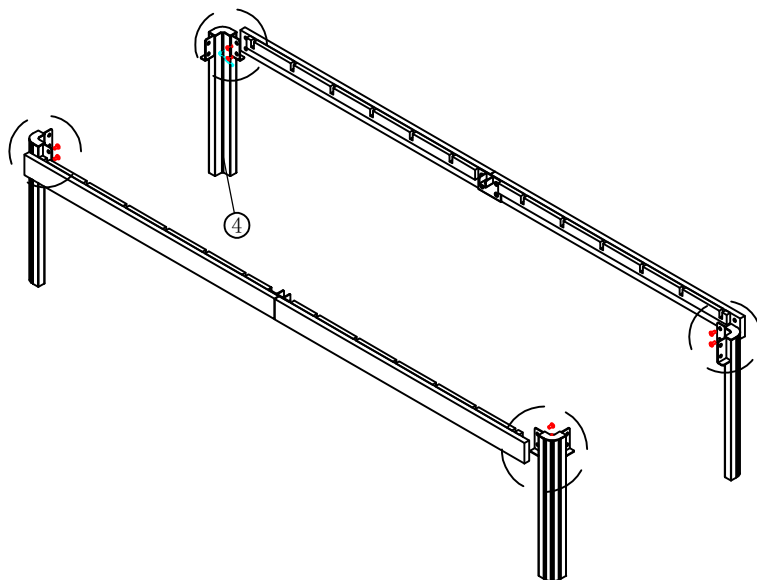
Component Distribution - Easy Assembly in 7 Steps



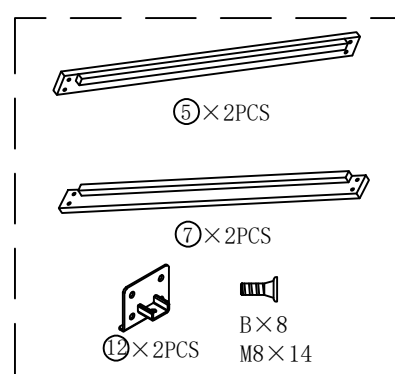
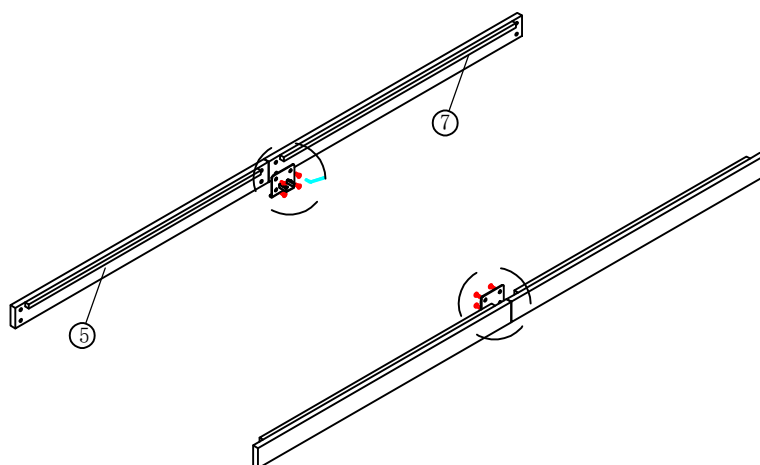
Step1:Take out parts ①&② & ⑪; Joint them with screws as shown



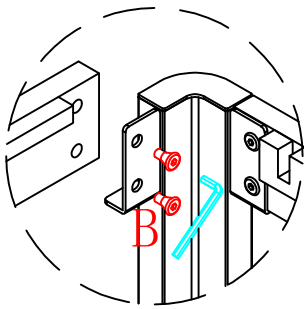
Step2:Joint four corners with screws as shown



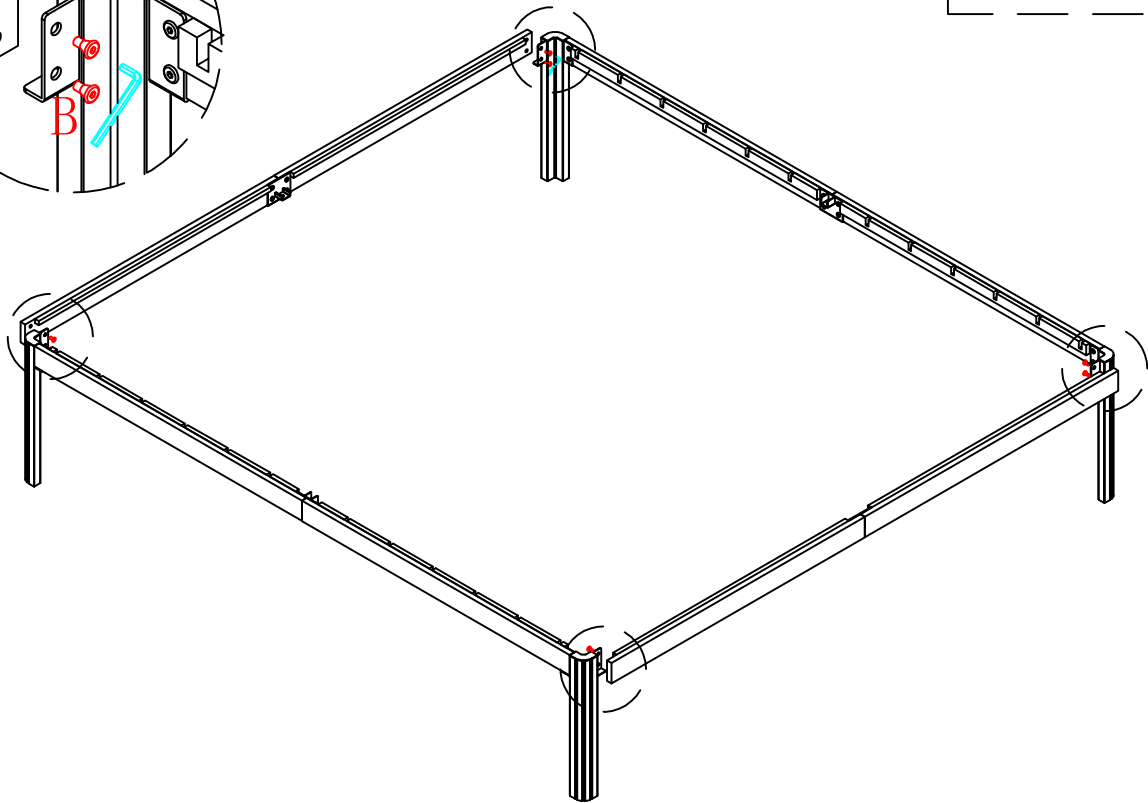
Step3:Joint parts with screws as shown



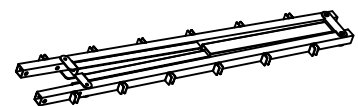
Step4:Joint parts with screws as shown



B×8
M8×14

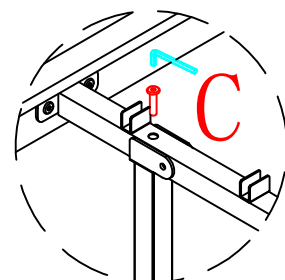
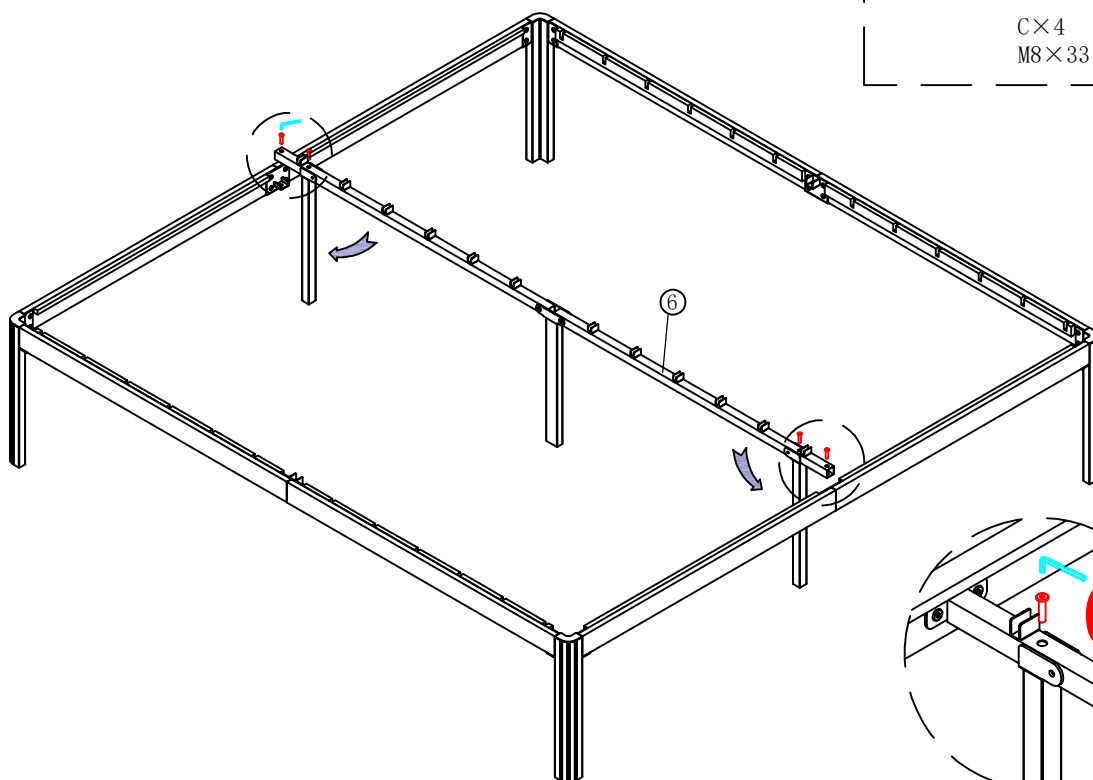


Step5:Joint parts ⑥ with screws as shown

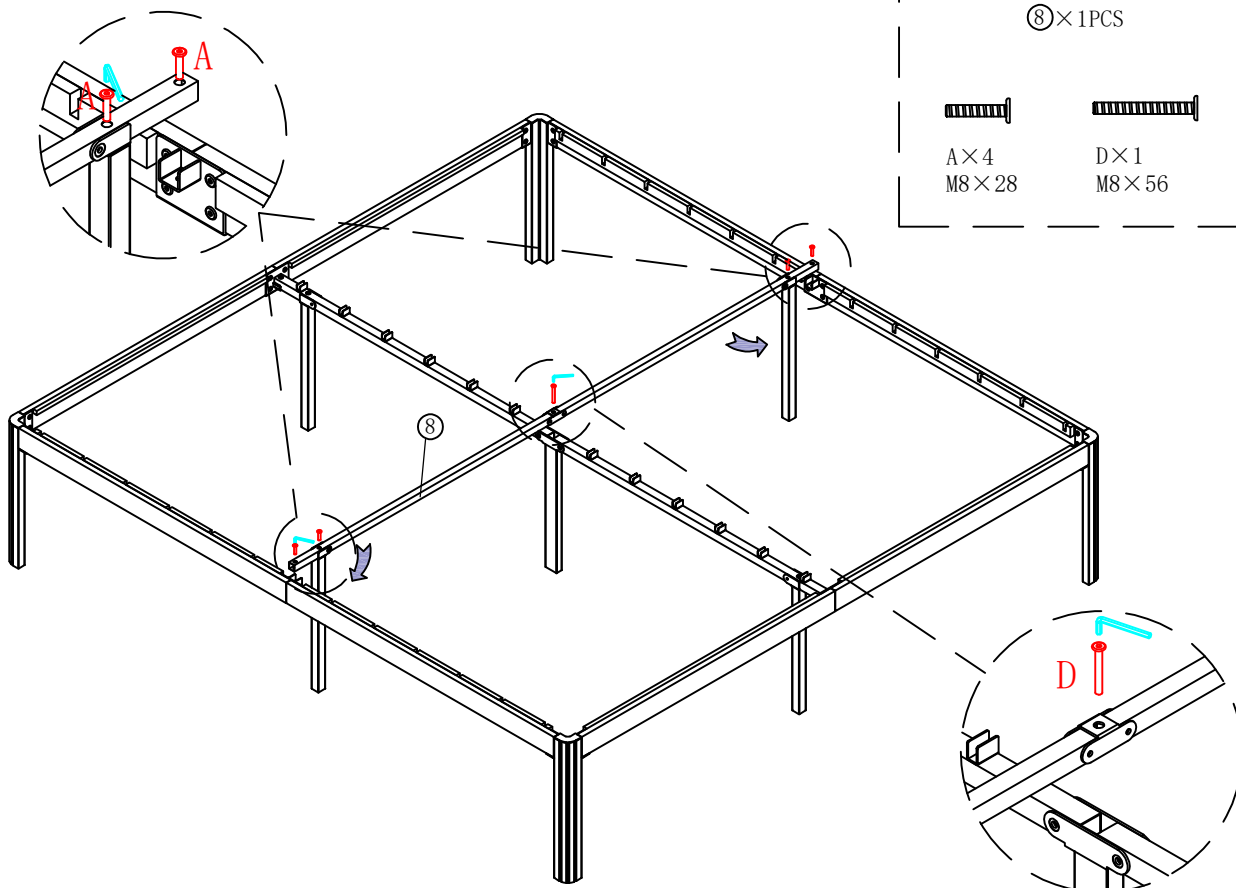


⑥×1PCS

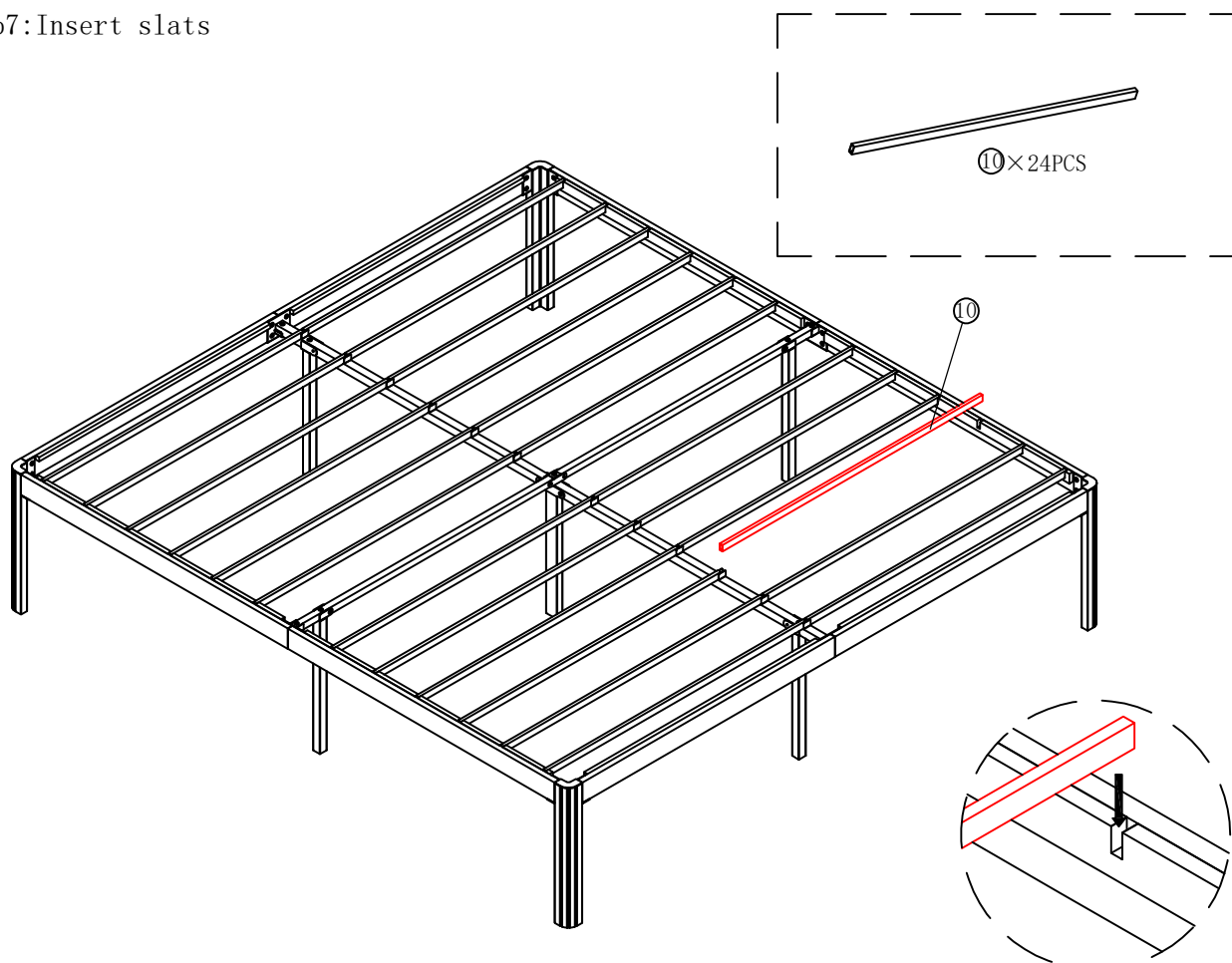
C×4
M8×33



Step6:Joint parts ⑧ with screws as shown



Step7:Insert slats



In the last step, please make sure all the screws are tightened.