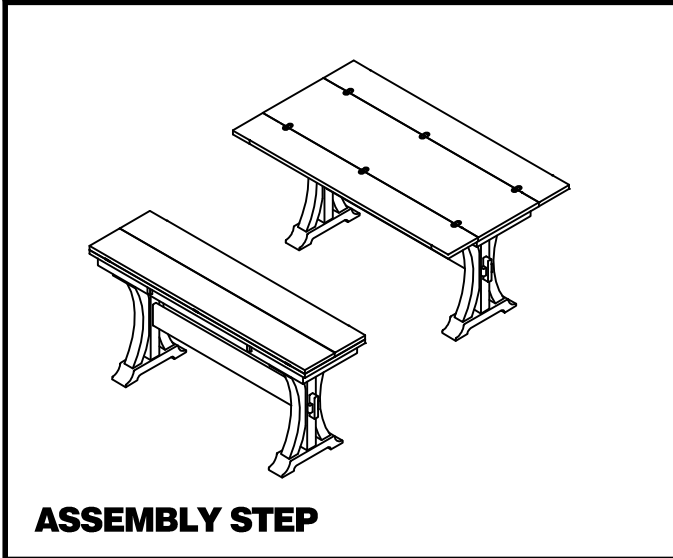


ASSEMBLY INSTRUCTION

DESCRIPTION Flip Lid Sofa Table

Thank you for purchasing this quality product. Be sure to check all packing material carefully for small parts which may have come loose inside the carton during shipment. Identify and count all parts and compare with the parts list below:

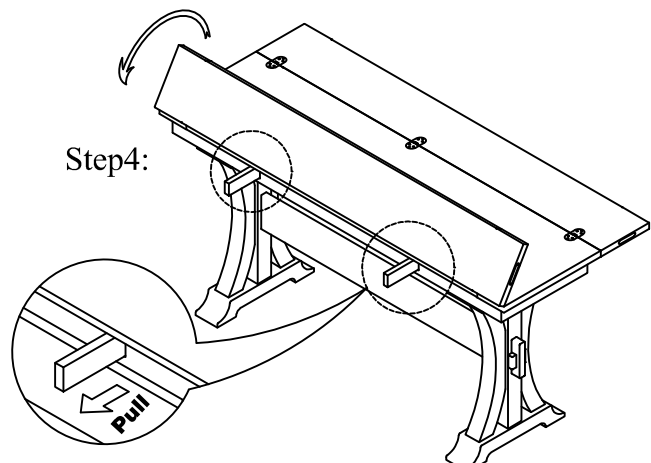
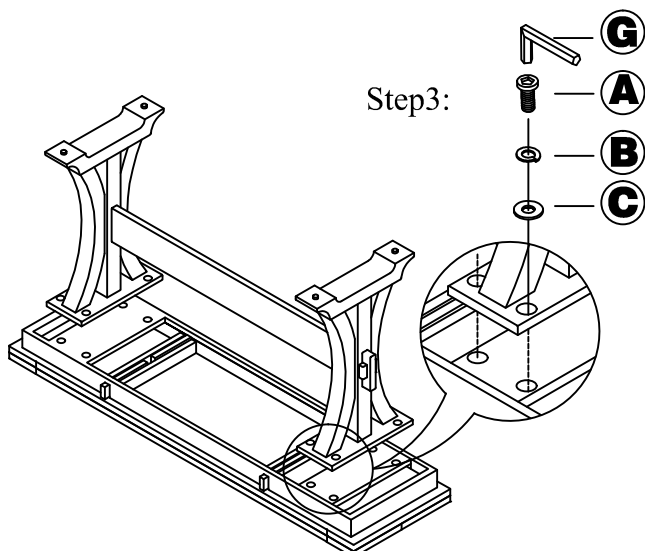
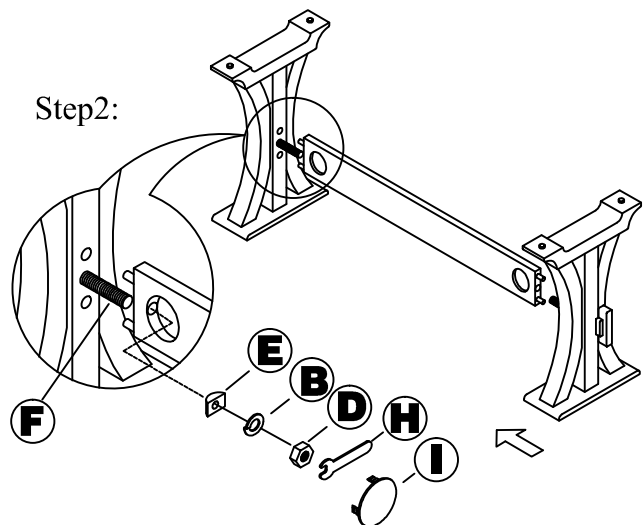
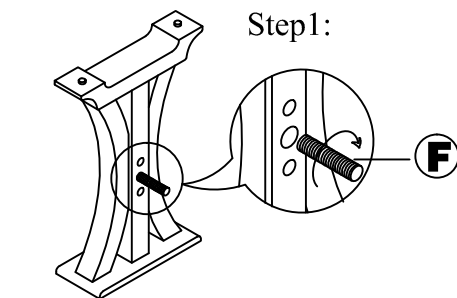


HARDWARE LIST

NO.	SKETCH	HARDWARE	Q'TY
A		Bolt 5/16" x 1-1/2"	8 pcs
B		Spring Washer 5/16"	10 pcs
C		Flat Washer 5/16" x 19mm	8 pcs
D		Nut 5/16"	2 pcs
E		T-nut	2 pcs
F		Bolt 5/16" x 2-1/2"	2 pcs
G		Allen Key 5mm	1 pc
H		Wrench	1 pc
I		Plastic Cap	2 pcs

PARTS LIST

NO.	SKETCH	PART	Q'TY
①		Top	1 pc
②		Leg Frame	2 pcs
③		Stretcher	1 pc



NOTE: DO NOT TIGHTEN ALL THE BOLTS UNTIL THEY ARE INSTALLED IN CORRESPONDING HOLES!