



## WARNING

PLEASE READ ALL SAFETY WARNINGS AND INSTRUCTIONS CAREFULLY. PLEASE INSPECT ITEM S CAREFULLY BEFORE ATTEMPTING TO INSTALL.





## QUICK RESPONSE SERVICE




We constantly strive to provide the high-quality products and excellent customer service to achieve our customer satisfaction.

## SPECIFICATION PARAMETERS

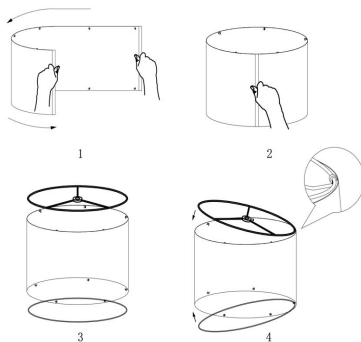
\* Material: Metal and Fabric

## PACKING LIST

PIECE	DESCRIPTION	PICTURE	QUANTITY
A	Lamp Body		2X
B	Socket Assembly		2X
C	Harp		2X
D	Lamp Shade		2X

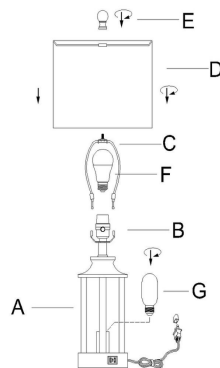
PIECE	DESCRIPTION	PICTURE	QUANTITY
E	Finial		2X
F	Bulb		2X
G	Night light Bulb		2X

## INSTALLATION STEPS



Step 1: Attach the round lampshade

Step 2: Clip the round metal piece in the hook



Step 1: Fasten Socket Assembly(B)onto Lamp body(A).

Step 2: Squeeze the harp end (C) and inset into the saddle.

Step 3: Install the bulb(F) on the socket.

Step 4: Assemble the lampshade(D).

Step 5: screw the finial(E) into the harp(C).

## WARRANTY POLICY

Warranty: 1 Years Warranty, We offer a 24 hour online service, if you have any questions, please feel free to contact us.