

# CEILING LIGHT USER MANUAL



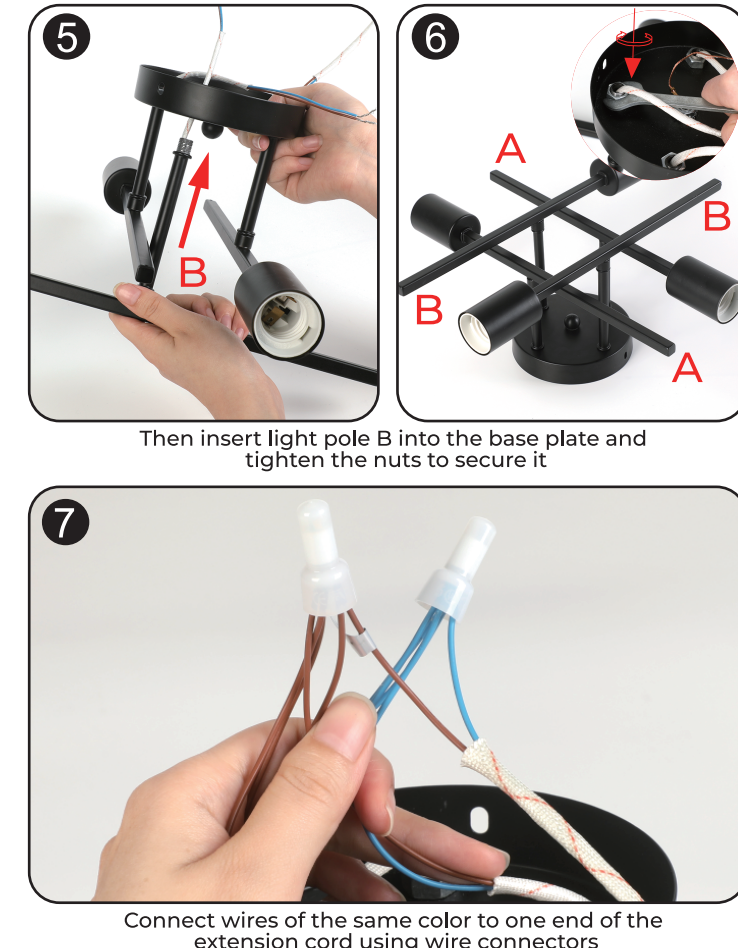
CE FC RoHS ♻️

## COMPONENTS AND PARTS



• Read instructions carefully and turn electricity off at main circuitbreaker panel before installation.  
 • Before installation, make sure all parts are included. If any part is missing or damaged, do not attempt to assemble, install or operate the product.

## INSTALLATION STEPS



**Pls Note:**  
 1. Please install it by a licensed electrician.  
 2. Please cut off the electricity supply when you install it.  
 3. Please use it in dry environment.  
 4. E26 \*4 light holder (light sources are NOT included).