

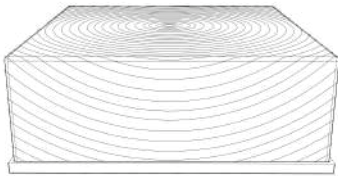
Coffee Table

Assembly instructions

CAUTION:

Carefully remove all of the components from the packaging and set aside for assembly.
Assemble on a soft surface to prevent scratching the finish.

Packing list:



1 unit table



4 table legs



4 screws

CAUTION:

Tools Required: Phillips
head screwdriver or screw bit



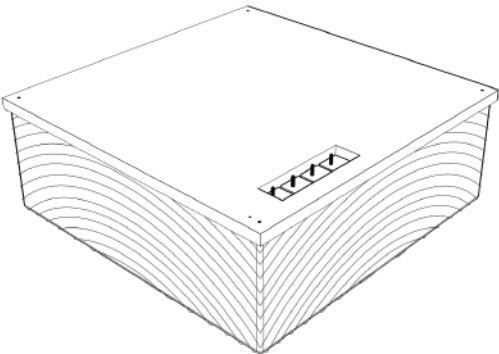
screwdriver



cordless screwdriver.

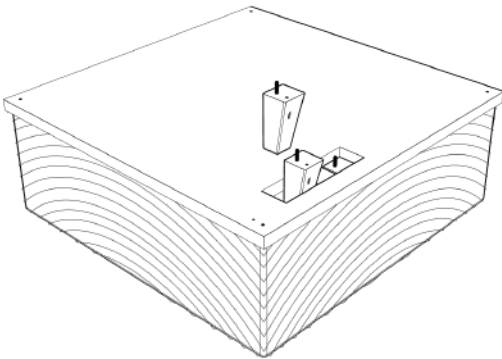
Assembly Steps:

01



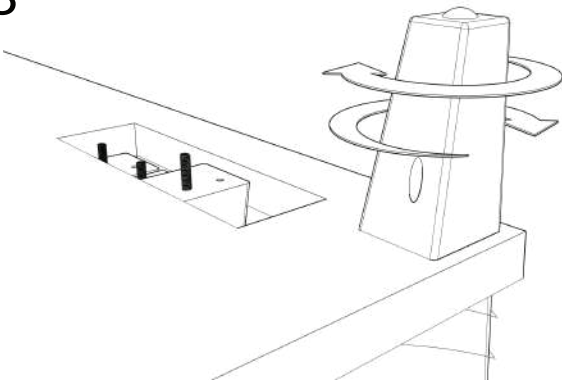
Turn table bottom side up onto soft, smooth surface.

02



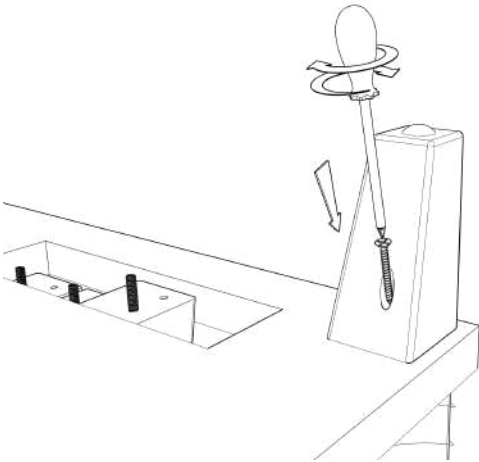
Remove legs from recessed area on underside of table.

03



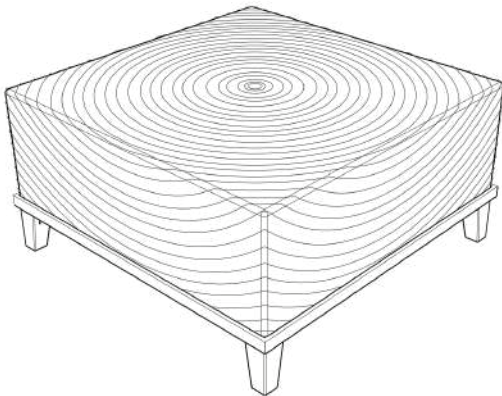
Install all four legs by turning clockwise into threaded insert.

04



Once legs are snug and square to corner of table,
insert screw and tighten into pilot hole.

05



Once all four legs attached, turn table right side up
and enjoy.