

EL2699LDICA

3" Low Voltage New Construction
Housing with 12V Thermally Protected
Magnetic Transformer

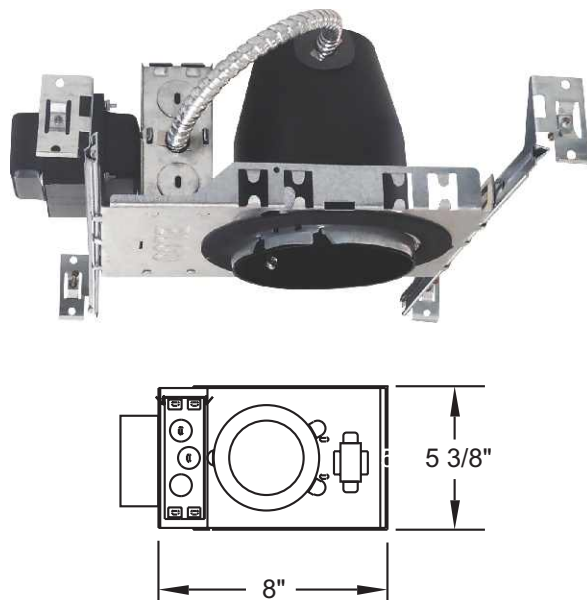
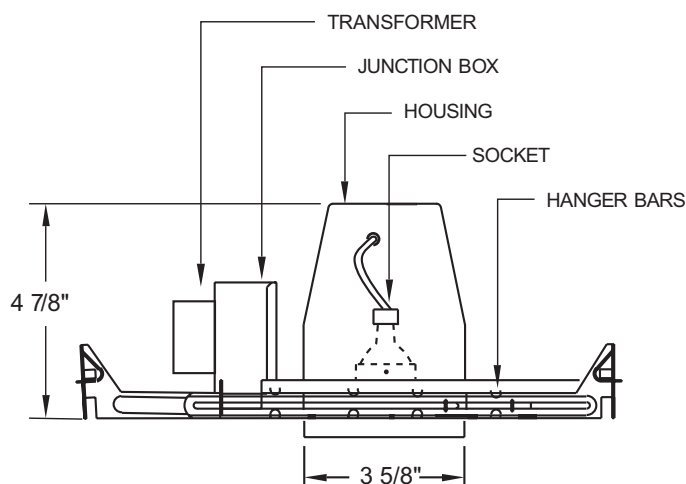
PROJECT INFORMATION:

Project Name: _____

Fixture Type: _____

Date: _____

DIMENSIONS



PRODUCT SPECIFICATIONS

- Single wall IC construction, for use in insulated ceilings.
- 4 7/8" height allows for use in 2 x 6 construction.
- Adjustable housing accommodates up to 1 1/4" ceiling thickness.
- Housing meets restricted air flow requirement (per ASTM E-283).
- CA Title 24 compliant (as low efficiency luminaire).
- Trims sold separately.

Lamp: 14W Max, 12V, MR16 GU/GX5.3 bi-pin LED/Halogen (not included, by others)

Transformer: 120V/12V Magnetic AC.

Lamp Holder: MR16 GU/GX5.3 bi-pin socket.

Labels: U.L. listed for damp locations
U.L. listed for feed through

Note: Use only dimmers specifically designed for use with magnetic transformer. Low voltage luminaires may produce audible sound when use with dimmers.

INSTALLATION

Junction Box: Pre-wired junction box provided with 1/2" and 3/4" knockouts. Maximum (8) No. 12 AWG branch circuit conductors (4 in, 4 out). Junction box provided with removable access plates.

Mounting: Captive bar hangers span 24" and can be repositioned 90°. Housing accommodates various ceiling thickness.

Mounting Frame: Stamped galvanized steel construction for corrosion resistance

CATALOG NUMBER

Example: EL2699LDICA

See trims page for variety of trims available

