



LED LIGHTS

USER MANUAL CHRISTMAS TREE



A long time ago, on a winter night, a Christmas tree illuminated the dreams of a small family, marking the beginning of our brand story.



Over a decade ago, our founder, Audrey, crafted the first Christmas trees in a small village in China with dedication and creativity. In the early days, Audrey and his team worked tirelessly for more than ten hours a day, hand-cutting leaves, meticulously assembling branches, and overcoming countless challenges to bring the joy and warmth of the holiday season to others. This spirit of relentless effort has become the essence of our brand.

Today, we are a leader in the medium and high-end Christmas tree production industry, exporting tens of thousands of Christmas trees worldwide each year. Despite the changing times, our commitment remains steadfast. We use high-quality materials to perfect every detail, striving to make each family's Christmas truly special. May our Christmas trees continue to accompany happy families, welcoming the dawn of the new year together.



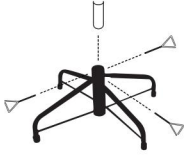
ASSEMBLY INSTRUCTIONS

WARNING - Risk of Fire and Electric Shock



- 1. Read carefully all instructions and warning tags.**
- 2. Do not place near source of fire or heat.**
- 3. Disconnect tree's light sets from power before starting.**
- 4. Keep wires clear of being pinched or cut during assembly or installation. Discard sets with cut or pinched insulation.**
- 5. Do not press or grasp bulbs during assembly or installation.**
- 6. Make sure the tree is stable after final assembly.**
- 7. Do not use candles on tree. Use only the included mini lights.**
- 8. Do not overload extension cords or power strips.**
- 9. Always fully insert electrical plugs into the receptacle.**
- 10. This product is for decoration use only. Not to be used by children as a toy. Keep out of reach of small children.**
- 11. Retain the instructions for future use and save the carton for storing tree.**

Please remove all packaging such as cardboard or plastic, before beginning.



Remove the tree stand. The metal stand opens into an "X" shape.

Place it on a flat surface.

Insert the pole with the tapered end of the lower part of the tree into the stand and tighten the three screws on the stand.



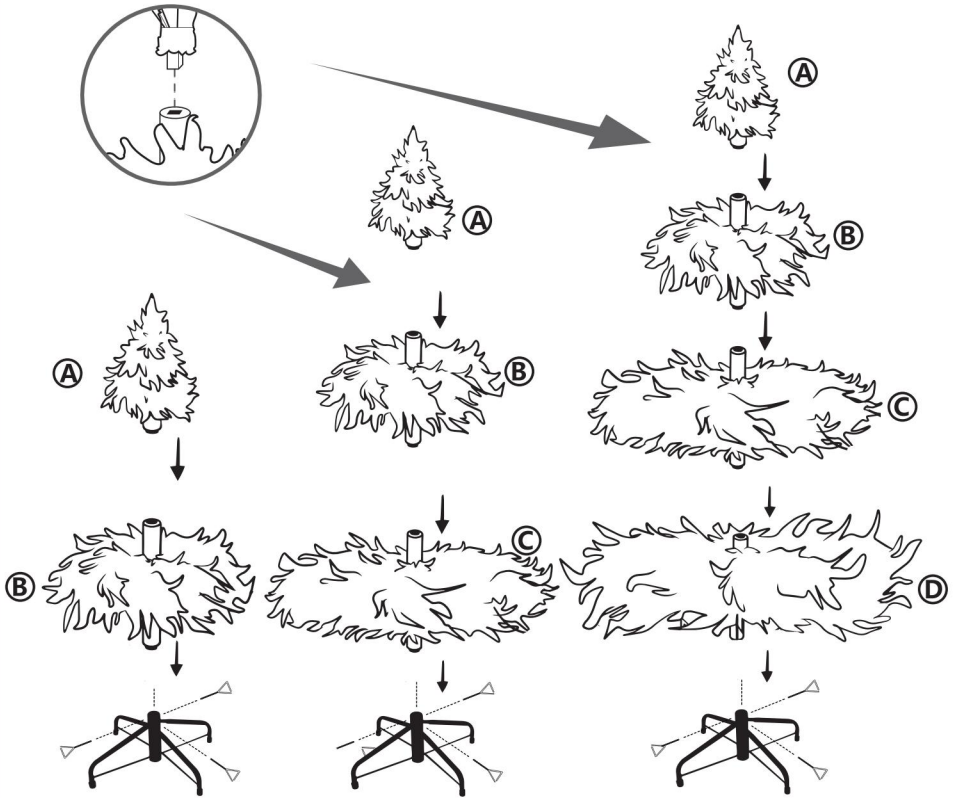
Gently lower all the main branches on each section of the tree.

Be careful not to apply excessive pressure to the brackets while straightening and separating all the branch tips.



Starting from the bottom, begin to gently bend and open the branches one by one.

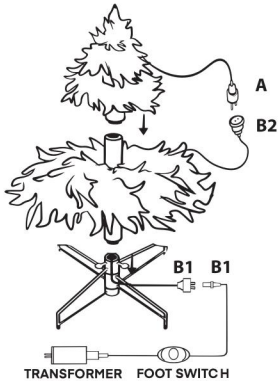
Assemble the middle section and top section in the right way



NOTE: The bottom section is wider than the middle section, make sure all sections are assembled in the right way.

ELECTRICAL CONNECTIONS

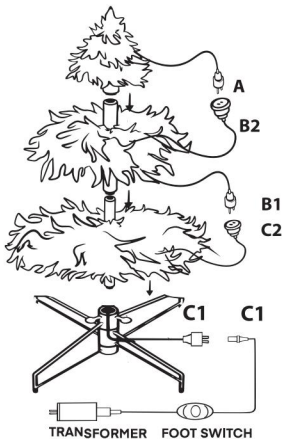
LED LIGHT (WARM WHITE & RGB COLOR)



FOR 4/4.5FT

1. Plug the connector to the one on the below. (**A** into **B2**)
2. Plug the final connector (**B1** into **B1**) to the terminal with the foot switch and transformer.

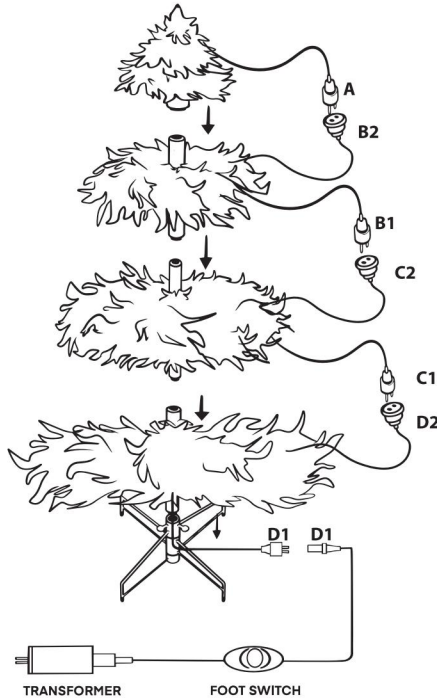
FOR 5FT



1. Plug the connector to the one on the below. (**A** into **B2**)
2. Plug the connector to the one on the below. (**B1** into **C2**)
3. Plug the final connector (**C1** into **C1**) to the terminal with the foot switch and transformer.

ELECTRICAL CONNECTIONS

LED LIGHT (WARM WHITE & RGB COLOR)

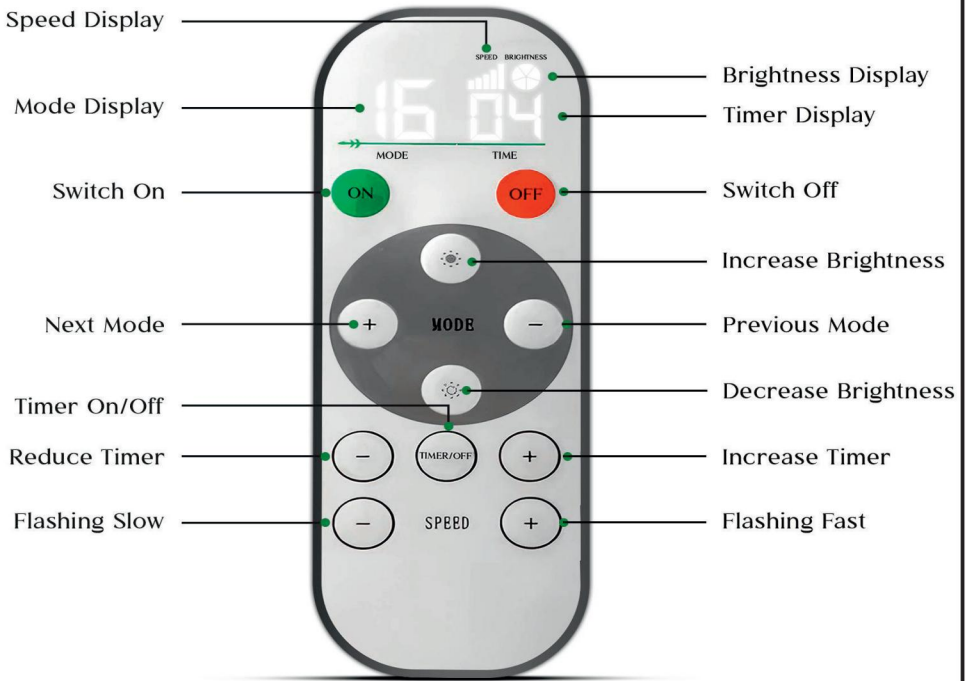


FOR 6/6.5/7/7.5/9/10FT

- 1.Plug the connector to the one on the below. (**A** into **B2**)
- 2.Plug the connector to the one on the below. (**B1** into **C2**)
- 3.Plug the connector to the one on the below. (**C1** into **D2**)
4. Plug the final connector (**D1** into **D1**)to the terminal with the foot switch and transformer.

REMOTE CONTROLLER

LED LIGHT (16 Modes)



Lighting Functions Description

16 Modes

1. steady warm white
2. steady multi
3. steady pastel
4. fading warm white to multi (slow)
5. fading warm white to multi (fast)
6. fading warm white
7. fading multi
8. fading pastel
9. fading warm white/multi/pastel cycle
10. flashing warm white
11. flashing multi
12. flashing pastel
13. flashing warm white to multi (slow)
14. flashing warm white to multi (fast)
15. flashing warm white/multi/pastel cycle
16. combination
17. off

There are 16 light functions available. You can choose the color by pressing the **foot switch** or **remote controller**.

TROUBLESHOOTING

The tree does not light when plugged in:

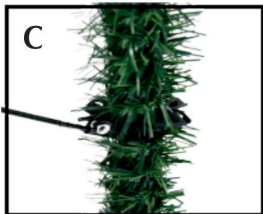
1. Check to make sure that all plus and adapters are properly connected. (The tree comes with a foot switch, try stepping on the on/off button)
2. Check if the light cord is loose or broken, and contact customer service to send replacement accessories as needed.

Christmas tree tilted:

1. Check whether the tree stand and eyebolts are connected properly. Make sure the bottom section of the tree stands straight in the tree stand by adjusting the eye screws.
2. Check whether the tree stand is deformed or broken, and contact customer service to send replacement accessories as needed.

Loose branches:

1. Extra Hinge Pins are included to repair the hinge of the branch. Place the branch into the slot in the bracket.
2. With the hook facing up, align the hook with the hole in the bracket and insert the new hinge pin into the hole, keeping the pin loose but not falling out, then securing the pin in place. (See Figure ABCD)



Disassembly and Storage Instructions:

To be carried out carefully and under adult supervision.

- 1.Warning - Disconnect power from the lights.**
- 2.Remove all decorations.**
- 3.Starting from the top, carefully remove each section. Gently press the branches back up against the pole.**
- 4.Place the branch sections back into the carton, putting the longest one on the bottom. Remove the screws from the stand and fold for easy storage. Tape the screws to the stand so they don't get misplaced.**
- 5.Store the product in a cool, dry location protected from sunlight, where the temperature does not exceed 104°F (40°C).**



KEEP DRY



ADULT SUPERVISION



KEEP AWAY FROM
HIGH TEMPERATURE



NO HEAVY WEIGHT
ON IT



May the beauty and joy of Christmas remain with you
throughout the new year



More Information or help please contact to us:
E-mail: joey@instreechristmas.com